

# Enhanced detection of single-cell-secreted proteins using a fluorescent immunoassay on the protein-G-terminated glass substrate

Yoon Jeong<sup>1,2</sup>  
Kwan Hong Lee<sup>1,2</sup>  
Hansoo Park<sup>3</sup>  
Jonghoon Choi<sup>1,2</sup>

<sup>1</sup>Department of Bionano Technology, Graduate School, Hanyang University, Seoul, <sup>2</sup>Department of Bionano Engineering, Hanyang University ERICA, Ansan, <sup>3</sup>School of Integrative Engineering, Chung-Ang University, Seoul, South Korea

**Abstract:** We present an evaluation of protein-G-terminated glass slides that may contain a suitable substrate for aligning the orientation of antibodies to obtain better binding moiety to the target antigen. The results of the protein-G-terminated slides were compared with those obtained with epoxy-based slides to evaluate signal enhancement for human immunoglobulin G (IgG) targets, and an increase in the average fluorescence intensity was observed for the lowest measurable amount of IgG target in the assay using protein-G-terminated slides. Applying this strategy for signal amplification to single-cell assays improves the limits of detection for human IgG protein and cytokines (interleukin-2 and interferon- $\gamma$ ) captured from hybridomas. Our data indicate that protein-G-terminated slides have a higher binding capacity for antigens and have better spot-to-spot consistency than that of traditional epoxy-based slides. These properties would be beneficial in the detection of fine amounts of single-cell-secreted proteins, which may provide key insights into cell-cell communication and immune responses.

**Keywords:** microwell array, antibody's orientation, single cell analysis, secreted cytokine, protein-G-terminated surface

## Introduction

The communication between cells, essential for the maintenance of homeostasis, is a back-and-forth interaction among different proteins.<sup>1,2</sup> Often, a breakdown in this intricate communication leads to a wide variety of diseases, thereby emphasizing the importance of protein-protein interactions. In particular, understanding the types and rates of proteins secreted by single cells is important for evaluating cell-to-cell communications. However, the limited protein detection range and the lack of detection sensitivity of current techniques are obstacles in the monitoring and study of secreted proteins from single cells.<sup>3,4</sup> One of the ways to circumvent such concerns is the use of protein microarrays that are commonly utilized for the high-throughput screening and analysis of protein interactions.<sup>5-7</sup> Protein microarrays rely on the capture of secreted proteins from cells on a support surface, for example, a nitrocellulose membrane, glass slide, or microtiter plate, and detection by the fluorescent dye-labeled probe molecules added to the array. Existing methods of detecting the capture of secreted proteins from single cells in microarrays are still impeded by their lack of detection sensitivity.

Traditional approaches to the capturing of cell-secreted proteins are based on the immunohistochemistry of the cells that rest on top of analyte-specific antibodies.<sup>8-10</sup> This method, however, typically requires long incubation times (12–24 hours) in order to capture sufficient amounts of analytes for detection. Assays isolating individual cells in microwells for the detection of single-cell-secreted analytes also require

Correspondence: Hansoo Park  
School of Integrative Engineering,  
Chung-Ang University, Seoul 156-756,  
South Korea  
Tel +82 2 820 5804  
Fax +82 2 813 8159  
Email heyshoo@cau.ac.kr

Jonghoon Choi  
Department of Bionano Engineering,  
Hanyang University ERICA,  
Ansan 426-791, South Korea  
Tel +82 31 400 5203  
Fax +82 31 436 8146  
Email jonghchoi@hanyang.ac.kr

this approach in order to probe the fluorescent signal from antibodies bound to the target proteins.<sup>11</sup>

A protein microarray utilizes microtechnology to probe interactions and functions of proteins in a high-throughput manner.<sup>12,13</sup> Since the technology can analyze many proteins simultaneously, it has been widely applied in current biotechnology. The protein microarray consists of any reaction between the probe and the immobilized protein that emits a fluorescent signal that can be read by a laser scanner. Other benefits of protein microarray systems include their automated processes, fast analysis, high sensitivity, and requirement of only small quantities of samples and reagents.<sup>14</sup> Protein microarrays were first introduced during the development of antibody microarrays in the 1980s.<sup>15</sup> Subsequently, fast, high-throughput analysis was readily developed in protein assays since they are based on DNA microarrays.<sup>16,17</sup>

The performance of microarray functionalized slides (eg, in terms of signal intensity, signal-to-noise ratio, and spot homogeneity) is dependent on various factors, one of which is the surface moiety for the efficient immobilization of either protein or antibody samples. To improve the detection sensitivity of microarrays, current microarray slides are conferred with a diverse set of surface functionalities by coating them with various units, including, but not limited to, functional groups such as aldehyde, epoxy, and amino groups, and nucleic acids such as DNA.<sup>18,19</sup> Antibodies are commonly conjugated onto such functionalized slides in an attempt to control and align their directionality. Yet, the non-specific nature of antibody conjugation on glass slides results in a reduction of the assay efficiency. The need to detect low levels of target analyte further compounds the issue.<sup>20,21</sup>

Such glass slides with functionalized surface groups (eg, amine, aldehyde, and *N*-hydroxysuccinimide [NHS] ester groups) bind proteins and antibodies either through the formation of covalent bonds or by their adsorption or electrostatic interactions.<sup>18</sup> The demand for a higher binding capacity for analytes and the need for decreased sample consumption while performing precise analyte quantification are leading to the application of these functionalized glass slides in single-cell microarrays.<sup>22,23</sup>

In this study, we evaluated the feasibility of protein-G-coated glass surfaces in terms of their antibody-binding capacity and resulting sensitivity by employing these surfaces to obtain single-cell secretory profiles of cytokines and by comparing these results with those obtained from experiments with epoxy-coated glass slides. We hypothesized that the use of protein-G-coated slides would be advantageous

because of their affinity for the fragment crystallizable (F<sub>c</sub>) portion of antibodies. By conferring the directionality of the antibodies to the functionalized slides, we expected that the sensitivity for target analytes secreted from single cells would subsequently be increased. Furthermore, the binding capacity was investigated using a microwell array of single cells, which would be of benefit to the functional analysis of cellular activity and regulation at the single-cell level.

## Experimental methods

### Reagents

Recombinant human immunoglobulin G1 (IgG1), interleukin-2 (IL-2), and interferon- $\gamma$  (IFN- $\gamma$ ) were all purchased from R&D Systems (Minneapolis, MN, USA). All human blood cell samples were obtained from Research Blood Components (RBC), LLC which follows the American Association of Blood Banks guidelines for drawing donors. RBC, LLC's regular population consists of healthy males and females between the ages of 18 and 65. All donors complete a uniform blood donor history questionnaire. An IRB approved consent form is obtained from each donor giving us permission to collect their blood and use or sell it at our discretion, for research purposes. Monoclonal antibodies were used for the capture and detection of human IgG, IL-2, and IFN- $\gamma$  (Mabtech, Nacka Strand, Sweden). For detection, antibodies for each of the aforementioned proteins were labeled by dye conjugation using NHS ester-activated fluorescent dyes (Alexa Fluor 532, Alexa Fluor 647; Invitrogen, Carlsbad, CA, USA) and purified by a desalting column (Pierce, Rockford, IL, USA). The average degree of dye labeling was determined to be four–five dye molecules per antibody. Commercial protein-G-coated and epoxy-terminated glass slides (SuperEpoxy and SuperEpoxy 2 Substrate Slides [Protein] and Protein A/G Substrate Slides) were obtained from Arrayit Ltd, Sunnyvale, CA, USA.

### Preparation of antibody-coated slides

Capture antibody was prepared at a concentration of 10  $\mu$ g/mL and was added to the epoxy or protein G slides. Upon incubation in a humidity chamber at 37°C for 1 hour, the slides were subsequently blocked with blocking buffer (3% skim milk in deionized water) on a bench-top shaker for 30 minutes. The slides were then washed with phosphate-buffered saline–Tween 20 (PBS-T; 0.05% Tween 20 in PBS; Sigma-Aldrich, St Louis, MO, USA) for 15 minutes, followed by washing twice with PBS for 5 minutes each time, and then washing with deionized water for 20–30 seconds. Finally, the slides were dried by

centrifugation in a microarray high-speed centrifuge (Arrayit Ltd) for 30 seconds. Various concentrations of IgG, IL-2, and IFN- $\gamma$  were spotted onto both the epoxy and protein G slides. The slides were incubated in a humidity chamber at 37°C for 1 hour. Any remaining IgG was aspirated, and the functionalized slides were washed and dried as with the capture antibodies. The detection antibody was prepared at the concentration of 1  $\mu\text{g}/\text{mL}$ , and the entire surface of epoxy slide and protein G slide were covered by using a slide cover. The slides were then incubated in a humidity chamber at 37°C for 1 hour, and then washed with PBS-T for 15 minutes, with PBS for 5 minutes, and with deionized water for 30 seconds. The arrays were imaged by using a GenePix 4000B microarray scanner (Molecular Devices LLC, Sunnyvale, CA, USA). The resulting fluorescence images were analyzed with GenePix ProMicroarray Image Analysis Software (Molecular Devices LLC).

## Preparation of cells

A hybridoma cell line (NI 4 426/1A6-10; obtained from Public Health England, London, UK) secreting human anti-IL-4 IgG was cultured in Dulbecco's Modified Eagle's Medium (Sigma-Aldrich) supplemented with 10% fetal bovine serum, 100 U/mL penicillin, and 100 mg/mL streptomycin.

Peripheral blood mononuclear cells (PBMCs) were obtained by Percoll (Sigma-Aldrich) isolation from heparinized whole blood (Research Blood Components, LLC, Boston, MA, USA). Frozen PBMCs were thawed and cultured in a HL-1 medium (Mediatech, Herndon, VA, USA) supplemented with 10% fetal bovine serum (PAA Laboratories, Cölbe, Germany), 100 U/mL penicillin, 100 mg/mL streptomycin, 10 mM 4-(2-hydroxyethyl)-1-piperazineethanesulfonic acid, 50 mM 2-mercaptoethanol, 1 mM sodium pyruvate, and 0.1 mM nonessential amino acids. In order to stimulate PBMCs, the cells were treated with a mixture of lipopolysaccharide (0.5  $\mu\text{g}/\text{mL}$ ), cytosine-phosphate-guanosine (CpG; 5  $\mu\text{g}/\text{mL}$ ), and tetanus toxoid (1.5  $\mu\text{g}/\text{mL}$ ) and were incubated at 37°C with 5% CO<sub>2</sub> for 24 hours.

## Preparation of microwell devices

The microwell arrays were prepared as previously described.<sup>24</sup> Briefly, microwells were fabricated by preparing a polydimethylsiloxane mixture (Dow Corning, Midland, MI, USA) into a custom-built silicon wafer mold and cured at 80°C for 2 hours. The sizes of microwells were fixed at 50  $\mu\text{m}$  in all dimensions. The microwell devices were sterilized in a plasma chamber (Femto Science, Suwon, South Korea) for 1 minute.

## On-chip cell imaging and single-cell protein array

After washing, the stimulated cells were incubated with 1 mM of calcein violet AM stain (Invitrogen) for 30 minutes to evaluate their viability. Next, a suspension of washed cells was loaded into the microwells and adjusted to obtain a cell density  $\sim 1$  cell/well, as described previously.<sup>24,25</sup> Images of the cells in the microwells were obtained by using an automated inverted epifluorescence microscope (Zeiss, Oberkochen, Germany) equipped for live-cell imaging (temperature and CO<sub>2</sub> control). Protein G and epoxy glass slides were coated with a mixture of three capture antibodies (10  $\mu\text{g}/\text{mL}$ ; human IgG1, IL-2, and IFN- $\gamma$ ). The functionalized slide was then used for microarray printing with cell-loaded arrays of microwells for 1 hour, as reported previously.<sup>24</sup> Following the printing processes, the functionalized slides were blocked with 3% skim milk in PBS and washed with PBS-T and then PBS.

## Detection of signal in the protein array

For the detection of secreted proteins and spotted recombinant IgG1, the slides were incubated with fluorescent dye-conjugated detection antibodies (1  $\mu\text{g}/\text{mL}$ ) for 1 hour at room temperature. Following incubation, the slides were briefly washed with PBS-T and PBS and then dried.

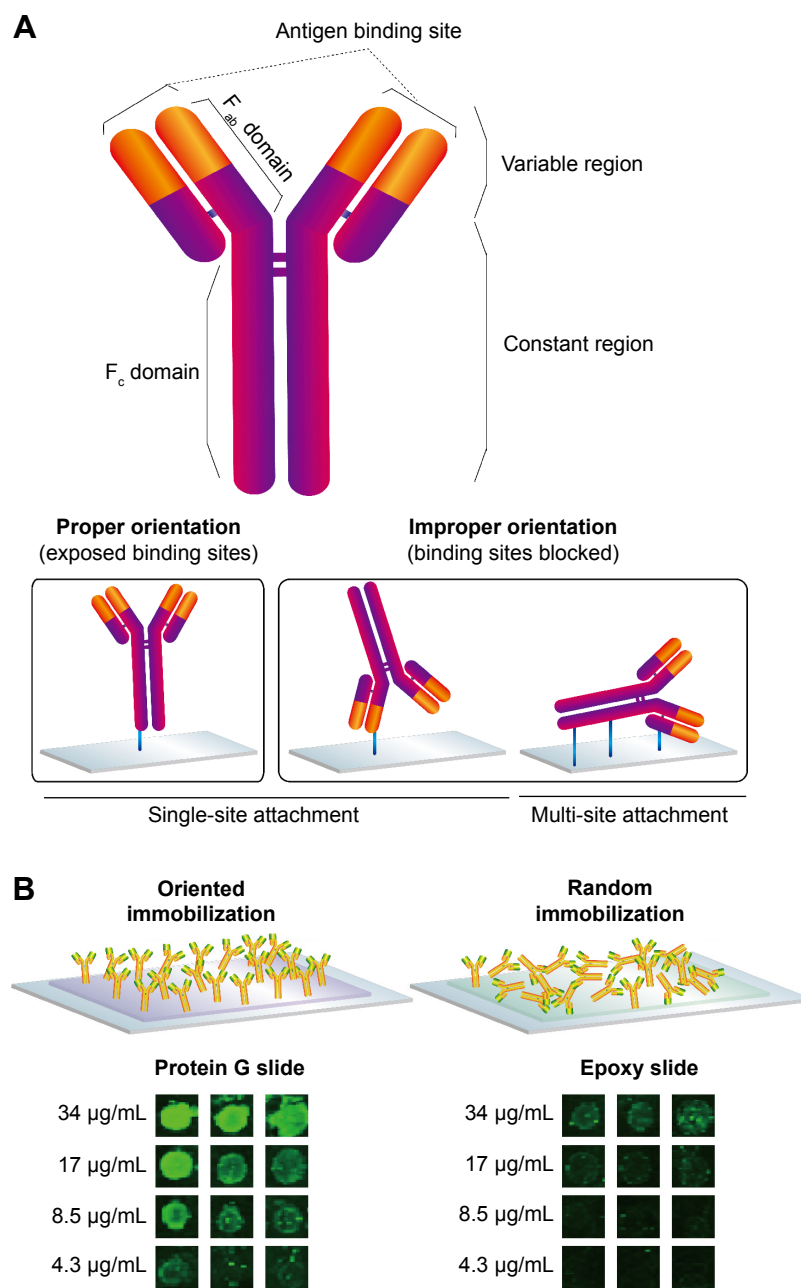
The arrays were imaged using a GenePix 4000B microarray scanner (Molecular Devices LLC). These data were filtered to remove features that contained saturated pixels (% Sat > 1) or that exhibited a high degree of covariance > 60.

## Statistical analysis

The limit of detection was calculated from the individual calibration curves as  $3 \times \sigma/s$  ( $\sigma$ , the standard deviation of the lowest concentration of target;  $s$ , the slope of the calibration curve in the linear range). Fisher's test and Student's  $t$ -tests were performed using GraphPad Prism (Version 5.0b for Mac OS X, GraphPad Software, San Diego, CA, USA).

## Results and discussion

Antibodies (Ig) are relatively large proteins ( $\sim 150$  kDa) consisting of two light and two heavy chains. The typical structure of an antibody consists of a roughly asymmetric Y-shape containing many molecules, one type of which are amino acids. While the amino acids in the F<sub>c</sub> region share the same sequence, the ones in the fragment antigen-binding (F<sub>ab</sub>) region have different sequences. This, therefore, allows the specific binding of antibodies to various antigens.<sup>26</sup> In Figure 1A, schemes of three possible orientations of



**Figure 1** Detection of human IgG protein in an immunochemistry assay on protein G or epoxy slides.

**Notes:** (A) Typical structure of an antibody and its oriented positions that can affect binding affinity are illustrated. (B) Scheme of the different types of immobilization of antibodies on protein G or epoxy slides. Representative images of the fluorescence intensity of human IgG bound to the capture antibodies immobilized on either protein-G- or epoxy-terminated glass slides with decreasing concentration of the antigen (34–4.3 µg/mL).

**Abbreviations:** IgG, immunoglobulin G; F<sub>ab</sub>, fragment antigen-binding; F<sub>c</sub>, fragment crystallizable.

antibody binding with a substrate are illustrated, excluding the possible steric hindrance. Single-site attachment or multiple-site attachment occurs when the affinity ligand of an antibody is attached to the substrates by one or more functional groups, respectively. The proper orientation for alignment of the antibodies can only be obtained in the case where the F<sub>c</sub> regions bind to a single ligand molecule on the surface. Therefore, any improperly orientated positions

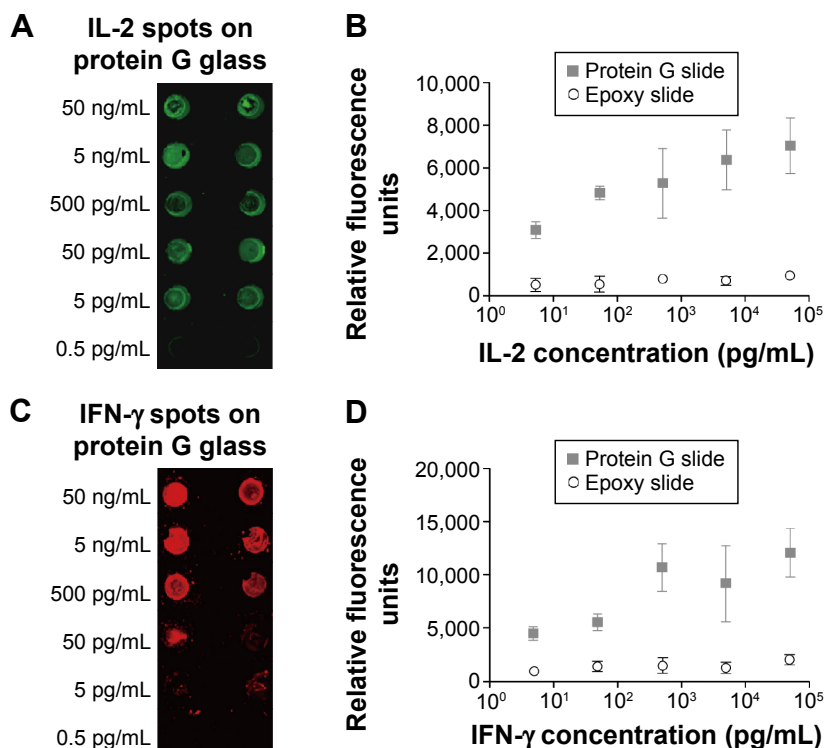
could block the F<sub>ab</sub> regions. For an effective binding moiety, two binding sites at two F<sub>ab</sub> regions should be exposed to the target analytes. As shown in Figure 1B, both types of slides were treated with human IgG antibodies (with decreasing concentrations from 34 to 4.3 µg/mL) and then compared in terms of their limits of detection. The protein G slides showed higher fluorescence intensities than those of the epoxy-coated slides and also displayed an extended detection limit. This

result indicates that protein-G-coated substrate could be used as a suitable surface for the preparation of antibodies and detection of analytes at low concentrations.

Antibodies mainly adsorb onto epoxy slides, but a few free amines present on an antibody can directly react with the epoxy groups on the substrate, resulting in secondary amine bonds.<sup>27,28</sup> Thus, the random immobilization of antibodies would occur on the epoxy-coated slides, and also, a small portion of antibodies may bind with the surface in the proper orientation for exposing the F<sub>ab</sub> regions. The random adsorption of antibodies on the epoxy-coated surface results from the reactions of random primary amino groups on the antibody, and thus would lead to less region-specific immobilization. The major disadvantage of this is not only that all of the antibody-binding sites would become occupied, but also that the maximal antibody-binding efficacy would not be reached.<sup>29</sup> In contrast, protein G would expose the binding sites of antibodies by the site-specific attachment of the affinity ligand to the antibodies' F<sub>c</sub> regions.<sup>29,30</sup> Antibodies can be directionally adsorbed onto protein G glass slide because a repeating 55-residue domain of protein G binds strongly to the F<sub>c</sub> region of IgG, which is the tail region of

an antibody.<sup>31</sup> Although the constant domains of F<sub>ab</sub> and F<sub>c</sub> are structurally related, protein G employs two different regions of its surface to bind to the F<sub>ab</sub> and F<sub>c</sub> regions of IgG, displaying approximately tenfold higher affinity for the F<sub>c</sub> region.<sup>31-33</sup> It is desirable to control antibody orientation on the substrates in immunoassays in order to utilize them as useful tools for the binding and detection of monoclonal and polyclonal antibodies via affinity interactions. To this end, protein G slides would have broader specificity than epoxy-based slides.

Recombinant human IL-2 or IFN- $\gamma$  was spotted on the epoxy and protein G slides coated with capture antibodies, and these cytokines were each detected using the respective antibodies labeled with fluorescent molecules (Figure 2). The results for the epoxy-slide spots are not shown in this figure due to negligible affinity and fluorescence signal observed for IL-2 and IFN- $\gamma$ . A quantitative evaluation and comparison of the spotting results is shown in Figure 2C and D, respectively. On the protein-G-terminated slides, it was possible to detect the target antigens in the low-concentration sample and also to obtain higher fluorescent signals than those obtained on the epoxy-coated slides. More F<sub>ab</sub> and F<sub>c</sub> regions were



**Figure 2** Detection of human cytokines on protein-G-coated glass slides.

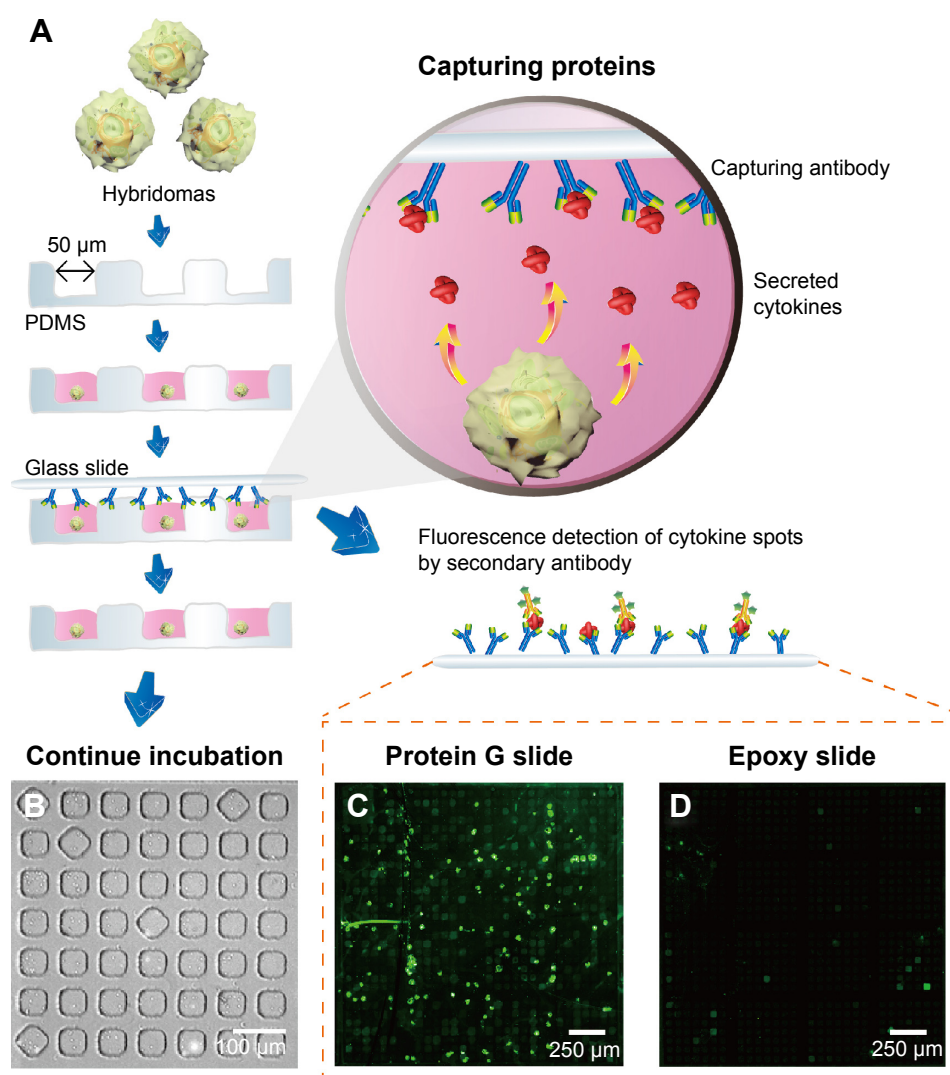
**Notes:** (A) Recombinant human IL-2 spots on protein G slides were detected using a sandwich immunoassay. Various concentrations of IL-2 (50 ng/mL, 5 ng/mL, 500 pg/mL, 50 pg/mL, 5 pg/mL, and 0.5 pg/mL) were spotted onto both epoxy and protein G slides and detected using the corresponding fluorescently labeled antibody. (B) Comparison of the IL-2 fluorescence intensities on epoxy or protein G slides. (C) Recombinant human IFN- $\gamma$  spots on protein G slides were detected by an immunoassay. (D) Comparison of the IFN- $\gamma$  fluorescence intensities on epoxy or protein G slide.

**Abbreviations:** IL-2, interleukin-2; IFN, interferon.

expected to bind onto the epoxy surfaces in a random fashion, and subsequently, decreased binding signal was observed. While it was expected that the protein-G-modified surfaces prepared with antibodies immobilized in an oriented manner would yield greater binding signal. Our results clearly show that the fluorescence intensities observed for the cytokines in the concentration range of ng/mL to pg/mL on the protein-G-modified slides were greater than those observed on the epoxy slides. These results indicate that using the protein G slides would provide the sensitivity needed to detect cytokine concentrations of less than 1 pg/mL, and that the antigen-binding sites ( $F_{ab}$  regions) on the surface of protein G slides were more accessible to the analytes, whereas many antigen-binding sites might have been blocked on the

epoxy-coated slides. Hence, site-oriented immobilization plays an important role in enhancing the detection signals for the protein-G-modified slides.

In order to confirm the increased sensitivity of the protein assay, we evaluated the protein-G-modified glass slide for the capturing of single-cell-secreted proteins using an array of microfabricated wells. Because the cells in microwells can be retained after printing to utilize their cytokine release, the system would be particularly useful for the monitoring of nonsacrificed, viable cell responses and also for the repeated capturing of cytokines from the same cells.<sup>25</sup> In Figure 3A, a cross-sectional schematic illustration of the microwell system is shown for the printing of cell-secreted proteins. After the suspension of cells was placed onto the array of microwells,



**Figure 3** The detection of IgG proteins secreted from hybridomas in microwells.

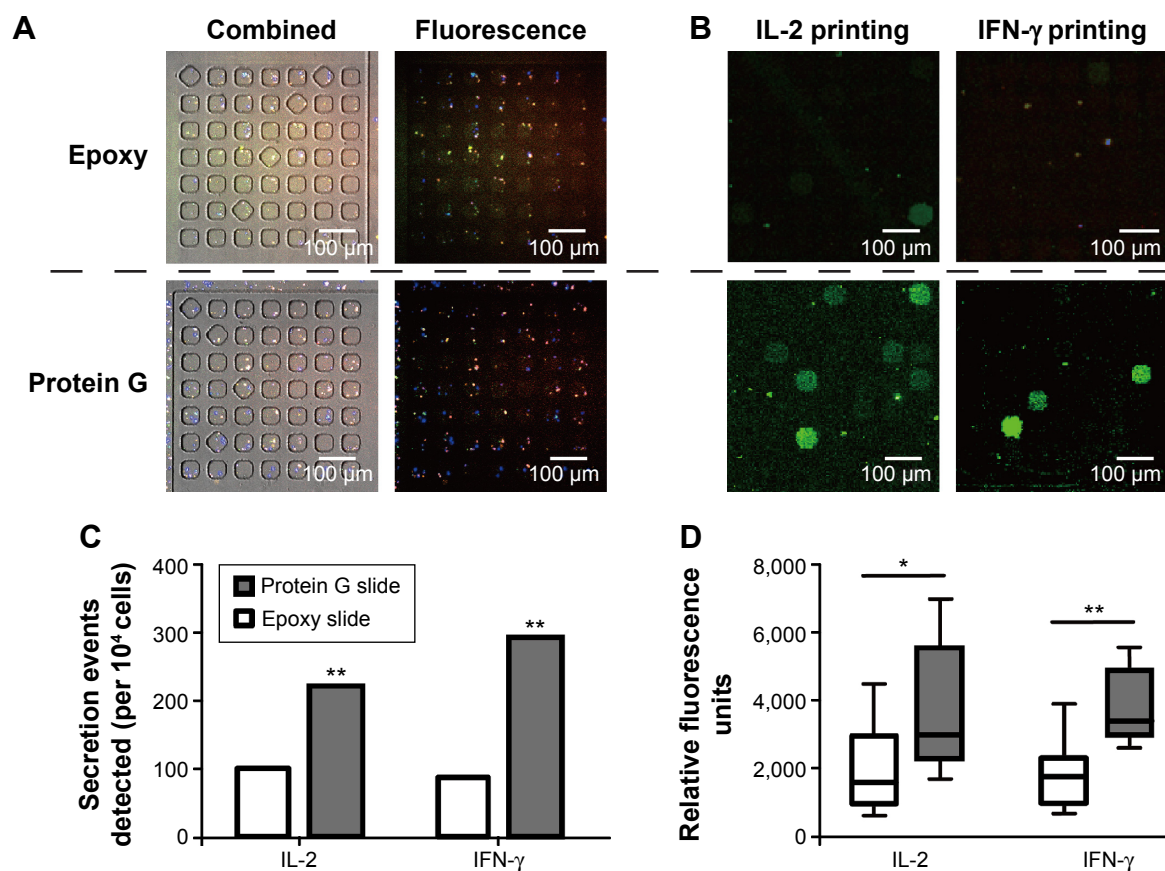
**Notes:** (A) Schematic diagram of the microwell array used to capture cytokines secreted from viable hybridomas deposited onto an array ( $\sim 20 \times 50 \text{ mm}^2$ ) consisting of  $72 \times 24$  blocks that contain a  $7 \times 7$  array of microwells. (B) Representative bright-field image of live hybridomas loaded into microwells at an average density of  $\sim 1\text{--}2$  cells/well. The array was sealed with glass slides bearing a mixture of capture antibodies. After the incubation period, the glass slide was recovered and the bound proteins were detected using secondary antibodies. Both the protein-G-terminated glass slides (C) and the epoxy-based slides (D) were coated with anti-human antibodies (IgG) for the respective cytokines. The immunofluorescence images of a region of a microarray show captured IgG from hybridomas on each substrate.

**Abbreviations:** IgG, immunoglobulin G; PDMS, polydimethylsiloxane.

the cells were settled down into the wells by gravity at an average density of 1–2 cells/well (Figure 3B). Next, the microwells were covered with two different types of glass slides that were precoated with specific IgG capture antibodies. After incubation (~1 hour), fluorescently labeled reagents were added to the glass slides for analyte detection. After the detachment of the glass slides, hybridomas were retained in the microwells for a continuous incubation period. We first hypothesized that the protein-G-terminated glass substrate could adsorb capture antibodies in the proper orientation. The comparative fluorescent microscope images (Figure 3C and D) for the IgG detection clearly showed that the protein-G-terminated glass slides had higher signal intensities than those on the epoxy-based slides. A greater detection range would be beneficial for capturing the small amounts of single cell-secreted proteins, and proper immobilization significantly improves the antibody–antigen binding ratio in a sandwich

immunoassay. Previous studies<sup>11,25</sup> used epoxy-based slides to capture the cytokines or immunoglobulins secreted from isolated individual cells, while our results show that, first, the application of protein-G-terminated substrates for the immobilization of antibodies in an immunoassay increases its sensitivity for the detection of cytokines from hybridomas. This is due to the correct orientation of antibodies that occurs on a surface coated with such substrates.

In addition, we studied the feasibility of obtaining high sensitivity in capturing primary cell-secreted cytokines using protein-G-terminated glass slides in a microwell assay. The protein-G-coated glass slides were functionalized with antibodies for human IL-2 and IFN- $\gamma$ , and were then sandwiched with a microwell assay isolating human PBMCs. The approach we describe in Figure 4 reveals that it was possible to obtain results for the repetitive detection of different cytokines released from the same subset of PBMCs in the



**Figure 4** Detection of secreted cytokines (IL-2 and IFN- $\gamma$ ) from stimulated PBMCs in a microwell assay using two types of substrates.

**Notes:** Microwells were placed in contact with each glass slide coated with IL-2 or IFN- $\gamma$  capture antibodies, respectively. After 1 hour, the glass slide was removed and incubated with secondary antibodies tagged with fluorescent molecules. **(A)** Combined fluorescence images of microwells, and **(B)** their printed glass slides on the same region capturing cell-secreted IL-2 or IFN- $\gamma$ . Two different cytokines released by PBMCs on each substrate were detected by dye-conjugated secondary antibodies. **(C)** Comparison of the numbers of positive events detected per 10,000 cells for two cytokines on the epoxy-based slide (white boxes) or on the protein-G-terminated slide (gray boxes). Statistical significance was determined by Fisher's exact test (\*\* $P < 0.01$ ). The data represent composite measurements from three separate microarrays generated in parallel using divided aliquots from the same pool of stimulated PBMCs. **(D)** Box and whisker plot comparing relative fluorescence units detected on the epoxy-based slide (white boxes) and on the protein-G-terminated slide (gray boxes) for two different proteins secreted from PBMCs. Statistical significances were determined by the Student's *t*-test (\* $P < 0.05$ , \*\* $P < 0.01$ ).

**Abbreviations:** IL-2, interleukin-2; IFN- $\gamma$ , interferon- $\gamma$ ; PBMCs, peripheral blood mononuclear cells.

microwells. The combined fluorescence images (Figure 4A) show that the live PBMCs visualized in the microwells had different surface cluster-of-differentiation markers for immune cells. For the evaluation of the detection sensitivity, protein-G-terminated glass slides were compared with the epoxy-coated slides in terms of the number of positive spots and their fluorescence intensities, representing the capture of IL-2 and IFN- $\gamma$  (Figure 4B). Figure 4C correlates the number of positive spots for each cytokine with the data collected from each microwell by image analysis. The number of secretion events detected in the protein G slides was two- to threefold higher than that in the epoxy slides. As shown in Figure 4D, the relative fluorescence intensity was also statistically significantly higher in the protein G slides than that in the epoxy slides for both IL-2 and IFN- $\gamma$  detection.

These results confirm that increased detection sensitivity for cell-secreted cytokines can be obtained by minimizing the nonspecific antibody binding on the substrate and by increasing the possibility of correct orientations of the capture antibodies on the surface of protein-G-terminated glass.

Therefore, it would be important in a protein assay, particularly for single-cell analysis, to ensure that the affinity ligands are immobilized on the substrate and that the binding regions of the antibodies are exposed and free to interact with the target molecules. As we show in this study by the use of comparative results, the type of surface used in an assay can play an important role in the efficacy, number of detection events, and fluorescent signal intensity of protein assays.

## Conclusion

Herein, we demonstrated the increased detection capacity of protein assays when employing protein-G-modified substrates for the preparation of capture antibodies. When the geometry of the antibodies is taken into account, it can be inferred that they were directionally conjugated onto the protein G slide, because only the F<sub>c</sub> portion of the antibody can be conjugated on the substrate. We show that this approach allowed increased detection events and fluorescence intensity for the capture of proteins or cytokines both from hybridomas and human PBMCs in the microarrays. The protein G on the slides may serve as an effective substrate for capturing minute amounts of single-cell-secreted cytokines, which are important markers in the study of cell-cell signaling between immune cells.

## Acknowledgment

This work was supported by the research fund of Hanyang University (HY-2014-2082).

## Disclosure

The authors report no conflicts of interest in this work.

## References

- Di Carlo D, Lee LP. Dynamic single-cell analysis for quantitative biology. *Anal Chem*. 2006;78(23):7918–7925.
- Jeong Y, Choi J, Lee KH. Technology advancement for integrative stem cell analyses. *Tissue Eng Part B Rev*. 2014;20(6):669–682.
- Han Q, Bradshaw EM, Nilsson B, et al. Multidimensional analysis of the frequencies and rates of cytokine secretion from single cells by quantitative microengraving. *Lab Chip*. 2010;10(11):1391–1400.
- Raphael MP, Christodoulides JA, Delehanty JB, et al. Quantitative imaging of protein secretions from single cells in real time. *Biophys J*. 2013;105(3):602–608.
- MacBeath G, Schreiber SL. Printing proteins as microarrays for high-throughput function determination. *Science*. 2000;289(5485):1760–1763.
- Wacker R, Schroder H, Niemeyer CM. Performance of antibody microarrays fabricated by either DNA-directed immobilization, direct spotting, or streptavidin-biotin attachment: a comparative study. *Anal Biochem*. 2004;330(2):281–287.
- Sun H, Tan LP, Gao L, Yao SQ. High-throughput screening of catalytically inactive mutants of protein tyrosine phosphatases (PTPs) in a phosphopeptide microarray. *Chem Commun (Camb)*. 2009;(6):677–679.
- Hsu SM, Raine L, Fanger HA. Comparative study of the peroxidase-antiperoxidase method and an avidin-biotin complex method for studying polypeptide hormones with radioimmunoassay antibodies. *Am J Clin Pathol*. 1981;75(5):734–738.
- Hsu SM, Soban E. Color modification of diaminobenzidine (DAB) precipitation by metallic ions and its application for double immunohistochemistry. *J Histochem Cytochem*. 1982;30(10):1079–1082.
- de Matos LL, Trufelli DC, de Matos MG, et al. Immunohistochemistry as an important tool in biomarkers detection and clinical practice. *Biomark Insights*. 2010;5:9–20.
- Choi J, Hwang MP, Lee JW, Lee KH. A glimpse into the interactions of cells in a microenvironment: the modulation of T cells by mesenchymal stem cells. *Int J Nanomedicine*. 2014;9:127–139.
- Magnan CN, Zeller M, Kayala MA, et al. High-throughput prediction of protein antigenicity using protein microarray data. *Bioinformatics*. 2010;26(23):2936–2943.
- Hospach I, Joseph Y, Mai M, et al. Fabrication of homogeneous high-density antibody microarrays for cytokine detection. *Microarrays*. 2014;3(4):282–301.
- Waentig L, Techritz S, Jakubowski N, et al. A multi-parametric microarray for protein profiling: simultaneous analysis of 8 different cytochromes via differentially element tagged antibodies and laser ablation ICP-MS. *Analyst*. 2013;138(21):6309–6315.
- Chang TW. Binding of cells to matrixes of distinct antibodies coated on solid surface. *J Immunol Methods*. 1983;65(1–2):217–223.
- Schena M, Shalon D, Davis RW, et al. Quantitative monitoring of gene expression patterns with a complementary DNA microarray. *Science*. 1995;270(5235):467–470.
- Schaferling M, Nagl S. Optical technologies for the read out and quality control of DNA and protein microarrays. *Anal Bioanal Chem*. 2006;385(3):500–517.
- Kusnezow W, Jacob A, Walijew A, et al. Antibody microarrays: an evaluation of production parameters. *Proteomics*. 2003;3(3):254–264.
- Seurynck-Servoss SL, White AM, Baird CL, et al. Evaluation of surface chemistries for antibody microarrays. *Anal Biochem*. 2007;371(1):105–115.
- Kausaite-Minkstimiene A, Ramanaviciene A, Kirlyte J, et al. Comparative study of random and oriented antibody immobilization techniques on the binding capacity of immunosensor. *Anal Chem*. 2010;82(15):6401–6408.



21. Song HY, Zhou X, Hogley J, et al. Comparative study of random and oriented antibody immobilization as measured by dual polarization interferometry and surface plasmon resonance spectroscopy. *Langmuir*. 2012;28(1):997–1004.
22. Trilling AK, Beekwilder J, Zuilhof H. Antibody orientation on biosensor surfaces: a minireview. *Analyst*. 2013;138(6):1619–1627.
23. Makaraviciute A, Ramanaviciene A. Site-directed antibody immobilization techniques for immunosensors. *Biosens Bioelectron*. 2013;50:460–471.
24. Ogunniyi AO, Story CM, Papa E, et al. Screening individual hybridomas by microengraving to discover monoclonal antibodies. *Nat Protoc*. 2009;4(5):767–782.
25. Love JC, Ronan JL, Grotenbreg GM, et al. A microengraving method for rapid selection of single cells producing antigen-specific antibodies. *Nat Biotechnol*. 2006;24(6):703–707.
26. Wang W, Singh S, Zeng DL, et al. Antibody structure, instability, and formulation. *J Pharm Sci*. 2007;96(1):1–26.
27. Leckband D, Langer R. An approach for the stable immobilization of proteins. *Biotechnol Bioeng*. 1991;37(3):227–237.
28. Mateo C, Torres R, Fernandez-Lorente G, et al. Epoxy-amino groups: a new tool for improved immobilization of proteins by the epoxy method. *Biomacromolecules*. 2003;4(3):772–777.
29. Beyer NH, Hansen MZ, Schou C, et al. Optimization of antibody immobilization for on-line or off-line immunoaffinity chromatography. *J Sep Sci*. 2009;32(10):1592–1604.
30. Akerstrom B, Brodin T, Reis K, et al. Protein G: a powerful tool for binding and detection of monoclonal and polyclonal antibodies. *J Immunol*. 1985;135(4):2589–2592.
31. Gronenborn AM, Filpula DR, Essig NZ, et al. A novel, highly stable fold of the immunoglobulin binding domain of streptococcal protein G. *Science*. 1991;253(5020):657–661.
32. Kato K, Lian LY, Barsukov IL, et al. Model for the complex between protein G and an antibody Fc fragment in solution. *Structure*. 1995;3(1):79–85.
33. Sinha S, Zhang L, Duan S, et al. Effect of protein structure on deamidation rate in the Fc fragment of an IgG1 monoclonal antibody. *Protein Sci*. 2009;18(8):1573–1584.

## International Journal of Nanomedicine

### Publish your work in this journal

The International Journal of Nanomedicine is an international, peer-reviewed journal focusing on the application of nanotechnology in diagnostics, therapeutics, and drug delivery systems throughout the biomedical field. This journal is indexed on PubMed Central, MedLine, CAS, SciSearch®, Current Contents®/Clinical Medicine,

Submit your manuscript here: <http://www.dovepress.com/international-journal-of-nanomedicine-journal>

Dovepress

Journal Citation Reports/Science Edition, EMBase, Scopus and the Elsevier Bibliographic databases. The manuscript management system is completely online and includes a very quick and fair peer-review system, which is all easy to use. Visit <http://www.dovepress.com/testimonials.php> to read real quotes from published authors.