

Anoctamin and transmembrane channel-like proteins are evolutionarily related

YOONSOO HAHN¹, DONG SEON KIM¹, IRA H. PASTAN² and BYUNGKOOK LEE²

¹Department of Life Science, Chung-Ang University, Seoul 156-756, Korea; ²Laboratory of Molecular Biology, National Cancer Institute, National Institutes of Health, Bethesda, MD 20892, USA

Received February 3, 2009; Accepted April 10, 2009

DOI: 10.3892/ijmm_00000205

Abstract. The anoctamin (ANO) family of proteins, consisting of 10 members in mammals, are transmembrane proteins that have Ca²⁺-activated Cl⁻ channel activity. The transmembrane channel-like (TMC) family of proteins, consisting of 8 members in mammals, are also transmembrane proteins of which mutations are implicated in various human conditions, such as hearing loss and epidermodysplasia verruciformis. Here we show that ANO and TMC proteins share high sequence similarity and probably the same membrane topology, indicating that these proteins are evolutionarily related. We found many conserved amino acid residues between the two families of proteins, especially in regions spanning the transmembrane domains TM1, TM4-TM5, and TM6-TM7. These findings imply that these proteins form one large family, which we term ANO/TMC superfamily and that TMC proteins also function as channels for Cl⁻ or other ions. The ANO/TMC superfamily proteins are present in almost all diverse groups of eukaryotic organisms, suggesting that the proteins function in important biological processes, such as ion homeostasis, in eukaryotic cells.

Introduction

The anoctamin (ANO, also known as TMEM16) family of membrane proteins consists of 10 members (ANO1-10) in mammals and are implicated in various cancers and diseases (1). ANO1 (also known as TMEM16A or DOG1) has a Ca²⁺-activated Cl⁻ channel activity (2-4), suggesting that other members of this family are Cl⁻ channels (1). ANO1 is highly upregulated in gastrointestinal stromal tumors (5,6) and is amplified in oral (7) and head and neck squamous cell carcinomas (8). Disruption of mouse Anol caused abnormal

development of the trachea, indicating that the gene is a regulator of epithelial and smooth muscle cell organization in murine development (9). ANO5 (also known as GDD1 or TMEM16E) mutations in humans cause gnathodiaphyseal dysplasia (GDD), a rare skeletal syndrome characterized by bone fragility, sclerosis of tubular bones, and cemento-osseous lesions of the jawbone (10). ANO7 (also known as TMEM16G or NGEF) is selectively expressed in normal and cancerous prostates and mediates cell-cell aggregation (11,12). Axs, an ANO homolog in fruit fly (*Drosophila melaogaster*), is a membrane protein that colocalizes with components of the endoplasmic reticulum (ER) and is present within a structure ensheathing the meiotic spindle (13). Ist2p, a plasma membrane protein of Baker's yeast (*Saccharomyces cerevisiae*), homologous to animal ANO, plays a role in salt balance and transport (14). An extensive analysis of the topology of human ANO7 showed that ANO proteins consist of 8 transmembrane domains with both the N- and C-termini intracellular and with a re-entrant loop between TM5 and 6 (15).

The transmembrane channel-like (TMC) family of proteins contains 8 members (TMC1-8) of which mutations are associated with many human disorders (16,17). Although the gene name implies that these proteins are ion channels, there is no direct evidence for their channel activities and their molecular function remains unknown. TMC1 protein is present in cochlear hair cells and its mutations are associated with hearing loss (18,19). TMC6 (also known as EVER1) and TMC8 (also known as EVER2) are involved in epidermodysplasia verruciformis (EV) which is a genodermatosis associated with a high risk of skin cancers that results from a selective susceptibility to specific human papillomaviruses (HPVs) (20). TMC6 and 8 were proposed to regulate Zn²⁺ balance (21,22). TMC proteins were proposed to have 8 transmembrane domains with both the N- and C-termini intracellular and a re-entrant loop (16).

In this report, we show that ANO and TMC families of proteins share sequence similarities and probably the same membrane topology, suggesting that they are evolutionarily related, possibly having diverged during eukaryotic evolution. We found highly conserved regions encompassing transmembrane domains TM1, TM4-TM5, and TM6-TM7. Some amino acid residues are identical in all members of the two families. The homology implies that TMC proteins also function as Cl⁻ or other ion channels.

Correspondence to: Dr Yoonsoo Hahn, Department of Life Science, Chung-Ang University, 47 Heukseok-ro, Dongjak-gu, Seoul 156-756, Korea

E-mail: hahnny@cau.ac.kr

Key words: anoctamin, transmembrane channel-like, ion channel, membrane topology

Materials and methods

Sequence analyses. Multiple sequence alignments of human ANO and TMC proteins were generated by using MUSCLE obtained from <http://www.drive5.com/muscle/> (23), ClustalX2 downloaded from <http://www.clustal.org/> (24), and T-Coffee available at <http://www.tcoffee.org/> (25). The consensus-based coloring of multiple alignments was performed using the CHROMA program downloaded from <http://www.llew.org.uk/chroma/> (26). The Sequence Logo representations (27) of alignments for the selected conserved regions were produced using the WebLogo server available at <http://weblogo.berkeley.edu/> (28). Transmembrane domain predictions were performed using the TMHMM 2.0 server at <http://www.cbs.dtu.dk/services/TMHMM/> (29).

Identification of ANO and TMC homologs. Conventional BLAST and PSI-BLAST at the National Center for Biotechnology Information (NCBI) (<http://www.ncbi.nlm.nih.gov/BLAST/>) were used to search non-redundant protein sequence database for ANO or TMC protein homologs in proteomes of various organisms. The HMMER version 2.3.2 software package (<http://hmm.janelia.org/>) was used to build profile hidden Markov models (HMMs) (30) for the conserved regions and to search the non-redundant protein sequence database for similar sequence matches.

Results and discussion

ANO and TMC proteins have conserved sequences and form a superfamily. Previously, we identified a human membrane protein ANO7 (reported as NGEF) which was detected only in prostate cancer and normal prostate (11). We noted that TMC proteins (16) possessed the same number of transmembrane domains and a similar proposed membrane topology compared to ANO proteins although conventional BLAST or PSI-BLAST searches using ANO family members as queries failed to detect TMC proteins, and vice versa. To test whether ANO and TMC proteins are actually related, we performed comprehensive pairwise and multiple sequence comparisons of 10 ANO proteins and 8 TMC proteins from human. The proteins from the two families showed overall alignment over the entire length of the sequences. Especially, the regions encompassing transmembrane domains TM1, TM4-TM5, and TM6-TM7 exhibited high sequence similarities among the ANO and TMC family members (Fig. 1). The segments showing sequence similarities were extracted from 8 ANO and TMC proteins of each and were subjected to multiple alignment generation. ANO8 and 10 were excluded from the multiple alignment because they are the most divergent compared to other members. A position is considered conserved if a single identical amino acid residue occurs in 80% or more, that is, 13 or more sequences out of the 16 proteins examined.

The TM1 region is the most conserved segment and contains several identical residues (Fig. 1A). A highly conserved pattern, [IV]-x(3)-[FY]-G-x(5)-Y-F-x(2)-L, was inferred from the multiple alignment. The pattern is located in the intracellular juxtamembrane region and the intracellular end of TM1. All the human ANO and TMC proteins exhibit this pattern, suggesting that this segment plays a crucial role in the molecular function of both ANO and TMC proteins.

Table I. Proteins analyzed in this study.

Protein	Accession ^a	TM1 ^b	TM4-TM5 ^b	TM6-TM7 ^b
ANO1	NP_060513.4	309-363	536-608	699-788
ANO2	NP_065106.1	337-391	575-647	738-827
ANO3	NP_113606.2	373-427	593-665	751-840
ANO4	NP_849148.1	293-347	513-585	674-763
ANO5	NP_998764.1	281-335	512-584	669-758
ANO6	NP_001020527.1	276-330	506-578	663-752
ANO7	NP_001001891.2	324-378	543-615	704-793
ANO9	NP_001012302.2	168-222	376-448	537-626
TMC1	NP_619636.2	166-220	399-470	573-661
TMC2	NP_542789.2	230-284	462-533	632-720
TMC3	NP_001074001.1	119-173	352-423	557-645
TMC4	NP_653287.1	135-189	380-451	522-610
TMC5	NP_001098718.1	427-481	650-722	773-862
TMC6	NP_009198.3	226-280	465-537	589-678
TMC7	NP_079123.2	141-195	400-471	540-628
TMC8	NP_689681.2	87-141	330-401	471-559

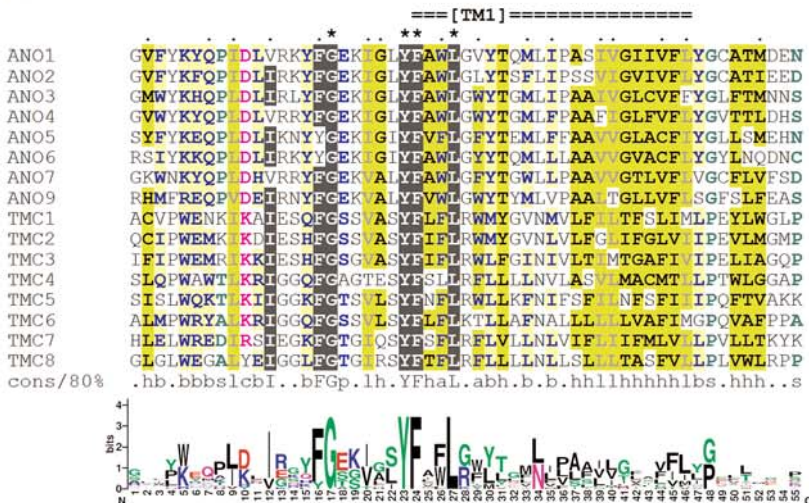
^aNCBI accession numbers and version numbers. ^bCoordinates of the conserved regions shown in Fig. 1.

The region around TM5 and 6 also shows sequence conservation among ANO and TMC proteins (Fig. 1B). The transmembrane segments TM5 and 6 are rich in hydrophobic residues and are linked by a 13- or 14-amino acid-long loop. In the middle of this cytoplasmic loop, all the ANO and TMC proteins have a conserved glutamic acid (E) residue.

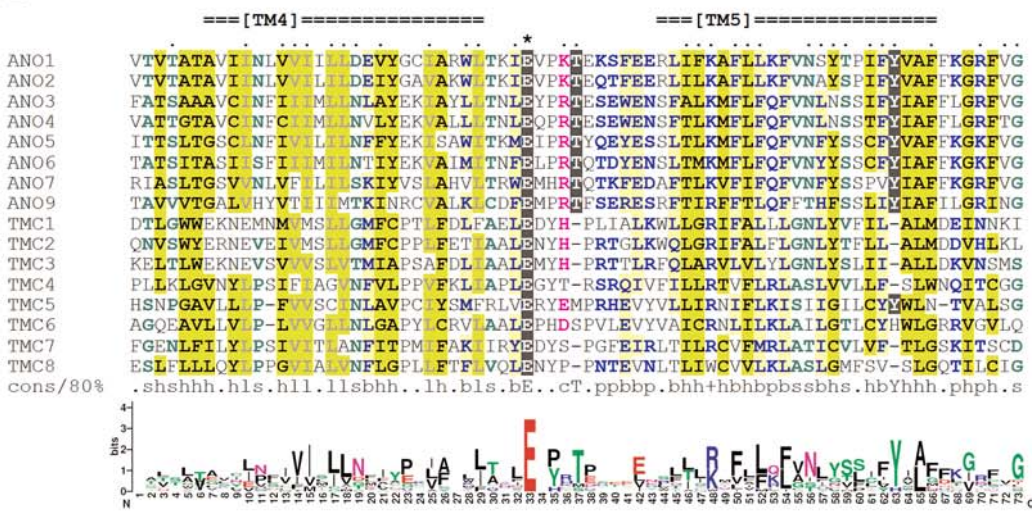
The third conserved segment is present around the TM6 and 7 (Fig. 1C). There are two distinctively conserved proline (P) residues spaced by two amino acids, that is, P-x(2)-P, in the middle of TM6. Most of ANO proteins (8 out of 10) have the sequence PLAP, whereas the majority of TMC proteins (5 out of 8) have PLLP at the corresponding region. Leucine (L) residue is present in the extracellular part of the juxtamembrane region of TM6 in 13 proteins. The TM7 is flanked by conserved alanine (A) residue at the cytoplasmic side and proline (P) residue at the extracellular side.

ANO and TMC proteins may share the same membrane topology. Transmembrane domain analyses predicted that ANO proteins have 9 hydrophobic helices (15). A conserved highly probable N-linked glycosylation site was found within the loop right before the last (9th) hydrophobic helix, indicating that the loop is outside and the C-terminus is inside. Because ANO proteins do not have signal peptides, it is highly likely that the N-terminus is also intracellular. Both the N- and C-termini being intracellular, we deduced that ANO proteins have an even number of transmembrane domains and either the 6th or the 7th helix is a re-entrant loop, a membrane-penetrating region that enters and exits the membrane on the same side (31). Based on this information, we extensively analyzed the topology of human ANO7 by inserting epitope tags into predicted intra- and extracellular loops (15). These studies confirm that it is the 6th hydrophobic helix that forms

A



B



C

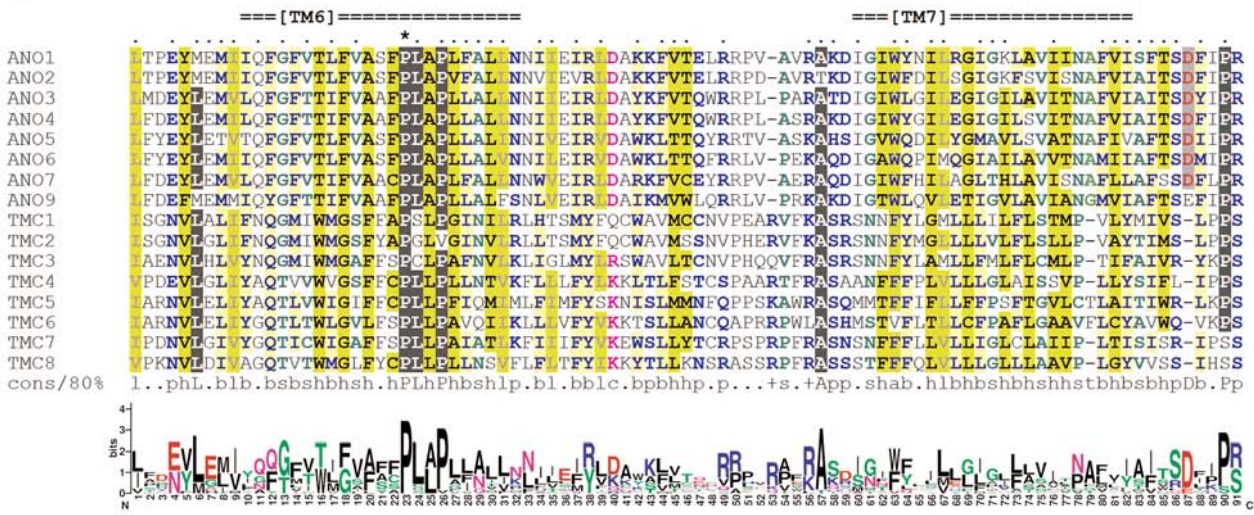


Figure 1. Conserved regions of ANO and TMC proteins. ANO and TMC proteins show sequence similarity in regions spanning TM1 (A), TM4-TM5 (B), and TM6-TM7 (C). The multiple alignments were generated from 8 ANO proteins and 8 TMC proteins by using MUSCLE and colored by using CHROMA (see Table I for database accession numbers and coordinates of the aligned regions). The transmembrane domain positions of human ANO1 predicted by TMHMM are indicated at the top. Asterisks (*) and dots (·) above the alignment mark identical and conserved residues, respectively. The Sequence Logo representation, generated using WebLogo, is presented beneath each alignment block. The 80% consensus ('cons/80%') abbreviations are, +, positive (HKR, blue lettering on a white background); a, aromatic (FHRY, blue on dark yellow); b, big (EFHILMQRWY, blue on light yellow); c, charged (DEHKR, pink on white); h, hydrophobic (ACFGHILMTVWY, black on dark yellow); l, aliphatic (ILV, grey on dark yellow); p, polar (CDEHKNQRST, light blue on white); and s, small (ACDGNPSTV, dark green on white).

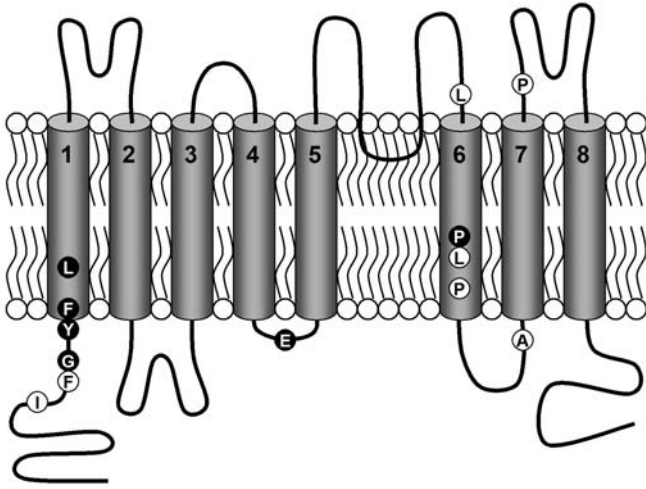


Figure 2. Proposed membrane topology of ANO and TMC proteins. A model of the membrane topology probably shared by both the ANO and TMC proteins is depicted. The 8 transmembrane domains are represented as barrels embedded in the membrane. A loop dipping into the membrane between TM5 and 6 is the re-entrant loop. Highly conserved residues identified in the multiple alignments in Fig. 1 are presented as balls, white lettering on a black background, identical in all the sequences; black on white, identical in 13 or more.

a re-entrant region between TM5 (the 5th helix) and TM6 (the 7th helix) and that human ANO7 has 8 transmembrane domains as predicted. It is highly likely that all of ANO proteins share this topology (2).

TMC proteins are also predicted to have 9 hydrophobic helices. The proposed membrane topology of TMC has 8 transmembrane domains and the 7th helix as a re-entrant loop (16). However, because ANO and TMC proteins have the same number of transmembrane domains and show high sequence similarity between most of the transmembrane domains, particularly TM6, we consider it probable that TMC proteins actually have the same membrane topology as ANO proteins.

A model of the membrane topology of the ANO/TMC superfamily of proteins is depicted in Fig. 2, in which the approximate locations of the conserved residues are marked. We expect that these conserved amino acids in and around the transmembrane domains play an important role in the molecular function of the ANO/TMC superfamily members.

TMC proteins may have ion channel activity. The ANO1 was recently identified as Ca^{2+} -activated Cl^- channels (2,3,9), suggesting that all the members of the ANO protein family have Cl^- channel activity (1). TMC proteins share the same membrane topology and show sequence conservations in and around the transmembrane domains with ANO proteins. Re-entrant loops are most commonly found in channel proteins forming the pore regions (31). There are some dominant negative mutations found in the ANO/TMC proteins, for example, human ANO5 (10), *Drosophila* Axs (13), human TMC1 (20), and mouse Tmc1 (19). Often, mutations in channel proteins exhibit dominant negative effects (32). Taken together, this evidence suggests that TMC proteins also have channel activity. TMC proteins could be Ca^{2+} -activated Cl^- channels as ANO proteins are. Recently, TMC6 and 8 proteins were proposed to be involved in Zn^{2+} balance (21,22).

Therefore, it is possible that TMC proteins directly participate in Zn^{2+} transport and hence are Zn^{2+} channels. Alternatively, TMC proteins could be Zn^{2+} -modulated Cl^- or other anion channels as ANO proteins are Cl^- -channels activated by Ca^{2+} .

ANO/TMC proteins are present in diverse eukaryotic organisms. Sequence similarity and shared membrane topology clearly show that human ANO and TMC proteins are evolutionarily related. We searched the proteomes of human and other organisms for proteins that are related to the human ANO/TMC superfamily. First, we built an HMM profile for each of the 3 regions shown in Fig. 1 using HMMER (30). Next, we searched the non-redundant protein data set downloaded from the NCBI database using the HMMs. All the human ANO and TMC family members and many non-human ANO and TMC homologs were successfully retrieved. However, there were no hits from outside of either the ANO or TMC families from human or other organisms, indicating that the ANO and TMC families are closest to each other.

When we performed conventional BLAST and PSI-BLAST searches of non-redundant protein database by using the representative human ANO and TMC proteins as queries, we successfully found ANO and TMC homologs in proteomes of various organisms. The ANO homologs are found in very diverse eukaryotic organisms which belong to 5 of 6 eukaryotic super-groups (33). The super-groups with ANO proteins include Amoebozoa (a slime mold, *Dictyostelium discoideum*), Archaeplastida (an angiosperm, *Arabidopsis thaliana*, and a moss, *Physcomitrella patens*), Chromalveolata (ciliates, *Paramecium tetraurelia* and *Tetrahymena thermophila*, and a diatom *Phaeodactylum tricorutum*), Excavata (a Euglenozoan hemoflagellate, *Leishmania infantum*), and Opisthokonta (animals and fungi). The wide range of ANO homolog distribution indicates that the ancestral ANO protein appeared very early in eukaryotic evolution, before the divergence of major eukaryotic super-groups.

The TMC homologs, however, are only found in animals and a choanoflagellate, *Monosiga brevicollis*, a unicellular eukaryote closest to animals. This suggests that the TMC protein family emerged and diverged from the ANO family by duplication during early choanoflagellate/animal evolution, although it is possible that TMC arose earlier but that some members diverged too far to be detected by BLAST searches.

In conclusion, we showed that ANO and TMC proteins belong to a larger superfamily that plays a role in ion homeostasis in diverse eukaryotic cells. Our findings are useful for the study of molecular functions of ANO proteins and, especially, TMC proteins.

Acknowledgements

This research was partially supported by the Intramural Research Program of the National Cancer Institute, National Institutes of Health and partially by the Chung-Ang University Excellent Researcher Grant in 2009.

References

- Hartzell HC, Yu K, Xiao Q, Chien LT and Qu Z: Anoctamin/TMEM16 family members are Ca^{2+} -activated Cl^- channels. *J Physiol* (In press).

2. Yang YD, Cho H, Koo JY, *et al*: TMEM16A confers receptor-activated calcium-dependent chloride conductance. *Nature* 455: 1210-1215, 2008.
3. Schroeder BC, Cheng T, Jan YN and Jan LY: Expression cloning of TMEM16A as a calcium-activated chloride channel subunit. *Cell* 134: 1019-1029, 2008.
4. Caputo A, Caci E, Ferrera L, *et al*: TMEM16A, a membrane protein associated with calcium-dependent chloride channel activity. *Science* 322: 590-594, 2008.
5. West RB, Corless CL, Chen X, *et al*: The novel marker, DOG1, is expressed ubiquitously in gastrointestinal stromal tumors irrespective of KIT or PDGFRA mutation status. *Am J Pathol* 165: 107-113, 2004.
6. Espinosa I, Lee CH, Kim MK, *et al*: A novel monoclonal antibody against DOG1 is a sensitive and specific marker for gastrointestinal stromal tumors. *Am J Surg Pathol* 32: 210-218, 2008.
7. Huang X, Godfrey TE, Gooding WE, McCarty KS Jr and Gollin SM: Comprehensive genome and transcriptome analysis of the 11q13 amplicon in human oral cancer and synteny to the 7F5 amplicon in murine oral carcinoma. *Genes Chromosomes Cancer* 45: 1058-1069, 2006.
8. Carles A, Millon R, Cromer A, *et al*: Head and neck squamous cell carcinoma transcriptome analysis by comprehensive validated differential display. *Oncogene* 25: 1821-1831, 2006.
9. Rock JR, Futtner CR and Harfe BD: The transmembrane protein TMEM16A is required for normal development of the murine trachea. *Dev Biol* 321: 141-149, 2008.
10. Tsutsumi S, Kamata N, Vokes TJ, *et al*: The novel gene encoding a putative transmembrane protein is mutated in gnathodiaphyseal dysplasia (GDD). *Am J Hum Genet* 74: 1255-1261, 2004.
11. Bera TK, Das S, Maeda H, *et al*: NGEF, a gene encoding a membrane protein detected only in prostate cancer and normal prostate. *Proc Natl Acad Sci USA* 101: 3059-3064, 2004.
12. Das S, Hahn Y, Nagata S, *et al*: NGEF, a prostate-specific plasma membrane protein that promotes the association of LNCaP cells. *Cancer Res* 67: 1594-1601, 2007.
13. Kramer J and Hawley RS: The spindle-associated transmembrane protein Axs identifies a membranous structure ensheathing the meiotic spindle. *Nat Cell Biol* 5: 261-263, 2003.
14. Kim Y, Chattopadhyay S, Locke S and Pearce DA: Interaction among Btn1p, Btn2p, and Ist2p reveals potential interplay among the vacuole, amino acid levels, and ion homeostasis in the yeast *Saccharomyces cerevisiae*. *Eukaryot Cell* 4: 281-288, 2005.
15. Das S, Hahn Y, Walker DA, *et al*: Topology of NGEF, a prostate-specific cell:cell junction protein widely expressed in many cancers of different grade level. *Cancer Res* 68: 6306-6312, 2008.
16. Keresztes G, Mutai H and Heller S: TMC and EVER genes belong to a larger novel family, the TMC gene family encoding transmembrane proteins. *BMC Genomics* 4: 24, 2003.
17. Kurima K, Yang Y, Sorber K and Griffith AJ: Characterization of the transmembrane channel-like (TMC) gene family: functional clues from hearing loss and epidermodysplasia verruciformis. *Genomics* 82: 300-308, 2003.
18. Kurima K, Peters LM, Yang Y, *et al*: Dominant and recessive deafness caused by mutations of a novel gene, TMC1, required for cochlear hair-cell function. *Nat Genet* 30: 277-284, 2002.
19. Vreugde S, Erven A, Kros CJ, *et al*: Beethoven, a mouse model for dominant, progressive hearing loss DFNA36. *Nat Genet* 30: 257-258, 2002.
20. Ramoz N, Rueda LA, Bouadjar B, Montoya LS, Orth G and Favre M: Mutations in two adjacent novel genes are associated with epidermodysplasia verruciformis. *Nat Genet* 32: 579-581, 2002.
21. Lazarczyk M and Favre M: Role of Zn²⁺ ions in host-virus interactions. *J Virol* 82: 11486-11494, 2008.
22. Lazarczyk M, Pons C, Mendoza JA, Cassonnet P, Jacob Y and Favre M: Regulation of cellular zinc balance as a potential mechanism of EVER-mediated protection against pathogenesis by cutaneous oncogenic human papillomaviruses. *J Exp Med* 205: 35-42, 2008.
23. Edgar RC: MUSCLE: a multiple sequence alignment method with reduced time and space complexity. *BMC Bioinformatics* 5: 113, 2004.
24. Larkin MA, Blackshields G, Brown NP, *et al*: Clustal W and Clustal X version 2.0. *Bioinformatics* 23: 2947-2948, 2007.
25. Notredame C, Higgins DG and Heringa J: T-Coffee: A novel method for fast and accurate multiple sequence alignment. *J Mol Biol* 302: 205-217, 2000.
26. Goodstadt L and Ponting CP: CHROMA: consensus-based colouring of multiple alignments for publication. *Bioinformatics* 17: 845-846, 2001.
27. Schneider TD and Stephens RM: Sequence Logos: a new way to display consensus sequences. *Nucleic Acids Res* 18: 6097-6100, 1990.
28. Crooks GE, Hon G, Chandonia JM and Brenner SE: WebLogo: a sequence logo generator. *Genome Res* 14: 1188-1190, 2004.
29. Krogh A, Larsson B, von Heijne G and Sonnhammer EL: Predicting transmembrane protein topology with a hidden Markov model: application to complete genomes. *J Mol Biol* 305: 567-580, 2001.
30. Eddy SR: Profile hidden Markov models. *Bioinformatics* 14: 755-763, 1998.
31. Viklund H, Granseth E and Elofsson A: Structural classification and prediction of reentrant regions in alpha-helical transmembrane proteins: application to complete genomes. *J Mol Biol* 361: 591-603, 2006.
32. Jentsch TJ, Friedrich T, Schriever A and Yamada H: The CLC chloride channel family. *Pflügers Arch* 437: 783-795, 1999.
33. Adl SM, Simpson AG, Farmer MA, *et al*: The new higher level classification of eukaryotes with emphasis on the taxonomy of protists. *J Eukaryot Microbiol* 52: 399-451, 2005.