

Determination of flavonoids from *Cirsium japonicum* var. *maackii* and their inhibitory activities against aldose reductase

Jaemin Lee¹ · Joyce P. Rodriguez¹ · Kang Hee Lee¹ ·
Jun Yeon Park² · Ki Sung Kang² · Dae-Hyun Hahm³ ·
Chang Ki Huh⁴ · Sang Cheon Lee⁵ · Sanghyun Lee¹

Received: 8 June 2017 / Accepted: 9 July 2017 / Published online: 18 July 2017
© The Korean Society for Applied Biological Chemistry 2017

Abstract The therapeutic activities of flavonoids from natural plant sources were investigated. The ethanol extracts from the aerial parts of *Cirsium japonicum* var. *maackii* (CJM) were tested for aldose reductase inhibition (ARI). Additionally, stepwise polarity fractions and flavonoids from CJM were evaluated for ARI. The ethyl acetate (EtOAc) fraction from CJM showed significant inhibitory effects. The compounds in the EtOAc fraction were identified as the flavonoids-cirsimaritin (1), hispidulin (2), and cirsimarin (3). Based on an ARI assay, the EtOAc fraction and hispidulin (2) exhibited good AR inhibitory activity (IC₅₀ values of 0.21 µg/mL and 0.77 µM, respectively). An HPLC quantitative analysis of different parts of CJM showed that the aerial part collected in the spring season (CJL1) contains the highest total flavonoid content. These results serve as a basis for maximizing the flavonoid yield and for the efficient usage of various parts of CJM. Our results also suggest that CJM could be a useful ARI

material for the treatment of various diabetic complications.

Keywords Aldose reductase · *Cirsium japonicum* var. *maackii* · Diabetic complications · Flavonoid · Hispidulin

Introduction

Diabetes mellitus is a metabolic disorder wherein patients fail to produce or respond to insulin which could result to hyperglycemia [1]. It is a chronic disease that affects approximately 382 million individuals in 2013 and expected to increase by over 590 million by 2035 [2]. This is a result of urbanization, changing lifestyle, lack of physical activities, and aging population [3]. Diabetes is known to be associated with complications due to chronic hyperglycemia. This includes retinopathy, nephropathy, sexual dysfunction, and cardiovascular disease [4]. These complications are influenced by the production of non-enzymatic glycation end products which are proteins and lipids glycated after exposure to aldose sugars [5]. However, the reduction in these aldose sugars also produces alcoholic sugars under the polyol pathway. Accumulation of polyol is also considered the leading cause of cataract formation in diabetic patients which is the leading cause of blindness [6].

Polyol pathway is a minor pathway in glucose metabolism activated by an increase in sugar levels. In this pathway, glucose is reduced to sorbitol by the action of aldose reductase (AR) using nicotinamide adenine dinucleotide phosphate (NADPH), cofactor. Sorbitol is metabolized, by sorbitol dehydrogenase, to fructose using NAD⁺, cofactor. The sorbitol pathway has been implicated in the

Jaemin Lee and Joyce P. Rodriguez contributed equally to this work.

✉ Sanghyun Lee
slee@cau.ac.kr

- ¹ Department of Integrative Plant Science, Chung-Ang University, Anseong 17546, Republic of Korea
- ² College of Korean Medicine, Gachon University, Seongnam 13120, Republic of Korea
- ³ Department of Physiology, College of Medicine, Kyung Hee University, Seoul 02447, Republic of Korea
- ⁴ Department of Food Science and Technology, Suncheon National University, Suncheon 57922, Republic of Korea
- ⁵ Imsil Cheese and Food Research Institute, Imsil 55918, Republic of Korea

Table 1 ^1H - and ^{13}C -NMR spectral data for compounds **1–3** ($\text{DMSO-}d_6$) from CJL1

No.	Cirsimaritin (1)		Hispidulin (2)		Cirsimaritin (3)	
	δ_{H}	δ_{C}	δ_{H}	δ_{C}	δ_{H}	δ_{C}
2	–	164.1	–	163.8	–	163.4
3	6.94 (s)	102.6	6.79 (s)	102.4	7.00 (s)	103.6
4	–	182.2	–	182.1	–	182.3
5	–	152.1	–	152.4	–	152.0
6	–	131.8	–	131.3	–	131.9
7	–	158.6	–	157.3	–	158.7
8	6.86 (s)	91.6	6.59 (s)	94.2	6.98 (s)	91.7
9	–	152.6	–	152.8	–	152.7
10	–	105.0	–	104.0	–	105.2
1'	–	120.9	–	121.2	–	123.8
2'	7.97 (dd, $J = 6.8, 1.5$)	128.5	7.92 (dd, $J = 6.5, 2.0$)	128.5	8.09 (dd, $J = 7.0, 2.0$)	128.2
3'	6.93 (dd, $J = 6.8, 1.5$)	116.0	6.92 (dd, $J = 6.5, 2.0$)	115.9	7.20 (dd, $J = 7.0, 2.0$)	116.6
4'	–	161.4	–	161.2	–	160.4
5'	6.93 (dd, $J = 6.8, 1.5$)	116.0	6.92 (dd, $J = 6.5, 2.0$)	115.9	7.20 (dd, $J = 7.0, 2.0$)	116.6
6'	7.97 (dd, $J = 6.8, 1.5$)	128.5	7.92 (dd, $J = 6.5, 2.0$)	128.5	8.09 (dd, $J = 7.0, 2.0$)	128.2
G-1	–	–	–	–	5.04 (d, $J = 7.5$)	99.8
G-2	–	–	–	–	–	73.2
G-3	–	–	–	–	–	76.5
G-4	–	–	–	–	–	69.6
G-5	–	–	–	–	–	77.2
G-6	–	–	–	–	–	60.6
6-OMe	3.93 (s)	60.0	3.75 (s)	59.9	3.93 (s)	60.0
7-OMe	3.73 (s)	56.4	–	–	3.74 (s)	56.5
5-OH	12.94 (s)	–	13.08 (s)	–	12.86 (s)	–

pathogenesis of sugar cataracts characterized by osmotic stress due to sorbitol accumulation [6]. Previous studies have suggested that it is related in cataract formation and the inhibition of AR could prevent the formation of cataracts [7]. Several studies have suggested the potential use of natural plant sources for the development of drugs to reduce diabetic complications, especially plants that contain high quantities of flavonoids and have strong in vivo AR inhibitory activity [8]. Various flavonoids including quercitrin, luteolin, kaempferol, quercetin, and afzelin exhibit AR inhibitory activity [9, 10].

Cirsium japonicum var. *maackii* (CJM) is a perennial herb distributed in many areas of China, Korea and Japan [11]. It is considered as traditional Chinese medicine and is used as an anti-hemorrhagic, anti-hypertensive, anti-hepatitis, and uretic agent. It has been prescribed as a possible treatment for cancer [12]. Phytochemical studies have identified various flavonoids in *C. japonicum*, i.e., apigenin, acacetin, diosmetin, pectolinarin, hispidulin-7-neohesperidoside, 5,7-dihydroxy-6,4'-dimethoxyflavone, linarin, and luteolin [8, 12–15]. Other compounds have also been isolated from the genus *Cirsium* including silybin [16]. Previous reports have shown that these flavonoids

have pharmacological importance. For example, linarin has anti-cancer activity, luteolin has anti-inflammatory effects, and pectolinarin has anti-diabetic activity [11, 17, 18].

In the present study, the AR inhibitory activity of CJM was assessed. The extract, different fractions, and flavonoids isolated from the aerial parts of CJM were subjected to an AR assay. A simultaneous determination of isolated flavonoids by HPLC–UV was conducted to evaluate the flavonoid content from various parts of CJM. The results of this study could serve as basis for maximizing the flavonoid content and for the efficient usage of various parts of CJM.

Materials and methods

Plant material

The aerial part of CJM (ICF-1) collected in the spring (CJL1) and fall (CJL2), seeds (CJS), roots (CJR) heat-treated through hot blast, and flowers (CJF) were obtained from Imsil Herbal Medicine, Republic of Korea.

Instruments, reagents, and chemicals

Isolated compounds were identified by mass spectrometry (MS) and nuclear magnetic resonance (NMR), using a JEOL JMS-600 W mass spectrometer (Tokyo, Japan) and a Bruker AVANCE 500 NMR spectrometer (Rheinstetten, Germany), respectively. Reagents and solvents, including nicotinamide adenine dinucleotide 2'-phosphate (β -NADPH), DL-glyceraldehyde, sodium phosphate buffer, potassium phosphate buffer, 3,3-tetramethylene glutaric acid (TMG), and dimethylsulfoxide (DMSO), were obtained from Sigma-Aldrich (St. Louis, MO, USA). HPLC analyses were performed using a Waters Breeze System with a 1525 Binary HPLC Pump and a 2489 System Ultraviolet–Visible Detector (Milford, MA, USA). Standard compounds (e.g., acacetin, apigenin, diosmetin, linarin, luteolin, pectolinarin, and silybin B) were acquired from Sigma-Aldrich.

Extraction, fractionation, and isolation

Dried CJL1 (5.71 kg) was extracted with EtOH for 3 h (7 L \times 3) at 65–75 °C under reflux. The solution was filtered, and the EtOH extract (667.2 g) was obtained after the solvent was removed *in vacuo*. The extract was supplemented with water and partitioned sequentially with *n*-hexane (213.6 g), CHCl₃ (39 g), EtOAc (67.6 g), and *n*-BuOH (47 g). The EtOAc fraction was divided into 19 fractions (Fr.1–Fr.19) by column chromatography on a silica gel (6 \times 80 cm, No. 7734) with step gradient elution by CHCl₃–MeOH (100:0 \rightarrow 0:100). Among the fractions, Fr. 3 (CJ2E27), Fr. 7 (CJ2E34), and Fr. 15 (CJ2E56) led to the isolation of compounds 1–3, respectively, with MeOH recrystallization.

Compound 1 Yellow powder; C₁₇H₁₄O₆; EI-MS *m/z*: 314 [M]⁺ (100), 299 (82.8), 285 (19.7), 271 (25.4), 254 (4.2), 239 (2.4), 227 (1.0), 200 (2.1), 195 (1.8), 181 (14.3), 167 (2.1), 153 (23.7), 135 (4.6), 128 (4.6), 119 (9.4), 93 (2.5), 69 (9.0); ¹H- and ¹³C-NMR (500 MHz, DMSO-*d*₆) (see Table 1).

Compound 2 Yellow powder; C₁₆H₁₂O₆; EI-MS *m/z*: 300 [M]⁺ (100), 285 (67.0), 271 (6.7), 257 (40.3), 242 (1.3), 228 (1.8), 181 (1.1), 167 (9.2), 153 (3.9), 139 (8.9), 129 (4.3), 119 (9.8), 91 (1.6), 69 (16.2); ¹H- and ¹³C-NMR (500 MHz, DMSO-*d*₆) (see Table 1).

Compound 3 Yellow powder; C₂₃H₂₄O₁₁; FAB-MS *m/z*: 477 [M+H]⁺; ¹H- and ¹³C-NMR (500 MHz, DMSO-*d*₆) (see Table 1).

Measurement of AR activity

Based on previous studies [10, 19], lenses from Sprague–Dawley rats were removed and were preserved in a freezer until the experimental assay. Each sample, including the EtOH extract, *n*-hexane, CHCl₃, EtOAc, *n*-BuOH fractions and compounds 1–3, was dissolved in DMSO for the AR assay.

Preparation of standards and samples for HPLC

Stock standard solutions were obtained by dissolving compounds 1–3 in MeOH to obtain a 1.0 mg/mL solution. Each compound was subjected to serial dilution to obtain various concentrations (1, 0.1, 0.01, 0.001, and 0.0001 mg/mL) for the calibration curve. The CJS, CJL1, CJL2, CJR, and CJF samples (each 25 g) were extracted with EtOH (each 1000 mL) under reflux and were evaporated. Each extract was melted with MeOH and filtered using a syringe filter (0.45- μ m).

Table 2 IC₅₀ of the EtOH extract and fractions from CJL1 on rat lens AR

Samples	Concentration (μ g/mL)	AR inhibition ^a (%)	IC ₅₀ ^b (μ g/mL)
EtOH ext.	10	49.40	–
<i>n</i> -Hexane fr.	10	12.65	–
CHCl ₃ fr.	10	68.98	1.16
	1	64.60	
	0.1	10.65	
EtOAc fr.	10	82.83	0.21
	1	65.96	
	0.1	42.17	
<i>n</i> -BuOH fr.	10	43.37	–
TMG ^c	10	83.28	0.28
	1	62.21	
	0.1	40.13	

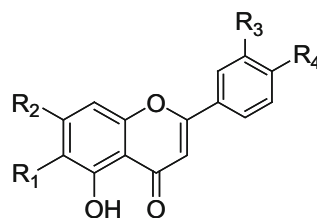
^a Inhibition rate was calculated as a percentage of the control value

^b IC₅₀ calculated from the least-squares regression line of the logarithmic concentrations plotted against the residual activity

^c TMG was used as a positive control

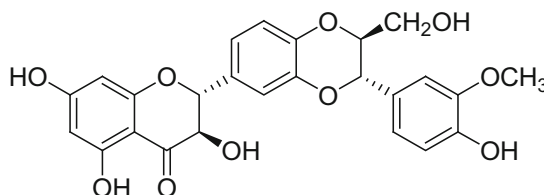
Fig. 1 Structures of flavonoids (A) and silybin B (B)

(A)



Compound	R ₁	R ₂	R ₃	R ₄
Cirsimaritin	OCH ₃	OCH ₃	H	OH
Hispidulin	OCH ₃	OH	H	OH
Cirsimarin	OCH ₃	OCH ₃	H	O-Glc
Linarin	H	O-Rut	H	OCH ₃
Pectolinarin	OCH ₃	O-Rut	H	OCH ₃
Luteolin	H	OH	OH	OH
Apigenin	H	OH	H	OH
Diosmetin	H	OH	OH	OCH ₃
Acacetin	H	OH	H	OCH ₃

(B)



HPLC conditions

The quantitative analysis of flavonoids (compounds 1–3, acacetin, apigenin, diosmetin, linarin, luteolin, and pectolinarin) was conducted using a reverse phase HPLC system. An INNO C18 column (25 cm × 4.6 mm, 5 μm) was used. The mobile phase was a gradient of water containing 0.5% acetic acid (solvent A) and acetonitrile (ACN, solvent B). Solvent A was decreased from 83 to 70% for 10 min, maintained for 15 min, decreased from 70 to 20% for 5 min, decreased from 20 to 0% for 5 min, and maintained for 5 min, and 0 to 83% for 10 min and maintained 5 min. The flow rate of mobile phase was 1 mL/min. The injection volume was 10 μL, and the detector was set at a UV absorbance of 270 nm. The column temperature was maintained at 30 °C. However, silybin B was recorded at UV 287 nm and a total of 50 min running time using a gradient elution. Solvent A was set at 70% and maintained for 10 min. It was decreased to 20% after 15 min and later to 0 after 5 min. It was maintained for

another 5 min before it was increased to 70% for 10 min. The elution was maintained for another 5 min.

Calibration curve

Compounds 1–3 were dissolved in MeOH, and stock solutions (0.1–1000 μg/mL) were prepared. The contents of compounds 1–3 in the samples were determined from the corresponding calibration curves. The calibration functions of compounds 1–3 were determined based on the peak area (Y), concentration (X , μg/mL), and mean values ($n = 5$) ± standard deviation.

Results

Identification of isolated compounds

The separation of EtOAc soluble fraction from CJL1 was conducted by repeated rounds of open column

Table 3 IC₅₀ of compounds 1–3 from CJL1 on rat lens AR

Compound	Concentration (μg/mL)	AR inhibition ^a (%)	IC ₅₀ ^b (μM)
Cirsimaritin (1)	10	84.19	2.83
	1	45.26	
	0.1	25.08	
Hispidulin (2)	10	89.35	0.77
	1	63.61	
	0.1	57.19	
	0.01	4.28	
Cirsimaritin (3)	10	63.97	3.35
	1	33.46	
	0.1	10.29	
TMG ^c	10	87.46	3.91
	1	58.64	
	0.1	32.54	

^a Inhibition rate was calculated as a percentage of the control value

^b IC₅₀ calculated from the least-squares regression line of the logarithmic concentrations plotted against the residual activity

^c TMG was used as a positive control

Table 4 Calibration curves for compounds 1–3

Compound	<i>t</i> _R	Calibration equation ^a	Correlation factor, <i>r</i> ^{2b}
Cirsimaritin (1)	32.21	$Y = 3000000X + 9045$	1
Hispidulin (2)	30.19	$Y = 4000000X + 7131.8$	1
Cirsimaritin (3)	17.41	$Y = 2000000X + 2219.7$	1

^a Y = peak area, X = concentration of standard (mg/mL)

^b r^2 = correlation coefficient for three data points in the calibration curve

chromatography using a silica gel and recrystallization, resulting in the isolation of compounds 1–3. The typical flavonoid signals of compounds 1–3 were detected in the ¹H-NMR spectra. The presence of singlet signals at δ 12.85–13.07 of compounds 1–3 showed 5-OH of an A-ring in the structure. The ¹H- and ¹³C-NMR data were compared with values from previous studies [20–23]. Consequently, compounds 1–3 were identified as cirsimaritin, hispidulin, and cirsimaritin, respectively, and isolated for the first time from CJL1 (Table 2). The chemical structure for each isolated compound is shown in Fig. 1.

AR inhibitory activity

The EtOH extract and fractions of CJL1 were tested for AR inhibition. The results are summarized in Table 2. The EtOAc fraction showed significant inhibition on the rat lens (IC₅₀ value 0.21 μg/mL). Both *n*-Hexane and *n*-BuOH fractions showed less than 50% inhibition therefore their IC₅₀ was not further determined. Compounds 1–3 were tested for rat lens AR inhibition (Table 3). Among them, compounds 1 and 2 (IC₅₀ values of 2.83 and 0.77 μM, respectively) exhibited greater inhibitory effects than those

of TMG (IC₅₀ value of 3.91 μM), used as a positive control, against AR.

Quantitative determination of compounds 1–3

HPLC separation of compounds 1–3 was conducted for quantitative analyses using a reverse phase system and elution with solvents A and B as mobile phases. The standard calibration curves for compounds 1–3 are shown in Table 4. The amounts of compounds 1–3 in various parts of CJM were simultaneously determined (Fig. 2) using the optimized analytical methods. The flavonoid content was higher in flowers and aerial parts than in roots, and seeds. In a previous study, the flavonoid content was higher in flowers and leaves than in roots [23]. For compounds 1–3, the content of cirsimaritin (1) was higher than those of hispidulin (2) and cirsimaritin (3). CJL1 contained the highest amount of cirsimaritin (1) (13.143 mg/g). The total flavonoid content of various parts was highest in CJL1 (22.58 mg/g) (Table 5). The presence of acacetin, apigenin, diosmetin, linarin, luteolin, pectolinarin, and silybin B on the EtOH extracts from the different parts of CJM was also determined. The chemical structures for all mentioned

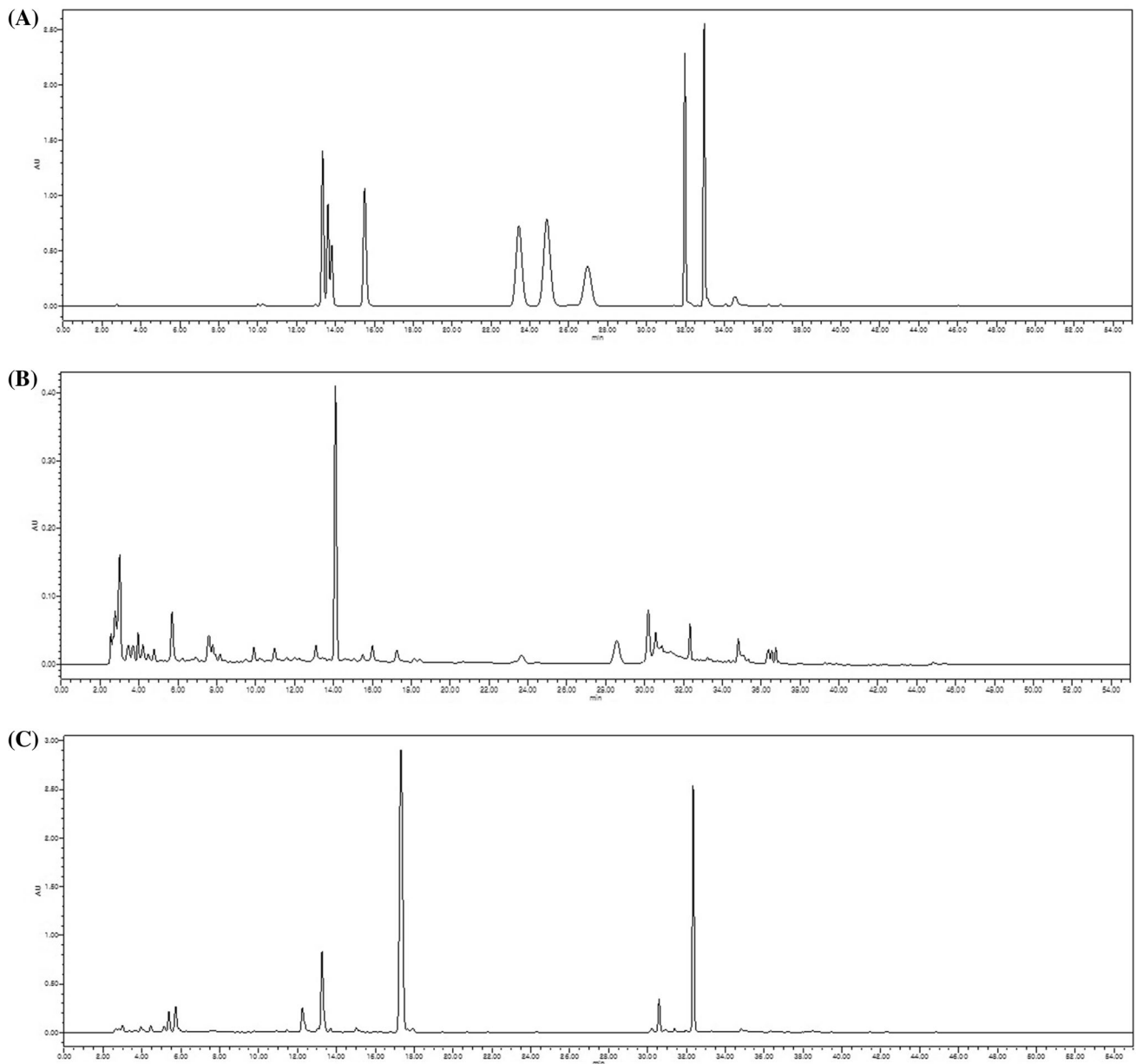


Fig. 2 HPLC chromatograms of flavonoids (A) and EtOH extracts of CJS (B), CJL1 (C), CJL2 (D), CJR (E), and CJF (F) (linarin: 14.68, pectolinarin: 15.02, luteolin: 15.27, cirsimarin: 17.41, apigenin:

26.95, diosmetin: 28.57, hispidulin: 30.19, cirsimaritin: 32.21, and acacetin: 33.12 min)

compounds are shown in Fig. 1. However, HPLC–UV results in Figs. 2 and 3 suggest that these compounds were not detected based on comparison with retention times and spike tests for individual compounds.

Discussion

The accumulation of polyol in the lens membrane could result to osmotic stress. Previously, it has been suggested that AR is directly involved in this pathological condition [7]. Extracts and isolated compounds from natural plant

source have being widely considered as an alternative to synthetic drugs [8, 24]. Jung et al. [8] evaluated the MeOH extract and fractions of different parts of *C. maackii* to determine AR inhibitory and anti-oxidant activity and found that leaves have 0.54 $\mu\text{g/mL}$ AR inhibitory activity (IC_{50}). They concluded that the polar fractions, including EtOAc and BuOH, have greater anti-oxidant potential than that of the other fractions. This suggests that the aerial parts of CJM and its polar fractions are functionally important and accordingly should be examined in further studies. Previous studies have indicated that various parts of *Cirsium* extracts show good

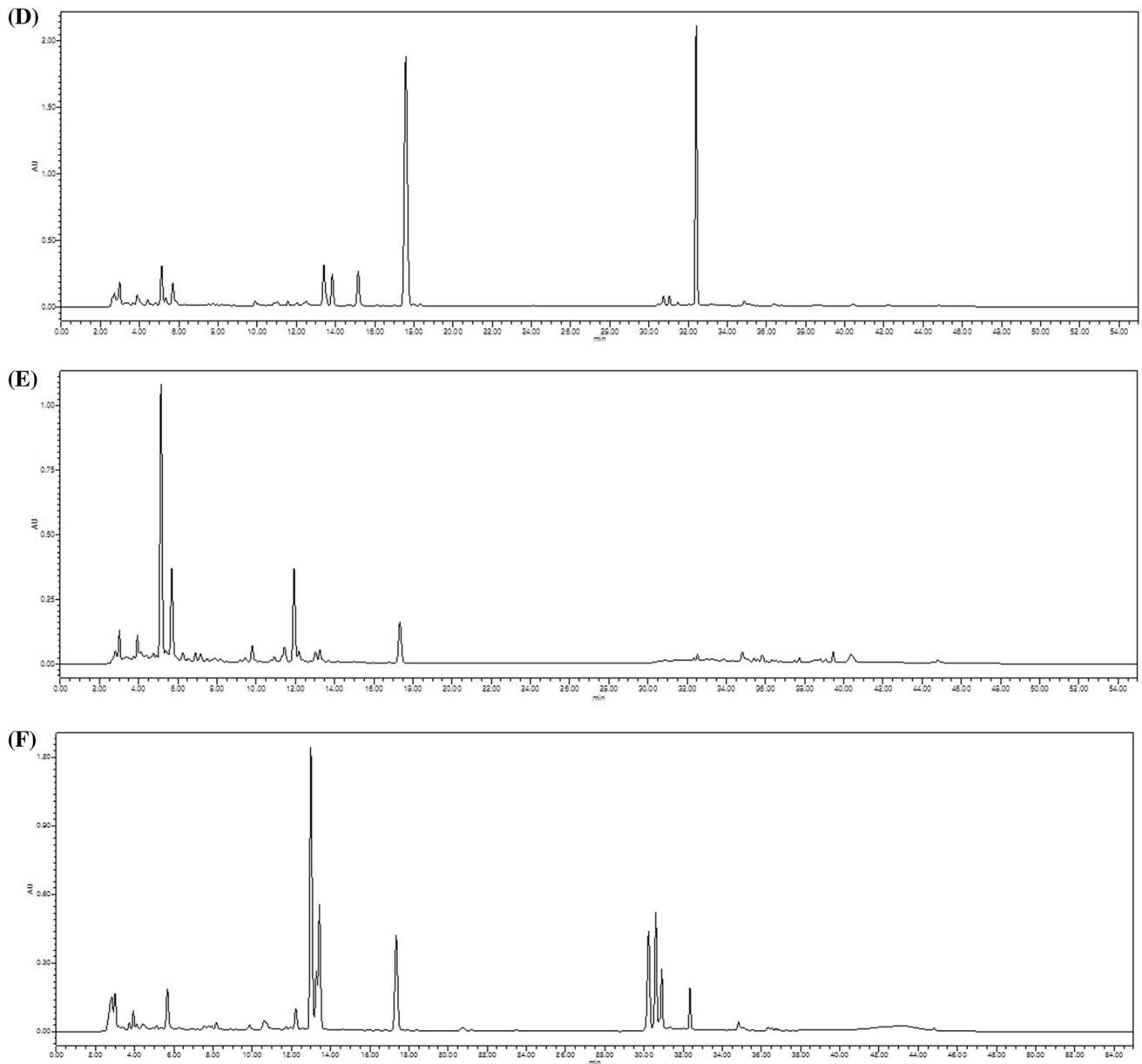


Fig. 2 continued

Table 5 Contents of compounds 1–3 in the EtOH extracts of CJM

Sample	Content (mg/g DW)			
	Cirsimaritin (1)	Hispidulin (2)	Cirsimaritin (3)	Total
CJS	0.183 ± 0.010	0.025 ± 0.002	0.026 ± 0.001	0.375 ± 0.014
CJL1	13.143 ± 0.106	1.402 ± 0.007	7.920 ± 0.044	22.580 ± 0.161
CJL2	9.347 ± 0.043	0.661 ± 0.009	7.230 ± 0.084	17.280 ± 9.130
CJR	0.387 ± 0.003	0.018 ± 0.001	0.377 ± 0.002	0.782 ± 0.006
CJF	0.845 ± 0.016	1.447 ± 0.010	2.104 ± 0.005	5.721 ± 0.040

anti-oxidant activity [25] and anti-microbial activity [26], among others.

Flavonoids are considered as strong active constituents against AR [27]. The studied compounds are identified as

flavones. Flavones have shown more activity than flavonols and flavanones [28, 29]. Liao et al. [18] have also suggested that flavones from *C. japonicum* exhibit high glucose uptake. This leads to the modulation of the

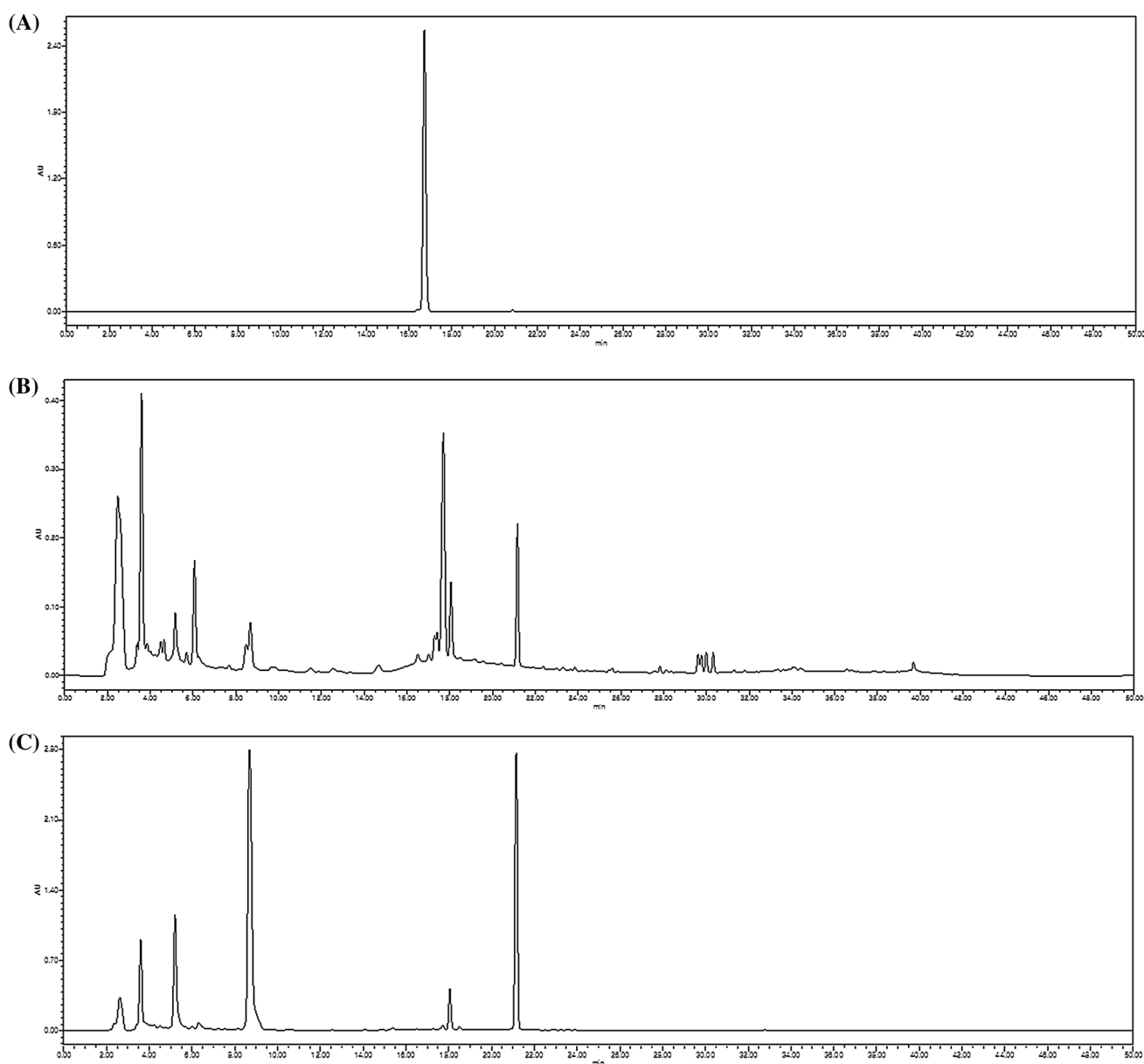


Fig. 3 HPLC chromatograms of silybin B (A) (16.73 min), EtOH extract of CJS (B), C JL1 (C), C JL2 (D), C JR (E), and C JF (F)

insulin signaling pathway which could be beneficial for those diabetic patients. Hispidulin (**2**) exhibited significant activity against AR. There are limited reports on the rat lens AR inhibitory activity of hispidulin (**2**). However, Matsuda et al. have suggested that the presence of hydroxyl group in R₂ could suggest higher AR activity [29]. In a study by Kowluru and Kennedy, they suggested that supplementation of anti-oxidant inhibited retinal metabolic abnormalities [30]. Further studies are required to understand the mechanism on how it inhibits retinopathy. Compound **2** from *Artemisia capillaris* has exhibited a potent inhibitory effect against bovine lens AR [31]. Compound **3** had no AR inhibitory activity. The

presence of sugar substituents affects ARI activity and the presence of *O*-glucoside moiety in R₄ position reduces ARI [28, 29]. This could suggest the inactivity of compound **3** as ARI.

Several previous studies have also evaluated the chemical composition of plants in the genus *Cirsium* and have isolated flavonoids, including apigenin [32], acacetin, diosmetin [33], linarin [13], luteolin [8, 14], and pectolinarin [26, 28]. In the present study, compounds **1** and **3** were considered as major constituents of C JL1 based on content analysis using HPLC (Fig. 2). In addition, more flavonoids were identified in flowers and leaves than in roots and stems including luteolin, apigenin, and hispidulin

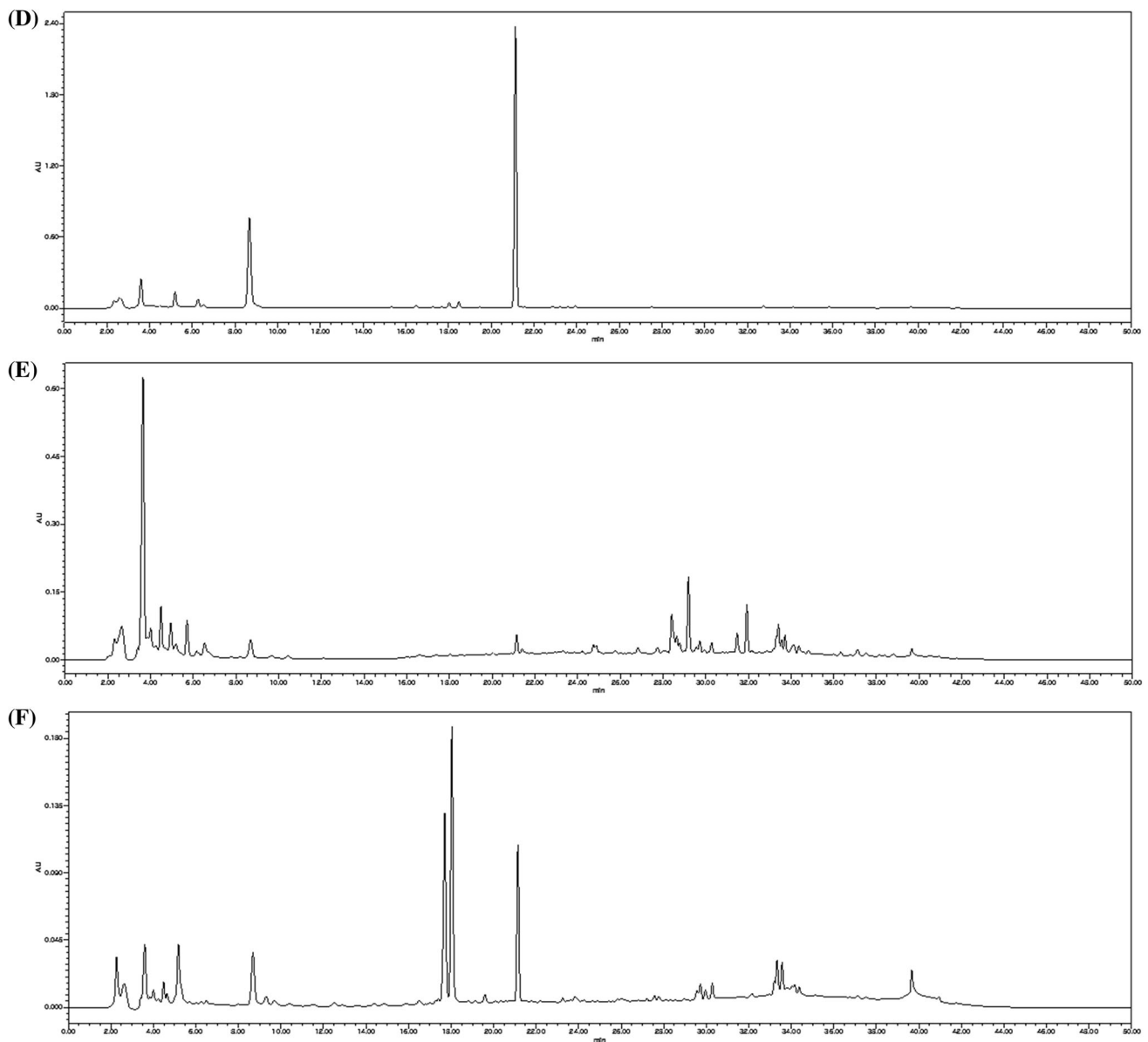


Fig. 3 continued

[23]. Park et al. [21] also identified hispidulin, cirsimaritin, and acacetin from the leaves of *C. japonicum* var. *usuriense*. This suggests that CJL1 and CJL2 contain high flavonoid contents. However, in previous studies [23, 25, 33], other flavonoids, including acacetin, apigenin, diosmetin, linarin, luteolin, pectolinarin, and silybin B, were isolated from Genus *Cirsium*. However, silybin B was not detected from the different parts of CJM (Fig. 3).

Our results suggest that the aerial part of CJM could be a useful ARI material for various diabetic complications. Analyses of flavonoids in aerial parts compared to other parts will provide useful data for various applications. The results of this experiment could be used as standard data for each part of CJM.

Acknowledgments This research was supported by the Ministry of Agriculture, Food and Rural Affairs (MAFRA), through the 2015 Healthy Local Food Branding Project of the Rural Resources Complex Industrialization Support Program.

References

1. Alberti KGMM, Zimmet PF (1998) Definition, diagnosis and classification of diabetes mellitus and its complications. Part 1: diagnosis and classification of diabetes mellitus. Provisional report of a WHO consultation. *Diabet Med* 15:539–553
2. Guariguata L, Whiting DR, Hambleton I, Beagley J, Linnenkamp U, Shaw JE (2014) Global estimates of diabetes prevalence for 2013 and projections for 2035. *Diabetes Res Clin Pract* 103:137–149

3. Shaw JE, Sicree RA, Zimmet PZ (2010) Global estimates of the prevalence of diabetes for 2010 and 2030. *Diabetes Res Clin Pract* 87:4–14
4. Dyck PJ, Kratz KM, Karnes JL, Litchy WJ, Klein R, Pach JM, Wilson DM, O'Brien PC, Melton L (1993) The prevalence by staged severity of various types of diabetic neuropathy, retinopathy, and nephropathy in a population-based cohort: the Rochester diabetic neuropathy study. *Neurology* 43:817
5. Goldin A, Beckman JA, Schmidt AM, Creager MA (2006) Advanced glycation end products. *Circulation* 114:597–605
6. Lee AY, Chung SS (1999) Contributions of polyol pathway to oxidative stress in diabetic cataract. *FASEB J* 13:23–30
7. Oka M, Kat N (2001) Aldose reductase inhibitors. *J Enzym Inhib* 16:465–473
8. Jung HA, Kim YS, Choi JS (2009) Quantitative HPLC analysis of two key flavonoids and inhibitory activities against aldose reductase from different parts of the Korean thistle, *Cirsium maackii*. *Food Chem Toxicol* 47:2790–2797
9. Mok SY, Lee SL, Kim HM, Lee JM, Lee DG, Ahn YH, Park CG, Cho EJ, Lee S (2011) Inhibition of rat lens aldose reductase by flavonoids from dandelions. *Nat Prod Sci* 17:130–134
10. Kim HM, Lee DG, Lee S (2015) Plant-derived molecules from *Saussurea grandifolia* as inhibitors of aldose reductase. *J Korean Soc Appl Biol Chem* 58:365–371
11. Liu S, Zhang J, Li D, Liu W, Luo X, Zhang R, Li L, Zhao J (2007) Anticancer activity and quantitative analysis of flavone of *Cirsium japonicum* DC. *Nat Prod Res* 21:915–922
12. Liu S, Luo X, Li D, Zhang J, Qiu DL, Liu W, She L, Yang Z (2006) Tumor inhibition and improved immunity in mice treated with flavone from *Cirsium japonicum* DC. *Int Immunopharmacol* 6:1387–1393
13. Genzera M, Pocher A, Stuppner H (2005) Differentiation of *Cirsium japonicum* and *C. setosum* by TLC and HPLC-MS. *Phytochem Anal* 16:205–209
14. Thao NTP, Cuong TD, Hung TM, Lee JH, Na M, Son JK, Jung HJ, Fang Z, Woo MH, Choi JS, Min BS (2011) Simultaneous determination of bioactive flavonoids in some selected Korean thistles by high-performance liquid chromatography. *Arch Pharm Res* 34:455–461
15. Zhang Z, Jia P, Zhang X, Zhang Q, Yang H, Shi H, Zhang L (2014) LC-MS/MS determination and pharmacokinetic study of seven flavonoids in rat plasma after oral administration of *Cirsium japonicum* DC. extract. *J Ethnopharmacol* 158:66–75
16. Yoo SK, Bae YM (2012) Phylogenetic and chemical analyses of *Cirsium pendulum* and *Cirsium setidens* inhabiting Korea. *J Life Sci* 22:1120–1125
17. Jung HA, Jin SE, Min BS, Kim BW, Choi JS (2012) Anti-inflammatory activity of Korean thistle *Cirsium maackii* and its major flavonoid, luteolin 5-*O*-glucoside. *Food Chem Toxicol* 50:2171–2179
18. Liao Z, Wu Z, Wu M (2012) *Cirsium japonicum* flavones enhance adipocyte differentiation and glucose uptake in 3T3-L1 cells. *Biol Pharm Bull* 35:855–860
19. Sato S, Kador PF (1990) Inhibition of aldehyde reductase by aldose reductase inhibitors. *Biochem Pharmacol* 40:1033–1042
20. Hyun HB, Shrestha S, Boo KH, Kim Cho S (2015) Evaluation of antioxidant potential of ethyl acetate fraction of *Rosmarinus officinalis* L. and its major components. *J Korean Soc Appl Biol Chem* 58:715–722
21. Park JC, Lee JH, Choi JW (1995) Isolation and biological activity of flavone glycosides from the aerial part of *Cirsium japonicum* var. *ussuriense* in Korea. *J Korean Soc Food Nutr* 24:906–910
22. Chung AK, Kwon HC, Choi SZ, Min YD, Lee SO, Lee WB, Yang MC, Lee KH, Nam JH, Kwak JH, Lee KR (2002) Norisoprenoids from *Cirsium rhinoceros*. *Korean J Pharmacogn* 33:81–84
23. Kim SJ, Kim GH (2003) Identification for flavones in different parts of *Cirsium japonicum*. *J Food Sci Nutr* 8:330–335
24. Jung M, Park M, Lee HC, Kang YH, Kang ES, Kim SK (2006) Antidiabetic agents from medicinal plants. *Curr Med Chem* 13:1203–1218
25. Jeong DM, Jung HA, Choi JS (2008) Comparative antioxidant activity and HPLC profiles of some selected Korean thistles. *Arch Pharm Res* 31:28–33
26. Nazaruk J, Jakoniuk P (2005) Flavonoid composition and antimicrobial activity of *Cirsium rivulare* (Jacq.) All. flowers. *J Ethnopharmacol* 102:208–212
27. Varma SD, Mikuni I, Kinoshita JH (1975) Flavonoids as inhibitors of lens aldose reductase. *Science* 188:1215–1216
28. Shimizu M, Ito T, Terashima S, Hayashi T, Arisawa M, Morita N, Kurokawa S, Ito K, Hashimoto Y (1984) Inhibition of lens aldose reductase by flavonoids. *Phytochemistry* 23:1885–1888
29. Matsuda H, Morikawa T, Toguchida I, Yoshikawa M (2002) Structural requirements of flavonoids and related compounds for aldose reductase inhibitory activity. *Chem Pharm Bull* 50:788–795
30. Kowluru RA, Kennedy A (2001) Therapeutic potential of antioxidants and diabetic retinopathy. *Expert Opin Investig Drugs* 10:1665–1676
31. Okada Y, Miyauchi N, Suzuki K, Kobayashi T, Tsutsui C, Mayuzumi K, Nishibe S, Okuyama T (1995) Search for naturally occurring substances to prevent the complications of diabetes. II. Inhibitory effect of coumarin and flavonoid derivatives on bovine lens aldose reductase and rabbit platelet aggregation. *Chem Pharm Bull* 43:1385–1387
32. Yin J, Heo SI, Wang MH (2008) Antioxidant and antidiabetic activities of extracts from *Cirsium japonicum* roots. *Nutr Res Pract* 2:247–251
33. Jiang XL, Fan CL, Ye WC (2006) Studies on the chemical constituents of *Cirsium japonicum* DC. *Chin Trad Herb Drugs* 37:510–512