

ORIGINAL INVESTIGATION

Open Access



Impact of diabetes duration and degree of carotid artery stenosis on major adverse cardiovascular events: a single-center, retrospective, observational cohort study

Minsu Noh¹, Hyunwook Kwon¹, Chang Hee Jung², Sun U. Kwon³, Min Seon Kim², Woo Je Lee², Joong Yeol Park², Youngjin Han¹, Hyangkyoung Kim⁴, Tae-Won Kwon¹ and Yong-Pil Cho^{1*} 

Abstract

Background: We aimed to investigate the impact of diabetes duration and carotid artery stenosis (CAS) on the occurrence of major adverse cardiovascular events (MACE) in patients with type 2 diabetes mellitus (T2DM) without clinical cardiovascular disease.

Methods: A total of 2006 patients with T2DM, without clinical cardiovascular disease, aged >50 years, and who underwent baseline carotid Doppler ultrasound screening with regular follow-ups at the outpatient clinic of our diabetes center, were stratified into four subgroups according to diabetes duration and CAS degree. The primary outcomes included the occurrence of MACE, defined as fatal or nonfatal stroke and myocardial infarction, and all-cause mortality.

Results: The difference in the MACE incidence was significantly greater in patients with a longer diabetes duration (≥ 10 years) and significant CAS (50–69% luminal narrowing) ($p < 0.001$). Analysis of individual MACE components indicated a trend towards an increased incidence of stroke ($p < 0.001$), parallel to a longer diabetes duration and significant CAS. In contrast, the risk of myocardial infarction was significantly higher in patients with a diabetes duration <10 years and significant CAS ($p = 0.039$). Multivariate regression analysis showed that patients with both a longer diabetes duration and significant CAS demonstrated additive and very high risks of MACE (hazard ratio [HR], 2.07; 95% confidence interval [CI] 1.17–3.66; $p = 0.012$) and stroke (HR, 3.38; 95% CI 1.54–7.44; $p = 0.002$).

Conclusions: The risk of MACE is significantly greater in patients with T2DM, without clinical cardiovascular disease, who have both a longer diabetes duration and significant CAS, compared with those who have a shorter duration and/or nonsignificant CAS.

Keywords: Cardiovascular diseases, Carotid artery stenosis, Diabetes mellitus

Background

The incidence of diabetes-related morbidity and mortality declined between 1990 and 2010 owing to improvements in medical treatment [1]. Despite the presence of

certain controversial findings, diabetes duration is considered an important contributor to the progression of atherosclerotic cardiovascular disease (CVD); moreover, carotid atherosclerosis is linked to a higher risk of major adverse cardiovascular events (MACE) [2–8]. Although previous studies have assessed the association between diabetes duration and the risk of MACE [9–11], it is unclear whether there is a comparable increased risk in patients with type 2 diabetes mellitus (T2DM) without

*Correspondence: ypcho@amc.seoul.kr

¹ Department of Surgery, University of Ulsan College of Medicine and Asan Medical Center, Asanbyeongwon-gil 86, Songpa-gu, Seoul 05505, South Korea

Full list of author information is available at the end of the article

clinical CVD. Many population-based studies on the relationship of the carotid intima-media thickness and the presence of focal plaque with CVD have shown that Doppler ultrasound (DUS) screening of carotid artery stenosis (CAS) can identify potentially high-risk patients in whom subsequent MACE may occur [12, 13]. Nevertheless, it is unknown whether both a longer duration of diabetes and a higher degree of CAS could result in an increased risk for the subsequent occurrence of MACE, in patients with T2DM, without clinical CVD. Further, it is also uncertain whether carotid DUS screening could be a valuable tool that can assist in CVD risk stratification for the application of preventive strategies in these patients.

In the present study, we aimed to investigate the impact of diabetes duration and CAS on the subsequent occurrence of MACE in patients with T2DM, without clinical CVD, and to determine the risk factors associated with clinical outcomes in these patients.

Methods

Study design and population

In this single-center, retrospective, observational cohort study, we analyzed data extracted from the medical records of patients. The study protocol was approved by our hospital's institutional review board, which waived the need for informed consent. A total of 3136 consecutive patients with T2DM aged >50 years, who first visited the outpatient clinic of our diabetes center between January 2009 and December 2011, regardless of their diabetes duration, and underwent baseline carotid DUS screening with regular follow-ups were screened for inclusion in this study. The exclusion criteria were evidences of CVD including cerebral infarction, myocardial infarction (MI), angina, heart failure, and valvular heart disease; history of carotid or coronary revascularization; and severe CAS ($\geq 70\%$ stenosis based on the North American Symptomatic Carotid Surgery Trial [NASCET] criteria) on baseline DUS requiring carotid revascularization. Patients who were lost to follow-up were also excluded from the analysis.

Clinical evaluation and definition of risk factor variables

The diagnosis of T2DM was based on the plasma glucose criteria, defined as either (i) a fasting plasma glucose level of ≥ 126 mg/dL, (ii) a 2-h plasma glucose level of ≥ 200 mg/dL after a 75-g oral glucose tolerance test, or (iii) a glycated hemoglobin level of $\geq 6.5\%$ [14]. T2DM was confirmed by a result above the diagnostic threshold in two out of the three above-mentioned tests. In the absence of unequivocal hyperglycemia, results were confirmed by means of repeat testing. Patients who indicated the use of antidiabetic medications (oral hypoglycemia

agents and/or insulin) on a self-report questionnaire were deemed to have T2DM. Diabetes onset was defined as the time when any of the above criteria was first met. Information on diabetes onset was obtained during patient interviews or by accessing medical records. Diabetes duration was estimated as the difference between the current age and the age at diabetes onset, and was classified as shorter (<10 years) or longer (≥ 10 years). DUS was performed by experienced radiologists in our diabetes center. The degree of CAS was estimated on the basis of peak systolic velocity (PSV) and end-diastolic velocity (EDV) values recorded from within the most stenotic segment in addition to luminal narrowing based on the NASCET [15]. Significant CAS was defined as 50–69% narrowing of the diameter of the common carotid artery, carotid bifurcation, or internal carotid artery, determined through analysis of the PSV in the range of 125–230 cm/s and EDV in the range of 40–100 cm/s [15]. The patients were categorized into four groups according to the diabetes duration and CAS degree: shorter diabetes duration and nonsignificant CAS (group 1), longer diabetes duration and nonsignificant CAS (group 2), shorter diabetes duration and significant CAS (group 3), and longer diabetes duration and significant CAS (group 4).

Body mass index was defined as weight (kg) divided by height squared (m^2). Hypertension was defined as the use of antihypertensive medications or a systolic and/or diastolic blood pressure >140 and/or 90 mmHg, respectively (average of two readings taken by the examining physician). Dyslipidemia was defined as the use of lipid-lowering medications, a fasting total serum cholesterol level of >200 mg/dL, a low-density lipoprotein cholesterol level of >120 mg/dL, a high-density lipoprotein cholesterol level of <40 mg/dL, or a triglyceride level of >150 mg/dL [16]. Chronic kidney disease was defined as an estimated glomerular filtration rate of <60 mL/min/1.73/m², which was assessed by using the modification of diet in renal disease formula [17].

Outcomes of interest and follow-up

The primary outcomes included the occurrence of MACE, defined as fatal or nonfatal stroke and MI, and all-cause mortality. Only the first event of each outcome was included in the analysis.

Stroke was defined as an acute neurological event with focal symptoms and signs lasting for at least 24 h that were consistent with focal cerebral ischemia. Strokes were categorized as major or minor. A major stroke was present even after 7 days and increased the National Institutes of Health Stroke Scale (NIHSS) score of the patient by ≥ 4 points. A minor stroke was a transient ischemic attack, amaurosis fugax, or a stroke that completely resolved within 7 days and increased the NIHSS score

of the patient by ≤ 3 points. We included only ischemic strokes in the analysis. MI was defined as any increase in creatine kinase–myocardial band or cardiac troponin I above the upper limit of the reference range, with either chest pain, symptoms consistent with ischemia, or electrocardiographic evidence of ischemia (i.e., new ST segment depression or elevation, or >1 mm elevation in two or more contiguous leads) during follow-up.

Follow-up visits with laboratory evaluations were scheduled at approximately 6-month intervals, and all medication adjustments were made by the patient's health-care provider at our diabetes center. Follow-up cardiac enzyme levels, 12-lead electrocardiograms, and carotid DUS were performed depending on individual CVD risk factors. Follow-up ceased with the occurrence of MACE. Risk factors of interest, clinical characteristics, and long-term clinical outcomes for all patients were recorded in an Excel database (Microsoft Corp., Redmond, WA, USA) and analyzed retrospectively.

Statistical analysis

Categorical variables are reported as frequencies or percentages, and continuous variables as means and standard deviations or medians and interquartile ranges (IQRs). Categorical variables were compared by using Chi square tests with the Bonferroni correction for multiple comparisons, whereas continuous variables were compared by using one-way analysis of variance with Tukey's test or Kruskal–Wallis test for multiple comparisons, as appropriate. The cumulative probability of events was estimated with Kaplan–Meier analysis and compared with that estimated with the log-rank test. Univariate and multivariate analyses of the association of clinical variables with each outcome were conducted with Cox proportional hazards modeling, by using the event of interest and period from study enrollment to the date of the event or last follow-up as the outcome. Univariate Cox proportional hazard regression models were fitted to calculate hazard ratios (HRs) with 95% confidence intervals (CIs) to estimate the association of clinical variables with the occurrence of MACE. Variables with a p value of <0.1 on univariate analysis were included in multivariate Cox proportional hazard regression models, by using the backward elimination method. A p value of <0.05 was considered statistically significant. Statistical analyses were performed with SPSS version 21.0 (SPSS Inc., Chicago, IL, USA).

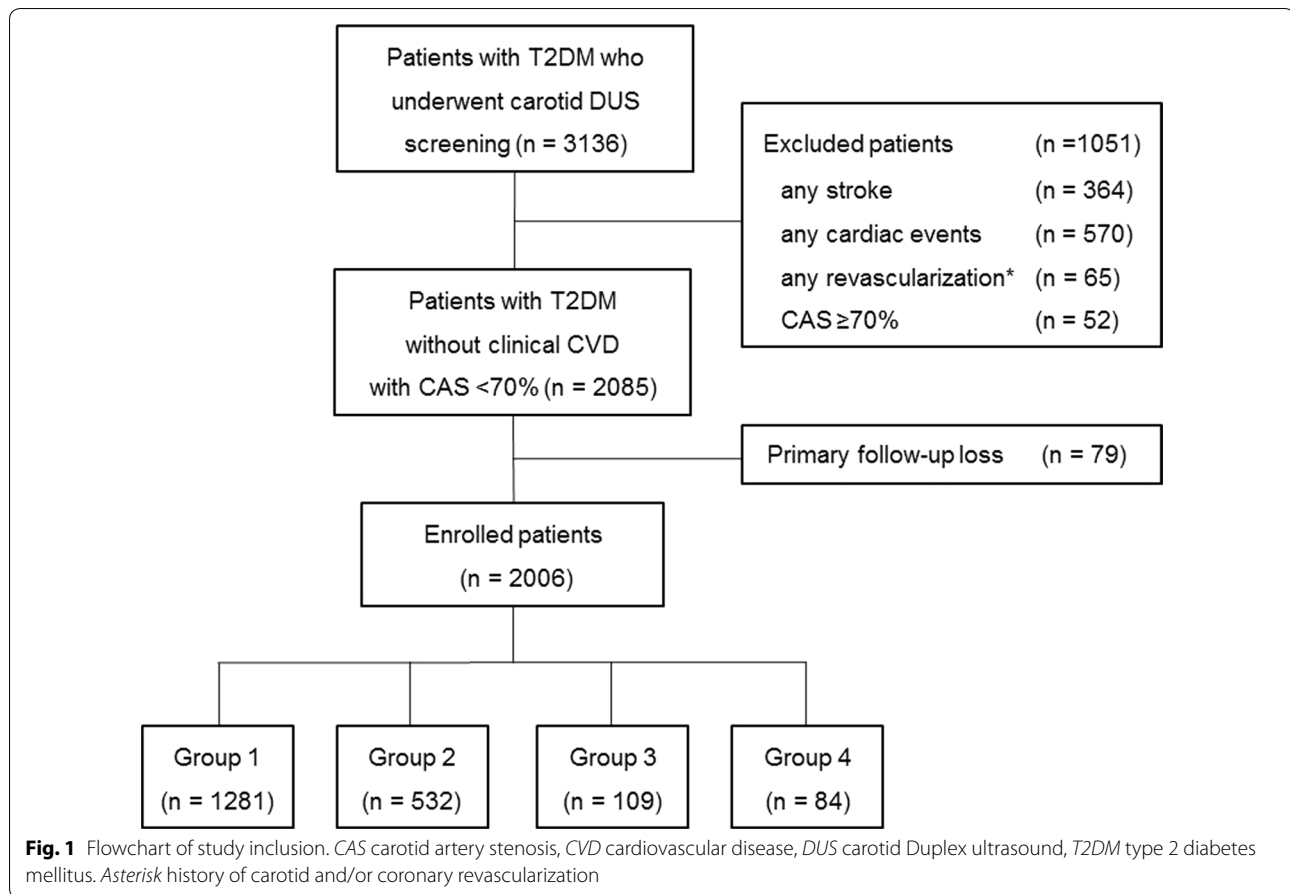
Results

Of the 3136 consecutive patients with T2DM who first visited the outpatient clinic of our diabetes center and were aged >50 years, we excluded 934 patients (29.8%) with prior CVD, 65 (2.1%) with a history of carotid or

coronary revascularization, and 52 (1.7%) with severe CAS on baseline DUS requiring carotid revascularization. A further 79 patients (2.5%) who were lost to follow-up were also excluded from the analysis. The remaining 2006 patients (64.0%) without clinical CVD at baseline, and with a reported CAS of $<70\%$ on baseline DUS and regular follow-ups, were included in the analysis (Fig. 1). Eligible patients were stratified into four groups according to the diabetes duration and CAS degree as follows: group 1 ($n = 1281$, 63.9%), group 2 ($n = 532$, 26.5%), group 3 ($n = 109$, 5.4%), and group 4 ($n = 84$, 4.2%).

The baseline characteristics of the patients are presented in Table 1. During the mean follow-up period of 55.7 ± 21.2 months, the MACE incidence was found to be 5.9, 8.6, 11.9, and 20.2% in groups 1–4, respectively (Table 2). The difference was significantly greater in patients with a longer diabetes duration and significant CAS ($p < 0.001$). Analysis of the individual MACE components indicated a trend toward an increased incidence of stroke ($p < 0.001$), but not of all-cause mortality ($p = 0.694$), in parallel with a longer diabetes duration and the presence of significant CAS, whereas the risk of MI was significantly higher in patients with diabetes duration <10 years and significant CAS (group 3) ($p = 0.039$). Kaplan–Meier survival analysis showed that patients with a longer diabetes duration and significant CAS had a decreased MACE-free survival rate ($p < 0.001$), as compared with those with a shorter diabetes duration and nonsignificant CAS (Fig. 2; Additional file 1: Figure S1).

When the combined effects of diabetes duration and CAS were analyzed on multivariate Cox proportional hazard regression analysis, after adjusting for confounding variables, patients with both a longer diabetes duration and significant CAS demonstrated additive and very high risks for MACE occurrence (HR, 2.07; 95% CI 1.17–3.66; $p = 0.012$; Table 3) and stroke (HR, 3.38; 95% CI 1.54–7.44; $p = 0.002$; Additional file 2: Table S1). Male sex (HR, 1.98; 95% CI 1.10–3.57; $p = 0.024$), hypertension (HR, 1.66; 95% CI 1.03–2.70; $p = 0.039$), and poor glycemic control, as reflected by the glycosylated hemoglobin level (HR, 1.27; 95% CI 1.09–1.48; $p = 0.002$), were all significantly associated with MI (Additional file 2: Table S2), whereas age (HR, 1.05; 95% CI 1.00–1.11; $p = 0.039$), chronic kidney disease (HR, 4.29; 95% CI 1.41–13.04; $p = 0.010$), and insulin use (HR, 2.54; 95% CI 1.01–6.38; $p = 0.047$) were associated with all-cause mortality (Additional file 2: Table S3). Both a longer diabetes duration and significant CAS were not associated with increased risks of MI (HR, 1.60; 95% CI 0.57–4.50; $p = 0.374$) and all-cause mortality (not applicable). Multivariate analyses that evaluated the respective effects of diabetes duration and CAS on MI indicated that CAS was



significantly associated with the risk of MI ($p = 0.007$), whereas diabetes duration was not associated with any such risk ($p = 0.908$) (data not shown).

Discussion

The major finding of the present study on patients with T2DM without clinical CVD was that the cumulative risk of MACE is significantly higher in those with a longer diabetes duration and significant CAS. Although previous studies have described the risk of MACE conferred by the presence and severity of CAS [4, 18], the association between the diabetes duration and MACE occurrence remains controversial; in fact, certain studies have indicated an association, whereas others have not [19, 20]. Furthermore, no reports definitely document the cumulative effects of both a longer diabetes duration and significant CAS on long-term clinical outcomes in patients with T2DM, without clinical CVD. The present study evaluated the impact of both diabetes duration and CAS degree, and found that a longer diabetes duration and significant CAS had additive and much higher risks for MACE and stroke, although the diabetes duration did not affect the risk of MI.

The risk of MI was significantly higher in patients with diabetes duration <10 years and significant CAS (group 3), which primarily included those with male sex and a higher prevalence of hypertension. Considering that male sex and hypertension were significantly associated with an increased risk of MI in our analysis (Additional file 2: Table S2), and that the number of patients in groups 3 and 4 was small, we speculated that these baseline differences may have affected the MI incidence between the study populations. Additional large cohort studies are required to evaluate the association between diabetes duration and MI in patients with T2DM without clinical CVD. Our current results also showed that the rate of all-cause mortality was markedly low, as compared with that in other population-based studies, because our study included only the first event of each outcome and most of the deaths from cardiovascular causes were excluded from all-cause mortality.

CVD is the leading cause of morbidity and mortality worldwide, and its prevention is less costly than the treatment of its complications. Hence, the identification of subclinical disease during the asymptomatic phase has emerged as a public health and economic objective

Table 1 Baseline characteristics of the study population stratified by diabetes duration and carotid artery stenosis

| | Group 1 | Group 2 | Group 3 | Group 4 | p value |
|------------------------------------|--------------------|--------------------|--------------------|--------------------|---------|
| No. of patients | 1281 | 532 | 109 | 84 | |
| DM duration (years) | 2.7 (0.5–7.0) | 15.5 (13.0–20.0) | 3.9 (2.0–8.0) | 15.6 (13.0–21.0) | |
| Mean age (years) | 60.2 ± 7.3 | 63.0 ± 7.8 | 65.5 ± 7.9 | 69.4 ± 7.3 | <0.001 |
| Male sex | 872 (68.1) | 330 (62.0) | 93 (85.3) | 56 (66.7) | <0.001 |
| BMI (kg/m ²) | 25.2 ± 3.2 | 24.5 ± 3.1 | 24.5 ± 3.1 | 23.9 ± 3.8 | <0.001 |
| Risk factor | | | | | |
| Hypertension | 608 (47.5) | 290 (54.5) | 76 (69.7) | 55 (65.5) | <0.001 |
| Dyslipidemia | 506 (39.5) | 191 (35.9) | 32 (29.4) | 30 (35.7) | 0.119 |
| CKD | 25 (2.0) | 36 (6.8) | 6 (5.5) | 9 (10.7) | <0.001 |
| Current smoker | 248 (19.4) | 68 (12.8) | 18 (16.5) | 10 (11.9) | 0.004 |
| Medication | | | | | |
| Antiplatelet | 339 (26.5) | 207 (38.9) | 65 (59.6) | 40 (47.6) | <0.001 |
| Statin | 548 (42.8) | 262 (49.2) | 52 (47.7) | 45 (53.6) | 0.027 |
| Antihypertensive | 531 (41.5) | 238 (44.7) | 69 (63.3) | 47 (56.0) | <0.001 |
| Insulin | 97 (7.6) | 137 (25.8) | 12 (11.0) | 20 (23.8) | <0.001 |
| Laboratory data | | | | | |
| HbA1c (%) | 7.0 ± 1.2 | 7.5 ± 1.2 | 7.2 ± 1.4 | 7.5 ± 1.3 | <0.001 |
| Cr (mg/dL) | 0.9 ± 0.5 | 1.1 ± 1.0 | 1.0 ± 0.7 | 1.2 ± 1.0 | <0.001 |
| eGFR (mL/min/1.73/m ²) | 74.5 (60.0–87.0) | 63.4 (60.0–80.0) | 61.8 (60.0–79.0) | 60.9 (57.0–75.5) | <0.001 |
| Total cholesterol (mg/dL) | 177.3 ± 38.9 | 164.0 ± 34.4 | 165.2 ± 39.7 | 170.2 ± 50.4 | <0.001 |
| HDL (mg/dL) | 50.2 ± 13.1 | 51.1 ± 14.3 | 45.8 ± 12.9 | 49.2 ± 13.2 | 0.002 |
| LDL (mg/dL) | 105.9 ± 33.0 | 94.8 ± 29.9 | 95.9 ± 32.1 | 99.1 ± 37.3 | <0.001 |
| TG (mg/dL) | 121.3 (90.0–169.0) | 112.5 (82.0–154.0) | 119.0 (84.0–185.0) | 105.3 (78.0–148.5) | 0.045 |

Continuous data are presented as mean ± standard deviation or medians (interquartile ranges); categorical data are given as numbers (%)

BMI body mass index, CKD chronic kidney disease, Cr creatinine, DM diabetes mellitus, eGFR estimated glomerular filtration rate, HbA1c glycated hemoglobin, HDL high-density lipoprotein cholesterol, LDL low-density lipoprotein cholesterol, TG triglyceride

Table 2 Major adverse cardiovascular events (MACE) in the study patients stratified according to diabetes duration and degree of carotid artery stenosis

| | Group 1 | Group 2 | Group 3 | Group 4 | p value |
|--------------------|-------------|-------------|-------------|-------------|---------|
| Number of patients | 1281 (63.9) | 532 (26.5) | 109 (5.4) | 84 (4.2) | |
| MACE | 76 (5.9) | 46 (8.6) | 13 (11.9) | 17 (20.2) | <0.001 |
| Any stroke | 23 (1.8) | 19 (3.6) | 4 (3.7) | 12 (14.3) | <0.001 |
| Major stroke | 13 (1.0) | 7 (1.3) | 2 (1.8) | 6 (7.1) | <0.001 |
| Minor stroke | 10 (0.8) | 12 (2.3) | 2 (1.8) | 6 (7.1) | <0.001 |
| MI | 39 (3.0) | 20 (3.8) | 9 (8.3) | 4 (4.8) | 0.039 |
| Death ^a | 14 (1.1) | 7 (1.3) | 0 (0.0) | 1 (1.2) | 0.694 |
| Follow-up (months) | 56.5 ± 21.9 | 54.7 ± 18.7 | 52.4 ± 23.1 | 55.0 ± 21.3 | 0.143 |

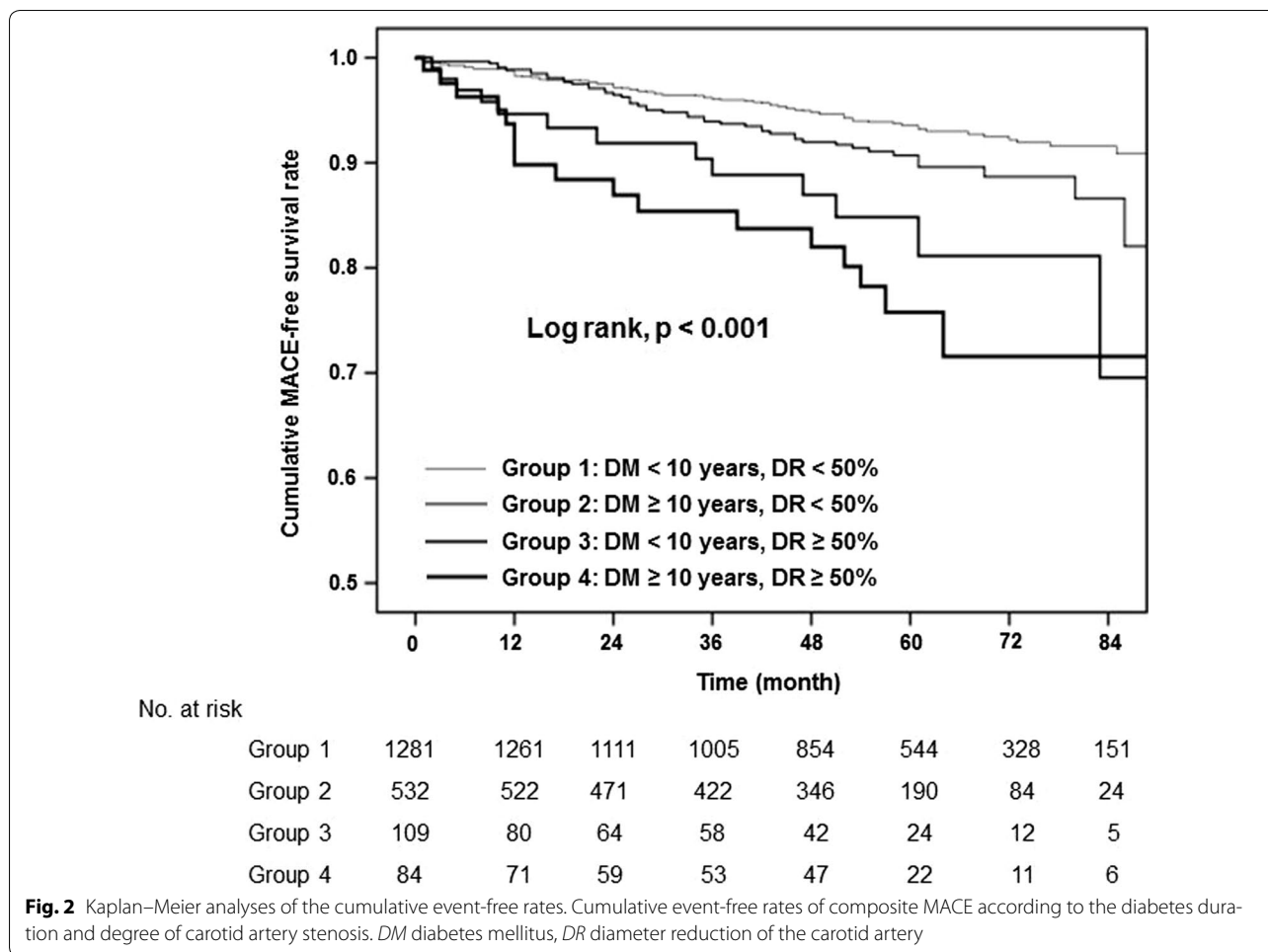
Values are presented as numbers (%)

MI myocardial infarction

^a All-cause mortality, except for deaths of cardiovascular causes

[21]. Cardiovascular risk assessment is generally recommended based on conventional risk factors. However, the predictive ability is only moderate, and a significant percentage of patients, irrespective of the conventional risk factors, present with subclinical atherosclerosis on DUS imaging along with coronary artery calcification [22,

23]. Although DUS screening of the carotid artery can identify potentially high-risk patients in whom subsequent MACE may occur, and some studies have assessed the association between CAS and MACE risk [24–28], the impact of both diabetes duration and CAS on the MACE risk of patients with T2DM without clinical CVD



remains unclear. Furthermore, although previous studies had described the risk of MACE conferred by the presence and severity of CAS in blacks and whites, there are very few reports available for Asians [4]. According to the data from the Department of Measurement and Health Information of the World Health Organization, there is a significant difference in the risk of MACE between different racial–ethnic groups; stroke is more prominent than MI in Asian general populations compared with Western general populations [29, 30]. Therefore, our findings may serve as novel data that could aid in the optimal surveillance and management of MACE risk in Asian patients with T2DM without clinical CVD.

Glucose intolerance and diabetes are risk factors for stroke and MI in Asia, as in Western countries [31]. Although Asian populations are presently less obese than Western populations, the recent Westernization of dietary habits has resulted in increasing body mass index in most Asian countries. Moreover, the prevalence of glucose intolerance and diabetes may increase further. A large-scale meta-analysis project, the Asia Pacific Cohort

Studies Collaboration, showed that the HRs of diabetes for ischemic stroke and MI are similar for both Asian and Western countries [32]. The prevalence of diabetes has been increasing throughout Asia, and the speed of increase is much faster than in Western countries [29]. Trends in increased prevalence of diabetes and higher risks of diabetes-related MACE reported by several population-based studies showed the importance of the development of primary prevention programs for this vulnerable and fastest-growing higher-risk population in Asia. In our study, the degree of CAS, as detected by using carotid DUS screening, is a simple and noninvasive marker of subclinical atherosclerosis associated with an increased risk of MACE in patients with T2DM, without clinical CVD. Furthermore, DUS screening could be a valuable tool that can assist in cardiovascular risk stratification for the application of preventive strategies.

This study has some notable limitations. First, our findings may have been subject to selection and information bias owing to the retrospective study design; hence, the incidence of MACE may have been underestimated, and

Table 3 Factors associated with the occurrence of major adverse cardiovascular events

| | Univariate analysis | | Multivariate analysis | |
|------------------|---------------------|---------|-----------------------|---------|
| | HR (95% CI) | p value | HR (95% CI) | p value |
| Age | 1.06 (1.04–1.08) | <0.001 | 1.04 (1.02–1.06) | <0.001 |
| Male sex | 1.27 (0.89–1.81) | 0.188 | NA | NA |
| Body mass index | 0.99 (0.95–1.04) | 0.775 | NA | NA |
| Hypertension | 2.33 (1.65–3.28) | <0.001 | 1.82 (1.28–2.61) | 0.001 |
| CKD | 4.29 (2.68–6.86) | <0.001 | 2.71 (1.66–4.44) | <0.001 |
| Smoking | 1.09 (0.73–1.63) | 0.667 | NA | NA |
| Antiplatelet use | 1.53 (1.11–2.11) | 0.009 | NA | NA |
| Statin use | 0.92 (0.67–1.26) | 0.589 | NA | NA |
| Insulin use | 1.62 (1.08–2.43) | 0.019 | NA | NA |
| HbA1c value | 1.22 (1.10–1.36) | <0.001 | 1.21 (1.08–1.35) | 0.001 |
| Creatinine level | 1.24 (1.09–1.41) | 0.001 | NA | NA |
| Group 1 | Reference | | | |
| Group 2 | 1.52 (1.06–2.19) | 0.023 | 1.07 (0.74–1.56) | 0.712 |
| Group 3 | 2.86 (1.59–5.15) | <0.001 | 1.93 (1.06–3.51) | 0.032 |
| Group 4 | 4.11 (2.43–6.95) | <0.001 | 2.07 (1.17–3.66) | 0.012 |

CI confidence interval, CKD chronic kidney disease, HbA1c glycated hemoglobin, HR hazard ratio, NA not applicable

the number of excluded patients was considerable. Moreover, despite efforts to optimize blood pressure, glucose, and lipid control during the management of patients at our diabetes center, we sometimes failed to achieve management goals defined by the annually updated Standards of Medical Care in Diabetes by the American Diabetes Association [33, 34]. We could not analyze microvascular complications. Furthermore, we could not evaluate carotid plaque characteristics such as ulceration, surface irregularities, and morphologic composition, because our study cohort received DUS as a routine screening for cardiovascular risk factors at our diabetes center. For routine screening of subclinical atherosclerosis of the carotid artery, the availability, ease of measurement, and cost will be of major importance in choosing the imaging methodology [4]. Imaging of carotid plaque and measurement of CAS degree is a simple noninvasive and cost-effective method. Although some methods, such as measurements of plaque area and volume, may be better in risk prediction than our method [35–37], these imaging methodologies are more complex, time consuming, expensive, and not readily available [4]. There could be intra- and inter-observer variability affecting our analyses because the reliability of DUS examination highly depends on the expertise of the examiner and the knowledge and experience of the interpreting physician. Carotid DUS was performed by accredited radiologists in our diabetes center, and all images were reviewed by two

experienced vascular surgeons. Second, our study cohort was preselected for being otherwise healthy patients with T2DM without clinical CVD. Therefore, our results may not be applicable to the general population with diabetes, and we could not compare our findings with those of other population-based studies [38, 39]. Furthermore, the cohort consists of only Korean Asians and may not be representative of other Asians or other racial-ethnic minority groups; our findings should be interpreted with caution with respect to different racial-ethnic groups because the environmental and genetic factors may differ among various racial-ethnic groups, and there may be racial-ethnic differences in the prevalence of MACE in patients with T2DM. Third, we calculated the diabetes duration at baseline by using the participant self-reported age at diabetes onset, which may have been inaccurate owing to the lag between the time of disease onset and diagnosis. There may have been several years of dysglycemia, which also increases cardiovascular risk. Furthermore, our analysis between diabetes duration and MACE was complicated by the fact that a longer diabetes duration is associated with older age, and the residual confounding effects of this association cannot be excluded. Furthermore, our current findings were obtained at a single center, resulting in a small sample size, which may limit the overall relevance of our results. Lastly, the mean follow-up duration may not have been sufficient for the occurrence of MACE.

Conclusions

The findings of the present study on patients with T2DM without clinical CVD indicated that there is a significantly higher risk of MACE in patients with a longer diabetes duration and significant CAS. In fact, both diabetes duration and CAS have additive and very high risks for MACE and stroke.

Additional files

Additional file 1: Figure S1. Kaplan–Meier analyses of the cumulative event-free rates. Cumulative event-free rates of (A) stroke, (B) myocardial infarction, and (C) all-cause mortality according to the diabetes duration and degree of carotid artery stenosis. DM, diabetes mellitus; DR, diameter reduction of the carotid artery.

Additional file 2: Table S1. Factors associated with the occurrence of stroke. **Table S2.** Factors associated with the occurrence of myocardial infarction. **Table S3.** Factors associated with the occurrence of all-cause mortality.

Abbreviations

CVD: cardiovascular disease; CAS: carotid artery stenosis; CI: confidence interval; DUS: Doppler ultrasound; EDV: end-diastolic velocity; HR: hazard ratio; MACE: major adverse cardiovascular events; MI: myocardial infarction; PSV: peak systolic velocity; T2DM: type 2 diabetes mellitus.

Authors' contributions

Conception and design: MN, YPC. Analysis and interpretation of the data: MN, HKwon, CHJ, SUK, MSK, YPC. Drafting of the article: MN, HKwon, YPC. Critical revision for important intellectual content: MN, HKwon, CHJ, MSK, YPC. Statistical expertise: MN, HKwon, YPC. Collection and assembly of data: MN, HKwon, CHJ, MSK, WJL, JYP, YH, HKim, TWK, YPC. All authors read and approved the final manuscript.

Author details

¹ Department of Surgery, University of Ulsan College of Medicine and Asan Medical Center, Asanbyeongwon-gil 86, Songpa-gu, Seoul 05505, South Korea. ² Department of Internal Medicine, University of Ulsan College of Medicine and Asan Medical Center, Asanbyeongwon-gil 86, Songpa-gu, Seoul 05505, South Korea. ³ Department of Neurology, University of Ulsan College of Medicine and Asan Medical Center, Asanbyeongwon-gil 86, Songpa-gu, Seoul 05505, South Korea. ⁴ Department of Surgery, Chung-Ang University Hospital, 102 Heukseok-ro, Dongjak-gu, Seoul 06973, South Korea.

Acknowledgements

The authors thank Min-Ju Kim in the Department of Clinical Epidemiology and Biostatistics, University of Ulsan College of Medicine and Asan Medical Center, for the support of statistical analysis.

Competing interests

The authors declare that they have no competing interests.

Availability of data and materials

The datasets used and/or analyzed during the current study are available from the corresponding author on reasonable request.

Ethics and consent to participate

The study was approved by our local ethical committee (2015-0691).

Publisher's Note

Springer Nature remains neutral with regard to jurisdictional claims in published maps and institutional affiliations.

Received: 26 April 2017 Accepted: 29 May 2017

Published online: 06 June 2017

References

- Preis SR, Hwang SJ, Coady S, Pencina MJ, D'Agostino RB Sr, Savage PJ, Levy D, Fox CS. Trends in all-cause and cardiovascular disease mortality among women and men with and without diabetes mellitus in the Framingham Heart Study, 1950–2005. *Circulation*. 2009;119(13):1728–35.
- Schramm TK, Gislason GH, Køber L, Rasmussen S, Rasmussen JN, Abildstrøm SZ, Hansen ML, Folke F, Buch P, Madsen M, et al. Diabetes patients requiring glucose-lowering therapy and nondiabetics with a prior myocardial infarction carry the same cardiovascular risk: a population study of 3.3 million people. *Circulation*. 2008;117(15):1945–54.
- Banerjee C, Moon YP, Paik MC, Rundek T, Mora-McLaughlin C, Vieira JR, Sacco RL, Elkind MS. Duration of diabetes and risk of ischemic stroke: the Northern Manhattan Study. *Stroke*. 2012;43(5):1212–7.
- Rundek T, Arif H, Boden-Albala B, Elkind MS, Paik MC, Sacco RL. Carotid plaque, a subclinical precursor of vascular events: The Northern Manhattan Study. *Neurology*. 2008;70(14):1200–7.
- Kim JJ, Hwang BH, Choi IJ, Choo EH, Lim S, Kim JK, Koh YS, Kim DB, Jang SW, Cho EJ, Lee JM, Kim PJ, Cho JH, Jung JI, Seung KB, Min JK, Chang K. Impact of diabetes duration on the extent and severity of coronary atheroma burden and long-term clinical outcome in asymptomatic type 2 diabetic patients: evaluation by coronary CT angiography. *Eur Heart J Cardiovasc Imaging*. 2015;16(10):1065–73.
- Haffner SM, Lehto S, Rönnemaa T, Pyörälä K, Laakso M. Mortality from coronary heart disease in subjects with type 2 diabetes and in nondiabetic subjects with and without prior myocardial infarction. *N Engl J Med*. 1998;339(4):229–34.
- Whiteley L, Padmanabhan S, Hole D, Isles C. Should diabetes be considered a coronary heart disease risk equivalent?: results from 25 years of follow-up in the Renfrew and Paisley survey. *Diabetes Care*. 2005;28(7):1588–93.
- Alonso N, Traveset A, Rubinat E, Ortega E, Alcubierre N, Sanahuja J, Hernández M, Betriu A, Jurjo C, Fernández E, et al. Type 2 diabetes-associated carotid plaque burden is increased in patients with retinopathy compared to those without retinopathy. *Cardiovasc Diabetol*. 2015;14:33.
- Lindsey JB, House JA, Kennedy KF, Marso SP. Diabetes duration is associated with increased thin-cap fibroatheroma detected by intravascular ultrasound with virtual histology. *Circ Cardiovasc Interv*. 2009;2(6):543–8.
- Emanuele NV. Duration of diabetes, glucose control and cardiovascular risk. *Diabetologia*. 2010;53(1):214–5.
- Natarajan S, Liao Y, Sinha D, Cao G, McGee DL, Lipsitz SR. Sex differences in the effect of diabetes duration on coronary heart disease mortality. *Arch Intern Med*. 2005;165(4):430–5.
- Meschia JF, Bushnell C, Boden-Albala B, Braun LT, Bravata DM, Chaturvedi S, Creager MA, Eckel RH, Elkind MS, Fornage M, et al. Guidelines for the primary prevention of stroke: a statement for healthcare professionals from the American Heart Association/American Stroke Association. *Stroke*. 2014;45(12):3754–832.
- O'Leary DH, Polak JF, Kronmal RA, Manolio TA, Burke GL, Wolfson SK Jr. Carotid-artery intima and media thickness as a risk factor for myocardial infarction and stroke in older adults. *Cardiovascular Health Study Collaborative Research Group*. *N Engl J Med*. 1999;340(1):14–22.
- American Diabetes Association. 2. Classification and diagnosis of diabetes. *Diabetes Care*. 2016;39(Suppl. 1):S13–22.
- Ricotta JJ, Aburahma A, Ascher E, Eskandari M, Faries P, Lal BK, Society for Vascular Surgery. Updated Society for Vascular Surgery guidelines for management of extracranial carotid disease. *J Vasc Surg*. 2011;54(3):e1–31.
- Irie Y, Katakami N, Kaneto H, Takahara M, Sakamoto K, Kosugi K, Shimomura I. The risk factors associated with ultrasonic tissue characterization of carotid plaque in type 2 diabetic patients. *J Diabetes Complicat*. 2014;28(4):523–7.
- Levey AS, Coresh J, Greene T, Stevens LA, Zhang YL, Hendriksen S, Kusek JW, Van Lente F, Chronic Kidney Disease Epidemiology Collaboration. Using standardized serum creatinine values in the modification of diet in renal disease study equation for estimating glomerular filtration rate. *Ann Intern Med*. 2006;145(4):247–54.
- Good E, Länne T, Wilhelm E, Perk J, Jaarsma T, de Muinck E. High-grade carotid artery stenosis: a forgotten area in cardiovascular risk management. *Eur J Prev Cardiol*. 2016;23(13):1453–60.
- de Kreutzenberg SV, Fadini GP, Guzzinati S, Mazzucato M, Volpi A, Coracina A, Avogaro A. Carotid plaque calcification predicts future cardiovascular events in type 2 diabetes. *Diabetes Care*. 2015;38(10):1937–44.
- Fox CS, Sullivan L, D'Agostino RB Sr, Wilson PW, Framingham Heart Study. The significant effect of diabetes duration on coronary heart disease mortality: The Framingham Heart Study. *Diabetes Care*. 2004;27(3):704–8.
- Baber U, Mehran R, Sartori S, Schoos MM, Sillesen H, Muntendam P, Garcia MJ, Gregson J, Pocock S, Falk E, et al. Prevalence, impact, and predictive value of detecting subclinical coronary and carotid atherosclerosis in asymptomatic adults: the Bioluminescence study. *J Am Coll Cardiol*. 2015;65(11):1065–74.
- Naqvi TZ, Mendoza F, Rafii F, Gransar H, Guerra M, Lepor N, Berman DS, Shah PK. High prevalence of ultrasound detected carotid atherosclerosis in subjects with low Framingham risk score: potential implications for screening for subclinical atherosclerosis. *J Am Soc Echocardiogr*. 2010;23(8):809–15.
- Rassi CH, Churchill TW, Tavares CA, Fahel MG, Rassi FP, Uchida AH, Wajchenberg BL, Lerario AC, Hulten E, Nasir K, et al. Use of imaging and clinical data to screen for cardiovascular disease in asymptomatic diabetics. *Cardiovasc Diabetol*. 2016;15:28.
- Cea Soriano L, Johansson S, Stefansson B, Rodríguez LA. Cardiovascular events and all-cause mortality in a cohort of 57,946 patients with type 2 diabetes: associations with renal function and cardiovascular risk factors. *Cardiovasc Diabetol*. 2015;14:38.
- Raffield LM, Hsu FC, Cox AJ, Carr JJ, Freedman BI, Bowden DW. Predictors of all-cause and cardiovascular disease mortality in type 2 diabetes: Diabetes Heart Study. *Diabetol Metab Syndr*. 2015;7:58.

26. Li MF, Zhao CC, Li TT, Tu YF, Lu JX, Zhang R, Chen MY, Bao YQ, Li LX, Jia WP. The coexistence of carotid and lower extremity atherosclerosis further increases cardio-cerebrovascular risk in type 2 diabetes. *Cardiovasc Diabetol*. 2016;15:43.
27. Shore AC, Colhoun HM, Natali A, Palombo C, Östling G, Aizawa K, Kennbäck C, Casanova F, Persson M, Gooding K, SUMMIT consortium, et al. Measures of atherosclerotic burden are associated with clinically manifest cardiovascular disease in type 2 diabetes: a European cross-sectional study. *J Intern Med*. 2015;278(3):291–302.
28. Byrkjeland R, Stensæth KH, Anderssen S, Njerve IU, Arnesen H, Seljeflot I, Solheim S. Effects of exercise training on carotid intima-media thickness in patients with type 2 diabetes and coronary artery disease. Influence of carotid plaques. *Cardiovasc Diabetol*. 2016;15:13.
29. Ueshima H, Sekikawa A, Miura K, Turin TC, Takashima N, Kita Y, Watanabe M, Kadota A, Okuda N, Kadowaki T, et al. Cardiovascular disease and risk factors in Asia: a selected review. *Circulation*. 2008;118(25):2702–9.
30. Jee SJ, Suh I, Kim IS, Appel LJ. Smoking and atherosclerosis cardiovascular disease in men with low levels of serum cholesterol: the Korea Medical Insurance Corporation Study. *JAMA*. 1999;282(22):2149–55.
31. NIPPON DATA80 Research Group. Risk assessment chart for death from cardiovascular disease based on a 19-year follow-up study of a Japanese representative population. *Circ J*. 2006;70(10):1249–55.
32. Woodward M, Zhang X, Barzi F, Pan W, Ueshima H, Rodgers A, MacMahon S, Asia Pacific Cohort Studies Collaboration. The effects of diabetes on the risks of major cardiovascular diseases and death in the Asia-Pacific region. *Diabetes Care*. 2003;26(2):360–6.
33. American Diabetes Association. Approaches to glycemic treatment. Sec. 7. In *Standards of Medical Care in Diabetes—2016*. *Diabetes Care*. 2016;39(Suppl. 1):S52–9.
34. American Diabetes Association. Cardiovascular disease and risk management. Sec. 8. In *Standards of Medical Care in Diabetes—2016*. *Diabetes Care*. 2016;39(Suppl. 1):S60–71.
35. Spence JD, Eliasziw M, DiCicco M, Hackam DG, Galil G, Lohmann T. Carotid plaque area: a tool for targeting and evaluating vascular preventive therapy. *Stroke*. 2002;33(12):2916–22.
36. Brook RD, Bard RL, Patel S, Rubenfire M, Clarke NS, Kazerooni EA, Wakefield TW, Henke PK, Eagle KA. A negative carotid plaque area test is superior to other noninvasive atherosclerosis studies for reducing the likelihood of having underlying significant coronary artery disease. *Arterioscler Thromb Vasc Biol*. 2006;26(3):656–62.
37. Spence JD. Technology insight: ultrasound measurement of carotid plaque—patient management, genetic research, and therapy evaluation. *Nat Clin Pract Neurol*. 2006;2(11):611–9.
38. Wannamethee SG, Shaper AG, Whincup PH, Lennon L, Sattar N. Impact of diabetes on cardiovascular disease risk and all-cause mortality in older men: influence of age at onset, diabetes duration, and established and novel risk factors. *Arch Intern Med*. 2011;171(5):404–10.
39. Yeap BB, McCaul KA, Flicker L, Hankey GJ, Almeida OP, Gollidge J, Norman PE. Diabetes, myocardial infarction and stroke are distinct and duration-dependent predictors of subsequent cardiovascular events and all-cause mortality in older men. *J Clin Endocrinol Metab*. 2015;100(3):1038–47.

Submit your next manuscript to BioMed Central
and we will help you at every step:

- We accept pre-submission inquiries
- Our selector tool helps you to find the most relevant journal
- We provide round the clock customer support
- Convenient online submission
- Thorough peer review
- Inclusion in PubMed and all major indexing services
- Maximum visibility for your research

Submit your manuscript at
www.biomedcentral.com/submit

