

Effect of Timing of Do-Not-Resuscitate Orders on the Clinical Outcome of Critically Ill Patients

Moon Seong Baek, M.D., Younsuck Koh, M.D., Ph.D., Sang-Bum Hong, M.D., Ph.D.,
Chae-Man Lim, M.D., Ph.D., and Jin Won Huh, M.D., Ph.D.

Department of Pulmonary and Critical Care Medicine, Asan Medical Center, University of Ulsan College of Medicine, Seoul, Korea

Background: Many physicians hesitate to discuss do-not-resuscitate (DNR) orders with patients or family members in critical situations. In the intensive care unit (ICU), delayed DNR decisions could cause unintentional cardiopulmonary resuscitation, patient distress, and substantial cost. We investigated whether the timing of DNR designation affects patient outcome in the medical ICU.

Methods: We enrolled retrospective patients with written DNR orders in a medical ICU (13 bed) from June 1, 2014 to May 31, 2015. The patients were divided into two groups: early DNR patients for whom DNR orders were implemented within 48 h of ICU admission, and late DNR patients for whom DNR orders were implemented more than 48 h after ICU admission.

Results: Herein, 354 patients were admitted to the medical ICU and among them, 80 (22.6%) patients had requested DNR orders. Of these patients, 37 (46.3%) had designated DNR orders within 48 hours of ICU admission and 43 (53.7%) patients had designated DNR orders more than 48 hours after ICU admission. Compared with early DNR patients, late DNR patients tended to withhold or withdraw life-sustaining management (18.9% vs. 37.2%, $p = 0.072$). DNR consent forms were signed by family members instead of the patients. Septic shock was the most common cause of medical ICU admission in both the early and late DNR patients (54.1% vs. 37.2%, $p = 0.131$). There was no difference in in-hospital mortality (83.8% vs. 81.4%, $p = 0.779$). Late DNR patients had longer ICU stays than early DNR patients (7.4 ± 8.1 vs. 19.7 ± 19.2 , $p < 0.001$).

Conclusions: Clinical outcomes are not influenced by the time of DNR designation in the medical ICU. The late DNR group is associated with a longer length of ICU stay and a tendency of withholding or withdrawing life-sustaining treatment. However, further studies are needed to clarify the guideline for end-of-life care in critically ill patients.

Key Words: resuscitation orders; intensive care units; cardiopulmonary resuscitation; advance directives.

Introduction

As critical care medicine advances, concerns about the ethics of resuscitating terminally ill patients has also increased. [1] When death is imminent, cardiopulmonary resuscitation or critical care interventions to maintain a patient's organ function can be regarded as futile by physicians or family members. However, end-of-life (EOL) care practices are complex and are influenced by multiple factors, including the

physicians' personal attitudes, family decisions, economic status, hospital policy, societal culture, and legislation.[2,3]

For these reasons, the decision for do-not-resuscitate (DNR) orders and the withholding or withdrawal of life-sustaining management remains both a challenge and an important issue in intensive care units (ICUs).

Received on March 14, 2016 Revised on May 24, 2016

Accepted on May 26, 2016

Correspondence to: Jin Won Huh, Department of Pulmonary and Critical Care Medicine, Asan Medical Center, University of Ulsan College of Medicine, 88 Olympic-ro 43-gil, Songpa-gu, Seoul 05505, Korea
Tel: +82-2-3010-3985, Fax: +82-2-3010-6970
E-mail: jwhuh@amc.seoul.kr

*No potential conflict of interest relevant to this article was reported.

© This is an Open Access article distributed under the terms of the Creative Commons Attribution Non-Commercial License (<http://creativecommons.org/licenses/by-nc/4.0/>) which permits unrestricted non-commercial use, distribution, and reproduction in any medium, provided the original work is properly cited.

Copyright © 2016 The Korean Society of Critical Care Medicine

It has been demonstrated that futile care in the ICU is associated with delays in appropriate management of other patients requiring critical care[4] and is related to substantial costs in the health care system.[5] Futile critical care also causes moral distress among nurses and could cause an ethical conflict between the ICU physicians and patient families.[6] Although EOL decisions in the ICU are important, a number of physicians hesitate to talk with families about DNR orders when the patient's condition is acutely deteriorating. Specifically, ICU physicians in Asia tend to allow life-sustaining treatments at the EOL more frequently than physicians in Western countries.[2,7,8] Many Asian physicians also decide to withhold life-sustaining treatments rather than withdraw therapy.[2,7]

There have been a few articles about the relationship between the time of DNR designation and mortalities.[9,10] Accordingly, we investigated whether the timing of DNR orders affects the clinical outcomes of the patients in the medical ICU.

Materials and Methods

1) Study design and population

We performed a retrospective review of the medical records of patients who were admitted to a medical ICU with DNR orders from June 1, 2014 to May 31, 2015. The study was conducted in the medical ICU (13-bed, adult patients) of an academic tertiary referral hospital in Korea. When the patients were admitted to the ICU for any reason, the data of the patients' implemented DNR orders were extracted. Patients who died within 24 hours of ICU admission were excluded.

This study was approved by the Institutional Review Board of Asan Medical Center (IRB NO: 2016-0027). Informed consent was waived due to the retrospective nature of the study.

2) Data collection

The following data for the patients admitted to the

medical ICU were retrieved from the electronic medical records: age, sex, time of DNR order, Acute Physiology and Chronic Health Evaluation (APACHE II) score, route of ICU admission (via an emergency department or general ward), number of ICU readmissions, hospital length of stay before ICU admission, degree of limits on care (DNR and withdrawal or withholding of life-sustaining treatment), relation of family that signed the DNR form (patient, spouse, son/daughter, brother/sister, parents), major causes of ICU admissions, comorbidity; and ICU management, including hemodialysis, extracorporeal membrane oxygenation, mechanical ventilation, tracheostomy, vasopressors, inotropes, transfusion, analgesics, sedatives, central line insertion, and arterial line insertion.

The primary outcome was in-hospital mortality at the time of discharge. Three-month mortality and six-month mortality were also investigated. Hospital stay and ICU stay were measured as secondary outcomes.

The APACHE II score was based on the worst value obtained during the first 24 hours after ICU admission. If a patient had more than one ICU admission episode, only the episode associated with DNR orders and outcomes was considered.

3) Statistical analysis

Statistical analysis was performed using IBM SPSS statistics for Windows, version 21.0 (IBM, Armonk, NY, USA). A p-value less than 0.05 was considered statistically significant. Continuous variables were expressed as the mean \pm standard deviation and categorical variables were expressed as the number (%). Patients were divided into an early DNR group and a late DNR group on the basis of 48 hours of ICU admission. The Student's *t*-test for continuous variables and chi-square test for categorical variables were performed to compare differences of characteristics and outcomes between the two groups.

Results

Among a total of 354 patients admitted to a medical

ICU, 80 (22.6%) patients with written DNR orders were enrolled. Two patients were excluded because they died within 24 hours. Finally, thirty-seven (46.3%) patients had DNR orders written within 48 hours of ICU admission, and 43 (53.7%) patients had DNR orders written more than 48 hours after ICU admission (Fig. 1).

Comparison of baseline characteristics of the patients with DNR orders in the medical ICU are summarized in Table 1. There were no significant differences between two groups with regard to age, gender, and comorbidities. At the time of ICU admission, there was no difference in APACHE II scores between the two groups (31.2 ± 8.1 vs. 30.5 ± 7.1 , $p = 0.694$). Septic shock was the most common cause of medical ICU admission in both groups (54.1% vs. 37.2%, $p = 0.131$). All DNR consents were signed by family members instead of the patients, most often by their sons and daughters. Large numbers of patients had hypertension and diabetes mellitus, and more than 40% of patients had solid tumors or hematologic malignancy.

Compared with early DNR patients, late DNR patients tended to withhold or withdraw life-sustaining management (18.9% vs. 37.2%, $p = 0.072$). Management in the ICU was not different between the groups, except for

tracheostomy (16.2% vs. 37.2%, $p = 0.036$) (Table 2).

There were no differences in in-hospital mortality (83.8% vs. 81.4%, $p = 0.779$), 3-month mortality (94.6% vs. 93.0%, $p = 1.000$), and 6-month mortality (94.6% vs. 95.3%, $p = 1.000$) between the two groups. The late DNR group stayed longer in the medical ICU than the early DNR patients (7.4 ± 8.1 vs. 19.7 ± 19.2 , $p < 0.001$) (Table 3).

Discussion

In this study, we identified that there was no difference in mortality between the early and late DNR groups. On the other hand, the late DNR group had a higher rate of tracheostomy and a tendency of withholding or withdrawing life-sustaining treatment. It has been demonstrated that DNR orders written later during hospitalization are different from those written shortly after admission.[9,11] The former is associated with a failure of full intensive care and a transition away from aggressive care, but the latter may be associated with a limit of critical care based on the pre-existing illness.[9,11]

Previously, a study showed that DNR orders written

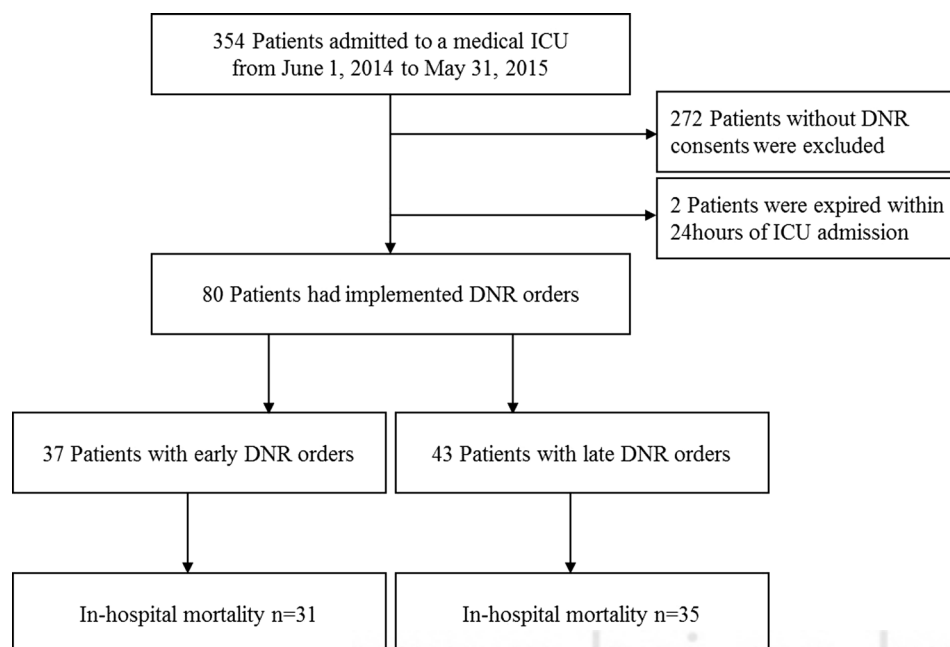


Fig. 1. Flowchart of enrolled patients in this study. early DNR orders: implemented within 48 h of ICU admission; late DNR orders: implemented more than 48 h after ICU admission; ICU: intensive care unit; DNR: do-not-resuscitate.

Table 1. Clinical characteristics according to the time of DNR orders

Variables	Early DNR group [*] (n = 37)	Late DNR group [†] (n = 43)	p-value
Age (y)	63.8 ± 13.1	65.1 ± 13.3	0.654
Male	26 (70.3)	30 (69.8)	0.961
APACHE II score	31.2 ± 8.1	30.5 ± 7.1	0.694
ICU admission via ED	17 (45.9)	22 (51.2)	0.642
Number of ICU readmissions	2 (5.4)	7 (16.3)	0.166
Hospital stay before ICU admission (d)	9.8 ± 18.1	8.4 ± 11.5	0.553
Comorbidities			
Hematologic disorder or solid tumor	17 (45.9)	21 (48.8)	0.796
Diabetes mellitus	13 (35.1)	10 (23.3)	0.242
Hypertension and cardiovascular disease	19 (51.4)	19 (44.2)	0.522
Chronic respiratory disease	4 (10.8)	8 (18.6)	0.285
Liver cirrhosis	5 (13.5)	4 (9.3)	0.726
Chronic kidney disease	2 (5.4)	4 (9.3)	0.681
Other [‡]	3 (8.1)	5 (11.6)	0.719
Major causes of ICU admission			
Septic shock or sepsis	20 (54.1)	16 (37.2)	0.131
ARDS or pneumonia	4 (10.8)	12 (27.9)	0.057
Interstitial lung disease	3 (8.1)	4 (9.3)	1.000
CPR survivor	4 (7.7)	1 (4.7)	0.176
Hepatic failure	3 (7.7)	1 (2.3)	0.331
Other [§]	3 (10.3)	9 (18.6)	0.109

Values are presented as mean ± standard deviation or n (%).

DNR: do-not-resuscitate; APACHE: Acute Physiology and Chronic Health Evaluation; ICU: intensive care unit; ED: emergency department; ARDS: acute respiratory distress syndrome; CPR: cardiopulmonary resuscitation.

^{*}Implemented DNR within 48 h of ICU admission.

[†]Implemented DNR more than 48 h after ICU admission.

[‡]Other comorbidities: Prior stroke, vasculitis, Systemic lupus erythematosus.

[§]Other causes of ICU admissions: Cardiogenic shock, hypovolemic shock, Stevens–Johnson syndrome, pulmonary thromboembolism, hemoptysis, pulmonary hypertension, intracranial hemorrhage, hyperosmolar hyperglycemic nonketotic syndrome.

within 24 hours in septic shock patients are associated more strongly with increased in-hospital mortality than in patients without early DNR orders (65.3% vs. 37.5%). [10] Another study showed that pneumonia patients with written DNR orders after 24 hours of hospitalization had higher in-hospital and 90-day mortalities than early DNR groups.[9] In our study, we divided enrolled patients into an early DNR group and a late DNR group based on 48 hours of ICU admission. Because patients who died in less than 24 hours were at high risk of death at admission, we excluded these patients regardless of

DNR order. Sufficient time for the decision to forgo life-sustaining treatment should be given to the patients and families, so we used 48 hours as the cutoff.[12]

As shown in our results, a major cause of medical ICU admission was septic shock, which requires full intensive care, especially in the initial phase. If a patient with septic shock no longer responds to initial resuscitation, poor outcomes are expected as a result of multiple organ system failure or severe neurologic injuries. Hence, the Surviving Sepsis Campaign emphasized the early recognition and early resuscitation. They also recommend

Table 2. Management according to the time of DNR orders

Variables	Early DNR group (n = 37)	Late DNR group (n = 43)	p-value
Withholding or withdrawing of life-sustaining treatment	7 (18.9)	16 (37.2)	0.072
ICU managements			
Hemodialysis	19 (51.4)	16 (37.2)	0.204
Extracorporeal membrane oxygenation	1 (2.7)	3 (7.0)	0.620
Mechanical ventilation	31 (83.8)	37 (86.0)	0.777
Tracheostomy	6 (16.2)	16 (37.2)	0.036
Vasopressors or inotropes	33 (89.2)	40 (93.0)	0.698
Transfusion	28 (75.7)	36 (83.7)	0.370
Analgesics or sedatives	33 (89.2)	40 (93.0)	0.698
Central line insertion	33 (84.6)	39 (90.7)	0.501
Arterial line insertion	35 (94.9)	41 (95.3)	1.000

Values are presented as mean \pm standard deviation or n (%).

DNR: do-not-resuscitate; ICU: intensive care unit.

Table 3. Clinical outcomes according to the time of DNR orders

Outcomes	Early DNR group (n=37)	Late DNR group (n=43)	p-value
Mortality			
In-hospital mortality	31 (83.8)	35 (81.4)	0.779
3-month mortality	35 (94.6)	40 (93.0)	1.000
6-month mortality	35 (94.6)	41 (95.3)	1.000
Hospital LOS (d)	22.0 \pm 21.5	33.6 \pm 30.7	0.057
ICU LOS (d)	7.4 \pm 8.1	19.7 \pm 19.2	< 0.001

Values are presented as mean \pm standard deviation or n (%).

DNR: do-not-resuscitate; LOS: length of stay; ICU: intensive care unit.

that goals of care and prognosis should be discussed with patients and families.[13] Therefore, we emphasize that timely discussion of treatment goals, including DNR decisions and advance directives after ICU admission, is necessary to promote communication and understanding between the ICU physicians and the patients' families. [13-15]

According to a recent report, 20% of ICU patients received futile or probably futile treatments, and as a result, delays in ICU admission from the emergency department or transfer from outside hospitals occurred.[4] The cost of futile critical care is also substantial. Hyunh et al.[5] reported that the cost of one day of treatment in the ICU that was perceived to be futile was more than \$4,000. During the study period, total costs of futile criti-

cal care were 3.5% of total hospital costs. It is presumed that these are the major reasons for the high frequency of withholding or withdrawing life support in the late DNR group. The critical care is societal and with limited resources. Hence, the delivery of futile care may be harmful to other patients and may be a waste of societal resources.[16] Therefore, ICU physicians should be aware of which patients will benefit from high-intensity critical care.

In fact, EOL care practices (including DNR, withholding or withdrawing of life-sustaining treatments and advance directives) in the ICU are difficult to decide for a physician or family alone. There are several factors that influence EOL decision-making, e.g., age, comorbidity, functional status, socioeconomic status, religion, legisla-

tion, and degree of family's involvement.[2] Compared to Western countries, ICU physicians in many Asian countries tend to be more aggressive with treatment. Results of the present study correspond with a previous study that suggested 20% of the late DNR group had implemented DNR orders on the eve of death. The reasons are that a number of ICU physicians were uncomfortable talking about EOL and legal risks in Asian countries.[2]

Four principles in ethical decision making are respect for autonomy (the patients' right to self-determination), beneficence (the physicians' duty to help patients whenever possible), non-maleficence (the obligation to avoid harm), and distributive justice (the fair allocation of medical resources).[17] In our data, an important finding is that all DNR consents were written by family members instead of the patients. A large number of critically ill patients are not able to make decisions for themselves because of their illness or sedated states.[18] Hence, the families make decisions as surrogates for ICU patients who cannot participate in EOL discussions.[12] They want to protect the patients from knowing their life-limiting illness[19] and may prolong dying even if opposed to the patient's own volition. Also, the traditional Asian values of filial piety and responsibility toward patients may contribute to this condition.[20] A reason for disregarding autonomy in this study was probably due to the culture of advance directives that was not widely settled yet in Korea.

In our data, approximately 30% of the medical ICU patients with DNR orders had advanced malignancies. However, advance directives were not discussed before ICU admission, even in patients with malignancies in terminal stages. Blackhall et al.[21] investigated that Korean Americans were less likely to inform elderly patients of the diagnosis or prognosis of terminal illness than European or African Americans. Compared to the United States, there were lower rates of advance directives completed in Asia.[20] Critically ill patients should be informed of their underlying diagnosis and prognosis before ICU admission. They should prepare their EOL and decide on the limitations of life-sustaining treatments

with ICU physicians and their families.

This study has several limitations, mostly stemming from its retrospective design. Because there were no specific guidelines for EOL practices in critically ill patients, most DNR orders or limitations of life-sustaining treatment were initiated by the ICU physicians' decision. Although the APACHE II score was not significantly different between two groups, more severe patients might be enrolled in the early DNR group. Furthermore, EOL practices could be altered based on the physician's region of practice, religion, or families' desire.[22,23] Second, because patients admitted to the medical ICU were enrolled, this study does not reflect results of surgical ICU patients. Third, this study was conducted in a single-center, tertiary referral hospital, and severity of illness or practices may be different from other centers' data. Therefore, a prospective cohort study involving all types of ICUs in multiple centers is necessary.

In conclusion, clinical outcomes are not influenced by the time of DNR designation in the medical ICU. The late DNR group is associated with a longer length of ICU stay and a tendency of withholding or withdrawing life-sustaining treatment. However, further studies are needed to clarify the guideline for end-of-life care in critically ill patients.

ORCID

Younsuck Koh <http://orcid.org/0000-0001-5066-2027>

Jin Won Huh <http://orcid.org/0000-0002-3449-0461>

References

- 1) Stevens MB: Withholding resuscitation. *Am Fam Physician* 1986; 33: 207-12.
- 2) Phua J, Joynt GM, Nishimura M, Deng Y, Myatra SN, Chan YH, et al: Withholding and withdrawal of life-sustaining treatments in intensive care units in Asia. *JAMA Intern Med* 2015; 175: 363-71.

- 3) Dzung E, Colaianni A, Roland M, Chander G, Smith TJ, Kelly MP, et al: Influence of institutional culture and policies on do-not-resuscitate decision making at the end of life. *JAMA Intern Med* 2015; 175: 812-9.
- 4) Huynh TN, Klerup EC, Raj PP, Wenger NS: The opportunity cost of futile treatment in the intensive care unit. *Crit Care Med* 2014; 42: 1977-82.
- 5) Huynh TN, Klerup EC, Wiley JF, Savitsky TD, Guse D, Garber BJ, et al: The frequency and cost of treatment perceived to be futile in critical care. *JAMA Intern Med* 2013; 173: 1887-94.
- 6) Ferrell BR: Understanding the moral distress of nurses witnessing medically futile care. *Oncol Nurs Forum* 2006; 33: 922-30.
- 7) Weng L, Joynt GM, Lee A, Du B, Leung P, Peng J, et al: Attitudes towards ethical problems in critical care medicine: the Chinese perspective. *Intensive Care Med* 2011; 37: 655-64.
- 8) Buckley TA, Joynt GM, Tan PY, Cheng CA, Yap FH: Limitation of life support: frequency and practice in a Hong Kong intensive care unit. *Crit Care Med* 2004; 32: 415-20.
- 9) Marrie TJ, Fine MJ, Kapoor WN, Coley CM, Singer DE, Obrosky DS: Community-acquired pneumonia and do not resuscitate orders. *J Am Geriatr Soc* 2002; 50: 290-9.
- 10) Bradford MA, Lindenauer PK, Wiener RS, Walkey AJ: Do-not-resuscitate status and observational comparative effectiveness research in patients with septic shock. *Crit Care Med* 2014; 42: 2042-7.
- 11) Teres D: Trends from the United States with end of life decisions in the intensive care unit. *Intensive Care Med* 1993; 19: 316-22.
- 12) Truog RD, Campbell ML, Curtis JR, Haas CE, Luce JM, Rubenfeld GD, et al: Recommendations for end-of-life care in the intensive care unit: a consensus statement by the American College [corrected] of Critical Care Medicine. *Crit Care Med* 2008; 36: 953-63.
- 13) Dellinger RP, Levy MM, Rhodes A, Annane D, Gerlach H, Opal SM, et al: Surviving sepsis campaign: international guidelines for management of severe sepsis and septic shock: 2012. *Crit Care Med* 2013; 41: 580-637.
- 14) Detering KM, Hancock AD, Reade MC, Silvester W: The impact of advance care planning on end of life care in elderly patients: randomised controlled trial. *BMJ* 2010; 340: c1345.
- 15) Norton SA, Hogan LA, Holloway RG, Temkin-Greener H, Buckley MJ, Quill TE: Proactive palliative care in the medical intensive care unit: effects on length of stay for selected high-risk patients. *Crit Care Med* 2007; 35: 1530-5.
- 16) Niederman MS, Berger JT: The delivery of futile care is harmful to other patients. *Crit Care Med* 2010; 38: S518-22.
- 17) Beauchamp T, Childress J: *Principles of Biomedical Ethics*. 7th ed. Oxford, Oxford University Press. 2013.
- 18) Luce JM: Is the concept of informed consent applicable to clinical research involving critically ill patients? *Crit Care Med* 2003; 31: S153-60.
- 19) The AM, Hak T, Koeter G, van Der Wal G: Collusion in doctor-patient communication about imminent death: an ethnographic study. *BMJ* 2000; 321: 1376-81.
- 20) Searight HR, Gafford J: Cultural diversity at the end of life: issues and guidelines for family physicians. *Am Fam Physician* 2005; 71: 515-22.
- 21) Blackhall LJ, Murphy ST, Frank G, Michel V, Azen S: Ethnicity and attitudes toward patient autonomy. *JAMA* 1995; 274: 820-5.
- 22) Sprung CL, Cohen SL, Sjøkvist P, Baras M, Bulow HH, Hovilehto S, et al: End-of-life practices in European intensive care units: the Ethicus Study. *JAMA* 2003; 290: 790-7.
- 23) Thompson BT, Cox PN, Antonelli M, Carlet JM, Cassell J, Hill NS, et al: Challenges in end-of-life care in the ICU: statement of the 5th International Consensus Conference in Critical Care: Brussels, Belgium, April 2003: executive summary. *Crit Care Med* 2004; 32: 1781-4.