



## Oral Anticoagulation Therapy in Atrial Fibrillation Patients with Advanced Chronic Kidney Disease: CODE-AF Registry

Hanjin Park<sup>1\*</sup>, Hee Tae Yu<sup>1\*</sup>, Tae-Hoon Kim<sup>1</sup>, Junbeom Park<sup>2</sup>, Jin-Kyu Park<sup>3</sup>, Ki-Woon Kang<sup>4</sup>, Jaemin Shim<sup>5</sup>, Jin-Bae Kim<sup>6</sup>, Jun Kim<sup>7</sup>, Eue-Keun Choi<sup>8</sup>, Hyung Wook Park<sup>9</sup>, Young Soo Lee<sup>10</sup>, and Boyoung Joung<sup>1</sup>

<sup>1</sup>Division of Cardiology, Department of Internal Medicine, Yonsei University College of Medicine, Seoul;

<sup>2</sup>Department of Cardiology, School of Medicine, Ewha Womans University, Seoul;

<sup>3</sup>Department of Cardiology, Hanyang University Seoul Hospital, Seoul;

<sup>4</sup>Division of Cardiology, Eulji University Hospital, Daejeon;

<sup>5</sup>Division of Cardiology, Department of Internal Medicine, Korea University Medical Center, Seoul;

<sup>6</sup>Division of Cardiology, Department of Internal Medicine, Kyung Hee University Hospital, Seoul;

<sup>7</sup>Heart Institute, Asan Medical Center, University of Ulsan College of Medicine, Seoul;

<sup>8</sup>Department of Internal Medicine, Seoul National University Hospital, Seoul;

<sup>9</sup>Department of Cardiology, Chonnam National University Hospital, Chonnam National University School of Medicine, Gwangju;

<sup>10</sup>Division of Cardiology, Department of Internal Medicine, Daegu Catholic University Medical Center, Daegu, Korea.

**Purpose:** Advanced chronic kidney disease (CKD), including end-stage renal disease (ESRD) on dialysis, increases thromboembolic risk among patients with atrial fibrillation (AF). This study examined the comparative safety and efficacy of direct-acting oral anticoagulant (DOAC) compared to warfarin or no oral anticoagulant (OAC) in AF patients with advanced CKD or ESRD on dialysis.

**Materials and Methods:** Using data from the COmparison study of Drugs for symptom control and complication prEvention of AF (CODE-AF) registry, 260 non-valvular AF patients with advanced CKD (defined as estimated glomerular filtration rate <30 mL/min per 1.73/m<sup>2</sup>) or ESRD on dialysis were enrolled from June 2016 to July 2020. The study population was categorized into DOAC, warfarin, and no OAC groups; and differences in major or clinically relevant non-major (CRNM) bleeding, stroke/systemic embolism (SE), myocardial infarction/critical limb ischemia (CLI), and death were assessed.

**Results:** During a median 24 months of follow-up, major or CRNM bleeding risk was significantly reduced in the DOAC group compared to the warfarin group [hazard ratio (HR) 0.11, 95% confidence interval (CI) 0.01 to 0.93,  $p=0.043$ ]. In addition, the risk of composite adverse clinical outcomes (major or CRNM bleeding, stroke/SE, myocardial infarction/CLI, and death) was significantly reduced in the DOAC group compared to the no OAC group (HR 0.16, 95% CI 0.03 to 0.91,  $p=0.039$ ).

**Conclusion:** Among AF patients with advanced CKD or ESRD on dialysis, DOAC was associated with a lower risk of major or CRNM bleeding compared to warfarin and a lower risk of composite adverse clinical outcomes compared to no OAC.

ClinicalTrials.gov (NCT02786095)

**Key Words:** Anticoagulant, atrial fibrillation, dialysis, stroke, bleeding

**Received:** October 13, 2022 **Revised:** November 28, 2022 **Accepted:** November 28, 2022 **Published online:** December 16, 2022

**Corresponding author:** Boyoung Joung, MD, PhD, Division of Cardiology, Department of Internal Medicine, Yonsei University College of Medicine, 50-1 Yonsei-ro, Seodaemun-gu, Seoul 03722, Korea.

E-mail: cby6908@yuhs.ac

\*Hanjin Park and Hee Tae Yu contributed equally to this work.

•Dr. Boyoung Joung has served as a speaker for Bayer, BMS/Pfizer, Medtronic and Daiichi-Sankyo, and has received research funds from Medtronic and Abbott. All other authors declare no competing interests. No fees were received personally.

© Copyright: Yonsei University College of Medicine 2023

This is an Open Access article distributed under the terms of the Creative Commons Attribution Non-Commercial License (<https://creativecommons.org/licenses/by-nc/4.0>) which permits unrestricted non-commercial use, distribution, and reproduction in any medium, provided the original work is properly cited.

## INTRODUCTION

Atrial fibrillation (AF) is associated with a five-fold increase in the risk of stroke, and chronic kidney disease (CKD) increases the risk by 3.7 times compared to the general population.<sup>1,2</sup> Patients with CKD have a 10-fold increased prevalence of AF, with which kidney function deteriorates over time.<sup>3,4</sup> AF and CKD are closely interrelated conditions that are additively associated with an increased risk of stroke, and this is particularly true in those with severe renal impairment.<sup>5,6</sup> Although warfarin has been recommended for stroke prevention in AF patients with advanced CKD, antithrombotic therapy in these patients is complex. Increased bleeding risk due to uremia-induced platelet dysfunction complicates clinical decision-making,<sup>7</sup> and several studies have questioned its overall effectiveness in stroke prevention.<sup>8,9</sup> Recently, direct-acting oral anticoagulants (DOACs) have changed the landscape of antithrombotic therapy in AF patients with normal or near-normal renal function. Compared to warfarin, DOAC has shown non-inferior efficacy in stroke prevention and significant reduction in major bleeding.<sup>10-13</sup> However, DOAC relies on some degree of renal excretion, and advanced CKD or ESRD on dialysis patients have largely been excluded from clinical trials.<sup>10-13</sup> The objective of this study was to assess the comparable safety and effectiveness of DOAC compared to warfarin or no oral anticoagulant (OAC) among AF patients with advanced CKD or ESRD on dialysis.

## MATERIALS AND METHODS

### Data source and study population

The Comparison study of Drugs for symptom control and complication prEvention of Atrial Fibrillation (CODE-AF) registry is an ongoing prospective observational registry at 18 tertiary hospitals representing all geographical regions of South Korea. Detailed descriptions are available in previous studies.<sup>14</sup> In brief, the aim of this registry is to assess the clinical epidemiology of patients with AF and to determine the diagnostic and therapeutic processes applied in these patients, along with their clinical outcomes. All patients provided informed consent. The registry was designed by the Korea Heart Rhythm Society, approved by the ethics committee of each center (4-2016-0105).

A total of 11527 AF patients were enrolled in the CODE-AF registry from June 2016 to July 2020. Eligible patients from the registry were >18 years old with non-valvular AF, and did not have transient AF with reversible causes or need for chronic anticoagulation to treat conditions other than AF, such as valve prosthesis, deep venous thrombosis, or pulmonary thromboembolism. After enrollment, each patient was scheduled to be followed up every 6 months, either by outpatient clinic or telephone contact. Each patient was assessed at enrollment for demographics, medical history, and laboratory measures. In our study, advanced CKD was defined as previous diagnosis of

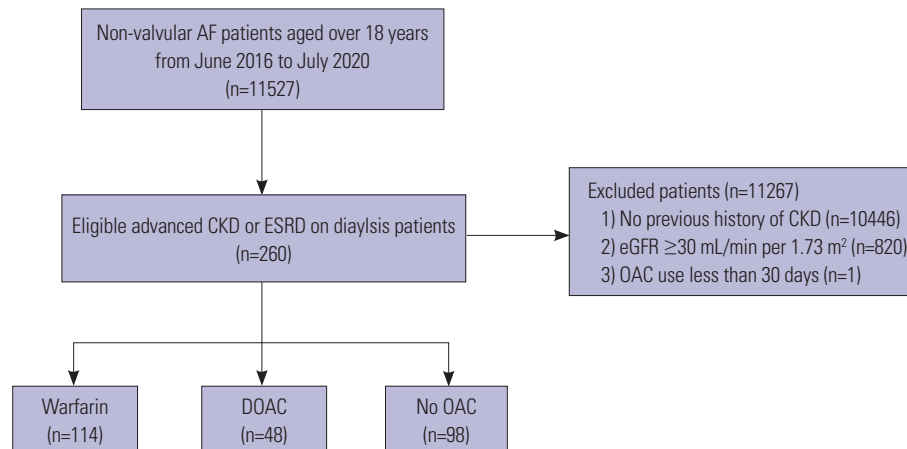
CKD and baseline estimated glomerular filtration rate (eGFR) <30 mL/min per 1.73 m<sup>2</sup>, as calculated by the MDRD equation. Advanced CKD was further classified as CKD stage 4 (eGFR ≥15 to <30 mL/min per 1.73 m<sup>2</sup>), stage 5 (eGFR <15 mL/min per 1.73 m<sup>2</sup>), or ESRD on dialysis. Of 11527 patients in the registry, we excluded those without previous diagnosis of CKD (n=10446), baseline eGFR (MDRD) ≥30 mL/min per 1.73 m<sup>2</sup> (n=820), or OAC use for less than 30 days after the start of follow-up (n=1). Finally, a total of 260 patients were included in this study, and they were categorized into warfarin (n=114), DOAC (n=48), and no OAC (n=98) groups. Since DOAC use in patients with severe renal impairment has not been fully established, careful explanation about its pros and cons was conducted, and consent was obtained from the patient and their caregivers.

### Outcome definition and follow-up

The primary outcome was defined as a composite of major or clinically relevant non-major (CRNM) bleeding, stroke/systemic embolism (SE), myocardial infarction/critical limb ischemia (CLI), and all-cause death. The definition of major bleeding was based on the International Society on Thrombosis and Hemostasis criteria for major bleeding or CRNM bleeding. Stroke/SE included cerebrovascular accident, transient ischemic attack, and acute loss of blood flow to a peripheral artery confirmed by magnetic resonance imaging or computed tomography. Myocardial infarction was defined based on the clinical evidence of myocardial ischemia with myocardial necrosis on laboratory findings. CLI was defined as the presence of ischemic resting pain, ulcer, or gangrene with lower extremity peripheral artery disease. Patients were followed until the end of the study period (July 2020), or until death or censoring. Patients were censored for any of the following reasons: discontinuing OAC for any reason, switching from DOAC to warfarin or vice versa, and kidney function recovery or dialysis discontinuation due to kidney transplantation.

### Statistical analysis

We summarized baseline characteristics as counts and percentages for categorical variables, and medians with 25th to 75th percentiles for continuous variables. Categorical variables were compared using the  $\chi^2$  test, and continuous variables were compared using the Student's t-test. Event rate was presented as number of events per 100 person-years. Survival free of adverse events in each group was presented using the Kaplan-Meier method, and compared by the log-rank test. For each adverse clinical outcome, we calculated the hazard ratios (HRs) and 95% confidence intervals (CIs) from Cox proportional hazards regression models to show the association between the warfarin, DOAC, and no OAC groups. HRs were adjusted by components of the baseline characteristics, and *p*-values <0.05 were considered statistically significant. All statistical analyses were performed using the SPSS software (The Statistical Package for Social Sciences, version 25.0; IBM Corp., Armonk, NY, USA).



**Fig. 1.** Flow chart of the study population. AF, atrial fibrillation; CKD, chronic kidney disease; DOAC, direct-acting oral anticoagulant; ESRD, end-stage renal disease; eGFR, estimated glomerular filtration rate; OAC, oral anticoagulant.

**Table 1.** Baseline Characteristics of the Study Population

| Characteristics                        | Warfarin (n=114) | DOAC (n=48)   | No OAC (n=98) | p value |
|--|------------------|---------------|---------------|---------|
| Age, yr                                | 70 (64–76)       | 77 (70–81)    | 65 (58–74)    | <0.001  |
| Sex, female                            | 50 (43.9)        | 24 (50.0)     | 38 (38.8)     | 0.432   |
| Paroxysmal AF                          | 73 (64.0)        | 32 (66.7)     | 75 (76.5)     | 0.137   |
| Systolic BP, mm Hg                     | 131 (120–143)    | 121 (109–126) | 132 (119–143) | 0.431   |
| Diastolic BP, mm Hg                    | 75 (68–82)       | 67 (60–69)    | 76 (68–83)    | 0.741   |
| CHA <sub>2</sub> DS <sub>2</sub> -VASc | 3 (2–5)          | 5 (3–6)       | 3 (2–4)       | <0.001  |
| 1–2                                    | 32 (28.1)        | 6 (12.5)      | 44 (44.9)     |         |
| 3–5                                    | 68 (59.6)        | 26 (54.2)     | 51 (52.0)     |         |
| ≥6                                     | 14 (12.3)        | 16 (33.3)     | 3 (3.1)       |         |
| HAS-BLED                               | 3 (2–5)          | 5 (3–6)       | 3 (2–4)       | 0.028   |
| 0–2                                    | 24 (21.1)        | 19 (39.6)     | 36 (36.7)     |         |
| 3–4                                    | 79 (69.3)        | 28 (58.3)     | 52 (53.1)     |         |
| ≥5                                     | 11 (9.6)         | 1 (2.1)       | 10 (10.2)     |         |
| Chronic conditions                     |                  |               |               |         |
| Hypertension                           | 99 (86.8)        | 43 (89.6)     | 81 (82.7)     | 0.488   |
| Diabetes mellitus                      | 59 (51.8)        | 28 (58.3)     | 39 (39.8)     | 0.074   |
| Dyslipidemia                           | 38 (33.3)        | 22 (45.8)     | 36 (36.7)     | 0.328   |
| Myocardial infarction                  | 8 (7.0)          | 3 (6.2)       | 4 (4.1)       | 0.655   |
| Heart failure                          | 12 (10.5)        | 7 (14.6)      | 11 (11.2)     | 0.759   |
| Stroke                                 | 20 (17.5)        | 17 (35.4)     | 9 (9.2)       | 0.001   |
| PAOD                                   | 12 (10.5)        | 3 (6.2)       | 15 (15.3)     | 0.254   |
| CKD, stage 4                           | 33 (28.9)        | 27 (57.2)     | 19 (19.4)     | <0.001  |
| Medications                            |                  |               |               |         |
| RAAS inhibitor                         | 40 (35.1)        | 29 (60.4)     | 26 (26.5)     | <0.001  |
| Beta-blocker                           | 50 (43.9)        | 28 (58.3)     | 42 (42.9)     | 0.176   |
| Statin                                 | 36 (31.6)        | 22 (45.8)     | 33 (33.7)     | 0.214   |
| Anti-platelet drug                     | 13 (11.4)        | 11 (22.9)     | 54 (55.1)     | <0.001  |
| Anti-arrhythmic drugs                  | 46 (40.4)        | 17 (35.4)     | 28 (28.6)     | 0.206   |
| Dabigatran                             |                  | 5 (10.4)      |               |         |
| Rivaroxaban                            |                  | 14 (29.2)     |               |         |
| Apixaban                               |                  | 25 (52.1)     |               |         |
| Edoxaban                               |                  | 4 (8.3)       |               |         |

AF, atrial fibrillation; BP, blood pressure; CKD, chronic kidney disease; DOAC, direct-acting oral anticoagulant; OAC, oral anticoagulant; PAOD, peripheral artery occlusive disease; RAAS, renin-angiotensin-aldosterone-system. Values are presented as the median (1st quartile, 3rd quartile) or n (%).

## RESULTS

### Study population

The flow chart and baseline characteristics of the study population are presented in Fig. 1 and Table 1, respectively. Among 260 AF patients with advanced CKD, 114 (43.8%) were in the warfarin group, 48 (18.5%) in the DOAC group, and 98 (37.7%) in the no OAC group. Compared with the warfarin group, the DOAC group had higher CHA<sub>2</sub>DS<sub>2</sub>-VASc and HAS-BLED scores, and was more likely to have a history of stroke and CKD stage 4. Meanwhile, compared to the no OAC group, the DOAC group had a higher CHA<sub>2</sub>DS<sub>2</sub>-VASc score, and was more likely to have stroke and CKD stage 4 but less likely to have paroxysmal AF or use anti-platelet drugs.

Among the 48 DOAC users, 25 (52.1%) were on apixaban, 14 (29.2%) on rivaroxaban, 5 (10.4%) on dabigatran, and 4 (8.3%) on edoxaban. Among the 25 apixaban users, 22 were prescribed a 2.5-mg twice daily dose and three a 1.25-mg twice daily dose. Among the 14 rivaroxaban users, 12 were prescribed a 15-mg once daily dose and two a 10-mg once daily dose. All dabigatran and edoxaban users were prescribed a 110-mg twice daily dose and a 30-mg once daily dose, respectively. Baseline characteristics of the DOAC group by the specific types of DOAC are presented in Supplementary Table 1 (only online).

### Clinical outcomes

The event numbers and ratios of adverse clinical outcomes for the three groups, including specific type of DOAC, are presented in Supplementary Table 2 (only online).

During a median 24 months (interquartile range, 12 to 36 months) of follow-up, the event rates of composite adverse clinical outcomes were 5.5 and 10.5 per 100 person-years in the DOAC and warfarin groups, respectively. No statistically significant difference in the risk of composite adverse clinical outcomes between DOAC and warfarin groups was found (HR 0.54, 95% CI 0.18 to 1.65,  $p=0.278$ ). In contrast, the event rates of major or CRNM bleeding were 1.8 and 7.9 per 100 person-years for the

DOAC and warfarin groups, respectively. Compared to the warfarin group, the DOAC group had a significantly reduced risk of major or CRNM bleeding (HR 0.11, 95% CI 0.01 to 0.93,  $p=0.043$ ) (Fig. 2). Although the event rates of stroke/SE, all-cause death, and myocardial infarction/CLI showed similar trends, there were no statistically significant differences in the risks of any of these adverse clinical outcomes between the two groups (Fig. 2).

The event rates of the composite adverse clinical outcome were 5.5 and 8.4 per 100 person-years in the DOAC group and the no OAC group, respectively. Compared to the no OAC group, the DOAC group had a significantly reduced risk of com-

posite adverse clinical outcomes (HR 0.16, 95% CI 0.03 to 0.91,  $p=0.039$ ). In addition, major or CRNM bleeding risk between the two groups was not significantly different (HR 0.28, 95% CI 0.05 to 1.69,  $p=0.165$ ). There were no significant differences in any of other adverse clinical outcomes (stroke/SE, all-cause death, and myocardial infarction/CLI) between the two groups (Fig. 3). In addition, there was no significant difference in composite and each of the adverse clinical outcomes in the no OAC group compared to the warfarin group (Supplementary Fig. 1, only online).

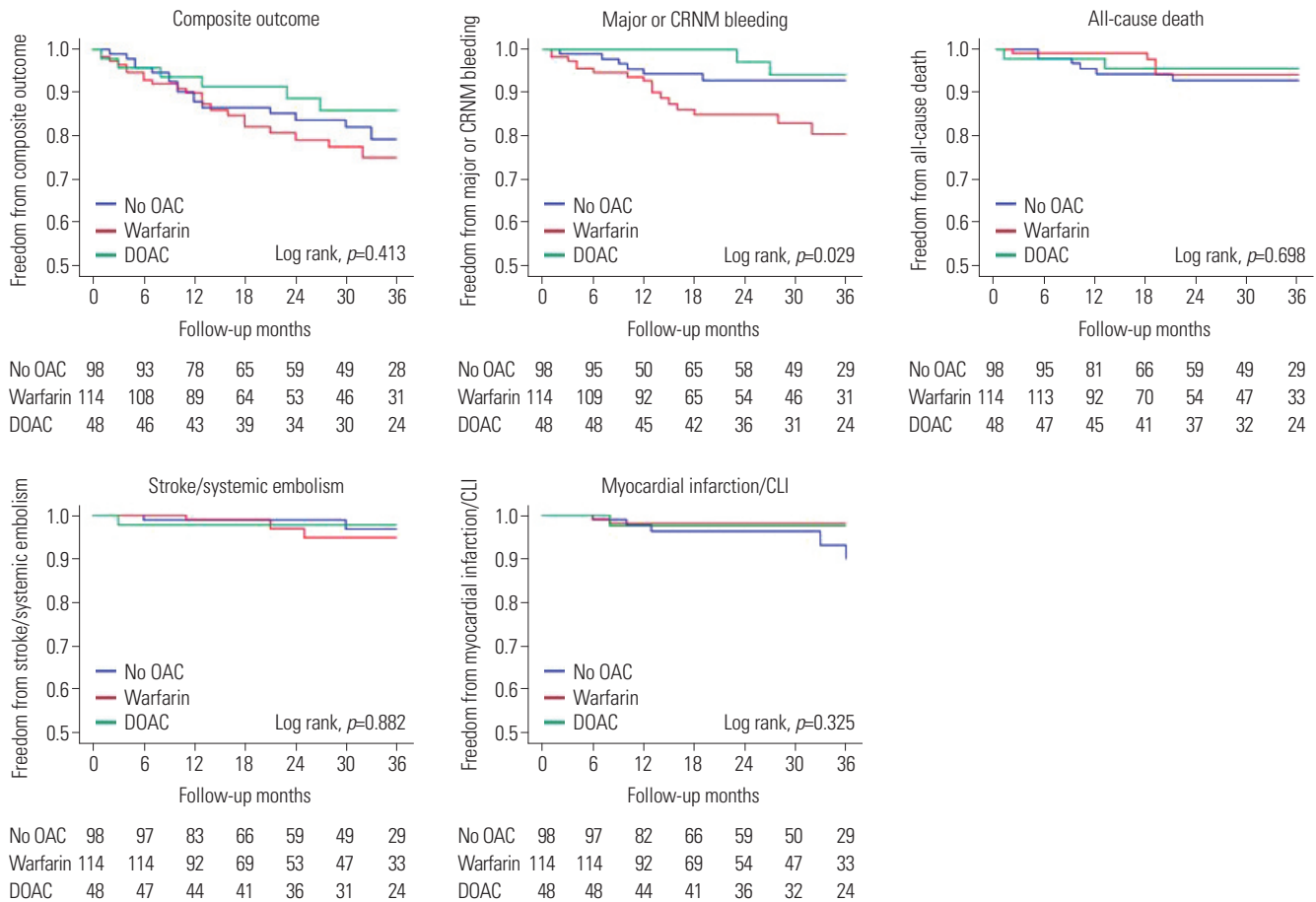
The survival curve of composite and each of the adverse clinical outcomes is presented as Kaplan-Meier curve in Fig. 4.

|                                   | Event | Event rate | Unadjusted HR (95% CI) | Adjusted HR (95% CI) | P-value |
|-----------------------------------|-------|------------|------------------------|----------------------|---------|
| <b>Major or CRNM bleeding</b>     |       |            |                        |                      |         |
| Warfarin                          | 16    | 7.9        | Reference              | Reference            | 0.043   |
| DOAC                              | 2     | 1.8        | 0.23 (0.05-0.98)       | 0.11 (0.01-0.93)     |         |
| <b>Stroke/systemic embolism</b>   |       |            |                        |                      |         |
| Warfarin                          | 3     | 1.5        | Reference              | Reference            | 0.468   |
| DOAC                              | 1     | 0.9        | 0.61 (0.06-5.91)       | 0.33 (0.02-6.60)     |         |
| <b>Death</b>                      |       |            |                        |                      |         |
| Warfarin                          | 4     | 1.9        | Reference              | Reference            | 0.935   |
| DOAC                              | 2     | 1.8        | 0.91 (0.17-4.99)       | 1.12 (0.08-1.67)     |         |
| <b>Myocardial infarction/CLI</b>  |       |            |                        |                      |         |
| Warfarin                          | 2     | 1.1        | reference              | Reference            | 0.908   |
| DOAC                              | 1     | 1.0        | 1.08 (0.10-12.0)       | 1.17 (0.09-15.7)     |         |
| <b>Composite adverse outcomes</b> |       |            |                        |                      |         |
| Warfarin                          | 21    | 10.5       | Reference              | Reference            | 0.278   |
| DOAC                              | 6     | 5.5        | 0.54 (0.22-1.35)       | 0.54 (0.18-1.65)     |         |

**Fig. 2.** Event rates and HRs of adverse clinical outcomes for DOAC versus warfarin in AF patients with advanced CKD or ESRD on dialysis. Event rate is calculated for 100 person-years. AF, atrial fibrillation; CI, confidence interval; CKD, chronic kidney disease; CLI, critical limb ischemia; CRNM, clinically relevant non-major; DOAC, direct-acting oral anticoagulant; ESRD, end-stage renal disease; HR, hazard ratio.

|                                   | Event | Event Rate | Unadjusted HR (95% CI) | Adjusted HR (95% CI) | P-value |
|-----------------------------------|-------|------------|------------------------|----------------------|---------|
| <b>Major or CRNM bleeding</b>     |       |            |                        |                      |         |
| No OAC                            | 6     | 3.1        | Reference              | Reference            | 0.165   |
| DOAC                              | 2     | 1.8        | 0.58 (0.12-2.90)       | 0.28 (0.05-1.69)     |         |
| <b>Stroke/systemic embolism</b>   |       |            |                        |                      |         |
| No OAC                            | 2     | 1.0        | Reference              | Reference            | 0.501   |
| DOAC                              | 1     | 0.9        | 0.94 (0.08-10.4)       | 0.42 (0.03-5.27)     |         |
| <b>Death</b>                      |       |            |                        |                      |         |
| No OAC                            | 6     | 3.1        | Reference              | Reference            | 0.227   |
| DOAC                              | 2     | 1.8        | 0.62 (0.12-3.06)       | 0.33 (0.06-1.98)     |         |
| <b>Myocardial infarction/CLI</b>  |       |            |                        |                      |         |
| No OAC                            | 5     | 2.6        | reference              | Reference            | 0.130   |
| DOAC                              | 1     | 0.9        | 0.32 (0.04-2.76)       | 0.17 (0.02-1.69)     |         |
| <b>Composite adverse outcomes</b> |       |            |                        |                      |         |
| No OAC                            | 16    | 8.4        | Reference              | Reference            | 0.039   |
| DOAC                              | 6     | 5.5        | 0.68 (0.27-1.74)       | 0.16 (0.03-0.91)     |         |

**Fig. 3.** Event rates and HRs of adverse clinical outcomes for DOAC versus no OAC in AF patients with advanced CKD or ESRD on dialysis. Event rate is calculated for 100 person-years. AF, atrial fibrillation; CI, confidence interval; CKD, chronic kidney disease; CLI, critical limb ischemia; CRNM, clinically relevant non-major; DOAC, direct-acting oral anticoagulant; ESRD, end-stage renal disease; HR, hazard ratio; OAC, oral anticoagulant.



**Fig. 4.** Survival curves for adverse clinical outcomes in the DOAC, warfarin, and no OAC groups in AF patients with advanced CKD or ESRD on dialysis. AF, atrial fibrillation; CKD, chronic kidney disease; CLI, critical limb ischemia; CRNM, clinically relevant non-major; DOAC, direct-acting oral anticoagulant; ESRD, end-stage renal disease; OAC, oral anticoagulant.

Significant differences in major or CRNM bleeding among DOAC, warfarin, and no OAC groups were identified (log rank,  $p=0.029$ ).

**Subgroup analysis**

Since dabigatran is not recommended in patients with advanced CKD (creatinine clearance of  $<30$  mL/min) or ESRD on dialysis according to the U.S. and European guidelines,<sup>3,15</sup> we conducted a subgroup analysis after excluding those prescribed with dabigatran in the DOAC group. The results were similar to the main analysis (Supplementary Figs. 2 and 3, only online).

**DISCUSSION**

In this prospective observational study of 260 non-valvular AF patients with advanced CKD or ESRD on dialysis, DOAC was associated with reduced major or CRNM bleeding compared to warfarin, and with reduced composite adverse clinical outcomes compared to no OAC.

Given the non-inferior efficacy in stroke prevention and major bleeding risk reduction compared to warfarin, DOAC has

become the mainstay of stroke prevention in AF patients with normal or near-normal renal function.<sup>10-13</sup> Despite the clinical benefits of DOACs compared to warfarin, advanced CKD patients have largely been excluded from major clinical trials, since DOACs produce varying degrees of renal excretion. Dabigatran is 80% renally excreted, while edoxaban is 50%, rivaroxaban is 35%, and apixaban is 27%.<sup>16-18</sup> Due to concerns regarding increased plasma concentration, as well as the lack of clinical trials in this population, the U.S. and European guidelines make tentative recommendations for the use of DOACs in patients with severe renal impairment.<sup>3,15</sup>

However, pharmacokinetic data for apixaban in patients with advanced CKD or ESRD on dialysis have suggested that apixaban dosing in these patients had limited impact on apixaban plasma concentration.<sup>18</sup> Thus, there are reasons to anticipate apixaban use in patients with severe renal impairment, and some studies have shown favorable outcomes with apixaban in AF patients with advanced CKD compared to warfarin.<sup>19,20</sup> Siontis, et al.<sup>19</sup> showed that apixaban 2.5-mg twice a day resulted in decreased major bleeding risk compared to warfarin, and apixaban 5-mg twice a day resulted in not only decreased major bleeding risk, but also decreased risk of stroke and death

in patients on chronic dialysis. On the other hand, another study by Chan, et al.<sup>16</sup> showed that dabigatran and rivaroxaban in chronic dialysis patients were associated with increased major bleeding and death compared to warfarin, despite dose reductions. In our study, among the 48 DOAC users, 25 (52.1%) were on apixaban, 14 (29.2%) were on rivaroxaban, 5 (10.4%) were on dabigatran, and 4 (8.3%) were on edoxaban. All incidences of major or CRNM bleeding occurred in those who were prescribed rivaroxaban and dabigatran (Supplementary Table 2, only online), and reductions in major or CRNM bleeding were predominant in apixaban or edoxaban users, which was in line with the findings of previous studies.<sup>19-23</sup> There were too few stroke/SE events in either the DOAC group or the warfarin group in our study to draw any meaningful associations between the two.

Evidence that OAC therapy leads to clinical benefits in AF patients with advanced CKD or ESRD on dialysis is scarce. Although warfarin has been conventionally recommended for antithrombotic therapy in these populations, no established conclusion about its overall effectiveness in stroke prevention has been suggested.<sup>1,8,9,24</sup> Bonde, et al.<sup>24</sup> showed that advanced CKD patients on warfarin had a reduced risk of composite stroke/fatal bleeding as well as death; whereas Shah, et al.<sup>8</sup> found no benefit of warfarin in stroke prevention, but only an increased bleeding risk compared to no OAC. Uremia-induced platelet dysfunction and coagulopathy, as well as vascular calcification associated with warfarin use, have been suggested as a possible explanation for the differing results;<sup>7,25</sup> and we also found no evidence of benefit from warfarin use compared to no OAC in patients with advanced CKD or ESRD on dialysis.

In the current study, DOAC was associated with reduced composite adverse clinical outcomes without increased risk of major or CRNM bleeding compared to no OAC. Advanced CKD patients have accelerated atherosclerosis and increased risk of cardiovascular disease,<sup>26,27</sup> and more than 50% of CKD stage 5 patients at initiation of renal replacement therapy have angiographically significant coronary artery stenosis. One possible explanation of our result is that the benefit of the antithrombotic property, translated into secondary cardiovascular protection under OAC treatment,<sup>28,29</sup> was offset by the increased bleeding risk under warfarin use but remained under DOAC use. The benefit of DOAC in secondary prevention of stable cardiovascular disease patients was suggested in the COMPASS trial.<sup>28</sup> In this trial, composite myocardial infarction, stroke, and cardiovascular death were significantly reduced in the rivaroxaban 2.5-mg twice daily plus aspirin group, and there was a non-significant trend toward reduced risk in the rivaroxaban 5-mg twice daily group compared to the aspirin only group. Although the trial did not enroll patients with severe renal impairment, advanced CKD patients in our study might have benefitted from DOAC use, considering the increased risk of cardiovascular disease in these patients.

Our study had several limitations. First, although we found

some clinical benefit of DOAC compared to warfarin or no OAC, our results require careful interpretation due to the small sample size and few number of adverse clinical events. Second, significantly different baseline characteristics between the DOAC, warfarin, and no OAC groups complicates the interpretation of our results. For example, DOAC users had better residual renal function compared to the warfarin group or no OAC group. This could have resulted in favorable cardiovascular outcomes and translated into reduced composite adverse clinical outcomes in the DOAC group. In addition, there were more users of aspirin, which is the first-line therapy in cardiovascular disease, in the no OAC group than in the DOAC or warfarin groups, and this might have translated into a smaller number of composite adverse clinical outcomes in the no OAC group. Third, the DOACs (dabigatran, rivaroxaban, apixaban, and edoxaban) were not separately analyzed, since there were too few events in each of the subgroups to draw meaningful results. Although rivaroxaban (29.2%) and apixaban (47.9%) users comprised the majority of the DOAC group, the results of our study cannot confirm which drug among the DOACs represented is most favorable.

In conclusion, among AF patients with advanced CKD or ESRD on dialysis, DOAC use was associated with a lower risk of major or CRNM bleeding compared to warfarin, and a lower risk of composite adverse clinical outcomes compared to no OAC.

## ACKNOWLEDGEMENTS

This research was supported by a grant of Patient-Centered Clinical Research Coordinating Center (PACEN) funded by the Ministry of Health & Welfare, Republic of Korea (grant number: HC19C0130), and by a Severance Hospital Research fund for Clinical excellence (SHRC) (C-2021-0019).

## AUTHOR CONTRIBUTIONS

**Conceptualization:** Boyoung Joung. **Data curation:** Hanjin Park and Hee Tae Yu. **Formal analysis:** Tae-Hoon Kim. **Funding acquisition:** Boyoung Joung. **Investigation:** Junbeom Park. **Methodology:** Jin-Kyu Park. **Project administration:** Ki-Woon Kang and Jaemin Shim. **Resources:** Jin-Bae Kim. **Software:** Jun Kim. **Supervision:** Eue-Keun Choi. **Validation:** Hyung Wook Park. **Visualization:** Young Soo Lee. **Writing—original draft:** Hanjin Park. **Writing—review & editing:** Hee Tae Yu. **Approval of final manuscript:** all authors.

## ORCID iDs

|              |   |
|--------------|---|
| Hanjin Park  | <a href="https://orcid.org/0000-0002-7965-532X">https://orcid.org/0000-0002-7965-532X</a> |
| Hee Tae Yu   | <a href="https://orcid.org/0000-0002-6835-4759">https://orcid.org/0000-0002-6835-4759</a> |
| Tae-Hoon Kim | <a href="https://orcid.org/0000-0003-4200-3456">https://orcid.org/0000-0003-4200-3456</a> |
| Junbeom Park | <a href="https://orcid.org/0000-0003-2192-9401">https://orcid.org/0000-0003-2192-9401</a> |
| Jin-Kyu Park | <a href="https://orcid.org/0000-0001-7931-777X">https://orcid.org/0000-0001-7931-777X</a> |
| Ki-Woon Kang | <a href="https://orcid.org/0000-0002-1361-0022">https://orcid.org/0000-0002-1361-0022</a> |
| Jaemin Shim  | <a href="https://orcid.org/0000-0001-8251-1522">https://orcid.org/0000-0001-8251-1522</a> |

Jin-Bae Kim <https://orcid.org/0000-0002-0293-0901>  
 Jun Kim <https://orcid.org/0000-0002-3573-638X>  
 Eue-Keun Choi <https://orcid.org/0000-0002-0411-6372>  
 Hyung Wook Park <https://orcid.org/0000-0002-9630-0467>  
 Young Soo Lee <https://orcid.org/0000-0002-8229-8300>  
 Boyoung Joung <https://orcid.org/0000-0001-9036-7225>

REFERENCES

1. Olesen JB, Lip GY, Kamper AL, Hommel K, Køber L, Lane DA, et al. Stroke and bleeding in atrial fibrillation with chronic kidney disease. *N Engl J Med* 2012;367:625-35.
2. Laupacis A, Boysen G, Connolly S, Ezekowitz M, Hart R, James K, et al. Risk factors for stroke and efficacy of antithrombotic therapy in atrial fibrillation. Analysis of pooled data from five randomized controlled trials. *Arch Intern Med* 1994;154:1449-57.
3. January CT, Wann LS, Alpert JS, Calkins H, Cigarroa JE, Cleveland JC Jr, et al. 2014 AHA/ACC/HRS guideline for the management of patients with atrial fibrillation: a report of the American College of Cardiology/American Heart Association task force on practice guidelines and the Heart Rhythm Society. *J Am Coll Cardiol* 2014; 64:e1-76.
4. Fauchier L, Bisson A, Clementy N, Vourc'h P, Angoulvant D, Babuty D, et al. Changes in glomerular filtration rate and outcomes in patients with atrial fibrillation. *Am Heart J* 2018;198:39-45.
5. Ananthapanyasut W, Napan S, Rudolph EH, Harindhanavudhi T, Ayash H, Guglielmi KE, et al. Prevalence of atrial fibrillation and its predictors in nondialysis patients with chronic kidney disease. *Clin J Am Soc Nephrol* 2010;5:173-81.
6. Genovesi S, Pogliani D, Faini A, Valsecchi MG, Riva A, Stefani F, et al. Prevalence of atrial fibrillation and associated factors in a population of long-term hemodialysis patients. *Am J Kidney Dis* 2005; 46:897-902.
7. Sreedhara R, Itagaki I, Lynn B, Hakim RM. Defective platelet aggregation in uremia is transiently worsened by hemodialysis. *Am J Kidney Dis* 1995;25:555-63.
8. Shah M, Avgil Tsadok M, Jackevicius CA, Essebag V, Eisenberg MJ, Rahme E, et al. Warfarin use and the risk for stroke and bleeding in patients with atrial fibrillation undergoing dialysis. *Circulation* 2014;129:1196-203.
9. Winkelmayer WC, Liu J, Setoguchi S, Choudhry NK. Effectiveness and safety of warfarin initiation in older hemodialysis patients with incident atrial fibrillation. *Clin J Am Soc Nephrol* 2011;6:2662-8.
10. Granger CB, Alexander JH, McMurray JJ, Lopes RD, Hylek EM, Hanna M, et al. Apixaban versus warfarin in patients with atrial fibrillation. *N Engl J Med* 2011;365:981-92.
11. Patel MR, Mahaffey KW, Garg J, Pan G, Singer DE, Hacke W, et al. Rivaroxaban versus warfarin in nonvalvular atrial fibrillation. *N Engl J Med* 2011;365:883-91.
12. Connolly SJ, Ezekowitz MD, Yusuf S, Eikelboom J, Oldgren J, Parekh A, et al. Dabigatran versus warfarin in patients with atrial fibrillation. *N Engl J Med* 2009;361:1139-51.
13. Giugliano RP, Ruff CT, Braunwald E, Murphy SA, Wiviott SD, Halperin JL, et al. Edoxaban versus warfarin in patients with atrial fibrillation. *N Engl J Med* 2013;369:2093-104.
14. Kim H, Kim TH, Cha MJ, Lee JM, Park J, Park JK, et al. A prospective survey of atrial fibrillation management for real-world guideline adherence: Comparison study of Drugs for symptom control and complication prevention of Atrial Fibrillation (CODE-AF) registry. *Korean Circ J* 2017;47:877-87.

15. Hindricks G, Potpara T, Dagres N, Arbelo E, Bax JJ, Blomström-Lundqvist C, et al. 2020 ESC guidelines for the diagnosis and management of atrial fibrillation developed in collaboration with the European Association for Cardio-Thoracic Surgery (EACTS): the task force for the diagnosis and management of atrial fibrillation of the European Society of Cardiology (ESC) developed with the special contribution of the European Heart Rhythm Association (EHRA) of the ESC. *Eur Heart J* 2021;42:373-498.
16. Chan KE, Edelman ER, Wenger JB, Thadhani RI, Maddux FW. Dabigatran and rivaroxaban use in atrial fibrillation patients on hemodialysis. *Circulation* 2015;131:972-9.
17. Padrini R. Clinical pharmacokinetics and pharmacodynamics of direct oral anticoagulants in patients with renal failure. *Eur J Drug Metab Pharmacokinet* 2019;44:1-12.
18. Chang M, Yu Z, Shenker A, Wang J, Pursley J, Byon W, et al. Effect of renal impairment on the pharmacokinetics, pharmacodynamics, and safety of apixaban. *J Clin Pharmacol* 2016;56:637-45.
19. Siontis KC, Zhang X, Eckard A, Bhavne N, Schaubel DE, He K, et al. Outcomes associated with apixaban use in patients with end-stage kidney disease and atrial fibrillation in the United States. *Circulation* 2018;138:1519-29.
20. Stanifer JW, Pokorney SD, Chertow GM, Hohnloser SH, Wojdyla DM, Garonzik S, et al. Apixaban versus warfarin in patients with atrial fibrillation and advanced chronic kidney disease. *Circulation* 2020;141:1384-92.
21. Koretsune Y, Yamashita T, Kimura T, Fukuzawa M, Abe K, Yasaka M. Short-term safety and plasma concentrations of edoxaban in Japanese patients with non-valvular atrial fibrillation and severe renal impairment. *Circ J* 2015;79:1486-95.
22. Wetmore JB, Roetker NS, Yan H, Reyes JL, Herzog CA. Direct-acting oral anticoagulants versus warfarin in medicare patients with chronic kidney disease and atrial fibrillation. *Stroke* 2020;51:2364-73.
23. Hohnloser SH, Hijazi Z, Thomas L, Alexander JH, Amerena J, Hanna M, et al. Efficacy of apixaban when compared with warfarin in relation to renal function in patients with atrial fibrillation: insights from the ARISTOTLE trial. *Eur Heart J* 2012;33:2821-30.
24. Bonde AN, Lip GY, Kamper AL, Hansen PR, Lamberts M, Hommel K, et al. Net clinical benefit of antithrombotic therapy in patients with atrial fibrillation and chronic kidney disease: a nationwide observational cohort study. *J Am Coll Cardiol* 2014;64:2471-82.
25. Chan KE, Lazarus JM, Thadhani R, Hakim RM. Warfarin use associates with increased risk for stroke in hemodialysis patients with atrial fibrillation. *J Am Soc Nephrol* 2009;20:2223-33.
26. Gansevoort RT, Correa-Rotter R, Hemmelgarn BR, Jafar TH, Heerspink HJ, Mann JF, et al. Chronic kidney disease and cardiovascular risk: epidemiology, mechanisms, and prevention. *Lancet* 2013; 382:339-52.
27. Sarnak MJ, Amann K, Bangalore S, Cavalcante JL, Charytan DM, Craig JC, et al. Chronic kidney disease and coronary artery disease: JACC state-of-the-art review. *J Am Coll Cardiol* 2019;74:1823-38.
28. Eikelboom JW, Connolly SJ, Bosch J, Dagenais GR, Hart RG, Shestakovska O, et al. Rivaroxaban with or without aspirin in stable cardiovascular disease. *N Engl J Med* 2017;377:1319-30.
29. Rothberg MB, Celestin C, Fiore LD, Lawler E, Cook JR. Warfarin plus aspirin after myocardial infarction or the acute coronary syndrome: meta-analysis with estimates of risk and benefit. *Ann Intern Med* 2005;143:241-50.

**Supplementary Table 1.** Baseline Characteristics of DOAC Group by the DOAC Type

| Characteristics                        | Dabigatran (n=5) | Rivaroxaban (n=14) | Apixaban (n=25) | Edoxaban (n=4) | p value |
|--|------------------|--------------------|-----------------|----------------|---------|
| Age, yr                                | 74 (69–77)       | 76 (70–78)         | 78 (70–82)      | 81 (75–82)     | 0.335   |
| Sex, female                            | 4 (80.0)         | 6 (42.9)           | 10 (40.0)       | 4 (100.0)      | 0.069   |
| Paroxysmal AF                          | 2 (40.0)         | 5 (35.7)           | 8 (32.0)        | 1 (25.0)       | 0.964   |
| Systolic BP, mm Hg                     | 143 (110–150)    | 120 (102–124)      | 120 (110–125)   | 121 (109–131)  | 0.647   |
| Diastolic BP, mm Hg                    | 79 (60–89)       | 63 (60–71)         | 67 (63–74)      | 75 (65–84)     | 0.349   |
| CHA <sub>2</sub> DS <sub>2</sub> -VASc | 5 (5–5)          | 5 (3–6)            | 4 (3–6)         | 5 (4–6)        | 0.471   |
| 1–2                                    | 0 (0.0)          | 1 (7.1)            | 5 (20.0)        | 0 (0.0)        |         |
| 3–5                                    | 4 (80.0)         | 6 (42.9)           | 13 (52.0)       | 3 (75.0)       |         |
| ≥6                                     | 1 (20.0)         | 7 (50.0)           | 7 (28.0)        | 1 (25.0)       |         |
| HAS-BLED                               | 2 (2–3)          | 3 (2–4)            | 3 (2–3)         | 2 (2–3)        | 0.413   |
| 0–2                                    | 3 (60.0)         | 5 (35.7)           | 8 (32.0)        | 3 (75.0)       |         |
| 3–4                                    | 2 (40.0)         | 8 (57.1)           | 17 (68.0)       | 1 (25.0)       |         |
| ≥5                                     | 0 (0.0)          | 1 (7.1)            | 0 (0.0)         | 0 (0.0)        |         |
| Chronic conditions                     |                  |                    |                 |                |         |
| Hypertension                           | 4 (80.0)         | 14 (100.0)         | 21 (84.0)       | 4 (100.0)      | 0.331   |
| Diabetes mellitus                      | 5 (100.0)        | 9 (64.3)           | 13 (52.0)       | 1 (25.0)       | 0.111   |
| Dyslipidemia                           | 2 (40.0)         | 6 (42.9)           | 13 (52.0)       | 1 (25.0)       | 0.753   |
| Myocardial infarction                  | 0 (0.0)          | 1 (7.1)            | 2 (8.0)         | 0 (0.0)        | 0.861   |
| Heart failure                          | 1 (20.0)         | 2 (14.3)           | 3 (12.0)        | 1 (25.0)       | 0.896   |
| Stroke                                 | 3 (60.0)         | 7 (50.0)           | 6 (24.0)        | 1 (25.0)       | 0.237   |
| PAOD                                   | 1 (20.0)         | 1 (7.1)            | 1 (4.0)         | 0 (0.0)        | 0.549   |
| CKD, stage 4                           | 2 (40.0)         | 9 (64.3)           | 14 (56.0)       | 2 (50.0)       | 0.809   |
| Medications                            |                  |                    |                 |                |         |
| RAAS inhibitor                         | 4 (80.0)         | 11 (78.6)          | 14 (56.0)       | 0 (0.0)        | 0.029   |
| Beta-blocker                           | 5 (100.0)        | 8 (57.1)           | 14 (56.0)       | 1 (25.0)       | 0.141   |
| Statin                                 | 3 (60.0)         | 6 (42.9)           | 12 (48.0)       | 1 (25.0)       | 0.753   |
| Anti-platelet drug                     | 2 (40.0)         | 4 (28.6)           | 5 (20.0)        | 0 (0.0)        | 0.496   |
| Anti-arrhythmic drugs                  | 4 (80.0)         | 5 (35.7)           | 7 (28.0)        | 1 (25.0)       | 0.162   |

AF, atrial fibrillation; BP, blood pressure; CKD, chronic kidney disease; DOAC, direct-acting oral anticoagulant; PAOD, peripheral artery occlusive disease; RAAS, renin-angiotensin-aldosterone-system.

Values are presented as the median (1st quartile, 3rd quartile) or n (%).

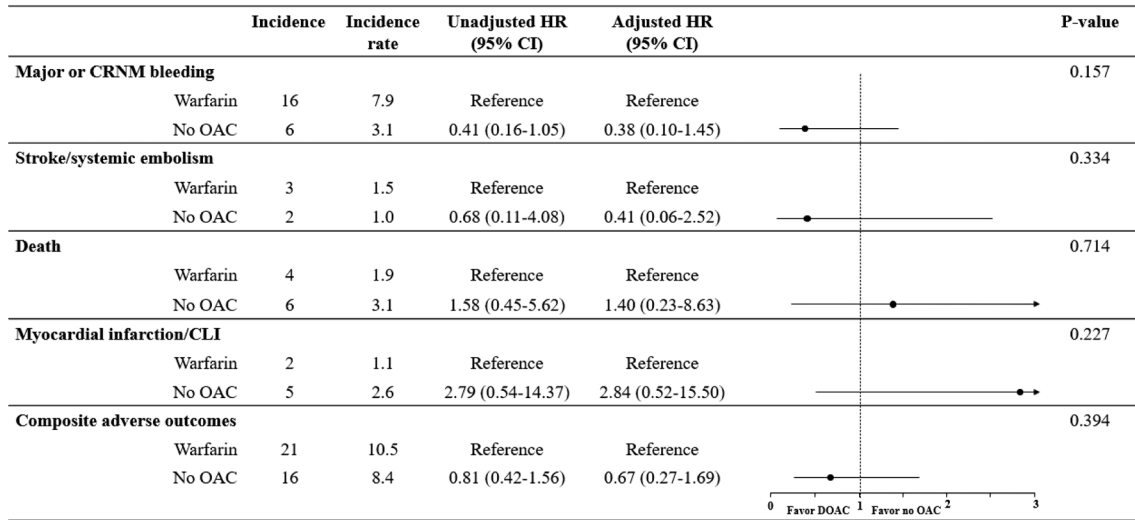


**Supplementary Table 2.** Event Numbers and Ratios of Adverse Clinical Outcomes for the Three Groups

|                            | Warfarin<br>(n=114) | DOAC            |                     |                       |                    |                   | No OAC<br>(n=98) |
|----------------------------|---------------------|-----------------|---------------------|-----------------------|--------------------|-------------------|------------------|
|                            |                     | Total<br>(n=48) | Dabigatran<br>(n=5) | Rivaroxaban<br>(n=14) | Apixaban<br>(n=25) | Edoxaban<br>(n=4) |                  |
| Major or CRNM bleeding     | 16 (14.0)           | 2 (4.2)         | 1 (20.0)            | 1 (7.1)               | 0 (0.0)            | 0 (0.0)           | 6 (6.1)          |
| Stroke/systemic embolism   | 3 (2.6)             | 1 (2.1)         | 0 (0.0)             | 0 (0.0)               | 0 (0.0)            | 1 (25.0)          | 2 (2.0)          |
| Death                      | 4 (3.5)             | 2 (4.2)         | 1 (20.0)            | 0 (0.0)               | 1 (4.0)            | 0 (0.0)           | 6 (6.1)          |
| Myocardial infarction/CLI  | 2 (1.8)             | 1 (2.1)         | 0 (0.0)             | 1 (7.1)               | 0 (0.0)            | 0 (0.0)           | 5 (5.1)          |
| Composite adverse outcomes | 21 (18.4)           | 6 (12.5)        | 2 (40.0)            | 2 (14.2)              | 1 (4.0)            | 1 (25.0)          | 16 (16.3)        |

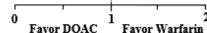
CLI, critical limb ischemia; CRNM, clinically relevant non-major; DOAC, direct-acting oral anticoagulant; OAC, oral anticoagulant.

Data are presented as n (%).



**Supplementary Fig. 1.** Event rates and HRs of adverse clinical outcomes for no OAC versus warfarin in AF patients with advanced CKD or ESRD on dialysis. Event rate is calculated for 100 person-years. AF, atrial fibrillation; CI, confidence interval; CKD, chronic kidney disease; CLI, critical limb ischemia; CRNM, clinically relevant non-major; ESRD, end-stage renal disease; HR, hazard ratio; OAC, oral anticoagulant.

|                                   |          | Incidence | Incidence rate | Unadjusted HR (95% CI) | Adjusted HR (95% CI) |  | P-value |
|-----------------------------------|----------|-----------|----------------|------------------------|----------------------|--|---------|
| <b>Major or CRNM bleeding</b>     |          |           |                |                        |                      |  | 0.043   |
|                                   | Warfarin | 16        | 7.9            | Reference              | Reference            |  |         |
|                                   | DOAC     | 1         | 1.0            | 0.13 (0.02-0.95)       | 0.07 (0.01-0.92)     |  |         |
| <b>Stroke/systemic embolism</b>   |          |           |                |                        |                      |  | 0.585   |
|                                   | Warfarin | 3         | 1.5            | Reference              | Reference            |  |         |
|                                   | DOAC     | 1         | 1.0            | 0.67 (0.07-6.52)       | 0.52 (0.06-5.36)     |  |         |
| <b>Death</b>                      |          |           |                |                        |                      |  | 0.847   |
|                                   | Warfarin | 4         | 1.9            | Reference              | Reference            |  |         |
|                                   | DOAC     | 1         | 1.0            | 0.50 (0.06-4.53)       | 0.80 (0.09-2.42)     |  |         |
| <b>Myocardial infarction/CLI</b>  |          |           |                |                        |                      |  | 0.801   |
|                                   | Warfarin | 2         | 1.1            | Reference              | Reference            |  |         |
|                                   | DOAC     | 1         | 1.0            | 1.20 (0.11-13.21)      | 1.39 (0.11-17.62)    |  |         |
| <b>Composite adverse outcomes</b> |          |           |                |                        |                      |  | 0.131   |
|                                   | Warfarin | 21        | 10.5           | Reference              | Reference            |  |         |
|                                   | DOAC     | 4         | 4.0            | 0.40 (0.14-1.18)       | 0.38 (0.11-1.33)     |  |         |



**Supplementary Fig. 2.** Event rates and HRs of adverse clinical outcomes for DOAC versus warfarin in AF patients with advanced CKD or ESRD on dialysis after excluding dabigatran users. Event rate is calculated for 100 person-years. AF, atrial fibrillation; CI, confidence interval; CKD, chronic kidney disease; CLI, critical limb ischemia; CRNM, clinically relevant non-major; DOAC, direct-acting oral anticoagulant; ESRD, end-stage renal disease; HR, hazard ratio.

|                                   |        | Incidence | Incidence rate | Unadjusted HR (95% CI) | Adjusted HR (95% CI) |  | P-value |
|-----------------------------------|--------|-----------|----------------|------------------------|----------------------|--|---------|
| <b>Major or CRNM bleeding</b>     |        |           |                |                        |                      |  | 0.281   |
|                                   | No OAC | 6         | 3.1            | Reference              | Reference            |  |         |
|                                   | DOAC   | 1         | 1.0            | 0.33 (0.04-2.72)       | 0.17 (0.02-1.50)     |  |         |
| <b>Stroke/systemic embolism</b>   |        |           |                |                        |                      |  | 0.531   |
|                                   | No OAC | 2         | 1.0            | Reference              | Reference            |  |         |
|                                   | DOAC   | 1         | 1.0            | 1.04 (0.09-11.5)       | 0.45 (0.04-5.41)     |  |         |
| <b>Death</b>                      |        |           |                |                        |                      |  | 0.169   |
|                                   | No OAC | 6         | 3.1            | Reference              | Reference            |  |         |
|                                   | DOAC   | 1         | 1.0            | 0.35 (0.04-2.90)       | 0.20 (0.02-1.96)     |  |         |
| <b>Myocardial infarction/CLI</b>  |        |           |                |                        |                      |  | 0.159   |
|                                   | No OAC | 5         | 2.6            | reference              | Reference            |  |         |
|                                   | DOAC   | 1         | 1.0            | 0.35 (0.04-2.98)       | 0.19 (0.02-1.92)     |  |         |
| <b>Composite adverse outcomes</b> |        |           |                |                        |                      |  | 0.046   |
|                                   | No OAC | 16        | 8.4            | Reference              | Reference            |  |         |
|                                   | DOAC   | 4         | 4.0            | 0.50 (0.17-1.69)       | 0.14 (0.02-0.97)     |  |         |

0 Favor DOAC 1 Favor no OAC 2

**Supplementary Fig. 3.** Event rates and HRs of adverse clinical outcomes for DOAC versus no OAC in AF patients with advanced CKD or ESRD on dialysis after excluding dabigatran users. Event rate is calculated for 100 person-years. AF, atrial fibrillation; CI, confidence interval; CKD, chronic kidney disease; CLI, critical limb ischemia; CRNM, clinically relevant non-major; DOAC, direct-acting oral anticoagulant; ESRD, end-stage renal disease; HR, hazard ratio; OAC, oral anticoagulant.