

Research Article



Effective professional intraoral tooth brushing instruction using the modified plaque score: a randomized clinical trial

Se-Ho Park , Sung-Hee Cho , Ji-Young Han

Department of Dentistry and Periodontology, Hanyang University College of Medicine, Seoul, Korea

OPEN ACCESS

Received: Dec 13, 2017

Accepted: Feb 11, 2018

*Correspondence:

Ji-Young Han

Department of Dentistry and Periodontology,
Hanyang University College of Medicine,
222-1 Wangsimni-ro, Seongdong-gu,
Seoul 04763, Korea.

E-mail: hjyperio@hanyang.ac.kr

Tel: +82-2-2290-8671

Fax: +82-2-2290-8673

Copyright © 2018. Korean Academy of
Periodontology

This is an Open Access article distributed
under the terms of the Creative Commons
Attribution Non-Commercial License (<https://creativecommons.org/licenses/by-nc/4.0/>).

ORCID iDs

Se-Ho Park

<https://orcid.org/0000-0001-8540-0940>

Sung-Hee Cho

<https://orcid.org/0000-0002-1965-4448>

Ji-Young Han

<https://orcid.org/0000-0002-2364-8366>

Author Contributions

Conceptualization: Ji-Young Han; Formal

analysis: Ji-Young Han, Se-Ho Park;

Investigation: Se-Ho Park, Sung-Hee Cho;

Methodology: Ji-Young Han, Se-Ho Park;

Project administration: Ji-Young Han; Writing

- original draft: Se-Ho Park, Ji-Young Han;

Writing - review & editing: Ji-Young Han.

Conflict of Interest

No potential conflict of interest relevant to this
article was reported.

ABSTRACT

Purpose: The purpose of this study was to evaluate the efficacy of the modified plaque score (MPS) for assessing the oral hygiene status of periodontitis patients.

Methods: A total of 116 patients were included in this study. After evaluation of the Löe and Silness gingival index (GI), Silness and Löe plaque index (PII), O'Leary plaque control record (PCR), and MPS, patients were randomly assigned to either a conventional tooth brushing instruction (C-TBI) group (n=56) or a professional intraoral tooth brushing instruction (P-TBI) group (n=60). The MPS and clinical parameters were re-evaluated after scaling and a series of root planing. The convergent validity of MPS with the PII and PCR was assessed. The measurement time for MPS and PCR was compared according to the proficiency of the examiner.

Results: After root planing, the GI, PII, PCR, and MPS improved from their respective baseline values in both groups. Three different plaque indices including the MPS, showed significant differences between the C-TBI group and the P-TBI group after root planing. The MPS showed significant concurrence with the PCR and PII. The mean time for PCR measurement was 2.76 ± 0.71 times longer than that for MPS measurement after 2 weeks of training.

Conclusions: MPS seems to be a practical plaque scoring system compared with the PII and PCR. These findings suggest that repetitive plaque control combined with an easily applicable plaque index (MPS) may facilitate more effective oral hygiene education and improved periodontal health.

Keywords: Dental plaque index; Oral hygiene; Peri-implantitis; Periodontitis

INTRODUCTION

For decades, the innumerable teeth extracted due to periodontitis have been replaced with dental implants. Unfortunately, however, dental implants are vulnerable to peri-implantitis if plaque control is inadequate [1]. Several studies have shown associations between systemic disease and periodontitis [2-4]. Therefore, the role of proper plaque biofilm control in the prevention of systemic disease and periodontitis has received a greater emphasis than ever before.

Periodontitis is a chronic disease caused by intraoral biofilms harboring periodontal pathogenic microorganisms [5,6]. Peri-implantitis is a multifactorial disease with an etiology similar to that of periodontitis [7]. Gingivitis is a reversible disease that can be successfully treated with control of the supragingival biofilm [8]. Plaque control is a critical component in all aspects of both periodontal and peri-implant diseases. Serino and Strom [9] reported that peri-implant lesions were associated with inadequate plaque control at the implant sites and rarely occurred around implants when proper plaque control was ensured. More surprisingly, Aguirre-Zorzano et al. [10] found that the prevalence of mucositis and peri-implantitis in periodontitis patients, even with regular supportive periodontal treatment, was clinically significant, implying that these conditions will pose increasing therapeutic challenges. A recent systemic review [11] has shown that mechanical plaque control procedures effectively reduced plaque and gingivitis.

The importance of plaque control and oral hygiene education for preventing periodontitis and peri-implantitis is well recognized [1]. Many plaque index systems [12-21] have been used to help improve patients' oral hygiene. In addition, several more detailed and sensitive plaque indices [17,19,21,22] have been introduced in clinical studies. However, despite their advantages, these indices are not well known among dentists or even periodontists. Therefore, they are not commonly used for oral hygiene education in patients with periodontitis or peri-implantitis. A good index system for daily practice must be simple and versatile, so that it is easily understood by inexperienced examiners and can be reproduced by different clinicians [23]. The O'Leary plaque control record (PCR) has been used for oral hygiene instruction since it was first introduced in 1972 [15]. Although the PCR corresponds to these requirements, it is difficult to perform at every visit for several reasons. It takes approximately 5 minutes for examiners to evaluate the PCR. Some patients complain about the disclosing solution because it stains the entire dentition. In addition, the PCR system is unable to precisely evaluate the quantity of plaque. The Silness and Löe plaque index (PLI) system has also been used to evaluate patients' oral hygiene status [13]. The PLI system has several advantages. It consists of 3 grades that depend on the quantity of plaque. It requires fewer teeth than does the PCR. However, there is sometimes confusion regarding the teeth used in this plaque scoring system. In addition, the second molars, which are more difficult to clean than the other teeth, are not analyzed in this system. Therefore, we combined the 2 most familiar indices (the PCR and PLI) into the modified plaque score (MPS).

This study aimed to assess the validity of the MPS and to compare it to the PCR and PLI for the evaluation of tooth brushing instructions.

MATERIALS AND METHODS

Patient selection and experimental design

This study was designed as a parallel-group, randomized clinical trial. It was performed at the Department of Periodontology, Hanyang Medical Center, Seoul, Korea. Between 2012 and 2014, 124 patients with periodontitis were recruited. Patients were enrolled in this study if they met the following inclusion criteria: 1) age ≥ 20 years; 2) ≥ 20 natural teeth; and 3) presence of proximal attachment loss of ≥ 3 mm in ≥ 2 non-adjacent teeth [24]. The exclusion criteria were as follows: 1) age < 20 years; 2) < 20 natural teeth; 3) use of a powered toothbrush; 4) pregnancy; 5) acute or chronic immune disturbance; 6) gingival hyperplasia because of the use of immunosuppressive drugs or calcium-channel blockers; 7) the use of antibiotics,

steroids, non-steroidal anti-inflammatory drugs, or anticoagulants at the beginning of the study or clinical examinations; and 8) cognitive impairment. The protocol for human subjects was reviewed and approved by the Institutional Review Board of Hanyang University Hospital (HYUN IRB No. 2012-19-019-001). The study was performed according to the Consort statement [25] and was registered on <http://cris.nih.go.kr> (No. PRE20170628-004).

Evaluation of tooth brushing instruction with 3 different plaque indices

The evaluation consisted of 5 visits over 8–12 weeks. All subjects received comprehensive periodontal treatment, including oral hygiene instruction, scaling, and a series of root planing.

At the first visit, the clinician confirmed the absence of the exclusion criteria. The participants were also asked to provide informed written consent and to complete a questionnaire on sex, age, and brushing time and frequency. Any participants who did not meet the criteria for periodontitis based on radiographic and clinical criteria or refused to participate in this study were excluded (n=4). The participants were then randomly allocated either to the conventional tooth brushing instruction (C-TBI) group (n=60) or the professional intraoral tooth brushing instruction (P-TBI) group (n=60) (Figure 1). The randomization was performed using sequentially numbered, opaque, and sealed envelopes (P.S.H.). The clinical parameters, including probing pocket depth (PPD) and clinical attachment level (CAL), were evaluated by a blinded periodontist (C.S.H.). PPD was recorded to the nearest millimeter at 6 sites (mesiobuccal, mid-buccal, distobuccal, mesiolingual, mid-lingual, and distolingual) using a periodontal probe (Williams probe, Hu-Friedy, Chicago, IL, USA). The CAL was evaluated by measuring from the cemento-enamel junction to the base of the periodontal pocket. Gingival inflammation was recorded according to the L oe and Silness gingival index (GI) [26], which was assessed at 4 sites (mesiobuccal, mid-buccal, distobuccal, and lingual) on 6 teeth (maxillary right first molar, maxillary right lateral incisor, maxillary left first premolar, mandibular right first premolar, mandibular left lateral incisor, and mandibular left first molar). The presence of plaque was recorded with the PII [13], PCR [15], and MPS. After applying a disclosing solution to each tooth, the PII, PCR, and MPS were evaluated at 4 sites (mesiobuccal, mid-buccal, distobuccal, and lingual). The PII was evaluated on 6 teeth (maxillary right first molar, maxillary right lateral incisor, maxillary left first premolar, mandibular right first premolar, mandibular left lateral incisor, and mandibular left first molar). The PCR was determined by the percentage of total surfaces (4 aspects per tooth) with plaque [15]. The MPS was recorded on 6 teeth (maxillary right first molar, maxillary right central incisor, maxillary left second molar, mandibular right second molar, mandibular left central incisor, and mandibular left first molar) according to the criteria of the PII (Figure 2). The MPS included the 2 second molars where the highest mean total counts of microbial species were found [27]. The MPS percentage was calculated according to the following formula:

$$\text{MPS percentage} = \frac{\text{Sum of PII (\#16 + \#11 + \#27 + \#36 + \#31 + \#47)}}{72} \times 100$$

After the clinical evaluation, scaling was performed to remove all supragingival plaque deposits and dental calculus. The participants in both groups were asked to clean their teeth to the best of their ability using their own oral hygiene devices. The participants in the professional tooth brushing instruction group were asked to bring their personal toothbrushes and interproximal brushes to the next visit.

At the second visit, the GI, PII, PCR, and MPS were assessed. In the C-TBI group, the instructor (P.S.H.) demonstrated the required brushing technique using a dentiform model

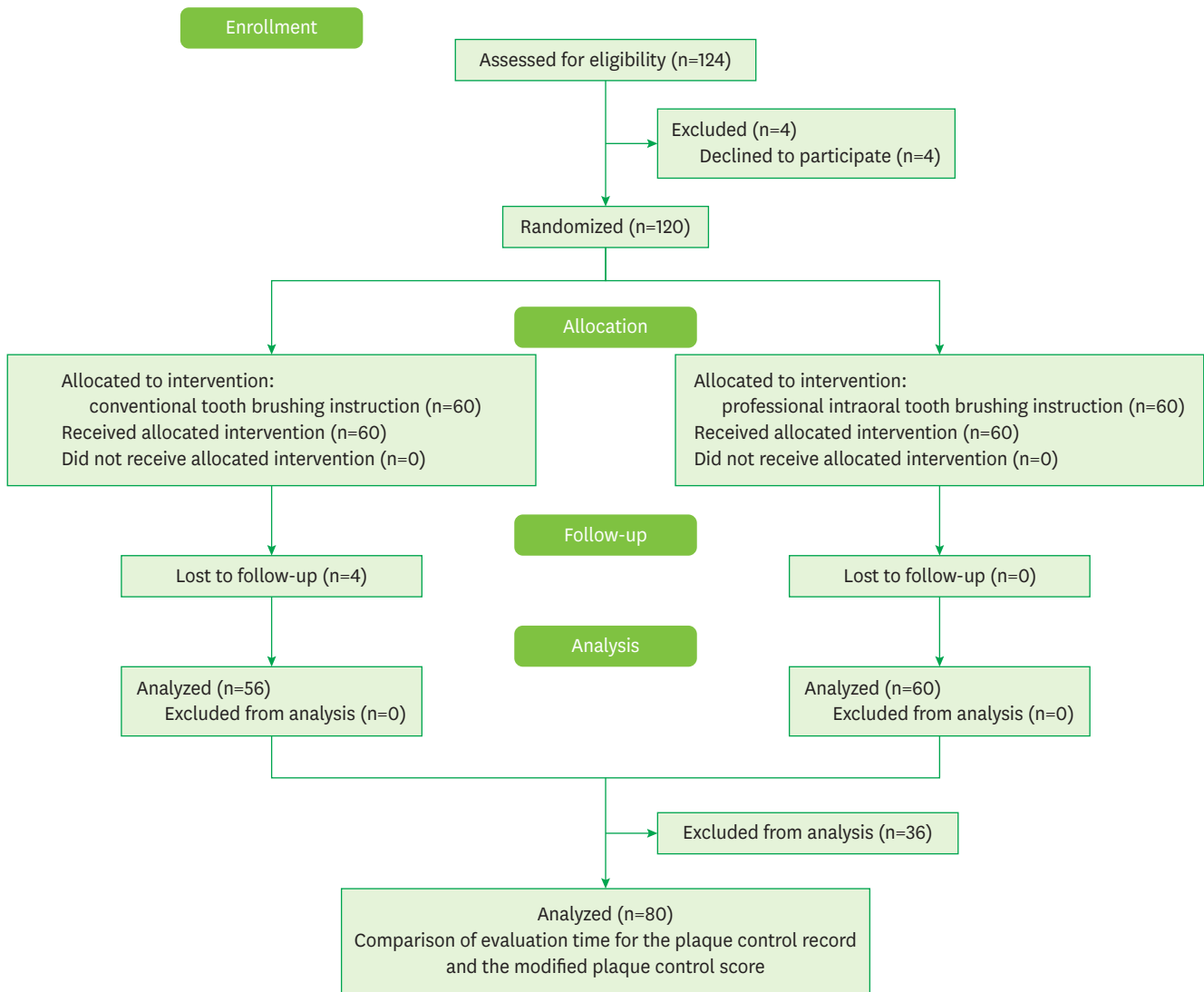


Figure 1. Flow chart of the participants in this study.

C-TBI: conventional tooth brushing instruction, P-TBI: professional intraoral tooth brushing instruction, PCR: O’Leary plaque control record, MPS: modified plaque score.

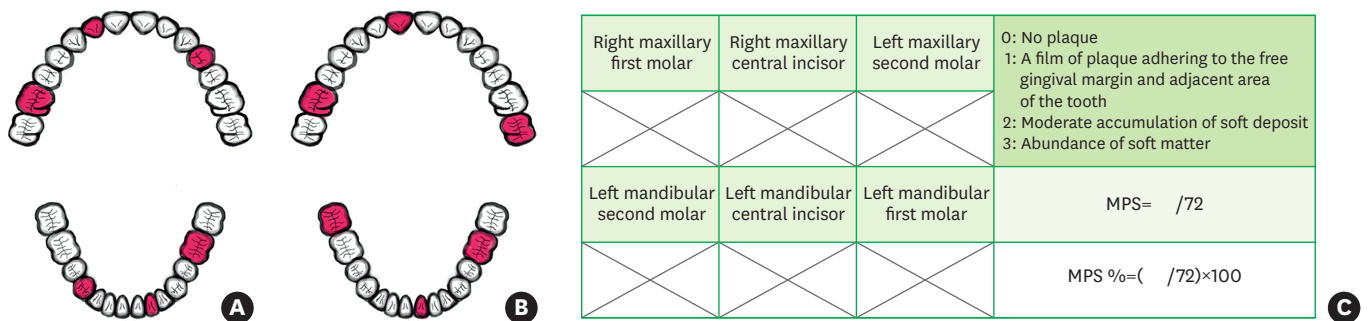


Figure 2. Six teeth were evaluated to record the PII (A) and the MPS (B). The MPS was assessed according to the criteria of the PII using a disclosing solution (C). PII: Silness and Löe plaque index, MPS: modified plaque score.

and a demonstration toothbrush. The participants in the professional tooth brushing instruction group were presented with the same information by the same instructor (P.S.H.). However, in the professional tooth brushing instruction group, the instructor showed the participant the uncleaned tooth surfaces after applying a disclosing solution. The instructor was aware of individual skill deficits, which were also reported to each participant. The instructor emphasized all information relevant to overcome these deficits at each respective site. If, for instance, a participant had neglected the lingual surfaces while the buccal surfaces were fairly clean, the intervention emphasized how to brush the lingual surfaces with the modified Bass technique. The instructor showed the participant how to brush uncleaned tooth surfaces directly using the participant's own toothbrush in the participant's mouth. In both groups, the instructions were designed to last approximately 10 minutes. All the participants were given the same manual toothbrush (Systema genki, Lion Co., Tokyo, Japan) and interproximal brush (Systema interdental brush, Lion Co., Tokyo, Japan) to minimize confounding factors depending on the toothbrush type. In addition, the instructor recommended the same brushing time (3 minutes) and brushing frequency (at least twice a day) to the participants in both groups. After oral hygiene instruction with the 2 different techniques, root planing was performed in both groups. Three visits for root planing procedures were completed before the re-evaluation.

After a series of root planing procedures, all participants were reevaluated using the GI, PII, PCR, and MPS. Clinical parameters including the PPD and CAL were also evaluated. The participants were only aware of the general aim of the study in order to avoid the Hawthorne effect.

Convergent validity of the MPS

Several methods exist for proving the validity of a scoring system of plaque quantity. The most popular method of evaluating the correlation of a novel system with another index (that is already well established and considered to be standard) is to assess its convergent validity [21]. The PII and PCR are widely used and considered to be standard plaque indices. Therefore, we used the PII and PCR to assess the convergent validity of the MPS.

Comparison of evaluation time for the PCR and MPS

The evaluation time for the PCR and MPS was assessed in the patients who had complied with the 3-month recall system. To minimize inter-rater differences, a single experienced periodontist (C.S.H.) taught 40 students how to assess the PCR and MPS. In the first week, 40 students evaluated patients' oral hygiene status using the PCR and MPS. The evaluation time was measured using a stopwatch (Compact stop watch, Morning Glory Co., Seoul, Korea). After 2 weeks of training, the evaluation time for PCR and MPS by the same students was re-assessed. The evaluation time ratio (PCR/MPS) was calculated and compared between the first and third weeks.

Intraexaminer reliability

Scaling and a series of root planing procedures were performed by one periodontist (H.J.Y.). All clinical parameters, including the PPD and CAL, were measured by a blinded examiner (C.S.H.). The PII and MPS were evaluated twice by the same examiner (C.S.H.). The reproducibility of the PII and MPS measurements was assessed with Bland-Altman plots and intraclass correlation coefficients.

Statistical analysis

All statistical analyses were performed using a commercially available software program (SPSS version 21.0, IBM Corp., Armonk, NY, USA). Metric variables (e.g., age) were reported as means with standard deviations. Sample size was calculated with a test power of 0.8, considering a 10% dropout rate. Normality was assessed using the Kolmogorov-Smirnov test and the Shapiro-Wilk test. All clinical parameters were shown to correspond with the assumption of normal distribution. The differences between the C-TBI group and the professional tooth brushing instruction group were evaluated using the independent *t*-test. The differences in the clinical parameters at baseline, after scaling, and after a series of root planing for each group were evaluated using repeated-measures analysis of variance. The convergent validity of the MPS with the PCR and PII was evaluated using the Pearson and Spearman correlations. The evaluation time for the PCR and MPS was evaluated with the Student's *t*-test to assess differences between the 2-time points. *P* values <0.05 were considered to indicate statistical significance.

RESULTS

Evaluation of tooth brushing instruction with 3 different plaque indices

The characteristics of the study group are presented in Table 1. The mean age was 53.84±10.55 years in the C-TBI group (n=56) and 56.05±11.02 years in the professional intraoral tooth brushing group (n=60). There were no statistically significant differences between the groups with regard to age, sex, brushing time, or brushing frequency. The mean brushing frequency of the entire study group was 2.51±0.70 times per day.

There were no differences between the groups in the baseline mean GI, PII, MPS, and PCR values (Table 2). At baseline, the mean PII was 1.31±0.22 and the mean MPS was 1.58±0.37 in the C-TBI group. In the P-TBI group, the mean PII was 1.37±0.44 and the mean MPS was

Table 1. Patient characteristics at baseline

Characteristic	C-TBI group (n=56)	P-TBI group (n=60)	Total (n=116)	<i>P</i> value
Age (yr)	53.84±10.55	56.05±11.02	54.98±10.81	0.344
Gender (male/female)	32/24	38/22	70/46	0.199
Tooth brushing time (min)	2.71±1.07	2.42±0.87	2.56±0.98	0.247
Tooth brushing frequency (times/day)	2.55±0.74	2.47±0.68	2.51±0.70	0.571

Values are presented as mean±standard deviation.

C-TBI: conventional tooth brushing instruction, P-TBI: professional intraoral tooth brushing instruction.

Table 2. Evaluation of tooth brushing instruction with 3 different plaque indices (mean±SD)

Clinical parameter	Baseline			After scaling			After root planing		
	C-TBI group	P-TBI group	<i>P</i> value	C-TBI group	P-TBI group	<i>P</i> value	C-TBI group	P-TBI group	<i>P</i> value
GI	1.30±0.12	1.27±0.15	0.09	0.84±0.07	0.85±0.12	0.597	0.56±0.08	0.54±0.06	0.131
PII	1.31±0.22	1.37±0.44	0.235	1.11±0.33	1.08±0.41	0.75	0.77±0.18	0.70±0.18	0.031 ^{a)}
MPS	1.58±0.37	1.56±0.44	0.967	1.22±0.33	1.18±0.41	0.597	1.13±0.33	0.98±0.31	0.023 ^{a)}
MPS percentage (%)	52.58±12.26	51.92±14.68	0.967	40.55±10.86	39.38±13.65	0.597	37.59±11.11	32.69±10.19	0.023 ^{a)}
PCR (%)	30.40±5.37	30.16±6.40	0.886	23.41±4.16	22.98±4.88	0.473	20.09±3.77	18.32±3.79	0.017 ^{a)}
CAL ≥3 mm (%)	39.51±2.36	39.71±1.89	0.973	NA	NA	NA	25.87±1.40	25.79±1.38	0.753
PPD ≥4 mm (%)	37.99±2.49	38.51±2.19	0.507	NA	NA	NA	20.18±1.14	19.98±1.55	0.51

SD: standard deviation, C-TBI: conventional tooth brushing instruction, P-TBI: professional intraoral tooth brushing instruction, GI: Löe and Silness gingival index, PII: Silness and Löe plaque index, MPS: modified plaque score, PCR: O'Leary plaque control record, CAL: clinical attachment level, PPD: probing pocket depth, NA: not assessed.

^{a)}Statistically significant difference between the C-TBI and P-TBI groups (*P*<0.05).

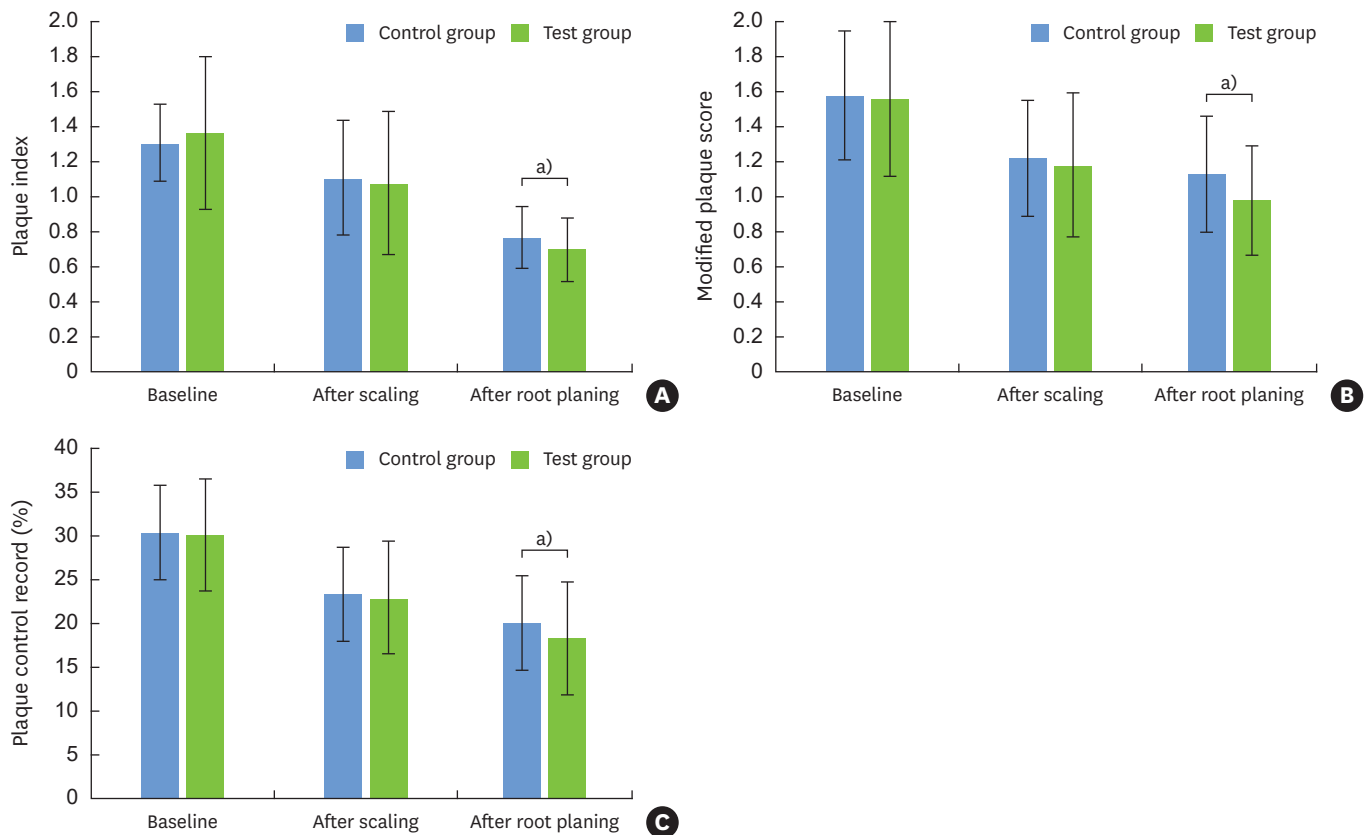


Figure 3. After scaling and root planing with 2 different oral hygiene instruction techniques, the mean PII scores improved in both groups (A). Changes in the MPS (B) and the PCR (C) in the 2 groups. Improvements in oral hygiene status were significantly greater in the P-TBI group than the C-TBI group according to all 3 plaque indices.
 PII: Silness and Løe plaque index, MPS: modified plaque score, PCR: O'Leary plaque control record, P-TBI: professional intraoral tooth brushing instruction, C-TBI: conventional tooth brushing instruction.
^{a)}Statistically significant difference ($P<0.05$).

1.56±0.44 at baseline. In the C-TBI group, the mean MPS percentage was 52.58%±12.26% and the mean PCR was 30.4%±5.37% at baseline. At baseline, the mean MPS percentage was 51.92%±14.68% and the mean PCR was 30.16%±6.4% in the P-TBI group. After root planing, there were significant differences between the 2 groups in the mean PII, PCR, and MPS values ($P=0.031$, $P=0.017$, and $P=0.023$, respectively) (Figure 3). The mean MPS percentage in the C-TBI group (37.59%±11.11%) was significantly greater than that in the P-TBI group (32.69%±10.19%) after root planing ($P=0.023$). After root planing, the mean PCR score was 20.09%±3.77% and 18.32%±3.79% in the C-TBI group and the P-TBI group, respectively. Statistically significant differences were found between the C-TBI group and the P-TBI group ($P=0.031$).

Convergent validity

Table 3 shows the convergent validity of the MPS measurements with the other plaque scoring systems. The correlations between the MPS percentage and PCR were 0.855 (Pearson correlation coefficient) and 0.861 (Spearman correlation coefficient) after a series of root planing. The Pearson correlation coefficient and Spearman correlation coefficient for the MPS and PII were 0.863 and 0.884, respectively. The MPS showed significant concurrence with the PCR and PII in both groups.

Table 3. Correlations of MPS measurements with the PCR and PII

Convergent validity	MPS percentage and PCR			MPS and PII		
	Total	C-TBI group	P-TBI group	Total	C-TBI group	P-TBI group
Baseline						
Pearson <i>r</i>	0.776	0.737	0.801	0.900	0.937	0.897
Spearman <i>p</i>	0.812	0.789	0.829	0.893	0.924	0.891
After scaling						
Pearson <i>r</i>	0.830	0.814	0.842	0.892	0.861	0.922
Spearman <i>p</i>	0.810	0.719	0.830	0.896	0.864	0.927
After root planing						
Pearson <i>r</i>	0.855	0.894	0.814	0.863	0.825	0.894
Spearman <i>p</i>	0.861	0.898	0.816	0.884	0.828	0.923

Statistically significant for all values ($P < 0.01$).

MPS: modified plaque score, PCR: O'Leary plaque control record, PII: Silness and Loe plaque index, C-TBI: conventional tooth brushing instruction, P-TBI: professional intraoral tooth brushing instruction.

Table 4. Comparison of evaluation times for the PCR and MPS in the first and the third weeks (mean±SD)

Evaluation time	No.	PCR (sec)	MPS (sec)	Difference (sec)	Ratio (PCR/MPS)
Week 1	40	361.51±75.61	142.90±32.57	218.60±61.85	2.58±0.50
Week 3	40	298.18±45.40	113.01±24.02	185.18±51.92	2.76±0.71
<i>P</i> value		<0.001	<0.001	0.005	0.098

PCR: O'Leary plaque control record, MPS: modified plaque score, SD: standard deviation.

Comparison of evaluation time for the PCR and MPS

The mean time for PCR assessment was 361.51±75.61 seconds in the first week (Table 4). After 2 weeks of education and training, the mean time for PCR assessment decreased to 298.18±45.40 seconds in the same students. The mean time for MPS assessment was 142.90±32.57 seconds in the first week. The mean time for MPS assessment in the third week was 113.01±24.02 seconds. In the first week, the mean time for PCR assessment was 2.58±0.50 times longer than that for MPS assessment. After 2 weeks of training, the mean time for PCR assessment was 2.76±0.71 times longer than that for MPS assessment.

Intraexaminer reliability

Bland-Altman plots for the PII measurements and the MPS measurements showed good agreement. The intraclass correlation coefficients for the PII and MPS were 0.973 and 0.963, respectively.

DISCUSSION

This study sought to determine the efficacy of the MPS for the evaluation of oral hygiene status in periodontitis patients. It further assessed the convergent validity of the MPS with the PCR and PII.

We evaluated the efficacy of the MPS in comparison with 2 different plaque indices in patients receiving tooth brushing instructions. The goal of self-performed mechanical plaque control is to establish optimal supragingival plaque control. This is based on the cooperation and confidence of both patients and clinicians. Clinicians must motivate their patients to change their established habits. Many studies have addressed the importance of the doctor-patient relationship in health outcomes [28-30]. Oral hygiene programs should include self-assessment, self-examination, self-monitoring, and self-instruction. To facilitate these behaviors, a disclosing solution was used to visualize dental plaque on the patients' teeth. The visualization of bleeding gingival sites and plaque with the disclosing solution

may encourage patients to change their behavior. While PII measurements were assessed without using a disclosing solution, we used a disclosing solution to visualize sites of plaque accumulation more prominently, which minimized inter-rater errors in recording the plaque indices. This solution also confirmed the effectiveness of tooth brushing techniques on plaque removal.

In this study, we evaluated the convergent validity of the MPS with the PCR and PII. Both PCR and PII measurements are internationally well-accepted and validated standard plaque indices. The correlation between the MPS percentage and PCR was statistically significant ($P < 0.01$), and the correlation between the MPS and PII showed statistically significant convergent validity ($P < 0.01$). The MPS percentage values were higher than those of PCR in both groups at 3 different time points. This can be beneficial for motivating patients receiving oral hygiene education. In addition, the values of the MPS were higher than those of the PII in both groups at 3 different time points. Both indices used the same number of teeth ($n=6$) and the same grading system (0, 1, 2, and 3). However, we evaluated 2 second molars in the MPS rather than 2 premolars in the PII. Therefore, the motivation and education using the MPS enabled participants to improve their oral hygiene more efficiently. Several sensitive plaque indices [16,19,21,31] have been also introduced. A new method of plaque scoring [19] was reported to have less variability within and between examiners than the Turesky modification of the plaque index by Quigley and Hein [12]. The new marginal plaque index [21] showed a high sensitivity to marginal plaque accumulation. Even though these plaque indices are sensitive and beneficial for clinical research, it is difficult to put these plaque indices to use in daily practice for several reasons. The criteria of these indices are rather complicated and sometimes confuse examiners who are accustomed to another plaque index system.

To minimize confounding factors, participants in both groups were given the same toothbrushes and interdental brushes after 2 different sessions of tooth brushing instructions. In addition, we recommended the same brushing time and frequency to the participants in both groups. As shown by van der Weijden et al. [32], an optimal result is achievable after 3 minutes of manual brushing. A recent systemic review [33] suggested that brushing for 2 minutes or longer should be encouraged, regardless of the brush type. In Korea, people are taught (from kindergarten) to brush their teeth for 3 minutes after meals, 3 times a day. A recent clinical study [34] suggested that self-performed mechanical plaque control at 12- or 24-hour intervals was sufficient to maintain periodontal health in patients with no or limited clinical attachment loss. Therefore, we recommended that the participants brush at least twice a day.

A previous study of tooth brushing instructional methods concluded that individual direct instructional methods (using a dentiform model and a toothbrush) had little effect during a 2-week period and no effect after 2 weeks [35]. Harnacke et al. [36] showed similar results to that study [35]. They found that a single computer-based training session had limited effects that waned after 12 weeks. Repetitive training might be needed to habituate patients to the required brushing technique. Although the proper use of a plaque index system can facilitate efficient tooth brushing instruction, we hesitate to use any of them because of the time and effort required. In the present study, P-TBI using several plaque indices contributed to improvements in patients' oral hygiene compared to the results obtained using a C-TBI technique. Repetitive training with easily accessible plaque index systems will produce more efficient and more successful oral hygiene programs. We compared the evaluation time of PCR and MPS according to the examiner's proficiency. After 2 weeks of education, previously

untrained examiners could use the MPS to assess a patient's oral hygiene status in one-third of the evaluation time of PCR measurements.

The primary strength of this study is that we compared 2 different tooth brushing instruction techniques for evaluating the efficacy of the MPS compared with the PII and PCR. In addition, most studies [34,36,37] of mechanical plaque control have been conducted in adults with gingivitis. However, this study was performed in periodontitis patients, which enabled periodontists to educate patients about oral hygiene more effectively using the new plaque scoring system (MPS). A limitation of this study is that it focused on short-term changes in oral hygiene following an educational program. Future long-term studies are needed to investigate the maintenance of oral hygiene behavior after P-TBI using the MPS.

This study showed the efficacy of the MPS in tooth brushing instruction in periodontitis patients. The MPS showed good concurrence with the PII and PCR. Therefore, we believe that the MPS can be used as a plaque scoring system like the PII and PCR in oral hygiene education. In addition, the MPS seems to be useful for repetitive oral hygiene education, as it requires less time. The MPS measurements are practical and can be easily applied in clinical settings, regardless of the examiner's experience. Therefore, it is suggested that repetitive oral hygiene education using the MPS will promote patients' periodontal health during supportive periodontal treatment, as well as during the active treatment of periodontitis and peri-implantitis.

ACKNOWLEDGEMENTS

The authors are deeply grateful to all the participants in this study. We would also like to thank Prof. En-Woo Nam of the Biostatistical Consulting and Research Lab, Hanyang University for assistance with statistical analysis and Seong-Jin Ahn at Hanyang Medical Center for radiographic assistance.

REFERENCES

1. Salvi GE, Ramseier CA. Efficacy of patient-administered mechanical and/or chemical plaque control protocols in the management of peri-implant mucositis. A systematic review. *J Clin Periodontol* 2015;42 Suppl 16:S187-201.
[PUBMED](#) | [CROSSREF](#)
2. Linden GJ, Lyons A, Scannapieco FA. Periodontal systemic associations: review of the evidence. *J Clin Periodontol* 2013;40 Suppl 14:S8-19.
[PUBMED](#) | [CROSSREF](#)
3. Reichert S, Haffner M, Keysser G, Schafer C, Stein JM, Schaller HG, et al. Detection of oral bacterial DNA in synovial fluid. *J Clin Periodontol* 2013;40:591-8.
[PUBMED](#) | [CROSSREF](#)
4. Tonetti MS, Van Dyke TE Working group 1 of the joint EFP/AAP workshop. Periodontitis and atherosclerotic cardiovascular disease: consensus report of the Joint EFP/AAP Workshop on Periodontitis and Systemic Diseases. *J Clin Periodontol* 2013;40 Suppl 14:S24-9.
[PUBMED](#) | [CROSSREF](#)
5. Kornman KS, Loe H. The role of local factors in the etiology of periodontal diseases. *Periodontol* 2000 1993;2:83-97.
[PUBMED](#) | [CROSSREF](#)
6. Haffajee AD, Socransky SS. Microbial etiological agents of destructive periodontal diseases. *Periodontol* 2000 1994;5:78-111.
[PUBMED](#) | [CROSSREF](#)

7. Renvert S, Quirynen M. Risk indicators for peri-implantitis. A narrative review. *Clin Oral Implants Res* 2015;26 Suppl 11:15-44.
[PUBMED](#) | [CROSSREF](#)
8. Chapple IL, Van der Weijden F, Doerfer C, Herrera D, Shapira L, Polak D, et al. Primary prevention of periodontitis: managing gingivitis. *J Clin Periodontol* 2015;42 Suppl 16:S71-6.
[PUBMED](#) | [CROSSREF](#)
9. Serino G, Strom C. Peri-implantitis in partially edentulous patients: association with inadequate plaque control. *Clin Oral Implants Res* 2009;20:169-74.
[PUBMED](#) | [CROSSREF](#)
10. Aguirre-Zorzano LA, Estefania-Fresco R, Telletxea O, Bravo M. Prevalence of peri-implant inflammatory disease in patients with a history of periodontal disease who receive supportive periodontal therapy. *Clin Oral Implants Res* 2015;26:1338-44.
[PUBMED](#) | [CROSSREF](#)
11. Figuero E, Nobrega DF, Garcia-Gargallo M, Tenuta LM, Herrera D, Carvalho JC. Mechanical and chemical plaque control in the simultaneous management of gingivitis and caries: a systematic review. *J Clin Periodontol* 2017;44 Suppl 18:S116-34.
[PUBMED](#) | [CROSSREF](#)
12. Quigley GA, Hein JW. Comparative cleansing efficiency of manual and power brushing. *J Am Dent Assoc* 1962;65:26-9.
[PUBMED](#) | [CROSSREF](#)
13. Silness J, Loe H. Periodontal disease in pregnancy. II. Correlation between oral hygiene and periodontal condition. *Acta Odontol Scand* 1964;22:121-35.
[PUBMED](#) | [CROSSREF](#)
14. Turesky S, Gilmore ND, Glickman I. Reduced plaque formation by the chloromethyl analogue of vitamin C. *J Periodontol* 1970;41:41-3.
[PUBMED](#) | [CROSSREF](#)
15. O'Leary TJ, Drake RB, Naylor JE. The plaque control record. *J Periodontol* 1972;43:38.
[PUBMED](#) | [CROSSREF](#)
16. Rustogi KN, Curtis JP, Volpe AR, Kemp JH, McCool JJ, Korn LR. Refinement of the Modified Navy Plaque Index to increase plaque scoring efficiency in gumline and interproximal tooth areas. *J Clin Dent* 1992;3:C9-12.
[PUBMED](#)
17. Renton-Harper P, Claydon N, Warren P, Newcombe RG, Addy M. Conversion of plaque-area measurements to plaque index scores. An assessment of variation and discriminatory power. *J Clin Periodontol* 1999;26:429-33.
[PUBMED](#) | [CROSSREF](#)
18. Matthijs S, Sabzevar MM, Adriaens PA. Intra-examiner reproducibility of 4 dental plaque indices. *J Clin Periodontol* 2001;28:250-4.
[PUBMED](#) | [CROSSREF](#)
19. Dababneh RH, Khouri AT, Smith RG, Addy M. A new method of plaque scoring: a laboratory comparison with other plaque indices. *J Clin Periodontol* 2002;29:832-7.
[PUBMED](#) | [CROSSREF](#)
20. McCracken GI, Preshaw PM, Steen IN, Swan M, deJager M, Heasman PA. Measuring plaque in clinical trials: index or weight? *J Clin Periodontol* 2006;33:172-6.
[PUBMED](#) | [CROSSREF](#)
21. Deinzer R, Jahns S, Harnacke D. Establishment of a new marginal plaque index with high sensitivity for changes in oral hygiene. *J Periodontol* 2014;85:1730-8.
[PUBMED](#) | [CROSSREF](#)
22. Butler BL, Morejon O, Low SB. An accurate, time-efficient method to assess plaque accumulation. *J Am Dent Assoc* 1996;127:1763-6.
[PUBMED](#) | [CROSSREF](#)
23. Davies GN. The different requirements of periodontal indices for prevalence studies and clinical trials. *Int Dent J* 1968;18:560-9.
[PUBMED](#)
24. Tonetti MS, Claffey N. European Workshop in Periodontology group C. Advances in the progression of periodontitis and proposal of definitions of a periodontitis case and disease progression for use in risk factor research. Group C consensus report of the 5th European Workshop in Periodontology. *J Clin Periodontol* 2005;32 Suppl 6:210-3.
[PUBMED](#) | [CROSSREF](#)

25. Schulz KF, Altman DG, Moher D. CONSORT 2010 statement: updated guidelines for reporting parallel group randomised trials. *J Pharmacol Pharmacother* 2010;1:100-7.
[PUBMED](#) | [CROSSREF](#)
26. Loe H, Silness J. Periodontal disease in pregnancy. I. Prevalence and severity. *Acta Odontol Scand* 1963;21:533-51.
[PUBMED](#) | [CROSSREF](#)
27. Haffajee AD, Teles RP, Patel MR, Song X, Yaskell T, Socransky SS. Factors affecting supragingival biofilm composition. II. Tooth position. *J Periodontol Res* 2009;44:520-8.
[PUBMED](#) | [CROSSREF](#)
28. Stewart MA. Effective physician-patient communication and health outcomes: a review. *CMAJ* 1995;152:1423-33.
[PUBMED](#)
29. Beck RS, Daughtridge R, Sloane PD. Physician-patient communication in the primary care office: a systematic review. *J Am Board Fam Pract* 2002;15:25-38.
[PUBMED](#)
30. Kerse N, Buetow S, Mainous AG 3rd, Young G, Coster G, Arroll B. Physician-patient relationship and medication compliance: a primary care investigation. *Ann Fam Med* 2004;2:455-61.
[PUBMED](#) | [CROSSREF](#)
31. Dababneh RH, Khouri AT, Smith RG, Addy M. Correlation and examiner agreement between a new method of plaque scoring and a popular established plaque index, modelled *in vitro*. *J Clin Periodontol* 2002;29:1107-11.
[PUBMED](#) | [CROSSREF](#)
32. Van der Weijden GA, Timmerman MF, Nijboer A, Lie MA, Van der Velden U. A comparative study of electric toothbrushes for the effectiveness of plaque removal in relation to toothbrushing duration. Timerstudy. *J Clin Periodontol* 1993;20:476-81.
[PUBMED](#) | [CROSSREF](#)
33. Van der Weijden FA, Slot DE. Efficacy of homecare regimens for mechanical plaque removal in managing gingivitis a meta review. *J Clin Periodontol* 2015;42 Suppl 16:S77-91.
[PUBMED](#) | [CROSSREF](#)
34. de Freitas GC, Pinto TM, Grellmann AP, Dutra DA, Susin C, Kantorski KZ, et al. Effect of self-performed mechanical plaque control frequency on gingival inflammation revisited: a randomized clinical trial. *J Clin Periodontol* 2016;43:354-8.
[PUBMED](#) | [CROSSREF](#)
35. Ahn JK, Kim JB. An experimental study on the effects of the toothbrushing instructional methods. *J Korean Acad Dent Health* 1985;9:127-33.
36. Harnacke D, Stein K, Stein P, Margraf-Stiksrud J, Deinzer R. Training in different brushing techniques in relation to efficacy of oral hygiene in young adults: a randomized controlled trial. *J Clin Periodontol* 2016;43:46-52.
[PUBMED](#) | [CROSSREF](#)
37. Harnacke D, Beldoch M, Bohn GH, Seghaoui O, Hegel N, Deinzer R. Oral and written instruction of oral hygiene: a randomized trial. *J Periodontol* 2012;83:1206-12.
[PUBMED](#) | [CROSSREF](#)