

Changes in background electroencephalography and regional cerebral glucose metabolism in focal epilepsy patients after 1-month administration of levetiracetam

Seong Hoon Kim^{1,*}
Sung-Chul Lim^{1,2,*}
Woojun Kim^{1,2}
Oh-hun Kwon³
Chan Mi Kim³
Jong-Min Lee³
Young-Min Shon^{1,2}

¹Department of Neurology,
²Catholic Neuroscience Institute,
College of Medicine, The Catholic
University of Korea, Seocho-gu, Seoul,
Republic of Korea; ³Department of
Biomedical Engineering, Hanyang
University, Seoul, Republic of Korea

*These authors contributed equally
to this work

Abstract: The antiseizure efficacy and safety of levetiracetam (LEV) is well documented; however, few clinical studies have investigated the predictability of patient responsiveness to LEV, especially when the drug is first administered. The aim of this study was to ascertain the utility of clinical, electrophysiological, and neuroimaging parameters for assessing the early response to LEV treatment in focal epilepsy patients. Twelve confirmed focal epilepsy patients were included who had never taken LEV before. At baseline and 1 month after LEV administration, all subjects underwent 18F-fluorodeoxyglucose positron emission tomography (FDG-PET) and electroencephalography (EEG), and completed the Quality of Life in Epilepsy questionnaire (QOLIE-31). Participants were divided by drug response: good versus poor. The good response group (seven subjects) was defined by a >50% decrease in seizure frequency compared to baseline (3 months before LEV intake). The other five participants with a <50% decrease in seizure frequency were placed into the poor response group. We compared the differential changes in brain glucose metabolism on FDG-PET, power spectrum on the EEG, and QOLIE-31 results between the two groups after a 1-month LEV trial. In the good response group, it was possible to identify brain regions with increased glucose metabolism, including the bilateral caudate nuclei and both frontal and left parietal regions (uncorrected $P < 0.005$). In the poor response group, FDG-PET did not reveal any areas with significantly increased glucose metabolism. In the good response group, spectral EEG analysis revealed decreased delta power (1–3 Hz, $P < 0.05$) in the parietal region and increased beta 1 power (13–19 Hz, $P < 0.05$) in the frontal region, whereas no significant changes were observed in the poor response group. There were no significant changes on the QOLIE-31 in either group after a 1-month LEV trial. Our results suggest that LEV-induced glucose metabolism and EEG spectral changes may be indicative of initial drug responsiveness as early as 1 month following treatment initiation. These parameters may be useful prognostic markers of antiseizure effects caused by LEV medication or may indicate an epiphenomenon of LEV-induced changes in glucose metabolism and EEG frequency. Further studies with larger sample sizes are warranted.

Keywords: FDG-PET, responsiveness, background EEG, power spectral change

Correspondence: Young-Min Shon
College of Medicine, The Catholic
University of Korea, 222 Banpo-
daero, Seocho-gu, Seoul, 137-701,
Republic of Korea
Tel +82 2 2258 6079
Fax +82 2 533 6079
Email sonogung@catholic.ac.kr

Introduction

Antiepileptic drugs (AEDs) are the primary treatment option for controlling seizures in epilepsy patients, but they can also impair cerebral metabolism and cognitive performance. AEDs inhibit neuronal excitability, enhance inhibitory neuron activity, and alter neurochemical systems in the brain.¹ The preferred method with which to examine the effects of AEDs on cognitive function has been neuropsychological testing, but

these types of tests have several limitations including practice effects and test–retest variability.^{1–3} However, measures of cerebral glucose metabolism and quantitative electroencephalogram (EEG) can provide additional insight into the effects of AEDs on cognitive function.

The cerebral metabolic rate of glucose is often used as an index of brain activity, and the effects of AEDs on brain glucose metabolism have been correlated with changes in cognitive function. Different AEDs depress cerebral metabolism to variable degrees. Phenobarbital, phenytoin, and carbamazepine all lower cerebral glucose metabolism, whereas valproic acid depresses cerebral metabolism to a greater degree than carbamazepine or phenytoin but less so than phenobarbital.⁴ Lamotrigine reduces cerebral glucose metabolism in the thalamus, basal ganglia, and multiple cortical lesions.⁵ Topiramate suppresses glucose metabolism in the thalamocortical network and midbrain.⁶

EEG is highly sensitive to an individual's cognitive function and can provide information about alertness. Many published studies have investigated the influence of cognitive function on EEG results.^{7,8} In EEG frequency domain analysis, the power of each band can serve as an important indicator of cerebral activity.^{9,10} Some AEDs affect the frequency characteristics of an ongoing EEG.¹¹ In addition, the current-source analysis of digital EEG data can be used to directly measure neuronal activity and identify the approximate location of current sources.

Old AEDs can have negative effects on cerebral glucose metabolism and background EEGs.^{11,12} Some new AEDs such as levetiracetam (LEV) and lamotrigine result in less severe cognitive adverse effects compared with older AEDs.^{1,13} LEV also has multiple antiepileptic mechanisms and linear pharmacokinetics.¹⁴ LEV does not negatively influence cognitive function and may even improve it.¹⁵ EEG studies have reported that LEV has a positive effect on cerebral neuronal activity and cognitive function;^{16,17} however, these studies investigated only the long-term effects of LEV, and changes in cerebral glucose metabolism were not assessed.

In this study, we investigated the influence of LEV on cerebral glucose metabolism and background EEG 1 month after beginning treatment. We also tried to identify meaningful differences between good and poor responders at an early stage of LEV administration. To evaluate the *in vivo* effect of LEV on cerebral glucose metabolism and background EEG, we recruited patients with focal epilepsy who had never taken LEV. 18F-fluorodeoxyglucose (FDG) positron emission tomography (PET) and EEG scans were performed at baseline and after 1 month of the medication regimen.

Method

Subjects and study design

Twenty-three patients with diagnosed focal epilepsy who had never taken LEV (allowed for LEV monotherapy or add-on therapy to one or two existing AEDs) were recruited from our epilepsy clinic between January 2010 and January 2012. This study was approved by the local ethics committee, and all patients provided written informed consent to participate in the study prior to the administration of LEV in accordance with the guidelines of St Mary's Hospital in Seoul, Republic of Korea.

Each patient received the same dosage of LEV for 1 month, which began with a titration period over the initial week (250 mg per day for the first 3 days and 250 mg twice daily for 4 days). After the first week, the LEV dose was increased to 500 mg twice daily and continued for 23 consecutive days, with two exceptions (patients 2 and 7 continued treatment for 28 days).

On the first visit, enrolled patients were subjected to clinical examination (neurological exam, clinical history, seizure frequency, the Quality of Life in Epilepsy questionnaire [QOLIE-31], and Symptom Checklist-90 Revised [SCL-90-R]) and FDG PET and EEG acquisition, and LEV administration was subsequently initiated. One month after the initial assessment, the subjects returned for a follow-up visit to determine the initial therapeutic efficacy, incidence of adverse effects, and compliance during initial LEV treatment. After controlled administration of LEV (1,000 mg/day) during the first month, the dosage of LEV for each patient was adjusted freely according to the patient's condition and continued for an additional 3 months. Four months after treatment initiation (on the third visit), the final LEV dosage, seizure frequency, incidence of adverse effects, and drug compliance were recorded.

The participants were divided into two groups according to their LEV response 1 month after treatment initiation. The good response group included patients with >50% reduction in seizure frequency relative to the baseline seizure frequency (as assessed during the 3 months prior to commencing LEV treatment). Conversely, the poor response group was defined as having a decline in seizure frequency of <50%.

FDG PET imaging procedure

FDG PET images were obtained at baseline and after 1 month of LEV administration using ECAT HR plus and Biograph scanners (Siemens Medical System, Inc, Hoffman Estates, IL, USA) while the subjects rested comfortably with their eyes closed and ears plugged in a darkened and quiet room.

The patients were instructed to fast for at least 6 hours prior to the scans and were given an intravenous injection of FDG (7–10 mCi; 214.6–444 MBq). All PET scans were performed more than 24 hours after the patient's last seizure. The images were reconstructed using ordered subset expectation maximization with 16 subsets and six iteration reconstruction algorithms (Shepp filter with a cut-off frequency of 0.5 cycles per projection element). The reconstructed PET images consisted of a 128×128 image matrix with a pixel size of 1.72×1.72 mm and an inter-slice distance of 2.43 mm.

PET data analysis

All FDG PET data were analyzed for any changes in specific regional glucose metabolism with Statistical Parametric Mapping (SPM) 8 (The Wellcome Trust Centre for Neuroimaging, Institute of Neurology, University College London, London, UK) in conjunction with MATLAB (Mathworks, Inc, Natick, MA, USA) software. The reconstructed PET data were reformatted into the Analyze format. A direct between-subjects statistical analysis was impossible because of the different shapes and sizes of the subjects' brains. Therefore, the images obtained from each patient were spatially transformed to a generic SPM PET template to remove anatomical variability and then smoothed with a full width at half maximum 16 mm Gaussian kernel to increase the signal-to-noise ratio. Then, paired *t*-tests were used to perform group comparisons on the PET images before and after LEV use. The results were displayed on a healthy subject's magnetic resonance imaging template after spatial normalization.

EEG recording

EEG recordings were obtained before and after initiation of LEV medication. For each patient, EEG data were recorded for at least 30 minutes with a digital EEG machine (Nicolet Biomedical, Madison, WI, USA) at 250 Hz using 19 channels based on the international 10–20 system (Fp1, Fp2, F3, F4, C3, C4, P3, P4, F7, F8, T3, T4, T5, T6, O1, O2, Fz, Cz, and Pz).

All EEG data were analyzed using standardized low-resolution brain electromagnetic tomography (sLORETA) in which 20 samplings of 2-second epochs with no epileptiform discharge and no artifacts were selected from segments of the waking state recordings. A sLORETA software package⁸ was used to analyze the following EEG frequency domains: delta (1–4 Hz), theta (4–8 Hz), alpha1 (8–10.5 Hz), alpha2 (10.5–13 Hz), beta1 (13–22 Hz), and beta2 (22–30 Hz). The sLORETA employed a three-spherical head model based on the Montreal Neurological Institute 152 template¹⁸ with the

three-dimensional solution space restricted to cortical gray matter, as determined by the probabilistic Talairach atlas.¹⁹ The standard electrode positions on the Montreal Neurological Institute 152 scalp were obtained from a previous study,²⁰ and the sLORETA solution space consisted of 6,239 voxels at a 5 mm spatial resolution in the three-dimensional plane. The power current density for each voxel was normalized by averaging the power current density across all voxels and all frequencies.

For the statistical analyses, the localization of the differences in relative current density power between the independent groups in the six frequency bands was assessed using paired *t*-tests. The nonparametric randomization method²¹ was used to calculate multiple comparison-corrected critical probability threshold values based on empirical probability distributions.⁸

QOLIE-31 and SCL-90-R

All statistical analyses comparing the two groups were performed using SPSS software (version 12.0 for windows; SPSS Inc, Chicago, IL, USA), and all demographic variables were analyzed using either a Chi-square test, Fisher's exact test, or Student's *t*-test, as appropriate. Comparison of QOLIE-31 and SCL-90-R scores measured at baseline and after 1 month of LEV administration were performed using paired *t*-tests for the good and poor responder groups.

Results

Demographics and baseline characteristics

At the end of the study, only 12 of the 23 patients recruited completed the full 4-month LEV treatment course and the pre- and posttreatment evaluations. Four participants dropped out due to noncompliance, two were excluded because of poor FDG PET image quality, and five patients discontinued LEV because of a lack of efficacy (three) or problems with tolerability (two).

The good response group included seven patients (five females, two males; mean age, 40.4±15.7 years; baseline seizure frequency, 14.5±20.9 per month) and the poor response group included five patients (one female, four males; mean age, 37.2±10.6 years; baseline seizure frequency, 8.5±10.8 per month). The mean durations that patients had been affected by seizures were 12.9±13.7 years and 6.8±6.7 years in the good and poor responder groups, respectively. There were no statistically significant differences between the groups for any of these variables (Table 1).

Table 1 Demographic data and clinical outcome of patients exposed to LEV

Patient	Dx	Age	Sex	Age at seizure onset (years)	Duration (years)	Number of AEDs before LEV	Number of concomitant AEDs	Seizure frequency (number/month)			Final LEV dose (4 months after, mg/day)
								Before LEV*	1 month after LEV	4 months after LEV	
G1	B FLE	14	F	12	2	0	0	60	1	0.67	1,000
G2	L TLE	53	M	46	7	2	1	4	0	0.33	1,500
G3	L TLE	56	F	15	41	3	2	3	0	0.33	1,500
G4	R FLE	40	F	30	10	0	0	2	0	0	1,000
G5	R TLE	47	M	42	5	0	0	0.67	0	0	1,000
G6	B TLE	49	F	44	5	0	0	1.67	0	0	1,000
G7	L PLE	24	F	4	20	4	2	30	3	3	1,000
Avg		40.4±15.7		27.6±16.5	12.9±13.7	1.3±1.7	0.7±0.9	14.5±20.9	0.6±1.1	0.6±1.0	1,142.9±225.9
P1	L TLE	33	F	30	3	1	1	5.36	8	2.67	2,000
P2	Reflex epilepsy	52	M	51	1	0	0	2	2	1	1,500
P3	B TLE	31	M	26	5	3	2	3.21	2	1.67	2,000
P4	B TLE	26	M	8	18	4	1	2	6	2	2,250
P5	B FLE	44	M	37	7	3	2	30	60	15	2,000
Avg		37.2±10.6		30.4±14.1	6.8±6.7	2.2±1.6	1.2±0.7	8.5±10.8	15.6±22.3	4.5±5.3	1,950±245.0
P-value		0.068		0.774	0.337	0.374	0.373	0.569	0.228	0.188	0.001

Note: *Seizure frequency during the last 3 months prior to LEV administration.

Abbreviations: AEDs, antiepileptic drugs; Avg, average; B, bilateral; Dx, diagnosis; FLE, frontal lobe epilepsy; G, patient of good response group; L, left; LEV, levetiracetam; P, patient of poor response group; PLE, parietal lobe epilepsy; R, right; TLE, temporal lobe epilepsy.

Clinical outcome after LEV medication

Of the 12 patients, five (41.7%) achieved a seizure-free state with 1,000 mg/day 1 month after initiating LEV treatment. Patients 1 and 7 showed a >50% seizure reduction during this period. Moreover, among the seven patients in the good response group, three (42.9%) remained in a seizure-free state throughout the subsequent 3 months. However, three of the five patients (60%) in the poor response group exhibited seizure aggravation in the first month after LEV treatment initiation. After dosage adjustment, three patients showed a 50% decrease in seizure frequency. Age, age at seizure onset, epilepsy duration, baseline seizure frequency, and number of concomitant AEDs did not differ between the responder and nonresponder groups. The final LEV dosage (4 months after LEV initiation) was significantly higher in the nonresponders (1,950±245.0 mg) than in the responders (1,142.9±225.9 mg) ($P=0.001$).

SPM analysis of FDG PET images

In the good response group, SPM analysis revealed a significant increase ($P<0.005$, uncorrected) in regional cerebral glucose metabolism in the bilateral frontal, caudate, and parietal areas following LEV administration (Figure 1; Table 2). There were no regions with significantly reduced glucose metabolism. In the poor response group, PET analysis did not reveal any significant changes in cerebral glucose metabolism after LEV treatment.

Differences in sLORETA activity

In the good response group, there was a statistically significant ($P<0.05$) increase in the beta1 (13–22 Hz) relative power current density in the right medial frontal area (Figure 2A) and a significant ($P<0.05$) decrease in the delta (1–4 Hz) relative power current density in the medial parietal area (precuneus, Figure 2B) after LEV administration (Table 3). However, there were no significant changes in the poor responders.

QOLIE-31 and SCL-90-R

In the comparison of QOLIE-31 scores measured at baseline and 1 month after LEV initiation, no statistically significant changes were found in either group. Similarly, no differences in SCL-90-R scores were found between the two groups after LEV administration.

Discussion

We investigated the early effects of LEV administration on cerebral glucose metabolism and background EEG and the differences between good and poor responders. Furthermore, we evaluated the feasibility of predicting patients' long-term responses to LEV based on these early changes. To the best of our knowledge, this is the first study to characterize differences in glucose metabolism and EEG activity during the early stages of LEV treatment in patients with focal epilepsy. Our results demonstrate that short-term LEV treatment

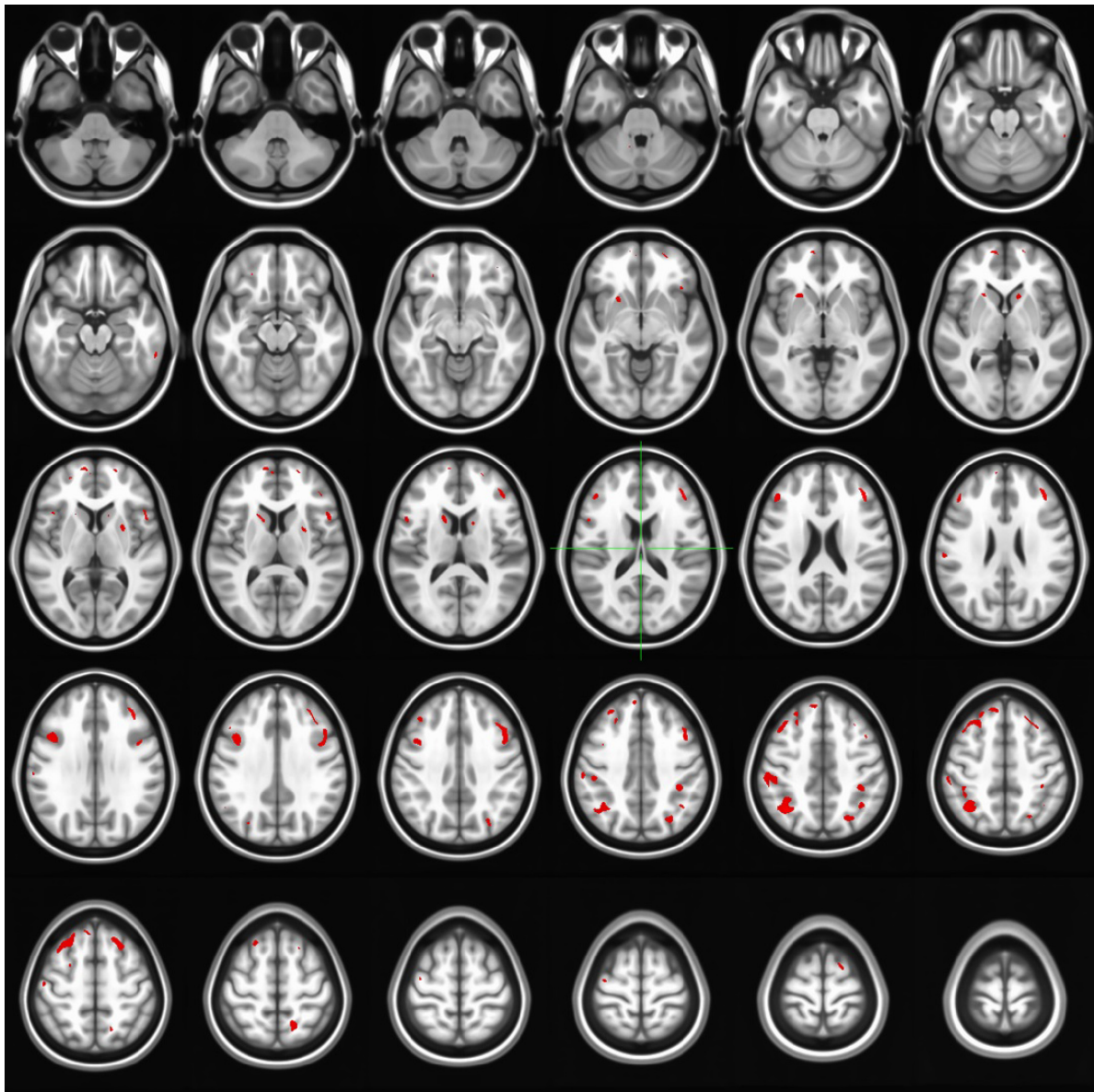


Figure 1 The brain regions showing increased glucose metabolism after levetiracetam administration in patients of the good response group (bilateral frontal, caudate nuclei, and parietal areas) assessed by SPM8.

Note: Threshold: $P < 0.005$, uncorrected for extent.

Abbreviation: SPM8, Statistical Parametric Mapping (version 8).

enhances glucose metabolism and background EEG activity in good responders. These patients showed increased glucose metabolism in the frontal and parietal regions, increased beta1 activity in the right medial frontal region, and decreased delta activity in the bilateral parietal regions. There were no statistically significant changes in the poor responder group.

A number of studies have investigated the effects of AEDs on cerebral glucose metabolism and background EEG. Traditional AEDs such as phenytoin, carbamazepine, and phenobarbital may increase and decrease the power of slow and fast frequencies on background EEG, respectively.^{22,23} Carbamazepine increases the power of theta and delta bands

but decreases the power of alpha bands.²³ Valproate depresses cerebral glucose metabolism to a greater degree than does either carbamazepine or phenytoin, but to a lesser extent than observed for phenobarbital.⁴ These reports suggest that traditional AEDs have a negative influence on cerebral glucose metabolism and background EEG.

Newer AEDs possess different pharmacokinetic and action mechanisms, so these drugs may have different effects on cerebral function relative to traditional AEDs. FDG PET analyses have revealed that topiramate reduces glucose metabolism in the corpus callosum and thalamus,²⁴ while lamotrigine decreases glucose metabolism in the cortico-striato-entorhinal area.⁵ These

Table 2 The brain regions with increased glucose metabolism after LEV administration in patients of good response group

Brain region			Side	Cluster size	Talairach coordinate [†]			Peak		
					X	Y	Z	T value	Uncorrected P-value	
Frontal lobe	Precentral gyrus	Gray matter	Left	277	-51	13	7	5.03	0.001	
	Precentral gyrus	White matter	Left	192	-41	-14	34	4.48	0.001	
	Precentral gyrus	White matter	Left	823	-53	-5	23	4.75	0.001	
	Superior frontal gyrus	White matter	Left	364	-17	8	64	4.9	0.001	
	Superior frontal gyrus	White matter	Left	796	-23	23	50	4.71	0.001	
	Middle frontal gyrus	White matter	Left	900	-38	8	54	4.28	0.002	
	Middle frontal gyrus	White matter	Left	652	-40	38	18	6.84	<0.001	
	Inferior frontal gyrus	White matter	Left	1,006	-42	7	27	4.89	0.001	
	Inferior frontal gyrus	White matter	Left	57	-38	23	-8	4.21	0.002	
	Precentral gyrus	Gray matter	Right	640	38	-9	58	5.36	0.001	
	Precentral gyrus	White matter	Right	441	38	4	35	4.81	0.001	
	Precuneus	White matter	Right	297	14	-61	52	4.04	0.002	
	Superior frontal gyrus	Gray matter	Right	43	24	53	2	4.41	0.002	
	Superior frontal gyrus	White matter	Right	814	23	18	55	4.21	0.002	
	Superior frontal gyrus	White matter	Right	48	19	8	65	4.26	0.002	
	Superior frontal gyrus	White matter	Right	31	12	59	-1	5.69	<0.001	
	Superior frontal gyrus	White matter	Right	503	21	30	46	5.12	0.001	
	Middle frontal gyrus	White matter	Right	111	31	40	37	4.62	0.001	
	Middle frontal gyrus	White matter	Right	867	47	34	19	4.87	0.001	
	Middle frontal gyrus	White matter	Right	648	43	23	42	5.32	0.001	
Inferior frontal gyrus	White matter	Right	354	50	12	14	6.41	<0.001		
Parietal lobe	Inferior parietal lobule	Gray matter	Left	33	-44	-31	30	4.19	0.002	
	Postcentral gyrus	Gray matter	Left	788	-53	-21	49	4.09	0.002	
	Supramarginal gyrus	Gray matter	Left	251	-63	-45	34	5.54	<0.001	
	Inferior parietal lobule	White matter	Left	1,728	-41	-52	39	4.52	0.001	
	Postcentral gyrus	White matter	Left	821	-61	-20	26	4.61	0.001	
	Precuneus	White matter	Left	161	-17	-52	55	4.76	0.001	
	Superior parietal lobule	White matter	Left	754	-25	-64	45	4.93	0.001	
	Inferior parietal lobule	White matter	Left	1,167	-37	-34	40	6.06	<0.001	
	Precuneus	White matter	Right	378	30	-68	35	4.33	0.002	
	Precuneus	White matter	Right	156	16	-51	56	4.74	0.001	
	Postcentral gyrus	White matter	Right	168	40	-34	44	3.96	0.004	
Temporal lobe	Middle temporal gyrus	Gray matter	Right	254	59	-41	-15	5.33	<0.001	
	Sub-lobar	Caudate	Gray matter	Left	439	-13	17	4	5.83	<0.001
		Lentiform nucleus	Gray matter	Left	183	-22	5	10	5.58	<0.001
		Caudate	Gray matter	Right	251	13	17	2	5.11	0.001
		Lentiform nucleus	Gray matter	Right	180	24	8	3	4.76	0.001

Notes: [†]Coordinates are defined in the stereotactic space of Talairach (in mm). X represents the lateral distance from the midline (positive, right); Y, the anteroposterior distance from the anterior commissure (positive, anterior); and Z, the rostrocaudal distance from the bicommissural plane (positive, rostral).

Abbreviation: LEV, levetiracetam.

differences are assumed to be related to the drugs' mechanisms of action. EEG studies have revealed that prolonged gabapentin administration in healthy participants induced EEG slowing and causes a decrease in the peak frequency of the posterior alpha rhythm.²⁵ Topiramate also causes a slowing of EEG signals,^{26,27} whereas lamotrigine increases power in the beta band but does not cause significant changes in the relative power of the delta, theta, or alpha band.²⁸

Interestingly, the FDG PET and EEG spectral changes were region-specific in the good response group, and the changes were similar in the PET and EEG analyses.

Previous studies have reported that such region-specific changes are correlated with specific changes in cognition. An FDG PET analysis found that relative hypometabolism in the left thalamus and temporal area were correlated with diminished performance on a verbal memory task.²⁹ Topiramate reduces glucose metabolism in the thalamus and corpus callosum, which is associated with executive dysfunction.⁵

The present findings suggest that the short-term (1 month) LEV administration enhances cerebral glucose metabolism and background EEG activity in the frontal and

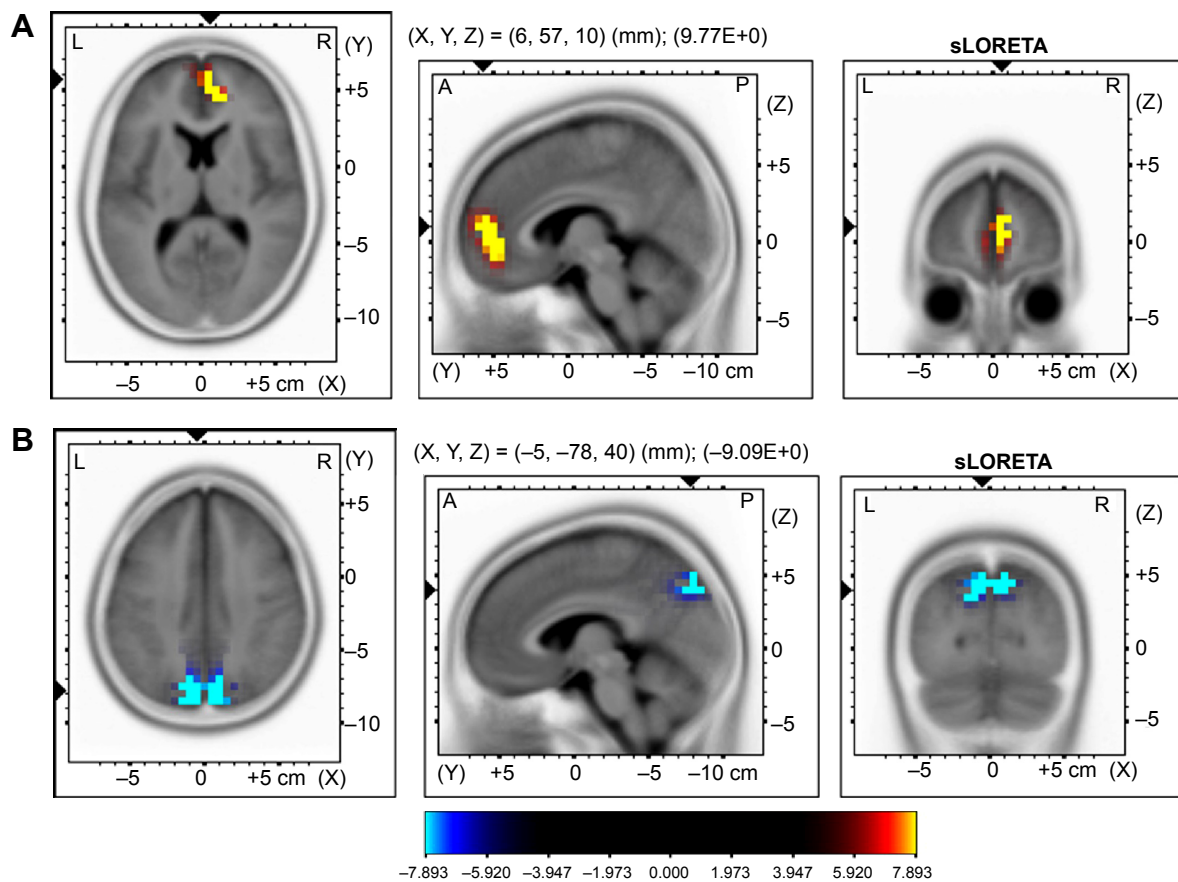


Figure 2 sLORETA images.

Notes: (A) Voxel-wise statistical nonparametric map of sLORETA images demonstrate the statistically significant increase in the beta1 relative power current density after LEV administration in the right medial frontal area. (B) In addition, there is significant decrease of the delta relative power current density in the superomedial parietal area. Yellow and blue color indicates voxels with significantly increased or decreased ($P < 0.05$) activity, respectively.

Abbreviations: LEV, levetiracetam; sLORETA, standardized low-resolution brain electromagnetic tomography.

parietal areas, similar to what has been reported in previous studies. One recent report stated that LEV therapy increases the 22–30 Hz band of EEG background activity in the bilateral anterior cingulate and left parahippocampal gyri of patients with refractory partial epilepsy, and that this change is associated with improvements in verbal memory and executive function.¹⁶ LEV has also been shown to decrease delta and theta power in the frontopolar and anterior areas, increase alpha2 in diffuse areas, and increase beta2 in the left temporal area.¹⁷

In the present study, good responders continued to exhibit an excellent response to LEV 3 months following treatment, which suggests that it may be possible to predict the long-term effectiveness of LEV in individual patients based on 18F-FDG PET scans or background EEG patterns at an early stage of treatment.

The SCL-90-R is a widely used self-assessment tool that assesses the subjective symptom burden of patients with various neuropsychiatric disorders such as epilepsy.³⁰ Quality of life (QOL) is an important measure in epilepsy,

Table 3 Brain coordinates indicating regions showing significant increase (right medial frontal area) of beta1 and decrease (precuneus) of the delta relative power current density after LEV administration

Brain lobe	Region	BA	MNI coordinates			Talairach coordinates			t-score
			X	Y	Z	X	Y	Z	
Rt parietal	Precuneus	7	10	-80	45	10	-75	45	-10.89
Lt parietal	Precuneus	19	-10	-85	40	-10	-81	41	-10.99
Rt frontal	Medial frontal gyrus	10	10	50	10	10	49	7	12.11

Note: All brain regions were thresholded at $P < 0.05$.

Abbreviations: BA, Brodmann’s area; LEV, levetiracetam; Lt, left; MNI, Montreal Neurological Institute; Rt, right.

a chronic, devastating condition that is unique due to its multidimensional effects on psychosocial functioning.³¹ A recent study of psychiatric symptoms and QOL in Korean patients with drug-refractory epilepsy receiving LEV reported improved psychiatric symptoms and QOL that were not related to seizure freedom after LEV. However, adverse events such as abnormal behavior, insomnia, anxiety, nervousness, and depression led to temporary LEV discontinuation by 5% of patients.³² Although we found no association between seizure reduction and an improvement in psychiatric symptoms or QOL, the study sample was very small, so the lack of a significant correlation may have been due to a type II error.

There are several limitations to this study. First, the current study was performed in a relatively small number of subjects. Second, the data were obtained from a nonhomogeneous population of de novo patients and those refractory to previous AEDs without an appropriate control group. A larger sample size and comparison with normal control subjects will provide additional insight into the effects of LEV on cerebral function. Third, the 3-month follow-up duration may not have been sufficient to determine the long-term effects of LEV treatment. Lastly, because no intensive neuropsychological testing was performed, the neurobiological findings from this study cannot be correlated with specific cognitive function domains.

In conclusion, differences in the effects of LEV can be identified at an early stage of treatment in good and poor responders. These findings suggest that LEV-induced changes in glucose metabolism and EEG spectral activity may be differentiated based on initial responsiveness to the drug as early as 1 month after medication initiation. Thus, FDG PET scans and EEG data may be useful prognostic markers of the antiseizure effects of LEV or, at least, indicate the epiphenomena of changes in glucose metabolism and EEG frequency following seizure reduction by LEV. The results of this study indicate that LEV has positive effects in good responder patients and no negative effects in poor responder patients in terms of cerebral glucose metabolism and background EEG. Further studies with larger samples are warranted.

Acknowledgments

This investigation was supported by UCB Korea Co, Ltd. Gratitude is expressed to UCB Korea Co, Ltd as well as the investigators and to their sites that provided patients for the study. We confirm that we have read the Journal's position on issues involved in ethical publication and affirm that this report is consistent with those guidelines.

Disclosure

The authors report no conflicts of interest in this work.

References

- Loring DW, Marino S, Meador KJ. Neuropsychological and behavioral effects of antiepilepsy drugs. *Neuropsychol Rev*. 2007;17(4):413–425.
- Ortinski P, Meador KJ. Cognitive side effects of antiepileptic drugs. *Epilepsy Behav*. 2004;5 Suppl 1:S60–S65.
- Witt JA, Alpherts W, Helmstaedter C. Computerized neuropsychological testing in epilepsy: overview of available tools. *Seizure*. 2013;22(6):416–423.
- Leiderman DB, Balish M, Bromfield EB, Theodore WH. Effect of valproate on human cerebral glucose metabolism. *Epilepsia*. 1991;32(3):417–422.
- Joo EY, Tae WS, Hong SB. Regional effects of lamotrigine on cerebral glucose metabolism in idiopathic generalized epilepsy. *Arch Neurol*. 2006;63(9):1282–1286.
- Joo EY, Tae WS, Han SJ, et al. The Effect of Topiramate and Lamotrigine on Cerebral Glucose Metabolism in Idiopathic Generalized Epilepsy Patients. *Journal of Korean Epilepsy Society*. 2005;9(2):129–136.
- Pascual-Marqui RD, Michel CM, Lehmann D. Low resolution electromagnetic tomography: a new method for localizing electrical activity in the brain. *Int J Psychophysiol*. 1994;18(1):49–65.
- Pascual-Marqui RD. Standardized low-resolution brain electromagnetic tomography (sLORETA): technical details. *Methods Find Exp Clin Pharmacol*. 2002;24 Suppl D:5–12.
- Doppelmayr M, Klimesch W, Stadler W, Pöllhuber D, Heine C. EEG alpha power and intelligence. *Intelligence*. 2002;30(3):289–302.
- Doppelmayr M, Klimesch W, Sauseng P, Hödlmoser K, Stadler W, Hanslmayr S. Intelligence related differences in EEG-bandpower. *Neurosci Lett*. 2005;381(3):309–313.
- Smith ME, Gevins A, McEvoy LK, Meador KJ, Ray PG, Gilliam F. Distinct cognitive neurophysiologic profiles for lamotrigine and topiramate. *Epilepsia*. 2006;47(4):695–703.
- Theodore WH, Bromfield E, Onorati L. The effect of carbamazepine on cerebral glucose metabolism. *Ann Neurol*. 1989;25(5):516–520.
- Park SP, Kwon SH. Cognitive effects of antiepileptic drugs. *J Clin Neurol*. 2008;4(3):99–106.
- Wright C, Downing J, Mungall D, et al. Clinical pharmacology and pharmacokinetics of levetiracetam. *Front Neurol*. 2013;4:192.
- Helmstaedter C, Witt JA. The effects of levetiracetam on cognition: a non-interventional surveillance study. *Epilepsy Behav*. 2008;13(4):642–649.
- Park SP, Kwon OY. Increased EEG current-source density in the high Beta frequency band induced by levetiracetam adjunctive therapy in refractory partial epilepsy. *J Clin Neurol*. 2009;5(4):178–185.
- Cho JR, Koo DL, Joo EY, et al. Effect of levetiracetam monotherapy on background EEG activity and cognition in drug-naïve epilepsy patients. *Clin Neurophysiol*. 2012;123(5):883–891.
- Mazziotta J, Toga A, Evans A, et al. A probabilistic atlas and reference system for the human brain: International Consortium for Brain Mapping (ICBM). *Philos Trans R Soc Lond B Biol Sci*. 2001;356(1412):1293–1322.
- Lancaster JL, Woldorff MG, Parsons LM, et al. Automated Talairach atlas labels for functional brain mapping. *Hum Brain Mapp*. 2000;10(3):120–131.
- Jurcak V, Tsuzuki D, Dan I. 10/20, 10/10, and 10/5 systems revisited: their validity as relative head-surface-based positioning systems. *Neuroimage*. 2007;34(4):1600–1611.
- Nichols TE, Holmes AP. Nonparametric permutation tests for functional neuroimaging: a primer with examples. *Hum Brain Mapp*. 2002;15(1):1–25.

22. Duncan JS, Smith SJ, Forster A, Shorvon SD, Trimble MR. Effects of the removal of phenytoin, carbamazepine, and valproate on the electroencephalogram. *Epilepsia*. 1989;30(5):590–596.
23. Besser R, Hornung K, Theisohn M, Rothacher G, Krämer G. EEG changes in patients during the introduction of carbamazepine. *Electroencephalogr Clin Neurophysiol*. 1992;83(1):19–23.
24. Joo EY, Tae WS, Kim JH, Han SJ, Kim BT, Hong SB. Effect of Topiramate on Cerebral Glucose Metabolism. *Journal of Korean Epilepsy Society*. 2004;8(2):116–122.
25. Salinsky MC, Binder LM, Oken BS, Storzbach D, Aron CR, Dodrill CB. Effects of gabapentin and carbamazepine on the EEG and cognition in healthy volunteers. *Epilepsia*. 2002;43(5):482–490.
26. Neufeld MY, Kogan E, Chistik V, Korczyn AD. Comparison of the effects of vigabatrin, lamotrigine, and topiramate on quantitative EEGs in patients with epilepsy. *Clin Neuropharmacol*. 1999;22(2):80–86.
27. Mecarelli O, Piacenti A, Pulitano P, et al. Clinical and electroencephalographic effects of topiramate in patients with epilepsy and healthy volunteers. *Clin Neuropharmacol*. 2001;24(5):284–289.
28. Marciani MG, Stanzione P, Mattia D, et al. Lamotrigine add-on therapy in focal epilepsy: electroencephalographic and neuropsychological evaluation. *Clin Neuropharmacol*. 1998;21(1):41–47.
29. Rausch R, Henry TR, Ary CM, Engel J Jr, Mazziotta J. Asymmetric interictal glucose hypometabolism and cognitive performance in epileptic patients. *Arch Neurol*. 1994;51(2):139–144.
30. Wiebe S, Rose K, Derry P, McLachlan R. Outcome assessment in epilepsy: comparative responsiveness of quality of life and psychosocial instruments. *Epilepsia*. 1997;38(4):430–438.
31. Cramer JA, Perrine K, Devinsky O, Bryant-Comstock L, Meador K, Hermann B. Development and cross-cultural translations of a 31-item quality of life in epilepsy inventory. *Epilepsia*. 1998;39(1):81–88.
32. Lee JJ, Song HS, Hwang YH, Lee HW, Suh CK, Park SP. Psychiatric symptoms and quality of life in patients with drug-refractory epilepsy receiving adjunctive levetiracetam therapy. *J Clin Neurol*. 2011;7(3):128–136.

Neuropsychiatric Disease and Treatment

Dovepress

Publish your work in this journal

Neuropsychiatric Disease and Treatment is an international, peer-reviewed journal of clinical therapeutics and pharmacology focusing on concise rapid reporting of clinical or pre-clinical studies on a range of neuropsychiatric and neurological disorders. This journal is indexed on PubMed Central, the 'PsycINFO' database and CAS,

and is the official journal of The International Neuropsychiatric Association (INA). The manuscript management system is completely online and includes a very quick and fair peer-review system, which is all easy to use. Visit <http://www.dovepress.com/testimonials.php> to read real quotes from published authors.

Submit your manuscript here: <http://www.dovepress.com/neuropsychiatric-disease-and-treatment-journal>