

Full length article

Annealing effect on plastic flow in nanocrystalline CoCrFeMnNi high-entropy alloy: A nanomechanical analysis



Dong-Hyun Lee ^a, Jung-A Lee ^a, Yakai Zhao ^b, Zhaoping Lu ^c, Jin-Yoo Suh ^d, Ju-Young Kim ^e, Upadrasta Ramamurty ^f, Megumi Kawasaki ^{g, **}, Terence G. Langdon ^h, Jae-il Jang ^{a, *}

^a Division of Materials Science and Engineering, Hanyang University, Seoul, 04763, Republic of Korea

^b School of Materials Science and Engineering, Beijing Institute of Technology, Beijing, 100081, People's Republic of China

^c State Key Laboratory for Advance Metals and Materials, University of Science and Technology Beijing, Beijing, 10083, People's Republic of China

^d High Temperature Energy Materials Research Center, Korea Institute of Science and Technology, Seoul, 02792, Republic of Korea

^e School of Materials Science and Engineering, Ulsan National Institute of Science and Technology, Ulsan, 44919, Republic of Korea

^f Department of Materials Engineering, Indian Institute of Science, Bangalore, 560012, India

^g School of Mechanical, Industrial & Manufacturing Engineering, Oregon State University, Corvallis, OR 97331-6001, USA

^h Materials Research Group, Faculty of Engineering and the Environment, University of Southampton, Southampton, SO17 1BJ, UK

ARTICLE INFO

Article history:

Received 20 June 2017

Received in revised form

26 August 2017

Accepted 28 August 2017

Available online 28 August 2017

Keywords:

High-entropy alloy

Nanocrystalline metal

Annealing effect

Constitutive behavior

ABSTRACT

The influence of annealing on the constitutive stress-strain response of nanocrystalline (nc) CoCrFeMnNi high-entropy alloy (HEA) was investigated through a series of nanoindentation experiments using five different three-sided pyramidal indenters. The nc HEA, produced by high-pressure torsion (HPT), was subjected to annealing at 450 °C for 1 and 10 h. Microstructural analysis using transmission electron microscopy (TEM) showed that three different nano-scale precipitates (NiMn-, FeCo-, and Co-rich phases) form in the primary single-phase matrix of nc HEA after annealing. The strain-dependent plastic flow response of nc HEA pre- and post-annealing was estimated using the indentation strain and constraint factor, revealing a significant strain softening in nc HEA, which becomes pronounced after annealing. TEM analysis of the deformed material underneath the indenter suggests that the plastic deformation aids in the dissolution of the annealing-induced intermetallic precipitates, which could be the mechanism for the pronounced softening. The dissolution mechanism was rationalized by the destabilization of precipitates during plastic deformation due to the increase in interface energy.

© 2017 Acta Materialia Inc. Published by Elsevier Ltd. All rights reserved.

1. Introduction

High-entropy alloys (HEAs), a new class of alloys defined for practical purposes as multicomponent alloys containing five or more elements in (near-)equal atomic percent, exhibit excellent mechanical properties over a wide range of temperatures (from elevated to cryogenic temperatures) [1–5]. Recently, it has been reported that those properties of HEAs can be further enhanced in a substantial manner through significant grain refinement, which can be easily achieved by severe plastic deformation (SPD) processing methods such as equal-channel angular pressing (ECAP) [6] and high-pressure torsion (HPT) [7]. It is possible to obtain

nanocrystalline (nc) structure (average grain size, $d < 100$ nm [8–12]) in HEAs by subjecting them to HPT, which paves the way for exploiting synergy between HEA and nc alloys [13–16].

Recently, the issue of phase stability in HEAs during thermal treatments has been examined closely. It was observed that secondary phases can form in the HEA matrix, when they are annealed at the temperatures below ~800 °C [14,17–20]. Since grain boundaries (GBs), especially non-equilibrium GBs in HPT-processed materials, can serve as energetically favorable nucleation sites for the formation of new phases, the annealing-induced formation of new phases is expected to be accelerated in nc HEAs due to the large fraction of GBs in them. Indeed, Schuh et al. [14] reported that the decomposition of the primary matrix phase occurs in nc CoCrFeMnNi HEA in an accelerated manner (i.e., in 5 min at 450 °C). They also observed a significant hardness increase and concomitant ductility loss in the nc HEA after annealing, which suggests that further investigation of the annealing effects may be required for

* Corresponding author.

** Corresponding author.

E-mail addresses: megumi.kawasaki@oregonstate.edu (M. Kawasaki), jjjang@hanyang.ac.kr (J.-i. Jang).

elevated temperature applications of nc HEAs. Nevertheless, the annealing effect on the constitutive stress-strain behavior in the plastic regime (i.e., strain hardening or softening), which is crucial from the potential applications point of view, has not yet been studied systematically due to the difficulties in conventional mechanical testing. Vickers hardness tests provide only hardness corresponding to a specific single indentation strain, and tensile tests using micro-sized samples cannot represent the properties of only nc HEA since there is a marked gradient of microstructure in HPT-processed disk samples and only the edge regions of the disks (that can hardly cover the whole gauge part of tensile specimen) show nc structures.

This difficulty may be overcome by performing nanoindentation tests that can estimate various mechanical properties by analyzing load-displacement (P - h) curve recorded during the experiment [21–24]. In addition to being a simple and easy procedure, nanoindentation offers many advantages; the important one being that it requires only small volumes of test material. Thus, the tests have been extensively performed to explore mechanical properties of local microstructures [25,26]. Recently, Maier-Kiener et al. [27] performed such experiments on nc CoCrFeMnNi HEA annealed at various temperatures and investigated the influence of annealing on hardness and elastic modulus, from which the usefulness of the nanoindentation technique in the mechanical analysis of nc HEAs was established [27]. Additionally, such tests also allow for the exploration of the strain-dependent plastic flow behavior. There are two possible ways for achieving this goal. The first one is by using a spherical tip. Since this tip does not have a geometrical self-similarity, stress σ and strain ϵ underneath the indenter can increase with the applied load. Although it has a strong merit that elastic deformation and yield behavior can be obtained during indentation, plastic deformation at large strains cannot be achieved for the following two practical issues. (1) The depth to which spherical shape can be maintained is limited due to the limitation of the tip manufacturing process. (2) The widely used Hertz theory for the analysis of spherical indentation is developed on the assumption that the tip geometry is a “paraboloid of revolution” that can be considered as a “sphere” and hence is applicable only for shallow depths of penetration. Another way of σ - ϵ estimation is using a series of sharp (typically, three-sided pyramidal) indenters having different indenter angles. Generally, sharper indenters induce larger elasto-plastic strains in the material [23,28–30], and indentations made with different angles lead to different levels of plastic strain, thereby allowing a systematic evaluation of the effects of the imposed strain.

Accordingly, here we explored the influence of the annealing on the strain-dependent plastic flow, and thus on the constitutive behavior of HPT-processed nc CoCrFeMnNi through a series of nanoindentation experiments using five different three-sided pyramidal indenters having different values for the centerline-to-face angle, ψ . In addition, the tests under the identical conditions were also carried out on the coarse-grained (cg) HEA (i.e., as-cast HEA) for comparison purposes. The results revealed that the nature of plastic flow in nc CoCrFeMnNi HEA is significantly affected by the annealing treatment.

2. Experimental

The equiatomic CoCrFeMnNi HEA examined in this work was prepared by arc-melting a mixture of pure metals (purity >99 wt.%) in a Ti-gettered high-purity Ar atmosphere. The as-cast alloy was cut and electrical-discharge machined into 10 mm diameter, 0.8 mm thick disks. They were subjected to HPT at room temperature with a pressure of 6.0 GPa at 1 rpm for a total of 2 turns. Fig. 1 shows the microstructures of the as-cast and HPT-processed HEA

samples. It is evident that HPT induces a substantial reduction in average grain size d from $\sim 40 \mu\text{m}$ to $\sim 40 \text{nm}$, which confirms earlier observations that HPT process can achieve significant grain refinement in the CoCrFeMnNi HEA [13–15]. Subsequent to HPT, some samples were subjected to annealing at 450 °C (at which hardness was found to be the maximum in the previous isochronal annealing study [14]) for 1 and 10 h (hereafter, designated HPT+1A and HPT+10A samples, respectively). For comparison purposes, the as-cast sample was also examined, and thus there are four different samples that were tested here; as-cast, HPT, HPT + 1A, and HPT + 10A samples. The surfaces of the specimens were mechanically polished with fine SiC papers (grit number up to 2000) and subsequently with 0.05 μm colloidal silica. Then, surfaces were vibration-polished for 24 h with 0.02 μm colloidal silica using Vibromet 2 (Buehler, Lake Bluff, IL) to remove any possible surface damage induced during prior polishing.

Nanoindentation experiments were performed at the edge regions (within 0.3 mm from the edge) of the HPT disks using a Nanoindenter-XP (formerly MTS; now Keysight, Santa Rosa, CA) with five different three-sided pyramidal indenters having a centerline-to-face angle ψ of 35.3° (cube-corner indenter), 50°, 65.3° (Berkovich indenter), 75°, and 85°. The samples were loaded to a maximum load, P_{max} , of 100 mN under constant strain rate, $(dP/dt)/P$ (where P is indentation load), of 0.05 /s. More than 20 tests were performed for each condition. The hardness impressions were

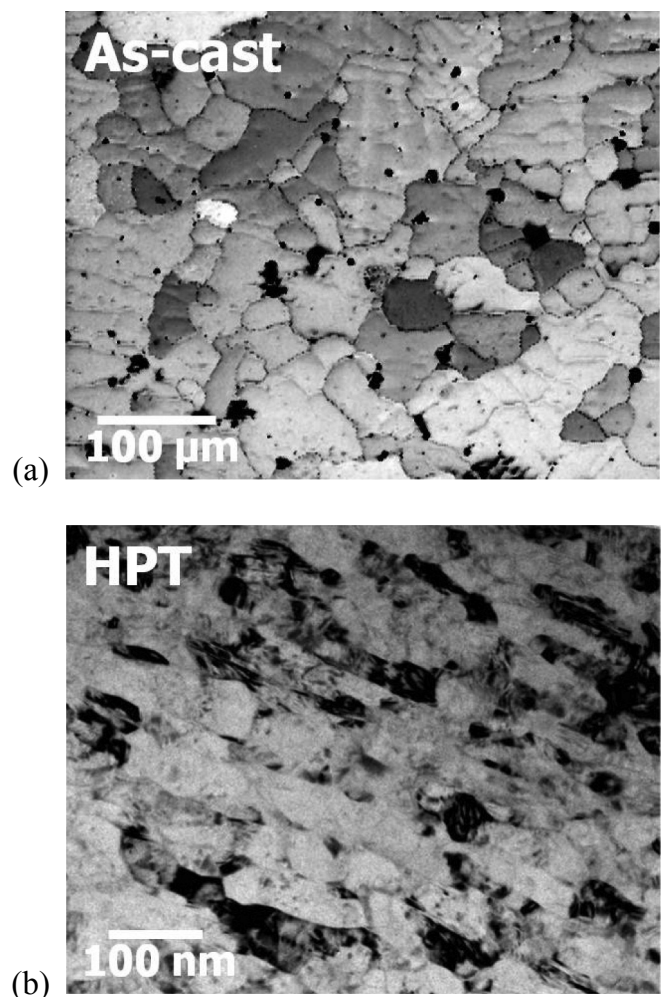


Fig. 1. Typical microstructures of (a) as-cast and (b) HPT-processed CoCrFeMnNi HEA.

imaged using atomic force microscopy (AFM; XE-100, Park Systems, Suwon, Korea).

Annealing-induced microstructural changes were examined using transmission electron microscopy (TEM; Talos F200 \times , FEI Co., Hillsboro, OR). To prepare cross-sectional TEM samples, focused ion beam (FIB) milling was performed with a Nova 200 NanoLab (FEI Co., Hillsboro, OR). During TEM analysis, element mapping was performed using energy dispersive X-ray spectroscopy (EDS).

3. Results

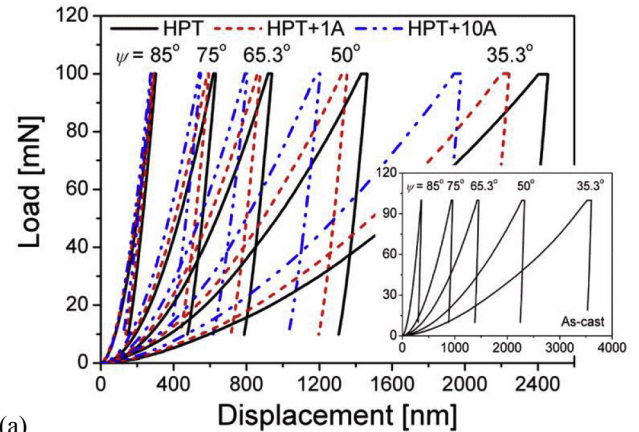
3.1. Nanoindentation hardness variation

Representative P – h curves of the HPT, HPT + 1A, and HPT + 10A samples recorded during nanoindentations with five indenters with different ψ are displayed in Fig. 2a. Since the recorded displacement range for the as-cast sample differs significantly from those processed by HPT, its P – h plots are displayed separately in the inset of Fig. 2a. It is clear that the displacement at the peak load, h_{\max} , decreases with increasing ψ for all four samples. Importantly, h_{\max} for a given ψ decreases in the sequence of as-cast, HPT, HPT + 1A, and HPT + 10A.

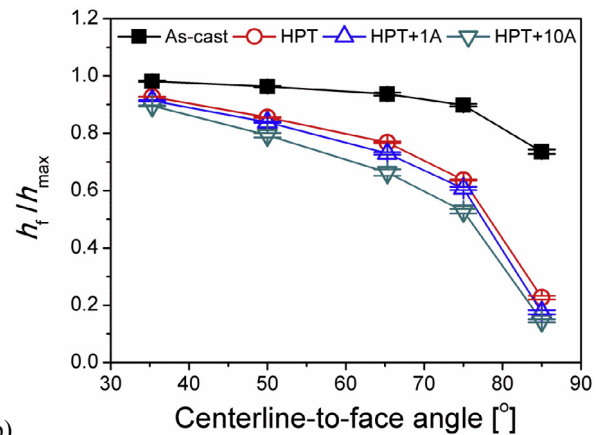
The ratio of the residual displacement after unloading, h_f , to h_{\max} is a useful indicator of the relative portion of the plastic deformation in the total elasto-plastic deformation that occurs during indentation. Fig. 2b summarizes the variations in h_f/h_{\max} with ψ for all samples. For a given ψ , the h_f/h_{\max} values obtained from three HPT-processed samples are much lower than for the as-cast sample, implying that plasticity in the former is less pronounced than in the latter. Importantly, the value of h_f/h_{\max} increases with decreasing ψ , indicating that indeed a higher level of plasticity is produced with a sharper indenter. For $\psi = 35.3^\circ$ (the sharpest tip), all four samples exhibit high h_f/h_{\max} values (> 0.9), indicating that the portion of plasticity is much higher than that of elasticity. For $\psi = 85^\circ$ (the least sharp tip), a clear difference can be found between the as-cast and other samples; while the as-cast sample continues to show relatively high values of h_f/h_{\max} (~ 0.74), the three HPT-processed samples show very low h_f/h_{\max} values around 0.2. These results suggest that, for $\psi = 85^\circ$, the portion of elasticity is much higher than that of plasticity in HPT-processed samples whereas plasticity still prevails over elasticity in the as-cast sample.

The most popular procedure for estimating the hardness by only nanoindentation P – h curve analysis is the Oliver-Pharr (O-P) method [21]. Nevertheless, here we did not adopt the O-P method. This is mainly because the correlation constant β in the O-P method (which relates stiffness S to contact area A and thus must be known for determining the area function and hence the hardness) is known only for the commonly used Berkovich indenter (as a constant of 1.034 [21]), but not for other indenters although some effort has been made [31].

To overcome this difficulty and directly obtain the hardness H by $H = P_{\max}/A$, we measured the impression areas A from a large number of AFM images. Fig. 3 displays representative AFM micrographs of the indents. In the HPT, HPT + 1A, HPT + 10A samples, significant material pile-ups around the indents are seen for $\psi \leq 50^\circ$, and they become more pronounced for $\psi = 35.3^\circ$, which is similar to previous reports for other metals and alloys [29,31]. The large pile-up is more obvious in Fig. 4, which shows the AFM images and line scan data across the indents. Such pile-up can induce an overestimation of the calculated H in the O-P method [29,31], and the ψ -dependent pile-up complicates the analysis of the relation between H and ψ . Such pile-up issue is fully circumvented in the present study since H was obtained directly from the measured A .



(a)



(b)

Fig. 2. Results of the nanoindentation experiments with indenters having various angles: (a) Typical load-displacement curves for HPT-processed samples (with inset image showing the curves for as-cast sample); (b) variations in the ratio of the final depth to maximum displacement as a function of indenter angle.

Fig. 5 summarizes the variations in H as a function of ψ for all four samples. Two features are noteworthy. First, for a given ψ , the H value is largely enhanced by the HPT process and further increases upon annealing. Second, for all samples, H varies with reducing ψ (i.e., increasing indentation strain), but the trend is different between as-cast and three HPT-processed samples. In the as-cast sample, H increases linearly with decreasing ψ . In HPT-processed samples, in contrast, H is a maximum at 65.3° and decreases at lower and higher angles. This variation in H with ψ is related to the constitutive behavior of each material, which is discussed later.

3.2. Microstructural changes

To observe the annealing-induced microstructural change, TEM analyses were performed on the HPT and HPT + 10A samples. Fig. 6a shows scanning transmission electron microscopy (STEM) image of the HPT sample, which exhibits nc structure with an average grain size d of ~ 40 nm. To illustrate the chemical composition, EDS elemental mapping was performed for an identical area where the STEM image of Fig. 6a was taken. The EDS maps of the HPT-processed sample (Fig. 6b–g) indicate a homogeneous distributions of constituent elements without any clear segregation or clustering. This result is consistent with previous atom probe tomography study [14] reporting that the HPT-processed CoCr-FeMnNi HEA is a single-phase solid solution. Therefore, it is reasonable to conclude that strengthening by HPT in Fig. 5 is mainly

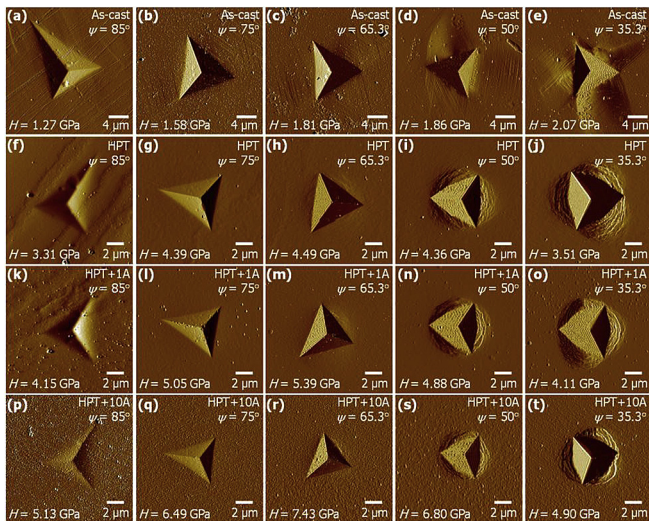


Fig. 3. Representative AFM micrographs of hardness impressions; (a–e) for as-cast; (f–j) for HPT; (k–o) for HPT + 1A; (p–t) for HPT + 10A.

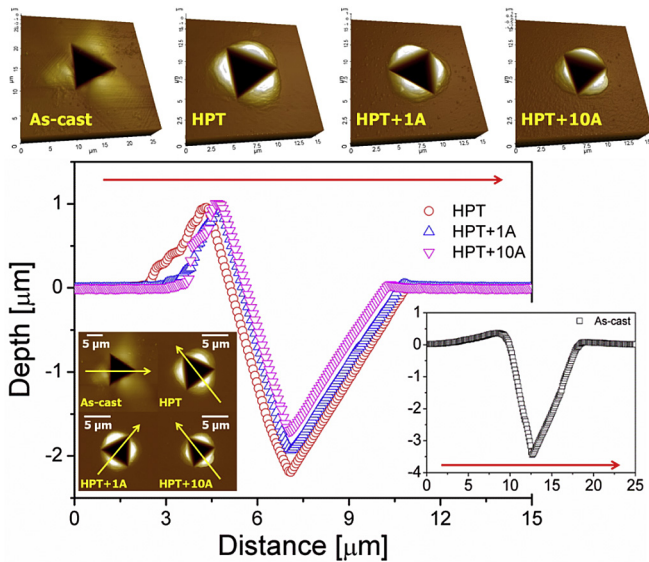


Fig. 4. Representative examples of AFM images and surface profile data for cube-corner indentations.

due to the grain refinement.

Fig. 7 shows a representative STEM image of HPT + 10A sample and the corresponding EDS element maps for the same area. It is seen in Fig. 7a that HEA + 10A sample has a slightly larger d than HEA sample but nevertheless it exhibits nc structure with d of ~ 60 nm. The most noticeable microstructural evolution induced by annealing is the nano-scale chemical decomposition (Fig. 7b–g), that is, the solid solution in the nc HEA becomes unstable and decomposes into multiple phases after 10 h annealing. As shown in the EDS maps (especially Fig. 7g), three new phases were observed; i.e., a phase rich in Ni and Mn, a phase only with Cr, and a phase rich in Fe and Co (hereafter, to be referred to as NiMn, Cr, and FeCo phases, respectively). Table 1 summarizes the average chemical compositions that were obtained from more than three EDS point spectra for each phase. These three different phases were also reported for the coarse-grained (cg) CoCrFeMnNi HEA after long-term annealing at 500 °C for 500 days [18]. The chemical compositions of

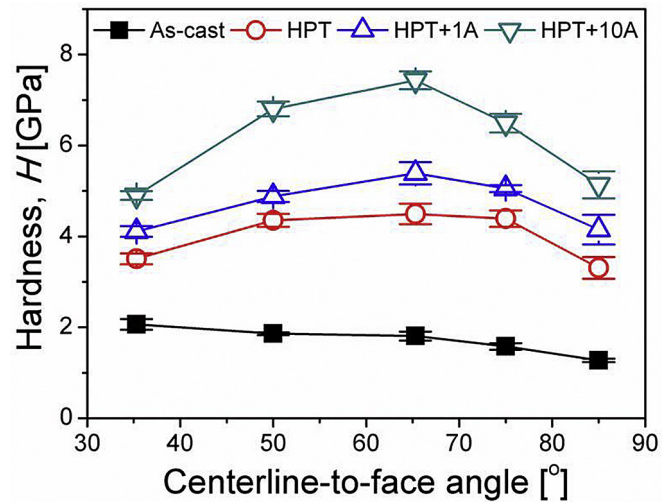


Fig. 5. Variations in nanoindentation hardness H as a function of indenter angle ψ .

the phases reported in that study are similar to those in Table 1, and the crystal structures of the new phases were identified as body-centered cubic (bcc) solid solution for the Cr particles, $L1_0$ structure for the NiMn phases, and B2 structure for the FeCo phases. Although the particles in Fig. 7g seem to be identical to those in the annealed cg HEA [18], there are two major differences. First, in the annealed cg HEA, the new phases preferentially precipitate along the grain boundaries (GBs) that can be energetically preferred nucleation sites for the phases [32,33]. In annealed nc HEA of the present study, the new phases have almost the same size as the matrix grain and are random in terms of the location where they precipitated as seen in Fig. 7g. This difference is somewhat expected given the large portion of GBs in nc HEA. Second, for the precipitation of the new phases, the annealing of cg HEA [18] took much longer time (500 days) than for the nc HEA in this study. This difference is also rationalized by the large portion of GBs that can enhance the diffusion kinetics. In consideration of these possible reasons for the difference, we conclude that the Cr, NiMn, and FeCo phases observed in this study are the same as those observed previously (i.e., bcc phase, $L1_0$ phase, and B2 phase, respectively).

Since the presence of these phases are the main difference in the “observed” microstructure between HPT and HPT+10A samples, one may expect that they play a critical role in the annealing-induced hardening in nc HEA, as suggested earlier by Schuh et al. [14]. As shown in Fig. 7g, the sizes of the new phases are similar to (or even larger than) d of the matrix phase. Thus, the strengthening mechanism by these new phases is comparable to that seen in composites rather than particle (precipitation) hardening; that is, such phases having intermetallic character (especially, NiMn and FeCo phases) would be much harder than the matrix phase and thus increase the global strength of the nc HEA [14].

4. Discussion

4.1. Constitutive behavior

As mentioned earlier, plastic flow behavior of the indented samples can be estimated by converting the H vs. ψ data in Fig. 5 into stress vs. strain plots [23,24,29]. For this, the following two aspects need recognition. First, the characteristic (or indentation) strain ϵ_{char} underneath a sharp indenter is independent of h due to its geometrical self-similarity. Second, ϵ_{char} of a conical indenter having a half-cone angle θ is determined as [24,34].

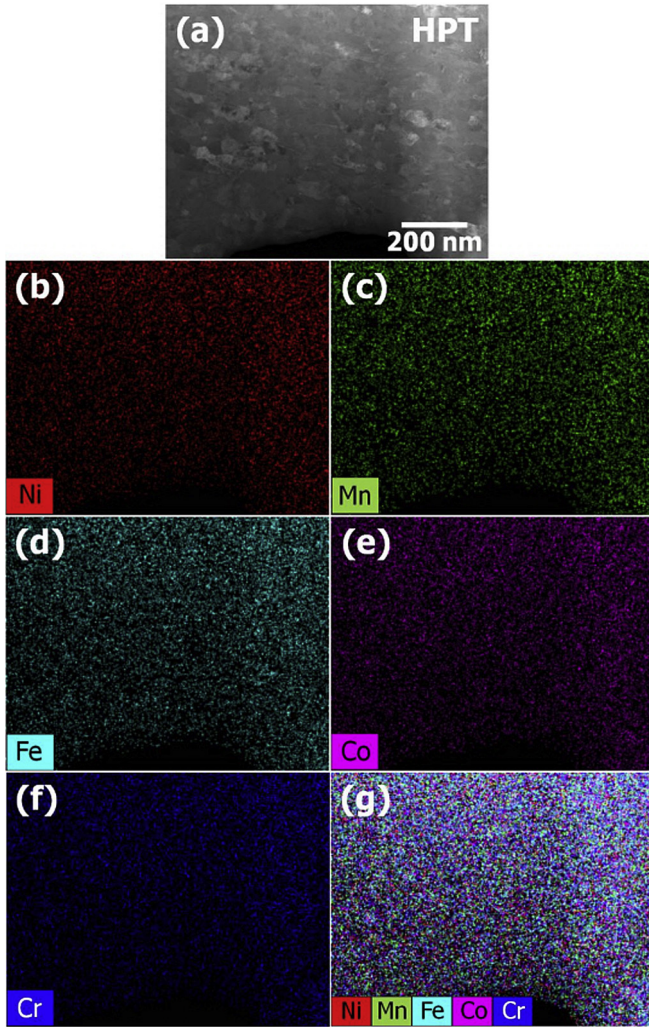


Fig. 6. STEM image and corresponding elemental distribution maps of only HPT-processed sample.

$$\epsilon_{\text{char}} = 0.2 \cdot \tan(\pi - \theta) = 0.2 \cdot \cot \theta \quad (1)$$

For the case that a cone with θ and a three-sided pyramid with ψ produce the same area-to-depth ratio, $\cot \theta$ of Eq. (1) can be obtained as:

$$\cot \theta = \left(\sqrt{\frac{3\sqrt{3}}{\pi} \cdot \tan \psi} \right)^{-1} \quad (2)$$

which leads to ϵ_{char} for $\psi = 85, 75, 65.3, 50,$ and 35.3° as 0.014, 0.042, 0.072, 0.13, and 0.22, respectively.

Next, the measured H values can be converted into corresponding flow stresses, σ_f , by the well-known empirical relationship originally suggested by Tabor [35], i.e., $H = C_\theta \cdot \sigma_f$, where C_θ is the constraint factor. Although C_θ is often considered as 2.7 or 3 for the fully plastic regime of indentation, it would be a strong function of ψ in the elasto-plastic regime [34]. In this regime, Johnson [34] estimated C_θ as

$$C_\theta = \frac{H}{\sigma_f} = \frac{2}{3} \left[2 + \ln \left(\frac{1}{3} \frac{E \cdot \cot \theta}{\sigma_y} \right) \right] \quad (3)$$

where E is elastic modulus and σ_y is yield strength. Note that this

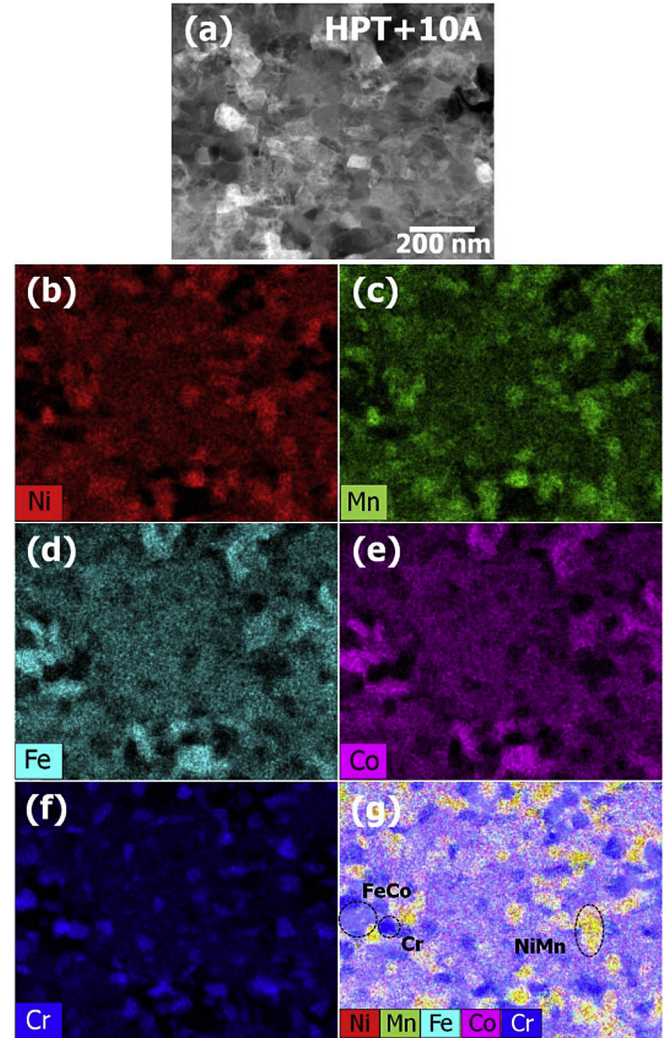


Fig. 7. STEM image and corresponding elemental distribution maps of HPT+10A sample.

Table 1

Chemical compositions (at.%) of the phases existing in undeformed HPT + 10A sample.

Phase	Co [at.%]	Cr [at.%]	Fe [at.%]	Mn [at.%]	Ni [at.%]
NiMn	4.7 ± 1.1	2.3 ± 1.8	2.3 ± 1.4	40.6 ± 2.0	50.0 ± 2.3
Cr	4.3 ± 0.9	81.2 ± 3.2	8.2 ± 0.3	4.3 ± 0.8	2.0 ± 1.7
FeCo	41.6 ± 3.0	1.8 ± 0.8	41.1 ± 3.6	9.0 ± 2.4	6.6 ± 4.1

equation is based on Johnson's expanding cavity model in which the volume conservation of material (i.e., Poisson's ratio is 0.5) is assumed and flow is assumed to be pressure-insensitive [34]. Eq. (3) shows that C_θ can be determined not only by $\cot \theta$ (of Eq. (2)) but also by material properties such as E and σ_y . If elastic properties do not vary significantly during the HPT process and subsequent annealing, the value of E of the cg (as-cast) HEA (~200 GPa [36,37]) can be adopted in Eq. (3) for all nc HEA (HPT, HPT + 1A, and HPT + 10A) samples. However, information about the variation in σ_y during HPT process and subsequent annealing is still required for estimating the C_θ of HPT, HPT + 1A, and HPT + 10A samples by Eq. (3). While the σ_y for cg (as-cast) and nc (HPT) samples has been well documented (~0.2 GPa [38] and ~1.4 GPa [14,19], respectively), the σ_y for annealed nc samples are unknown. Therefore, we attempted

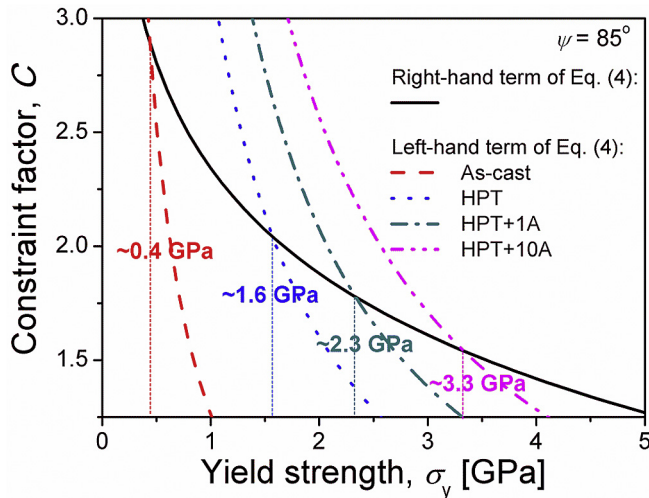


Fig. 8. An example presenting how to determine the yield strength and the obtained results for each sample.

to estimate σ_y of all samples by using the nanoindentation data. Since $\psi = 85^\circ$ can apply substantially low h_f/h_{\max} (especially for nc samples) and $\varepsilon_{\text{char}}$ (~ 0.014), it is reasonable to assume that the corresponding σ_f is close to σ_y . Thus, by substituting H and θ values for $\psi = 85^\circ$ into Eq. (3), the middle term of it becomes H/σ_y , which then can be written as:

$$\frac{H}{\sigma_y} = \frac{2}{3} \left[2 + \ln \left(\frac{1}{3} \frac{E \cdot \cot \theta}{\sigma_y} \right) \right] \quad (\text{for } \psi = 85^\circ) \quad (4)$$

Here, the elastic properties of all samples in the right-hand term are those of the as-cast sample (as mentioned above), and H of each sample in the left-hand term can be directly obtained from nanoindentation tests with $\psi = 85^\circ$. To determine the σ_y values for each specimen by solving Eq. (4), an arbitrary value of σ_y was put into both the left- and right-hand term. Then, it was varied until the value of the left- and right-hand terms became the same, at which the corresponding σ_y was determined as the σ_y of each sample. Fig. 8 shows this procedure and the results obtained; i.e., σ_y for as-cast, HPT, HPT + 1A, and HPT + 10A were determined as ~ 0.4 , ~ 1.6 , ~ 2.3 , and ~ 3.3 GPa, respectively. The values of σ_y for as-cast and HPT samples estimated from Eq. (4) are in a good agreement with the literature data [14,19,38] (in consideration of indentation size effect, ISE [39], that can explain the small discrepancy), which implies that the estimated σ_y of HPT + 1A and HPT + 10A samples may also be reasonable.

With the estimated σ_y , values of C_θ for each condition can be determined by using Eq. (3), and are summarized in Table 2. Based on the assumption that the elastic-plastic regime ends and a fully plastic regime begins at $C_\theta = 3$ [34], if the calculated C_θ is higher than 3, we adopted $C_\theta = 3$ instead of the calculated value in Table 2. With these values of C_θ , now H can be converted into σ_f . The variations in σ_f with $\varepsilon_{\text{char}}$ for all samples are plotted in Fig. 9, where the tensile test data for the as-cast HEA obtained by Wu et al. [38] is

Table 2
Calculated constrain factor (C_θ) values.

	$\psi = 85^\circ$	$\psi = 75^\circ$	$\psi = 65.3^\circ$	$\psi = 50^\circ$	$\psi = 35.3^\circ$
As-cast	2.9	3.6	4.0	4.4	4.7
HPT	2.0	2.8	3.1	3.5	3.9
HPT + 1A	1.8	2.5	2.9	3.3	3.6
HPT + 10A	1.5	2.3	2.6	3.0	3.4

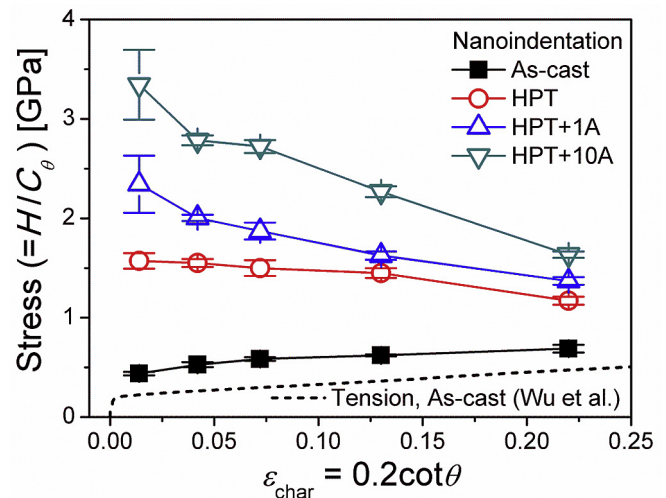


Fig. 9. Estimated stress-strain relations derived from nanoindentation data.

also shown for comparison purposes. In the case of the as-cast sample, although there is a slight difference in stress (possibly due to the ISE [39] that is not considered in the procedure we have used here), the estimated stress-strain relation and its hardening behavior are in reasonably good agreement with the results from tensile testing. By extension, the estimated stress-strain relations of the three nc HEAs (HPT, HPT + 1A, and HPT + 10A) in Fig. 9 can be considered representative.

4.2. Strain softening and its possible mechanisms

In Fig. 9, all nc HEA samples (HPT, HPT + 1A, and HPT + 10A) exhibit strain softening behavior, which is opposite to the work hardening of the cg (as-cast) sample. Strain softening phenomena have been frequently observed in tensile and compressive tests of nc and ultrafine-grained (ufg) metals and alloys [40–43]. Recently, this softening behavior was also reported for HPT-processed nc CoCuFeNi HEA [16]. For conventional nc metals, a variety of possible mechanisms such as extensive dynamic recovery [44,45], dynamic recrystallization [46–48], and the existence of residual internal stress in GBs [49] have been proposed to explain this softening behavior, although there remains controversy over the mechanism. In the case of nc HEA, which mechanism is the most predominant for the strain softening is unclear as yet and requires further analysis in the future, but it is anticipated that similar mechanisms to those for conventional nc metals may still be valid.

The most interesting feature related with strain softening in Fig. 9 is that the softening behavior becomes more pronounced as the annealing time increases, i.e., the HPT + 10A sample exhibits the largest amount of softening whereas the HPT sample shows the smallest one. This indicates that in comparison of only HPT-processed sample (which may be governed by proposed softening mechanisms of other nc metals and alloys [44–49]), an additional mechanism may be at work in the strain softening of annealed HPT samples. To gain insights into the possible additional mechanism of annealed HPT samples, the change in microstructure of annealed HPT sample with the applied $\varepsilon_{\text{char}}$ was investigated. Fig. 10a and b shows the microstructures of HPT + 10A sample underneath the indentation produced with Berkovich ($\psi = 65.3^\circ$) and cube-corner tip ($\psi = 35.3^\circ$), respectively. The subsurface regions also exhibit the annealing-induced precipitates (Cr, NiMn, and FeCo) as observed in the undeformed region of Fig. 7g. The volume fraction of each phase is listed in Table 3. The fraction of the precipitates was reduced by

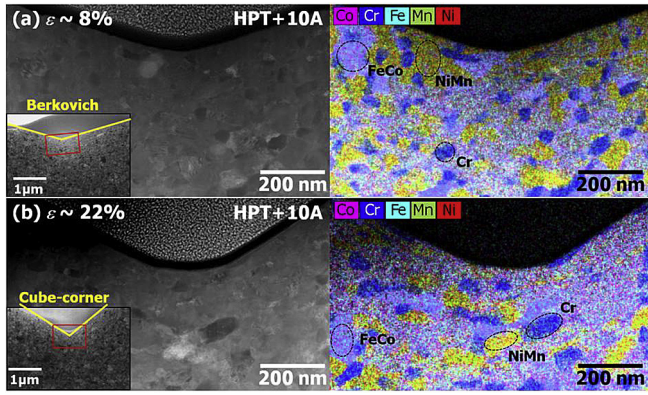


Fig. 10. Cross-sectional TEM micrographs and corresponding EDS maps for the sub-surface region underneath the indenter (for HPT + 10A): (a) Berkovich and (b) cube-corner indenter.

Table 3

Volume fractions of NiMn, FeCo and Cr phases underneath the indenter in HPT + 10A sample.

	Volume fraction (%)		
	NiMn	FeCo	Cr
$\psi = 65.3^\circ$ ($\epsilon \sim 0.08$)	20.4	13.3	10.2
$\psi = 35.3^\circ$ ($\epsilon \sim 0.22$)	12.5	7.1	8.4

almost one-half as ϵ_{char} increases from 0.08 (Berkovich) to 0.22 (cube-corner), which implies that the second phases were dissolved due to the extensive plastic deformation. This led us to the conclusion that more pronounced strain softening behavior in annealed nc HEA sample may be attributed to the deformation-assisted dissolution of the precipitates. It is noteworthy that some extent of indenter tip bluntness is observed for the cube-corner indentations (Fig. 10b). This tip bluntness is inevitable in a sharp indenter, since imperfections are created during indenter production and, more importantly, the indenter is progressively worn out as it is used. Although the tip bluntness may affect the measured results (especially for a shallow-depth indentation) [50], such influence was not significant here due to the large indentation depth ($h_{\text{max}} \sim 2000$ nm for cube-corner indenter, see Fig. 2a) and thus very small portion of the bluntness-affected region within the total plastic zone underneath the indenter.

The deformation-induced dissolution of a second phase has been reported in many metallic systems and was frequently explained by recourse to the thermodynamics of the metastable phases [51–58] according to which, plastic deformation could lead to the destabilization of second phases. To evaluate the thermodynamic stability of the intermetallic NiMn and FeCo phases in the annealed HEA at room temperature, the “stress-independent” activation energy for the dissolution, $\Delta G_{\text{diss},0}$ ($=\Delta G_{\text{HEA}} - \Delta G_{\text{int}}$), was calculated. The Gibbs free energy for the formation of HEA, ΔG_{HEA} , is given as

$$\Delta G_{\text{HEA}} = \Delta H_{\text{HEA}} - T\Delta S_{\text{HEA}} \quad (5)$$

where ΔH and ΔS are the enthalpy and entropy of mixing, respectively, and T is the absolute temperature. For the HEA examined in this study, the values of ΔH_{HEA} and ΔS_{HEA} are ~ -4.8 kJ/mol and ~ 13.4 J/mol K, respectively [1]. Then, at $T = 298$ K, Eq. (5) yields ΔG_{HEA} as -8.8 kJ/mol. Similarly, the value of the Gibbs free energy for the formation of intermetallic phase, ΔG_{int} , can be calculated. Since its mixing entropy ΔS_{int} can be assumed as 0 for

ordered intermetallics, ΔG_{int} becomes the same as the mixing enthalpy ΔH_{int} [59]. The values of ΔH_{int} for NiMn and FeCo intermetallics are reported as -12.2 [59,60] and -10.1 kJ/mol [61], respectively, which are adopted as ΔG_{int} in this study. With these values, $\Delta G_{\text{diss},0}$ values for NiMn phase and FeCo phase are determined as ~ 3.4 and ~ 1.3 kJ/mol, respectively, which are within the range reported for the activation barrier for solid state transformation (0.3 – 3 kJ/mol [58,62]) including martensitic transformation that also can be induced by plastic deformation. Furthermore, Languillaume et al. [51] calculated the value of $\Delta G_{\text{diss},0}$ for cementite in pearlitic steel as ~ 15 kJ/mol, and reported that (at least partial) dissolution of cementite occurred during cold wire drawing. All these observations suggest that the dissolution of the secondary intermetallic phases in the HEA can occur at room temperature, and it may become easier during plastic deformation.

It was often suggested that the deformation-assisted destabilization of intermetallic particles is attributed to the increasing matrix-particle interface energy due to the dislocation accumulation during plastic deformation [51–53,56,63]. It is apparent from Eq. (1) and Fig. 2b that a sharper indenter imposes a higher level of plastic deformation, and thus induces higher interface energy. Especially, the contribution of interface energy to the particle dissolution is more pronounced for a harder phase, since the density of geometrically necessary dislocations (GNDs) near the interface between soft matrix and hard phase is dependent on strain gradients across the interface [64–66]. This scenario is consistent with the experimental results that the dissolutions of NiMn and FeCo phases are more pronounced than that of Cr phase (see Fig. 10 and Table 3). For nc metals, however, the capacity of dislocation accumulation is not expected to be sufficiently high due to their extremely small grain size [10,11,67]. Therefore, in this study, deformation-assisted dissolution cannot be exclusively explained only by dislocations accumulation at the matrix/particle interfaces.

Another contribution to the dissolution can be envisaged by considering the friction at the matrix-particle interface. Ivanisenko et al. [54] proposed that the flow of a soft matrix around harder particles can impose high strain energy on the interface due to the friction at the interface. In this regard, the friction at the interface during nanoindentation may play a role for increasing interface energy, and it will be enhanced for a sharper indentation.

In addition, in order for the thermodynamic non-equilibrium of secondary phases to be a driving force for their dissolution, a substantial atomic diffusion should occur during the deformation. In the present case, the high fraction of GBs in annealed nc HEA can become channels for migration of atoms. Note that the large pressure gradient underneath the indenter can significantly increase the diffusivity [68,69]. In this respect, the larger pressure gradient underneath a sharper indenter may further enhance the diffusivity, resulting in the promotion of the second phase dissolution. However, additional experiments and simulations are required to provide a full picture of the deformation-assisted particle dissolution mechanism in annealed nc HEAs.

5. Conclusion

In the present study, annealing effects on the stress-strain behavior of HPT-processed CoCrFeMnNi HEAs were systematically investigated through nanoindentation experiments with five different three-sided pyramidal indenters. Nanohardness measurements show that the hardness of nc HEA increases further upon annealing at 450 °C. The annealing-induced hardening is mainly due to the formation of a nanostructured multiphase microstructure, consisting of NiMn-, FeCo-, and Cr-rich phases embedded in the matrix. By using the concepts of characteristic

strain and constraint factor, the strain-dependent plastic flow of nc HEAs was successfully obtained from hardness vs. indenter angle data. Considerable strain softening was revealed in nc HEA samples, which became pronounced as annealing time increased. In the TEM analysis, the volume fractions of NiMn- and FeCo-rich intermetallic phases were reduced by almost one-half as indentation strain increased from 0.08 to 0.22, suggesting that the deformation-assisted dissolution of the precipitates may be the reason for the additional strain softening in annealed nc HEA. The deformation-assisted destabilization of precipitates can be rationalized in consideration of the increase in the interface energy, which in turn can be explained by recourse to the dislocation accumulation and friction at the matrix/particle interfaces.

Acknowledgements

The work at Hanyang University was supported by the National Research Foundation of Korea (NRF) grants funded by the Ministry of Science and ICT (No. 2015R1A5A1037627 and No. 2017R1A2B4012255). JYS would like to thank the support from the Convergence Agenda Program (CAP) of the Korea Research Council of Fundamental Science and Technology (CAP-11-05-KRISS).

References

- [1] Y. Zhang, T.T. Zuo, Z. Tang, M.C. Gao, K.A. Dahmen, P.K. Liaw, Z.P. Lu, Microstructures and properties of high-entropy alloys, *Prog. Mater. Sci.* 61 (2014) 1–93.
- [2] D.B. Miracle, O.N. Senkov, A critical review of high entropy alloys and related concepts, *Acta Mater.* 122 (2017) 448–511.
- [3] F. Otto, A. Dlouhý, C. Somsen, H. Bei, G. Eggeler, E.P. George, The influences of temperature and microstructure on the tensile properties of a CoCrFeMnNi high-entropy alloy, *Acta Mater.* 61 (2013) 5743–5755.
- [4] B. Gludovatz, A. Hohenwarter, D. Catoor, E.H. Chang, E.P. George, R.O. Ritchie, A fracture-resistant high-entropy alloy for cryogenic applications, *Science* 345 (2014) 1153–1158.
- [5] Y. Zhao, D.-H. Lee, M.-Y. Seok, J.-A. Lee, M.P. Phaniraj, J.-Y. Suh, H.-Y. Ha, J.-Y. Kim, U. Ramamurty, J.-I. Jang, Resistance of CoCrFeMnNi high-entropy alloy to gaseous hydrogen embrittlement, *Scr. Mater.* 135 (2017) 54–58.
- [6] R.Z. Valiev, T.G. Langdon, Principles of equal-channel angular pressing as a processing tool for grain refinement, *Prog. Mater. Sci.* 51 (2006) 881–981.
- [7] A.P. Zhilyaev, T.G. Langdon, Using high-pressure torsion for metal processing: fundamentals and applications, *Prog. Mater. Sci.* 53 (2008) 893–979.
- [8] H. Gleiter, Nanocrystalline materials, *Prog. Mater. Sci.* 33 (1989) 223–315.
- [9] R. Valiev, Nanostructuring of metals by severe plastic deformation for advanced properties, *Nat. Mater.* 3 (2004) 511–516.
- [10] M.A. Meyers, A. Mishra, D.J. Benson, Mechanical properties of nanocrystalline materials, *Prog. Mater. Sci.* 51 (2006) 427–556.
- [11] M. Dao, L. Lu, R.J. Asaro, J.T.M. De Hosson, E. Ma, Toward a quantitative understanding of mechanical behavior of nanocrystalline metals, *Acta Mater.* 55 (2007) 4041–4065.
- [12] T. Zhu, J. Li, Ultra-strength materials, *Prog. Mater. Sci.* 55 (2010) 710–757.
- [13] D.-H. Lee, I.-C. Chi, M.-Y. Seok, J. He, Z. Lu, J.-Y. Suh, M. Kawasaki, T.G. Langdon, J.I. Jang, Nanomechanical behavior and structural stability of a nanocrystalline CoCrFeNiMn high-entropy alloy processed by high-pressure torsion, *J. Mater. Res.* 30 (2015) 2804–2815.
- [14] B. Schuh, F.M. Martin, B. Völker, E.P. George, H. Clemens, R. Pippan, A. Hohenwarter, Mechanical properties, microstructure and thermal stability of a nanocrystalline CoCrFeMnNi high-entropy alloy after severe plastic deformation, *Acta Mater.* 96 (2015) 258–268.
- [15] D.-H. Lee, M.-Y. Seok, Y. Zhao, I.-C. Choi, J. He, Z. Lu, J.-Y. Suh, U. Ramamurty, M. Kawasaki, T.G. Langdon, J.-I. Jang, Spherical nanoindentation creep behavior of nanocrystalline and coarse-grained CoCrFeMnNi high-entropy alloys, *Acta Mater.* 109 (2016) 314–322.
- [16] R. Zheng, J. Chen, W. Xiao, C. Ma, Microstructure and tensile properties of nanocrystalline $(\text{FeNiCoCu})_{1-x}\text{Ti}_x\text{Al}_x$ high entropy alloys processed by high pressure torsion, *Intermetallics* 74 (2016) 38–45.
- [17] E.J. Pickering, R. Muñoz-Moreno, H.J. Stone, N.G. Jones, Precipitation in the equiatomic high-entropy alloy CrMnFeCoNi, *Scr. Mater.* 113 (2016) 106–109.
- [18] F. Otto, A. Dlouhý, K.G. Pradeep, M. Kuběnová, D. Raabe, G. Eggeler, E.P. George, Decomposition of the single-phase high-entropy alloy CrMnFeCoNi after prolonged anneals at intermediate temperatures, *Acta Mater.* 112 (2016) 40–52.
- [19] H. Shahmir, J. He, Z. Lu, M. Kawasaki, T.G. Langdon, Effect of annealing on mechanical properties of a nanocrystalline CoCrFeNiMn high-entropy alloy processed by high-pressure torsion, *Mater. Sci. Eng. A* 676 (2016) 294–303.
- [20] Q.H. Tang, Y. Huang, Y.Y. Huang, X.Z. Liao, T.G. Langdon, P.Q. Dai, Hardening of an Al_{0.3}CoCrFeNi high entropy alloy via high-pressure torsion and thermal annealing, *Mater. Lett.* 151 (2015) 126–129.
- [21] W.C. Oliver, G.M. Pharr, An improved technique for determining hardness and elastic modulus using load and displacement sensing indentation experiments, *J. Mater. Res.* 7 (1992) 1564–1583.
- [22] A. Gouldstone, N. Chollacoop, M. Dao, J. Li, A.M. Minor, Y.-L. Shen, Indentation across size scales and disciplines: recent developments in experimentation and modeling, *Acta Mater.* 55 (2007) 4015–4039.
- [23] S. Shim, J.-I. Jang, G.M. Pharr, Extraction of flow properties of single crystal silicon carbide by nanoindentation and finite element simulation, *Acta Mater.* 56 (2008) 3824–3832.
- [24] U. Ramamurty, J.-I. Jang, Nanoindentation for probing the mechanical behavior of molecular crystals—a review of the technique and how to use it, *Cryst. Eng. Comm.* 16 (2014) 12–23.
- [25] M.-Y. Seok, Y.-J. Kim, I.-C. Choi, Y. Zhao, J.-I. Jang, Predicting flow curves of two-phase steels from spherical nanoindentation data of constituent phases: isostrain method vs. non-isostrain method, *Int. J. Plast.* 59 (2014) 108–118.
- [26] M.-Y. Seok, J.-A. Lee, D.-H. Lee, U. Ramamurty, S. Nambu, T. Koseki, J.-I. Jang, Decoupling the contributions of constituent layers to the strength and ductility of a multi-layered steel, *Acta Mater.* 121 (2016) 164–172.
- [27] V. Maier-Kiener, B. Schuh, E.P. George, H. Clemens, A. Hohenwarter, Nano-indentation testing as a powerful screening tool for assessing phase stability of nanocrystalline high-entropy alloys, *Mater. Lett.* 115 (2017) 479–485.
- [28] J.-I. Jang, M.J. Lance, S. Wen, T.Y. Tsui, G.M. Pharr, Indentation-induced phase transformations in silicon: influences of load, rate, and indenter angle on the transformation behavior, *Acta Mater.* 53 (2005) 1759–1770.
- [29] I.-C. Choi, Y.-J. Kim, Y.M. Wang, U. Ramamurty, J.-I. Jang, Nanoindentation behavior of nanotwinned Cu: influences of indenter angle on hardness, strain rate sensitivity and activation volume, *Acta Mater.* 61 (2013) 7313–7323.
- [30] D.-H. Lee, J.-A. Lee, M.-Y. Seok, U.B. Baek, S.H. Nahm, J.-I. Jang, Stress-dependent hardening-to-softening transition of hydrogen effects in nano-indentation of a linepipe steel, *Int. J. Hydrogen Energy* 39 (2014) 1897–1902.
- [31] J.H. Strader, S. Shim, H. Bei, W.C. Oliver, G.M. Pharr, An experimental evaluation of the constant β relating the contact stiffness to the contact area in nanoindentation, *Philos. Mag.* 86 (2006) 5285–5298.
- [32] A. Hohenwarter, M. Faller, B. Rashkova, R. Pippan, Influence of heat treatment on the microstructural evolution of Al–3 wt.% Cu during high-pressure torsion, *Philos. Mag. Lett.* 94 (2014) 342–350.
- [33] B.B. Straumal, B. Baretzky, A.A. Mazilkin, F. Philipp, O.A. Kogtenkova, M.N. Volkov, R.Z. Valiev, Formation of nanograined structure and decomposition of supersaturated solid solution during high pressure torsion of Al–Zn and Al–Mg alloys, *Acta Mater.* 52 (2004) 4469–4478.
- [34] K.L. Johnson, *Contact Mechanics*, Cambridge University Press, Cambridge, 1985.
- [35] D. Tabor, *The Hardness of Metals*, Oxford University Press, Oxford, 1951.
- [36] Z. Wu, H. Bei, G.M. Pharr, E.P. George, Temperature dependence of the mechanical properties of equiatomic solid solution alloys with face-centered cubic crystal structures, *Acta Mater.* 81 (2014) 428–441.
- [37] C. Zhu, Z.P. Lu, T.G. Nieh, Incipient plasticity and dislocation nucleation of FeCoCrNiMn high-entropy alloy, *Acta Mater.* 61 (2013) 2993–3001.
- [38] Y. Wu, W.H. Liu, X.L. Wang, D. Ma, A.D. Stoica, T.G. Nieh, Z.B. He, Z.P. Lu, In-situ neutron diffraction study of deformation behavior of a multi-component high-entropy alloy, *Appl. Phys. Lett.* 104 (2014), 051910.
- [39] W.D. Nix, H. Gao, Indentation size effects in crystalline materials: a law for strain gradient plasticity, *J. Mech. Phys. Solids* 46 (1998) 411–425.
- [40] Y. Champion, C. Langlois, S. Guérin-Mailly, P. Langlois, J.L. Bonnetien, M.J. Hytch, Near-perfect elastoplasticity in pure nanocrystalline copper, *Science* 300 (2003) 310–311.
- [41] D. Jia, K.T. Ramesh, E. Ma, Effects of nanocrystalline and ultrafine grain sizes on constitutive behavior and shear bands in iron, *Acta Mater.* 51 (2003) 3495–3509.
- [42] C.Y. Yu, P.L. Sun, P.W. Kao, C.P. Chang, Mechanical properties of submicron-grained aluminum, *Scr. Mater.* 52 (2005) 359–363.
- [43] A. Khalajhedayati, T.J. Rupert, Emergence of localized plasticity and failure through shear banding during microcompression of a nanocrystalline alloy, *Acta Mater.* 65 (2014) 326–337.
- [44] S. Hariprasad, S.M.L. Sastry, K.L. Jerina, Deformation behavior of a rapidly solidified fine grained Al–8.5%Fe–1.2%V–1.7%Si alloy, *Acta Mater.* 44 (1996) 383–389.
- [45] F.H. Dalla Torre, R. Lapovok, J. Sandlin, P.F. Thomson, C.H.J. Davies, E.V. Pereloma, Microstructures and properties of copper processed by equal channel angular extrusion for 1–16 passes, *Acta Mater.* 52 (2004) 4819–4832.
- [46] M.H. Shih, C.Y. Yu, P.W. Kao, C.P. Chang, Microstructure and flow stress of copper deformed to large plastic strains, *Scr. Mater.* 45 (2001) 793–799.
- [47] J.-C. Lee, J.-Y. Suh, J.-P. Ahn, Work-softening behavior of the ultrafine-grained Al alloy processed by high-strain-rate, dissimilar-channel angular pressing, *Metall. Mater. Trans. A* 34 (2003) 625–632.
- [48] W. Wei, K.X. Wei, G.J. Fan, A new constitutive equation for strain hardening and softening of fcc metals during severe plastic deformation, *Acta Mater.* 56 (2008) 4771–4779.
- [49] F. Tang, J.M. Schoenung, Strain softening in nanocrystalline or ultrafine-grained metals: a mechanistic explanation, *Mater. Sci. Eng. A* 493 (2008) 101–103.
- [50] H. Bei, E.P. George, J.L. Hay, G.M. Pharr, Influence of indenter tip geometry on elastic deformation during nanoindentation, *Phys. Rev. Lett.* 95 (2005)

- 045501.
- [51] J. Languillaume, G. Kapelski, B. Baudelet, Cementite dissolution in heavily cold drawn pearlitic steel wires, *Acta Mater.* 45 (1997) 1201–1212.
- [52] A.Y. Badmos, H.K.D.H. Bhadeshia, The evolution of solutions: a thermodynamic analysis of mechanical alloying, *Metall. Mater. Trans. A* 28A (1997) 2189–2194.
- [53] C. Suryanarayana, Mechanical alloying and milling, *Prog. Mater. Sci.* 46 (2001) 1–184.
- [54] Y. Ivanisenko, W. Lojkowski, R.Z. Valiev, H.-J. Fecht, The mechanism of formation of nanostructure and dissolution of cementite in a pearlitic steel during high pressure torsion, *Acta Mater.* 51 (2003) 5555–5570.
- [55] Z. Horita, K. Ohashi, T. Fujita, K. Kaneko, T.G. Langdon, Achieving high strength and high ductility in precipitation-hardened alloys, *Adv. Mater.* 17 (2005) 1599–1602.
- [56] Z. Liu, S. Bai, X. Zhou, Y. Gu, On strain-induced dissolution of θ' and θ particles in Al–Cu binary alloy during equal channel angular pressing, *Mater. Sci. Eng. A* 528 (2011) 2217–2222.
- [57] M. Song, K. Du, Z.Y. Huang, H. Huang, Z.R. Nie, H.Q. Ye, Deformation-induced dissolution and growth of precipitates in an Al–Mg–Er alloy during high-cycle fatigue, *Acta Mater.* 81 (2014) 409–419.
- [58] J.D. Embury, A. Deschamps, Y. Brechet, The interaction of plasticity and diffusion controlled precipitation reactions, *Scr. Mater.* 49 (2003) 927–932.
- [59] D.M.J. King, S.C. Middleburgh, A.G. McGregor, M.B. Cortie, Predicting the formation and stability of single phase high-entropy alloys, *Acta Mater.* 104 (2016) 172–179.
- [60] A.R. Miedema, The electronegativity parameter for transition metals: heat of formation and charge transfer in alloys, *J. Less-Common Met.* 41 (1973) 117–136.
- [61] I. Ohnuma, H. Enoki, O. Ikeda, R. Kainuma, H. Ohtani, B. Sundman, K. Ishida, Phase equilibria in the Fe–Co binary system, *Acta Mater.* 50 (2002) 379–393.
- [62] J.W. Martin, R.D. Doherty, B. Cantor, *Stability of Microstructure in Metallic Systems*, Cambridge University Press, 1997.
- [63] J. Weissmüller, J.W. Cahn, Mean stresses in microstructures due to interface stresses: a generalization of a capillary equation for solids, *Acta Mater.* 45 (1997) 1899–1906.
- [64] A. Ramazani, K. Mukherjee, A. Schwedt, P. Goravanchi, U. Prael, W. Bleck, Quantification of the effect of transformation-induced geometrically necessary dislocations on the flow-curve modelling of dual-phase steels, *Int. J. Plast.* 43 (2013) 128–152.
- [65] R.I. Barabash, O.M. Barabash, M. Ojima, Z. Yu, J. Inoue, S. Nambu, T. Koseki, R. Xu, Z. Feng, Interphase strain gradients in multilayered steel composite from microdiffraction, *Metall. Mater. Trans. A* 45A (2014) 98–108.
- [66] G. Langford, Deformation of pearlite, *Metall. Trans. A* 8A (1977) 861–875.
- [67] K.M. Youssef, R.O. Scattergood, K.L. Murty, J.A. Horton, C.C. Koch, Ultrahigh strength and high ductility of bulk nanocrystalline copper, *Appl. Phys. Lett.* 87 (2005) 091904.
- [68] Y.L. Chiu, A.H.W. Ngan, Time-dependent characteristics of incipient plasticity in nanoindentation of a Ni₃Al single crystal, *Acta Mater.* 50 (2002) 1599–1611.
- [69] P.C. Wo, A.H.W. Ngan, Incipient plasticity during nano-scratch in Ni₃Al, *Philos. Mag.* 84 (2004) 3145–3157.