

Lack of association between airflow limitation and recurrence of venous thromboembolism among cancer patients with pulmonary embolism

Sun Hye Shin,¹ Danbee Kang,²
Juhee Cho,² Haseong Chang,³
Min Sun Kim,³ Su Yeon Lee,³ Hyun
Lee,¹ Hojoong Kim,¹ Duk-Kyung
Kim,³ Eun Kyoung Kim,^{3,*} Hye
Yun Park^{1,*}

¹Division of Pulmonary and Critical Care
Medicine, Department of Medicine, Samsung
Medical Center, Sungkyunkwan University
School of Medicine, Seoul, South Korea;

²Department of Clinical Research Design and
Evaluation, SAHST, Sungkyunkwan University,
Seoul, South Korea; ³Division of Cardiology,
Department of Medicine, Heart Vascular
Stroke Institute, Samsung Medical Center,
Sungkyunkwan University School of Medicine,
Seoul, South Korea

*These authors contributed equally to this
work

Background: COPD is a well-known risk factor for venous thromboembolism (VTE) development. However, recent data showed that it was not associated with VTE recurrence risk, which excluded cancer patients. This study investigated the association of airflow limitation and VTE recurrence in cancer patients with pulmonary embolism (PE).

Methods: This is a retrospective cohort study of cancer patients with newly diagnosed PE at a university hospital. PE was confirmed using contrast-enhanced computed tomography scan. Airflow limitation was defined as pre-bronchodilator forced expiratory volume in 1 second (FEV₁)/forced vital capacity (FVC) <0.7 within 2 years of PE diagnosis. VTE recurrence was defined as a composite of recurrence as PE or deep vein thrombosis or both.

Results: Among 401 cancer patients with newly diagnosed PE, spirometry-based airflow limitation was observed in 126 (31.4%) patients. Half of the patients had lung cancer, which was more common in the group with airflow limitation (65.1% vs 42.9%, $p < 0.001$). Symptomatic PE was present in less than half (45.4%) of the cases, and 62.6% of patients were treated for PE. During the median follow-up period of 9.7 months, VTE recurred in 49 (12.2%) patients. Compared with patients without airflow limitation, those with airflow limitation did not have an increased risk of VTE recurrence in univariate or multivariate analyses (adjusted hazard ratio, 1.29 [95% CI 0.68, 2.45]).

Conclusion: The presence of airflow limitation did not increase the risk of VTE recurrence in cancer patients with PE. Prospective studies are needed to validate this finding.

Keywords: chronic obstructive pulmonary disease, cancer, pulmonary embolism, recurrence, venous thromboembolism

Introduction

VTE is a common cardiovascular disease with an annual incidence from 104 to 183 per 100,000 person-years.¹ It comprises DVT or PE or both. Acute PE is the most serious manifestation of VTE and results in high short-term mortality, chronic complications, and frequent recurrence.²⁻⁴ The cumulative incidence of VTE recurrence has been reported to reach 13% at 1 year, 23% at 5 years, and 30% at 10 years, and recurrent events can be fatal.^{4,5}

COPD is a moderate risk factor for initial VTE and its prognosis.^{6,7} Several studies have shown that COPD patients have up to five times increased risk of PE or VTE compared with patients without COPD, and there is a significant association between VTE events and COPD severity.⁸⁻¹² In addition, COPD patients with VTE have much higher mortality compared with COPD patients without VTE.¹³ Likewise, several studies based on PE and VTE registries suggested that COPD

Correspondence: Hye Yun Park
Division of Pulmonary and Critical Care Medicine,
Department of Medicine, Samsung Medical Center,
Sungkyunkwan University School of Medicine,
81 Irwon-ro, Gangnam-gu, Seoul 06351, South
Korea
Tel +82 2 3410 3429
Fax +82 2 3410 3849
Email hyeyunpark@skku.edu

Eun Kyoung Kim
Division of Cardiology, Department of Medicine,
Heart Vascular Stroke Institute, Samsung Medical
Center, Sungkyunkwan University School of
Medicine, 81 Irwon-ro, Gangnam-gu, Seoul 06351,
South Korea
Tel +82 2 3410 3419
Fax +82 2 3410 3849
Email ekbobi.kim@samsung.com

is an unfavorable prognostic factor for bleeding and mortality.^{2,7,14} However, VTE recurrence rates were similar between COPD patients and non-COPD patients during the 3-month follow-up period.¹⁴ Recent data from a prospective cohort study indicated that COPD did not increase the long-term risk of recurrent VTE.¹⁵ Although this study considered major provoking factors such as immobilization after surgery, use of estrogen-containing pills, or hormone replacement therapy, active cancer patients were not included.¹⁵ Cancer is a strong provoking factor of VTE development and outcomes,^{4,16–18} and the prevalence of cancer in COPD patients with PE was as high as 20% in a previous study.¹⁴ We therefore investigated the association of spirometry-based airflow limitation with VTE recurrence among cancer patients with PE.

Methods

Study population

This is a retrospective cohort study conducted at Samsung Medical Center, Seoul, South Korea, between June 1, 2010, and December 31, 2013. Among patients who were diagnosed with PE during the study period, those who were undergoing treatment or follow-up for pathologically confirmed cancer were identified. Patients with stump thrombosis, tumor emboli, and a history of PE were excluded.

Measurements and data collection

PE diagnosis was confirmed by contrast-enhanced chest CT, and two authors (SHS and HC) reviewed the CT images for evaluation of initial diagnosis, burden, and recurrence. Data regarding basic demographics, cancer diagnosis and treatment, symptoms and signs of PE, treatment for PE, date of VTE recurrence, last follow-up, or death were collected from electronic medical records. Regarding airflow limitation, spirometry performed within 2 years of PE diagnosis was considered. Spirometry was performed as recommended by the American Thoracic Society/European Respiratory Society using Vmax 22 (SensorMedics, Yorba Linda, CA, USA).¹⁹ Airflow limitation was defined as pre-bronchodilator $FEV_1/FVC < 70\%$.

The primary outcome was recurrence of VTE, defined as a composite of recurrence of PE or DVT or both. Diagnosis of recurrent PE was based on the CT scan, and the diagnosis of recurrent DVT was based on the duplex ultrasonography or CT venography. The institutional review board of Samsung Medical Center approved this study. Informed consent was waived due to the retrospective nature, and patient information was anonymized and de-identified prior to analysis.

Statistical analysis

Categorical variables were compared using the Chi-square test or Fisher's exact test, and continuous variables were compared using Student's *t*-test or Mann–Whitney *U* test. Cox proportional hazard models were used to evaluate the impact of airflow limitation on VTE recurrence. For multivariate analyses, we used three models. The first model was adjusted for age, sex, BMI, and smoking status. The second model was further adjusted for metastatic disease and recent surgery. The third model was further adjusted for PE treatment. All tests were two sided, and *p*-value < 0.05 was considered statistically significant. All analyses were performed using Stata (version 13.0; Stata Corporation, College Station, TX, USA).

Results

Patient characteristics

Among cancer patients with newly diagnosed PE during the study period, we identified 401 patients who underwent spirometry within 2 years (Figure 1); median time between spirometry and PE diagnosis was 92 days (IQR 47–231). Of the 401 patients, 126 (31.4%) had airflow limitation. Patients with airflow limitation were older (66.3 years vs 62.0 years, $p < 0.001$), more likely to be male (82.5% vs 52.4%, $p < 0.001$), and more likely to be a current smoker (66.7% vs 33.1%, $p < 0.001$) as compared with those without airflow limitation. History of DVT and comorbidities were not different between the groups. Among cancer patients, about half (49.9%) had lung cancer, which was significantly more common in patients with airflow limitation (65.1% vs 42.9%, $p < 0.001$). Although there were slightly more patients with metastatic disease in the group without airflow limitation, there were no differences between the two groups regarding recent surgery, ongoing chemotherapy, or radiotherapy (Table 1).

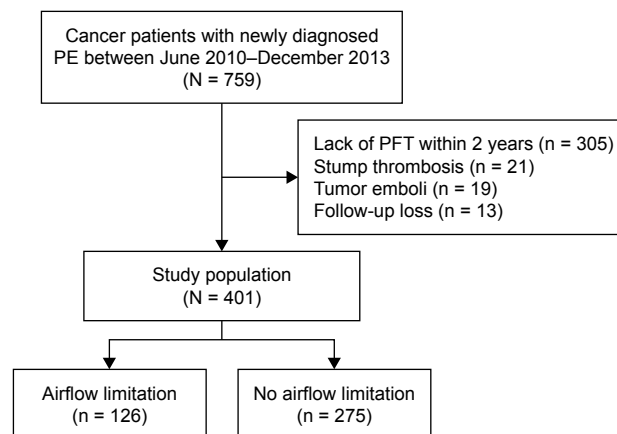


Figure 1 A consort diagram of the study population.

Abbreviations: PE, pulmonary embolism; PFT, pulmonary function test.

Table 1 Distribution of baseline characteristics in 401 cancer patients with PE according to airflow limitation

Characteristics	No airflow limitation (n = 275)	Airflow limitation (n = 126)	p-value
Age (years)	62.0 (11.7)	66.3 (9.4)	<0.001
Sex, male	144 (52.4)	104 (82.5)	<0.001
Body mass index (kg/m ²)	23.5 (3.6)	23.4 (3.1)	0.712
Smoking			<0.001
Never	170 (61.8)	32 (25.4)	
Former	14 (5.1)	10 (7.9)	
Current	91 (33.1)	84 (66.7)	
Comorbidity			
Hypertension	102 (37.1)	46 (36.5)	0.911
Diabetes	53 (19.3)	16 (12.7)	0.105
Chronic kidney disease	15 (5.5)	9 (7.1)	0.508
Previous DVT	7 (2.6)	4 (3.2)	0.720
Cancer type			
Lung	118 (42.9)	82 (65.1)	<0.001
Colon	38 (13.8)	10 (7.9)	0.092
Stomach	20 (7.3)	3 (2.4)	0.051
Gynecologic	19 (6.9)	1 (0.8)	0.009
Esophagus	8 (2.9)	7 (5.6)	0.195
Others	72 (26.2)	23 (18.3)	0.083
Metastatic disease	182 (66.2)	69 (54.8)	0.054
Surgery within 2 months [#]	53 (19.3)	26 (20.6)	0.750
Ongoing chemotherapy [†]	159 (57.8)	67 (53.2)	0.507
Ongoing/recent radiotherapy [‡]	25 (9.1)	10 (7.9)	0.663
Pulmonary function			
FEV ₁ /FVC (%)	78.2 (5.5)	61.7 (7.6)	<0.001
FEV ₁ (% predicted)	84.8 (18.3)	68.1 (15.5)	<0.001

Notes: Values are the mean (SD) or number (%). [#]More than 30 minutes of surgery time under general anesthesia. [†]PE developed during the chemotherapy or within one cycle of time after the last chemotherapy. [‡]PE developed during the radiotherapy or within 13 weeks after the radiotherapy.

Abbreviations: DVT, deep vein thrombosis; FEV₁, forced expiratory volume in 1 second; FVC, forced vital capacity; PE, pulmonary embolism.

Clinical presentation, CT findings, and treatment of PE

At the time of PE diagnosis, only 45.4% (182/401) of patients were symptomatic. Patients with airflow limitation were more likely to report dyspnea (37.3% vs 26.6%, $p = 0.029$) as compared with those without airflow limitation. Signs at PE diagnosis, such as tachycardia, hypoxia, and shock, and the burden of PE on chest CT were not found to be significantly different according to airflow limitation (Table 2). Of the 251 (62.6%) patients who were treated for PE, only few were treated with embolectomy or thrombolysis along with anticoagulation treatment. Type and duration of anticoagulation did not differ significantly between the two groups (Table 3).

VTE recurrence according to airflow limitation

During the median follow-up period of 9.7 months (IQR 2.8–26.6), 49 (12.2%) patients experienced VTE recurrence

Table 2 Clinical presentation and CT findings of PE in 401 cancer patients according to airflow limitation

Clinical features	No airflow limitation (n = 275)	Airflow limitation (n = 126)	p-value
Symptoms at PE diagnosis	121 (44.0)	61 (48.4)	0.225
Dyspnea	73 (26.6)	47 (37.3)	0.029
Leg swelling/pain	27 (9.8)	9 (7.1)	0.384
Chest pain	14 (5.1)	3 (2.4)	0.211
Signs at PE diagnosis	94 (34.2)	52 (41.3)	0.171
Tachycardia	75 (27.3)	49 (38.9)	0.065
Hypoxia	53 (19.3)	29 (23.0)	0.668
Shock	11 (4.0)	6 (4.8)	0.892
CT finding			
Bilateral PE	119 (43.3)	54 (42.9)	0.938
Location			0.276
Central	53 (19.3)	33 (26.2)	
Lobar	105 (38.2)	46 (36.5)	
Distal segmental/subsegmental	117 (42.6)	47 (37.3)	

Note: Values are the number (%).

Abbreviations: CT, computed tomography; PE, pulmonary embolism.

(14% of patients with airflow limitation and 11% of those without airflow limitation). Among the patients with recurrent VTE, all (18/18) those with airflow limitation had PE (with or without DVT), whereas 19.4% (6/31) without airflow limitation had isolated DVT ($p = 0.073$).

In the univariate analysis, airflow limitation was not associated with the risk of VTE recurrence (HR 1.31 [95% CI 0.73, 2.34]) (Table 4 and Figure 2). The impact of airflow limitation on the risk of VTE recurrence remained insignificant after adjustment for patient-related characteristics (aHR 1.20 [95% CI 0.64, 2.26]), for cancer-related characteristics

Table 3 Treatment for PE in 401 cancer patients according to airflow limitation

Treatment features	No airflow limitation (n = 275)	Airflow limitation (n = 126)	p-value
Observation without treatment	103 (37.5)	47 (37.3)	0.977
Treatment [#]			
Embolectomy	3 (1.1)	0	0.555
Thrombolysis	1 (0.4)	2 (1.6)	0.234
Anticoagulation	171 (62.2)	79 (62.7)	0.921
Type of anticoagulation [†]			0.096
Warfarin	105 (61.4)	59 (74.7)	
LMWH	60 (35.1)	17 (21.5)	
NOAC	6 (3.5)	3 (3.8)	
Anticoagulation duration (months) [‡]	4.0 (1.8–6.5)	4.2 (1.3–7.0)	0.638

Notes: Values are the number (%) or median (interquartile range). [#]Data were overlapped. [†]Analysis was done in 250 patients who received anticoagulation treatment.

Abbreviations: LMWH, low-molecular-weight heparin; NOAC, non-vitamin K-dependent new oral anticoagulant; PE, pulmonary embolism.

Table 4 Impact of airflow limitation on VTE recurrence among PE patients with cancer

VTE recurrence	No airflow limitation (n = 275)	Airflow limitation (n = 126)
No of cases (%)	31 (11.3)	18 (14.3)
Incidence rate (cases/1,000 person-years)	6.8	9.5
Unadjusted HR (95% CI)	Reference	1.31 (0.73, 2.34)
Model 1	Reference	1.20 (0.64, 2.26)
Model 2	Reference	1.26 (0.66, 2.41)
Model 3	Reference	1.29 (0.68, 2.45)

Notes: Model 1 adjusted for age, sex, body mass index, and smoking (never/ever). Model 2 further adjusted for metastatic disease and recent surgery. Model 3 further adjusted for PE treatment.

Abbreviations: CI, confidence interval; HR, hazard ratio; PE, pulmonary embolism; VTE, venous thromboembolism.

(aHR 1.26 [95% CI 0.66, 2.41]), and for PE treatment (aHR 1.29 [95% CI 0.68, 2.45]). The hazard remained unchanged in subgroup analysis with lung cancer patients (Table S1). Furthermore, recurrent VTE was not different according to the severity of airflow limitation (17.2%, 14.5%, and 7.1% in $FEV_1 \geq 80\%$ predicted, $50\% \leq FEV_1 < 80\%$ predicted, and $FEV_1 < 50\%$ predicted, respectively) ($p = 0.737$).

Discussion

In our study of 401 cancer patients with PE, about one-third of the patients had spirometry-based airflow limitation. During the median follow-up of 9.7 months, VTE recurred in 12.2% of patients. However, coexisting airflow limitation did not increase the risk of VTE recurrence in patients with cancer.

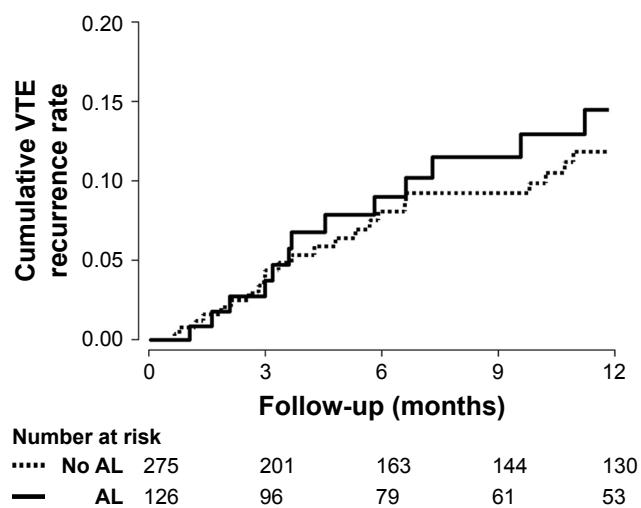


Figure 2 Cumulative VTE recurrence in cancer patients with PE according to airflow limitation.

Abbreviations: AL, airflow limitation; PE, pulmonary embolism; VTE, venous thromboembolism.

There have been few studies investigating VTE recurrence in COPD patients. One study was a post hoc analysis of a prospective management study in 673 hemodynamically stable PE patients. The study found that COPD was associated with increased bleeding and mortality, but not recurrent VTE over 3 months.²⁰ Another study was performed using the RIETE registry with 28,920 symptomatic VTE patients.¹⁴ In that study, COPD patients experienced higher PE recurrence, minor bleeding, and higher rates of death by 3 months. However, recurrence of overall VTE was not different between patients with and without COPD. In both the studies, the results of the lung function tests were not available for all COPD patients, and patients could have been misclassified as COPD or non-COPD. A recent prospective cohort study of a large number of patients with long-term follow-up showed that patients with objectively measured COPD did not have an increased risk of VTE recurrence.¹⁵ However, this study did not include active cancer patients, probably to minimize confounding factors.

Our study was restricted to cancer patients to explore the association between COPD and VTE recurrence, and we also confirmed that airflow limitation was not associated with the risk of VTE recurrence in cancer patients. Several factors should be considered in interpreting this finding. First, cancer patients undergo chest CT scan more frequently, which leads to more frequent findings of incidental PE.²¹ Indeed, in our study, only 45.4% of cancer patients had symptomatic PE, indicating a high proportion of incidental PE among cancer patients. This might mask the effect of airflow limitation on VTE recurrence. Second, subtherapeutic anticoagulation treatment for PE is associated with the increment of VTE recurrence.²² Approximately 38% of cancer patients did not receive anticoagulation in our study, which was at the discretion of the treating physicians. Among them, 85% had incidentally detected PE and 57% had PE in segmental or subsegmental pulmonary arteries. Although current guidelines recommend treating all cancer patients with PE,^{23,24} there is still debate over the use of anticoagulation in cancer patients with incidental PE.²⁵ In addition, treatment risk (ie, bleeding) over benefits could be considered, especially in patients with asymptomatic PE in segmental or subsegmental pulmonary arteries or those with short expected survival. Nevertheless, we performed subgroup analysis in patients with anticoagulation, which revealed the same result.

There are some limitations in our study. First, because this is a retrospective cohort study in a single referral hospital with a large volume of lung cancer patients, the result of our study

may not be generalized to patients in other settings. Second, compared with a recent study of noncancer patients,¹⁵ the follow-up duration was relatively short. This is largely attributable to high number of cancer-related deaths, which also contributed to the limited duration of anticoagulation in our study with a median duration of 4 months. However, analysis in which death was included as a competing risk of recurrence did not show a difference. Last, inclusion of patients with valid spirometry test results would have introduced selection bias. It is possible that PE patients in our study were more likely to have preexisting respiratory symptoms than PE patients who were not included in this study. Further prospective study with a larger and more heterogeneous cancer population is necessary to assess the generalizability of our results. Despite these limitations, our study used validated and standardized measurements to define airflow limitation and the diagnosis of PE and included cancer-related factors as well as treatment in the analyses.

Conclusion

Airflow limitation did not increase the risk of VTE recurrence in cancer patients with PE. Taken together with the result from patients without cancer,¹⁵ there seems to be no evidence at present to support different management of PE in patients with COPD. Prospective studies are necessary to confirm whether the coexistence of airflow limitation deserves attention in the management of cancer patients with PE.

Abbreviations

aHR, adjusted hazard ratio; CI, confidence interval; CT, computed tomography; DVT, deep vein thrombosis; FEV₁, forced expiratory volume in 1 second; FVC, forced vital capacity; HR, hazard ratio; IQR, interquartile range; PE, pulmonary embolism; RIETE, Registro Informatizado de la Enfermedad Tromboembolica venosa; VTE, venous thromboembolism.

Disclosure

The authors report no conflicts of interest in this work.

References

- Heit JA. Epidemiology of venous thromboembolism. *Nat Rev Cardiol.* 2015;12(8):464–474.
- Goldhaber SZ, Visani L, De Rosa M. Acute pulmonary embolism: clinical outcomes in the International Cooperative Pulmonary Embolism Registry (ICOPER). *Lancet.* 1999;353(9162):1386–1389.
- Beccattini C, Agnelli G, Pesavento R, et al. Incidence of chronic thromboembolic pulmonary hypertension after a first episode of pulmonary embolism. *Chest.* 2006;130(1):172–175.

- Heit JA, Mohr DN, Silverstein MD, Petterson TM, O'Fallon WM, Melton LJ 3rd. Predictors of recurrence after deep vein thrombosis and pulmonary embolism: a population-based cohort study. *Arch Intern Med.* 2000;160(6):761–768.
- Carrier M, Le Gal G, Wells PS, Rodger MA. Systematic review: case-fatality rates of recurrent venous thromboembolism and major bleeding events among patients treated for venous thromboembolism. *Ann Intern Med.* 2010;152(9):578–589.
- Konstantinides SV, Torbicki A, Agnelli G, et al; Task Force for the Diagnosis and Management of Acute Pulmonary Embolism of the European Society of Cardiology (ESC). 2014 ESC guidelines on the diagnosis and management of acute pulmonary embolism. *Eur Heart J.* 2014;35(43):3033–3069, 3069a–3069k.
- Jiménez D, Aujesky D, Moores L, et al; RIETE Investigators. Simplification of the pulmonary embolism severity index for prognostication in patients with acute symptomatic pulmonary embolism. *Arch Intern Med.* 2010;170(15):1383–1389.
- Sidney S, Sorel M, Quesenberry CP Jr, DeLuise C, Lanes S, Eisner MD. COPD and incident cardiovascular disease hospitalizations and mortality: Kaiser Permanente Medical Care Program. *Chest.* 2005;128(4):2068–2075.
- Curkendall SM, DeLuise C, Jones JK, et al. Cardiovascular disease in patients with chronic obstructive pulmonary disease, Saskatchewan Canada cardiovascular disease in COPD patients. *Ann Epidemiol.* 2006;16(1):63–70.
- Schneider C, Bothner U, Jick SS, Meier CR. Chronic obstructive pulmonary disease and the risk of cardiovascular diseases. *Eur J Epidemiol.* 2010;25(4):253–260.
- Chen WJ, Lin CC, Lin CY, et al. Pulmonary embolism in chronic obstructive pulmonary disease: a population-based cohort study. *COPD.* 2014;11(4):438–443.
- Morgan AD, Herrett E, De Stavola BL, Smeeth L, Quint JK. COPD disease severity and the risk of venous thromboembolic events: a matched case-control study. *Int J Chron Obstruct Pulmon Dis.* 2016;11:899–908.
- Borvik T, Brækkan SK, Enga K, et al. COPD and risk of venous thromboembolism and mortality in a general population. *Eur Respir J.* 2016;47(2):473–481.
- Bertoletti L, Quenet S, Mismetti P, et al; RIETE Investigators. Clinical presentation and outcome of venous thromboembolism in COPD. *Eur Respir J.* 2012;39(4):862–868.
- Le Mao R, Tromeur C, Bazire A, et al. Risk of recurrent venous thromboembolism in COPD patients: results from a prospective cohort study. *Eur Respir J.* 2017;50(1).
- Hutten BA, Prins MH, Gent M, Ginsberg J, Tijssen JG, Büller HR. Incidence of recurrent thromboembolic and bleeding complications among patients with venous thromboembolism in relation to both malignancy and achieved international normalized ratio: a retrospective analysis. *J Clin Oncol.* 2000;18(17):3078–3083.
- Prandoni P, Lensing AW, Piccioli A, et al. Recurrent venous thromboembolism and bleeding complications during anticoagulant treatment in patients with cancer and venous thrombosis. *Blood.* 2002;100(10):3484–3488.
- Gussoni G, Frasson S, La Regina M, Di Micco P, Monreal M; RIETE Investigators. Three-month mortality rate and clinical predictors in patients with venous thromboembolism and cancer. Findings from the RIETE registry. *Thromb Res.* 2013;131(1):24–30.
- Miller MR, Hankinson J, Brusasco V, et al; ATS/ERS Task Force. Standardisation of spirometry. *Eur Respir J.* 2005;26(2):319–338.
- Nijkeuter M, Söhne M, Tick LW, et al; Christopher Study Investigators. The natural course of hemodynamically stable pulmonary embolism: clinical outcome and risk factors in a large prospective cohort study. *Chest.* 2007;131(2):517–523.
- Dentali F, Ageno W, Beccattini C, et al. Prevalence and clinical history of incidental, asymptomatic pulmonary embolism: a meta-analysis. *Thromb Res.* 2010;125(6):518–522.

22. Heit JA, Lahr BD, Petterson TM, Bailey KR, Ashrani AA, Melton LJ 3rd. Heparin and warfarin anticoagulation intensity as predictors of recurrence after deep vein thrombosis or pulmonary embolism: a population-based cohort study. *Blood*. 2011;118(18):4992–4999.
23. Lyman GH, Khorana AA, Kuderer NM, et al; American Society of Clinical Oncology Clinical Practice. Venous thromboembolism prophylaxis and treatment in patients with cancer: American Society of Clinical Oncology clinical practice guideline update. *J Clin Oncol*. 2013;31(17):2189–2204.
24. Kearon C, Akl EA, Comerota AJ, et al. Antithrombotic therapy for VTE disease: Antithrombotic Therapy and Prevention of Thrombosis, 9th ed: American College of Chest Physicians Evidence-Based Clinical Practice Guidelines. *Chest*. 2012;141(2 Suppl):e419S–e496S.
25. Peris M, Jiménez D, Maestre A, et al; RIETE Investigators. Outcome during and after anticoagulant therapy in cancer patients with incidentally found pulmonary embolism. *Eur Respir J*. 2016;48(5):1360–1368.

Supplementary material

Table S1 Impact of airflow limitation on VTE recurrence among PE patients with lung cancer

VTE recurrence	No airflow limitation (n = 118)	Airflow limitation (n = 82)
No of cases (%)	13 (11.0)	13 (15.9)
Incidence rate (cases/1,000 person-years)	6.2	11.7
Unadjusted HR (95% CI)	Reference	1.70 (0.78, 3.69)
Model 1	Reference	1.78 (0.74, 4.30)
Model 2	Reference	1.74 (0.70, 4.33)
Model 3	Reference	1.72 (0.70, 4.22)

Notes: Model 1 adjusted for age, sex, body mass index, and smoking (never/ever). Model 2 further adjusted for metastatic disease and recent surgery. Model 3 further adjusted for PE treatment.

Abbreviations: CI, confidence interval; HR, hazard ratio; PE, pulmonary embolism; VTE, venous thromboembolism.

International Journal of COPD

Publish your work in this journal

The International Journal of COPD is an international, peer-reviewed journal of therapeutics and pharmacology focusing on concise rapid reporting of clinical studies and reviews in COPD. Special focus is given to the pathophysiological processes underlying the disease, intervention programs, patient focused education, and self management protocols.

Submit your manuscript here: <http://www.dovepress.com/international-journal-of-chronic-obstructive-pulmonary-disease-journal>

Dovepress

This journal is indexed on PubMed Central, MedLine and CAS. The manuscript management system is completely online and includes a very quick and fair peer-review system, which is all easy to use. Visit <http://www.dovepress.com/testimonials.php> to read real quotes from published authors.